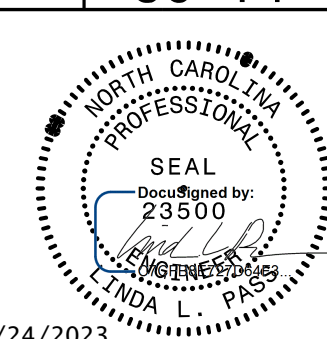
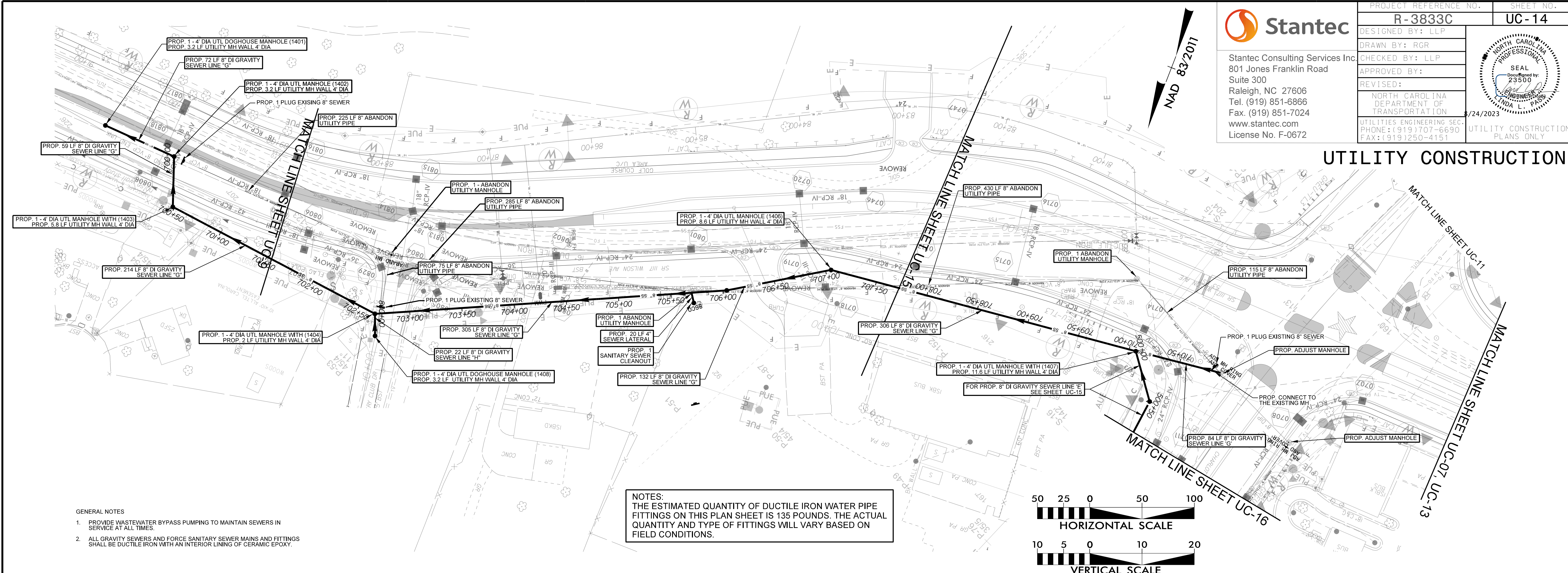


**Stantec**  
 Stantec Consulting Services Inc.  
 801 Jones Franklin Road  
 Suite 300  
 Raleigh, NC 27606  
 Tel. (919) 851-6866  
 Fax. (919) 851-7024  
 www.stantec.com  
 License No. F-0672

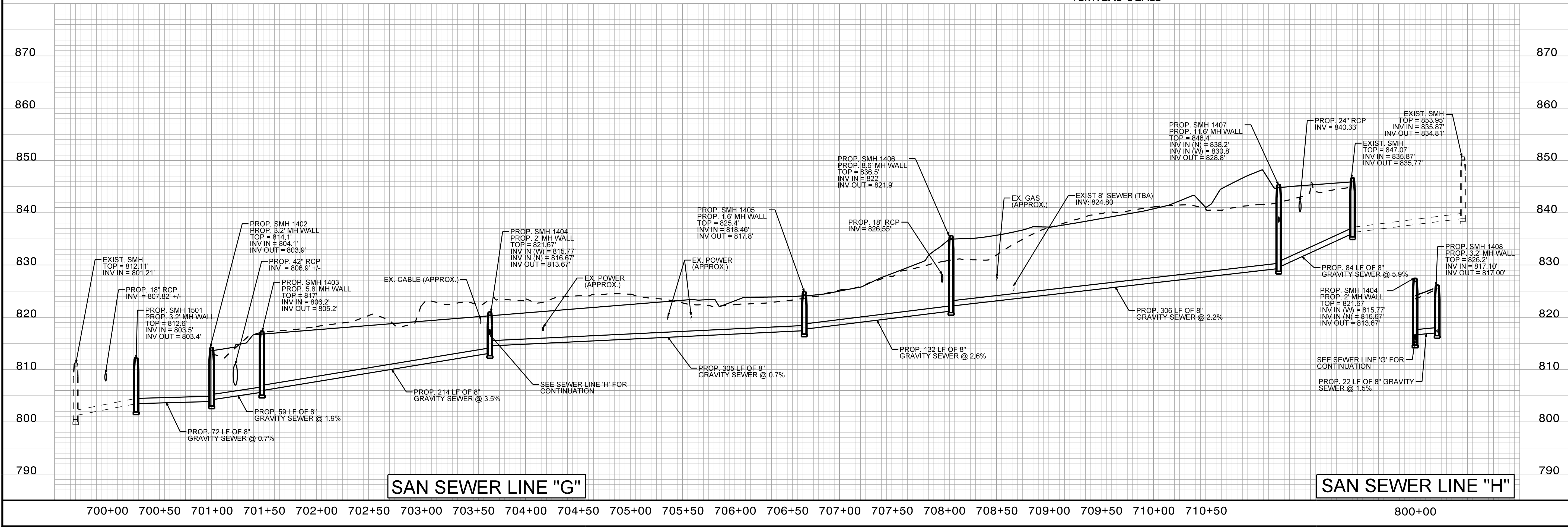
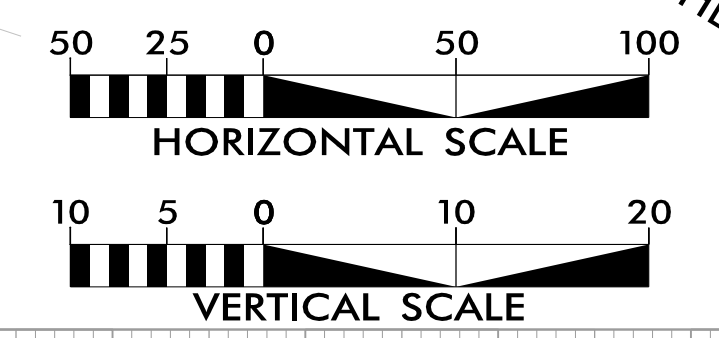
PROJECT REFERENCE NO.	R-3833C	SHEET NO.	UC-14
DESIGNED BY:	LLP		
DRAWN BY:	RGR		
CHECKED BY:	LLP		
APPROVED BY:			
REVISED:			
NORTH CAROLINA DEPARTMENT OF TRANSPORTATION		UTILITIES ENGINEERING SECTION	
PHONE: (919) 707-6690		FAX: (919) 250-4151	

# UTILITY CONSTRUCTION



- GENERAL NOTES**
1. PROVIDE WASTEWATER BYPASS PUMPING TO MAINTAIN SEWERS IN SERVICE AT ALL TIMES.
  2. ALL GRAVITY SEWERS AND FORCE SANITARY SEWER MAINS AND FITTINGS SHALL BE DUCTILE IRON WITH AN INTERIOR LINING OF CERAMIC EPOXY.

**NOTES:**  
 THE ESTIMATED QUANTITY OF DUCTILE IRON WATER PIPE FITTINGS ON THIS PLAN SHEET IS 135 POUNDS. THE ACTUAL QUANTITY AND TYPE OF FITTINGS WILL VARY BASED ON FIELD CONDITIONS.



**SAN SEWER LINE "G"**

**SAN SEWER LINE "H"**