

# PROJECT TYPICAL DETAILS



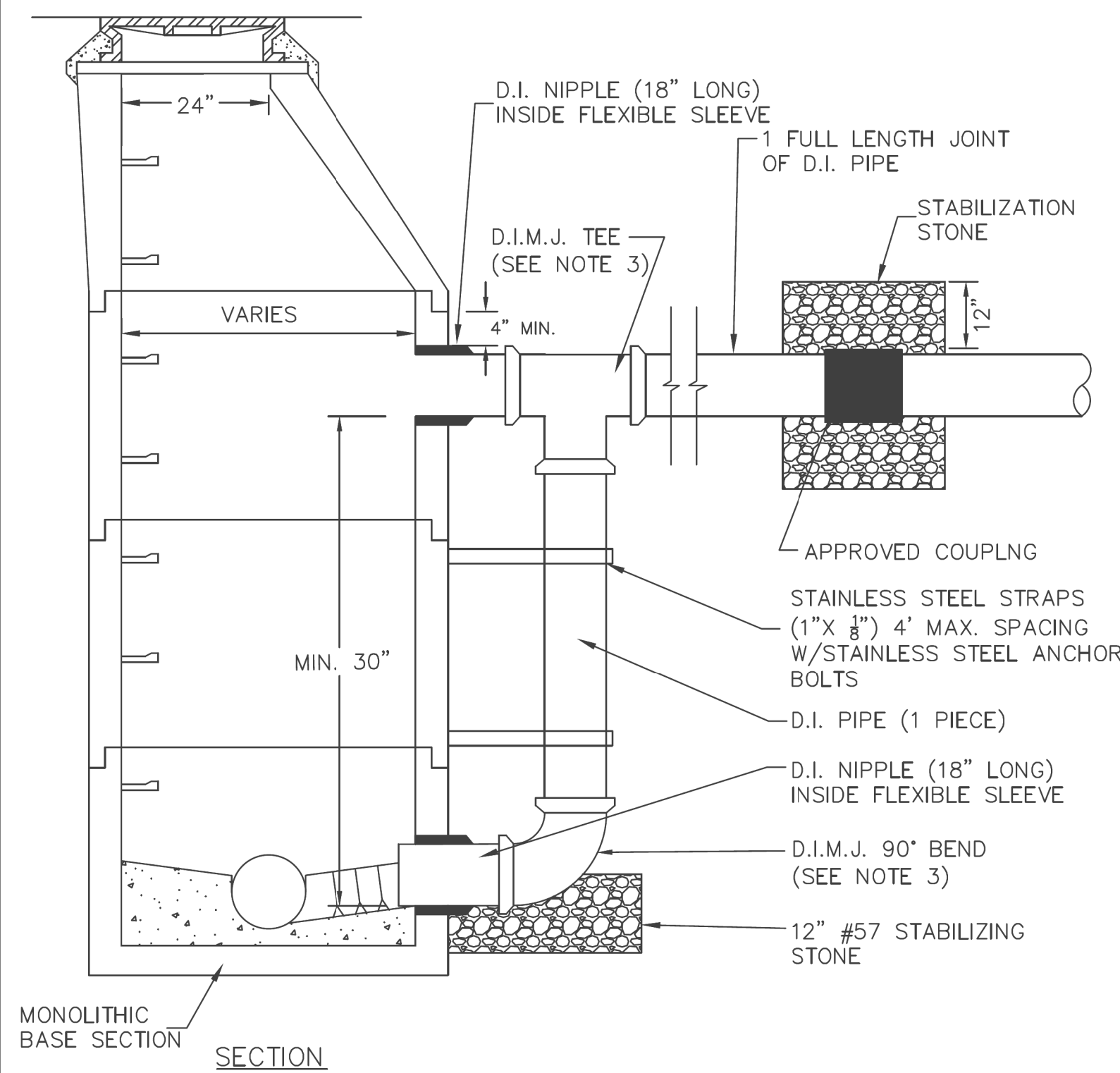
Stantec Consulting Services Inc.  
 801 Jones Franklin Road  
 Suite 300  
 Raleigh, NC 27606  
 Tel. (919) 851-6866  
 Fax. (919) 851-7024  
 www.stantec.com  
 License No. F-0672

PROJECT REFERENCE NO. <b>R-3833C</b>	SHEET NO. <b>UC-03G</b>
DESIGNED BY: MCM	
DRAWN BY: RGR	
CHECKED BY: MCM	
APPROVED BY:	
REVISED:	
NORTH CAROLINA DEPARTMENT OF TRANSPORTATION	8/24/2023
UTILITIES ENGINEERING SEC. PHONE: (919) 707-6690 FAX: (919) 250-4151	UTILITY CONSTRUCTION PLANS ONLY
<b>DOCUMENT NOT CONSIDERED FINAL UNLESS ALL SIGNATURES COMPLETED</b>	

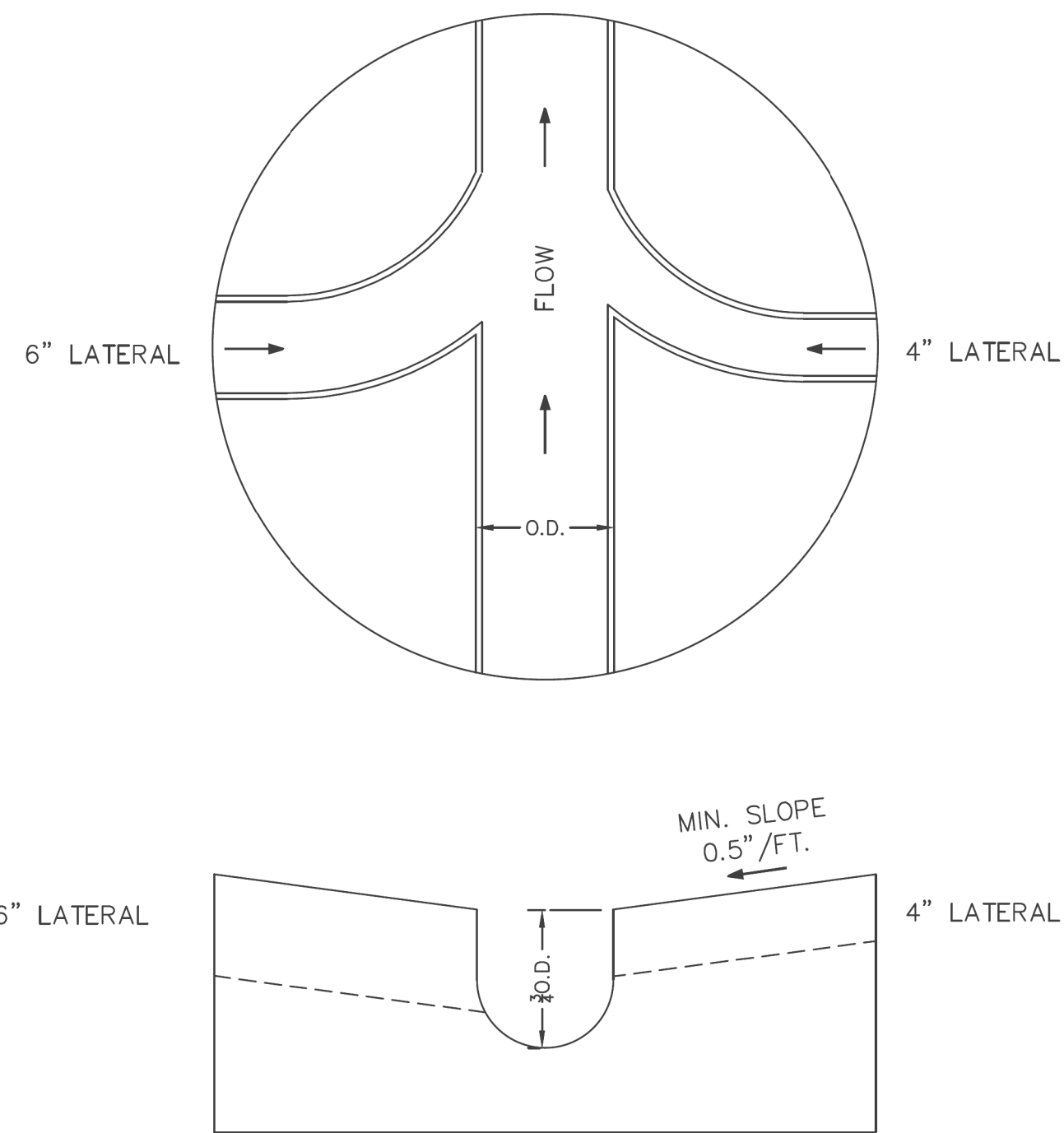
## UTILITY CONSTRUCTION

**NOTES:**

1. MANHOLE TO BE BUILT IN ACCORDANCE WITH TOWN STANDARD DETAILS FOR 4' AND/OR 5' MANHOLES.
2. OUTSIDE DROP SHALL NOT ENTER MANHOLE IN CONE SECTION.
3. TEE AND 90° BEND CONNECTED TO PIPE WITH ~~MEGA-LUG TYPE RIGID RESTRAINTS~~ RESTRAINED MECHANICAL JOINT.



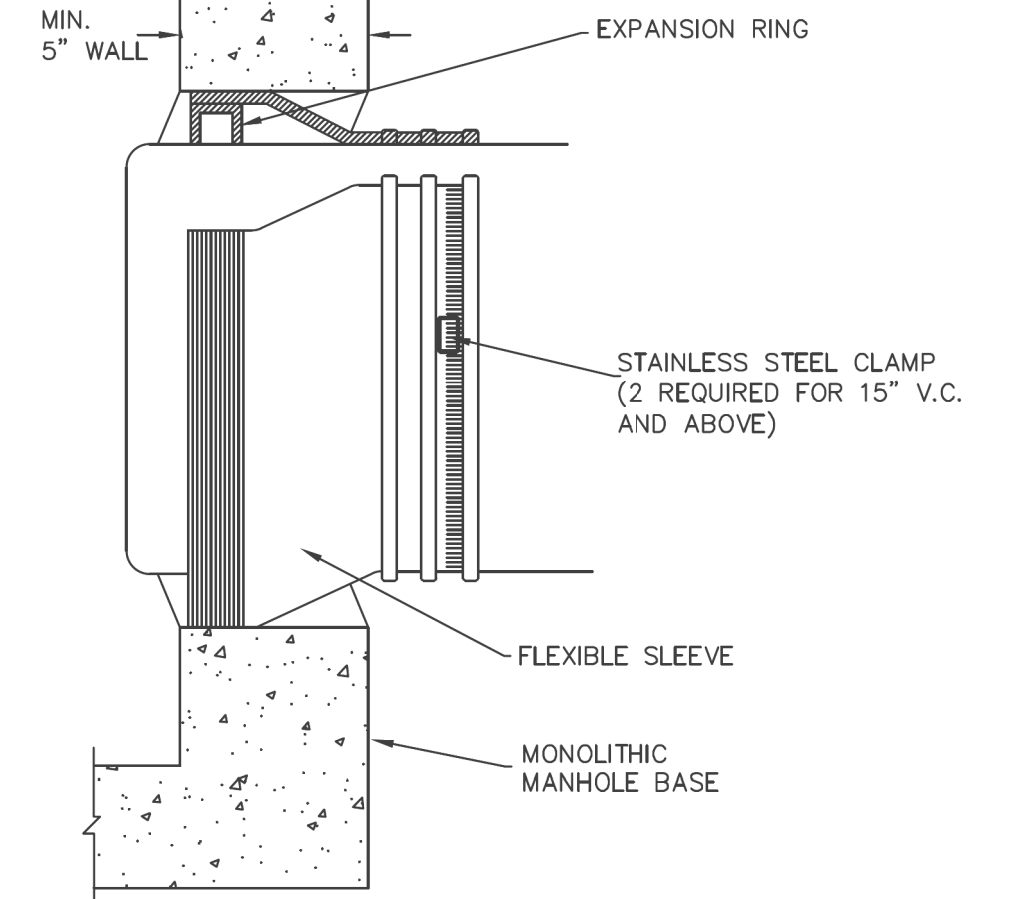
	<b>TOWN OF MOORESVILLE</b>	SEWER SYSTEMS	June 2018
	STANDARD DETAIL	OUTSIDE DROP MANHOLE	Revision 2
			NTS S-8.5



**NOTES:**

1. O.D. = SEWER MAIN OUTSIDE PIPE DIAMETER. (MIN. 8 INCHES)
2. MANHOLES SHALL HAVE PRECAST, 4000 PSI CONCRETE INVERTS. INVERT DEPTH = OUTSIDE DIAMETER OF PIPE INVERT WIDTH = OUTSIDE DIAMETER OF PIPE
3. EACH LATERAL CONNECTION SHALL HAVE A PRECAST INVERT DIRECTING FLOW IN THE DIRECTION OF THE SEWER. INVERT DEPTH = OUTSIDE DIAMETER OF PIPE INVERT WIDTH = OUTSIDE DIAMETER OF PIPE

	<b>TOWN OF MOORESVILLE</b>	SEWER SYSTEMS	January 2014
	STANDARD DETAIL	MANHOLE INVERTS	Revision 2
			NTS S-9.0



**NOTES:**

1. FLEXIBLE MANHOLE SLEEVES SHALL CONFORM TO ASTM 923. SLEEVES BY PRESS-SEAL GASKET CORPORATION, EPCO INC. OR NPC INC. OR EQUIVALENT ARE ACCEPTABLE. MAXIMUM DEFLECTION FOR SLEEVE IS 7" (12%). SLOPES GREATER THAN 12% MUST HAVE SLEEVES DESIGNED FOR HIGHER DEFLECTION.
2. 1/2" x 3" RUBBER LINER ADAPTER GASKET BY PRESS-SEAL GASKET CORP. MUST BE USED FOR D.I. PIPE. IF FLEXIBLE SLEEVE IS DESIGNED FOR V.C. PIPE GASKET TO BE INSTALLED UNDER S.S. CLAMP BETWEEN PIPE AND FLEXIBLE SLEEVE.

	<b>TOWN OF MOORESVILLE</b>	SEWER SYSTEMS	January 2009
	STANDARD DETAIL	FLEXIBLE MANHOLE SLEEVE	Revision 1
			NTS S-10.0