

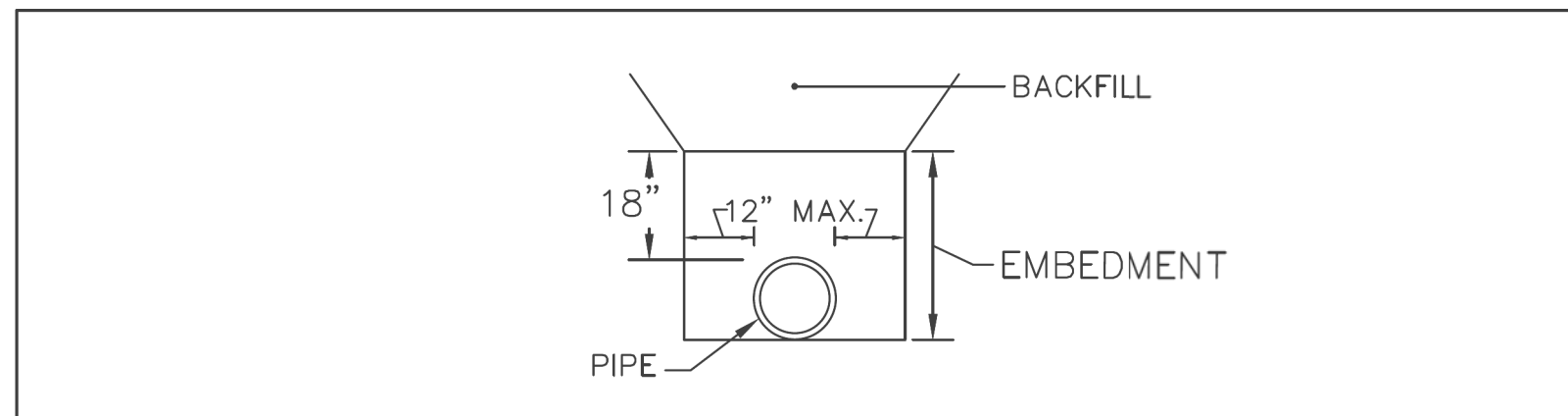
# PROJECT TYPICAL DETAILS



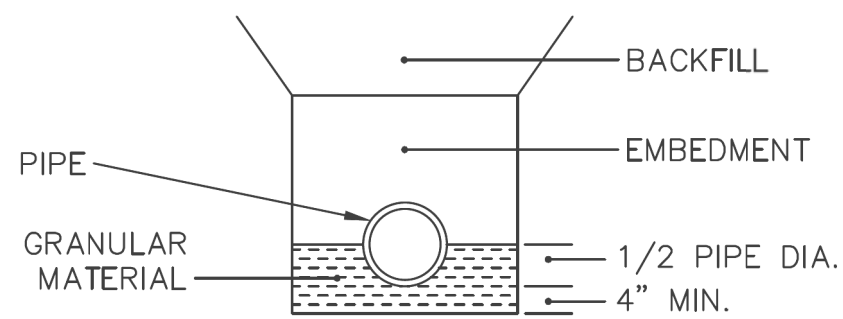
Stantec Consulting Services Inc.  
 801 Jones Franklin Road  
 Suite 300  
 Raleigh, NC 27606  
 Tel. (919) 851-6866  
 Fax. (919) 851-7024  
 www.stantec.com  
 License No. F-0672

PROJECT REFERENCE NO. <b>R-3833C</b>	SHEET NO. <b>UC-03D</b>
DESIGNED BY: MCM	
DRAWN BY: RGR	
CHECKED BY: MCM	
APPROVED BY:	
REVISED:	
NORTH CAROLINA DEPARTMENT OF TRANSPORTATION UTILITIES ENGINEERING SEC. PHONE: (919) 707-6690 FAX: (919) 250-4151	8/24/2023 UTILITY CONSTRUCTION PLANS ONLY
<b>DOCUMENT NOT CONSIDERED FINAL      UNLESS ALL SIGNATURES COMPLETED</b>	

## UTILITY CONSTRUCTION



ORDINARY PIPE BEDDING



TYPE "A" BEDDING

BEDDING	LIMITING INVERT DEPTHS				
	PIPE DIAMETER				
	6"	8"	10"	12"	16"
ORDINARY	4'-20'	4'-15'	4'-10'	4'-10'	4'-10'
TYPE "A"	-	15'-20'	10'-20'	10'-20'	10'-20'

**NOTES**

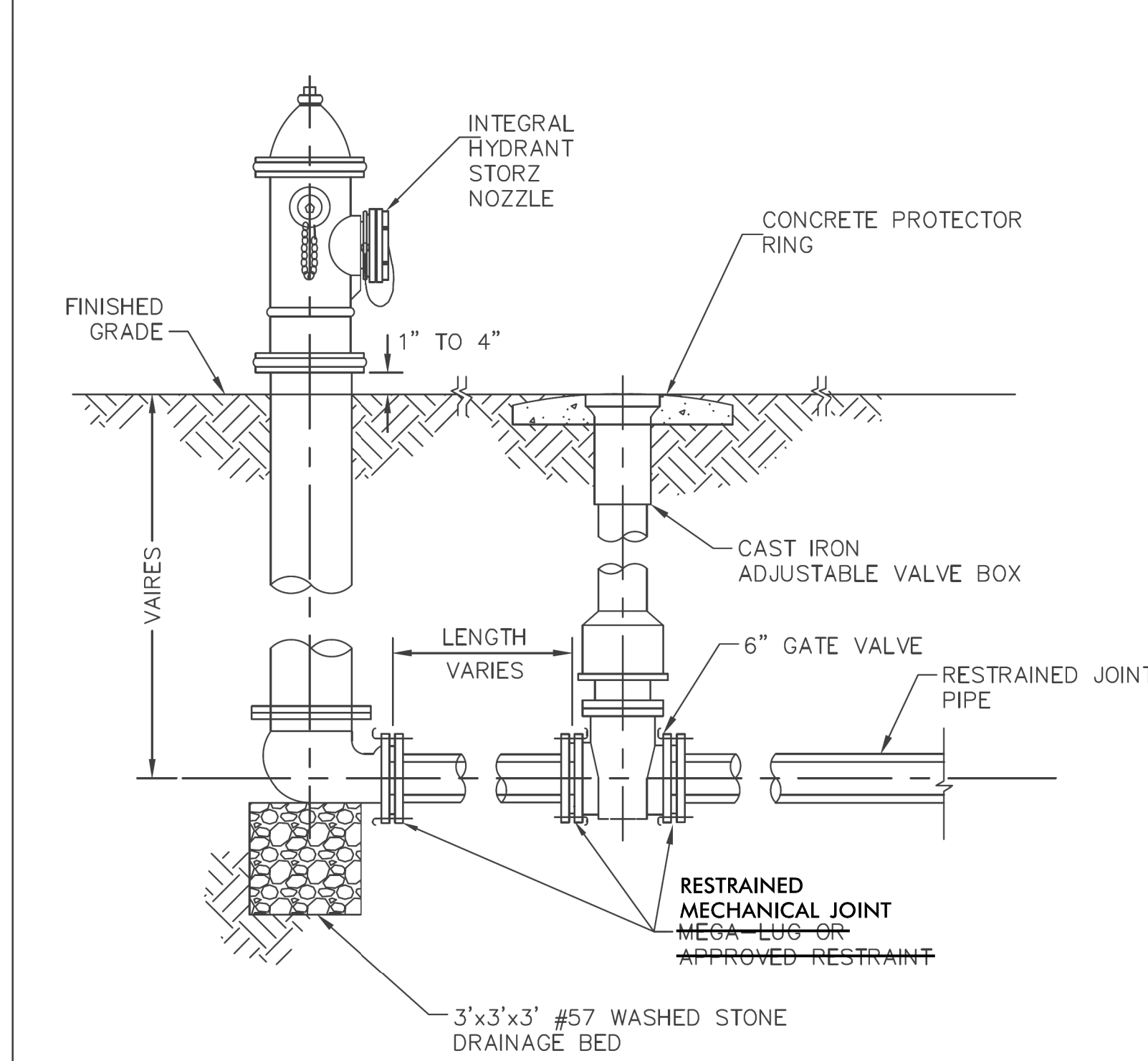
- PIPES AT DEPTHS GREATER THAN 12' MUST BE APPROVED BY THE DIRECTOR OF ENGINEERING.
- PIPE BEDDING SHALL BE DESIGNED ACCORDING TO MANUFACTURER'S RECOMMENDATIONS.
- PIPE EMBEDMENT SHALL BE PLACED IN A MAXIMUM OF 6" LAYERS & COMPACTED TO 95% OF THE MAXIMUM LABORATORY DRY DENSITY AS DETERMINED BY THE STANDARD PROCTOR METHOD.
- PIPE EMBEDMENT SHALL EXTEND TO FINISHED GRADE FOR PIPELINES WITHIN ROAD RIGHT-OF-WAY.



**TOWN OF MOORESVILLE**  
 STANDARD DETAIL

WATER SYSTEMS  
 WATERLINE PIPING  
 TRENCHING & BACKFILLING  
 (UP TO 20' DEEP)

January 2009  
 Revision 1  
 NTS W - 8.0



**NOTE:**

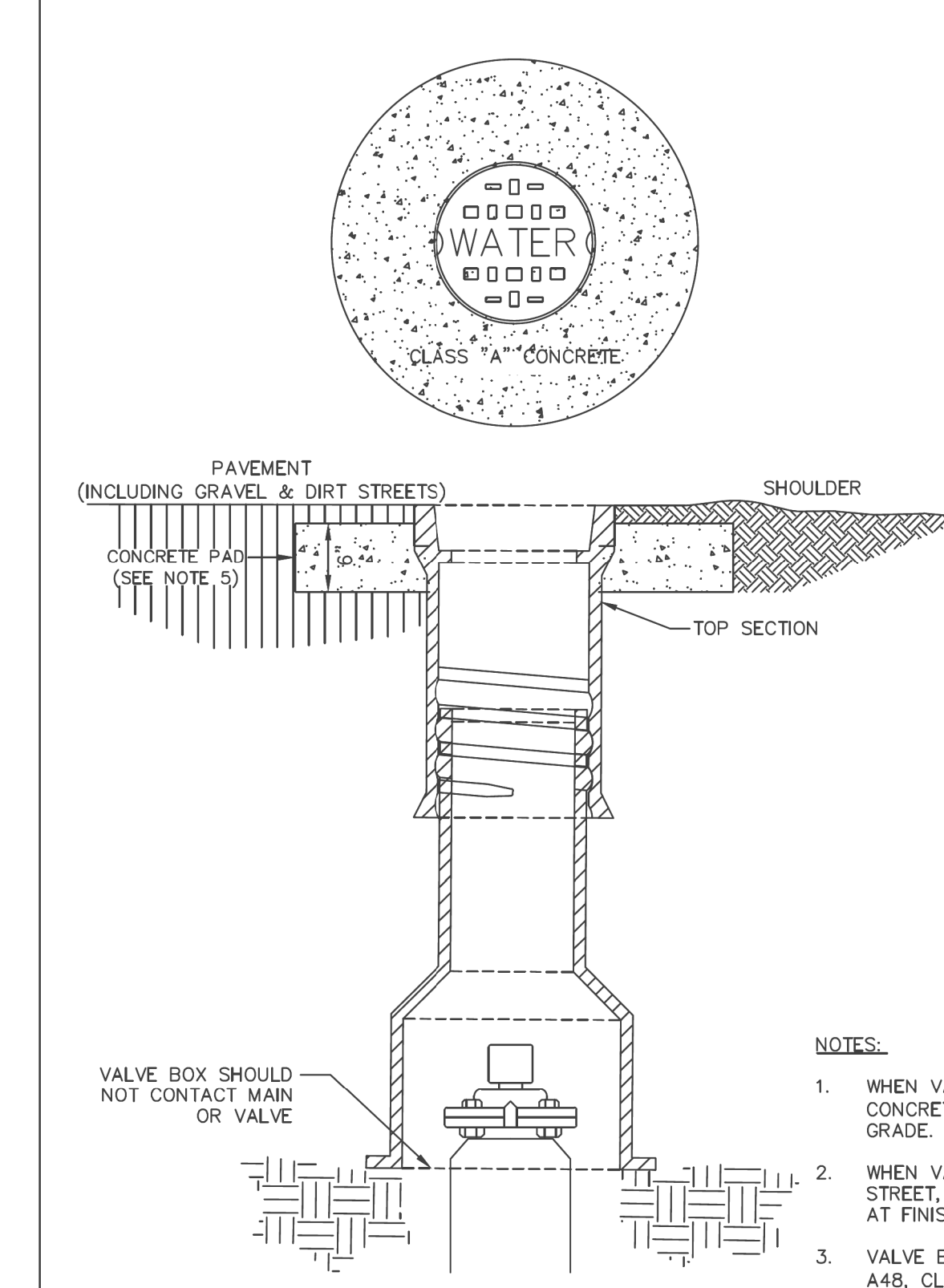
- WATER LINES 6" OR LARGER SHALL HAVE FIRE HYDRANT AS PERMANENT BLOW OFF.



**TOWN OF MOORESVILLE**  
 STANDARD DETAIL

WATER SYSTEMS  
 FIRE HYDRANT  
 BLOW OFF

June 2018  
 Revision 2  
 NTS W - 12.0



**NOTES:**

- WHEN VALVE IS IN PAVEMENT TOP OF CONCRETE PAD TO BE 2" BELOW FINISH GRADE.
- WHEN VALVE IS ON GRAVEL OR DIRT STREET, TOP OF CONCRETE PAD TO BE AT FINISH GRADE.
- VALVE BOX WILL CONFORM TO ASTM A48, CLASS 30B. SEE SECTION 3.1(e).
- IF VALVE BOX IS TO BE EXTENDED, ONLY DIP MAY BE USED.
- BLACK COLORED CONCRETE SHALL BE USED FOR THE COLLAR WHEN LOCATED IN ASPHALT PAVEMENT.



**TOWN OF MOORESVILLE**  
 STANDARD DETAIL

WATER SYSTEMS  
 ROUND TOP VALVE  
 BOX INSTALLATION

June 2018  
 Revision 2  
 NTS W - 15.0