
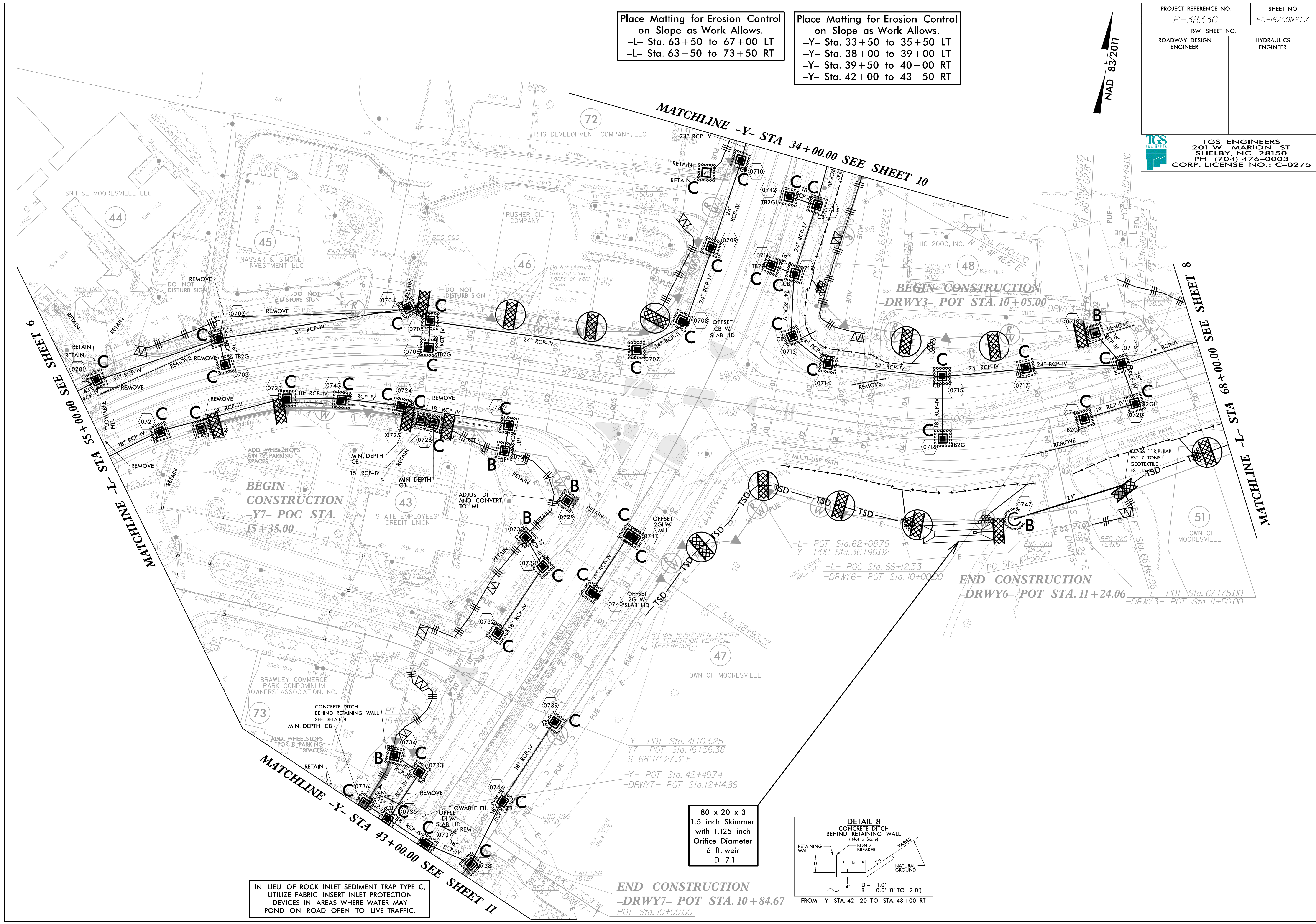


Place Matting for Erosion Control  
on Slope as Work Allows.  
-L- Sta. 63+50 to 67+00 LT  
-L- Sta. 63+50 to 73+50 RT

Place Matting for Erosion Control  
on Slope as Work Allows.  
-Y- Sta. 33+50 to 35+50 LT  
-Y- Sta. 38+00 to 39+00 LT  
-Y- Sta. 39+50 to 40+00 RT  
-Y- Sta. 42+00 to 43+50 RT

PROJECT REFERENCE NO. R-3833C	SHEET NO. EC-16/CONST.7
RW SHEET NO.	
ROADWAY DESIGN ENGINEER	HYDRAULICS ENGINEER
 <b>TGS ENGINEERS</b> 201 W MARION ST SHELBY, NC 28150 PH (704) 476-0003 CORP. LICENSE NO.: C-0275	

NAD 83/2011



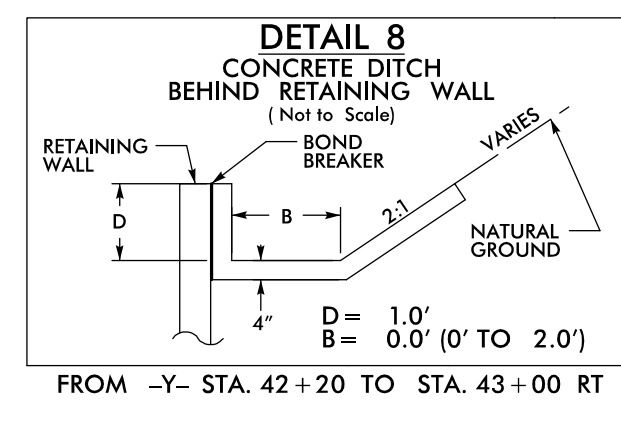
MATCHLINE -L- STA 35+00.00 SEE SHEET 6

MATCHLINE -Y- STA 34+00.00 SEE SHEET 10

MATCHLINE -L- STA 68+00.00 SEE SHEET 8

IN LIEU OF ROCK INLET SEDIMENT TRAP TYPE C,  
UTILIZE FABRIC INSERT INLET PROTECTION  
DEVICES IN AREAS WHERE WATER MAY  
POND ON ROAD OPEN TO LIVE TRAFFIC.

80 x 20 x 3  
1.5 inch Skimmer  
with 1.125 inch  
Orifice Diameter  
6 ft. weir  
ID 7.1



END CONSTRUCTION  
-DRWY7- POT STA. 10+84.67  
POT STA. 10+00.00

END CONSTRUCTION  
-DRWY6- POT STA. 11+24.06  
-L- POT Sta. 67+75.00  
-DRWY3- POT Sta. 11+50.00

-L- POT Sta. 62+08.79  
-Y- POC Sta. 36+96.02  
-L- POC Sta. 66+12.33  
-DRWY6- POT Sta. 10+00.00

-Y- POT Sta. 41+03.25  
-Y- POT Sta. 16+56.38  
S 68° 17' 27.3" E  
-Y- POT Sta. 42+49.74  
-DRWY7- POT Sta. 12+14.86

BEGIN CONSTRUCTION  
-Y7- POC STA. 15+35.00

BEGIN CONSTRUCTION  
-DRWY3- POT STA. 10+05.00