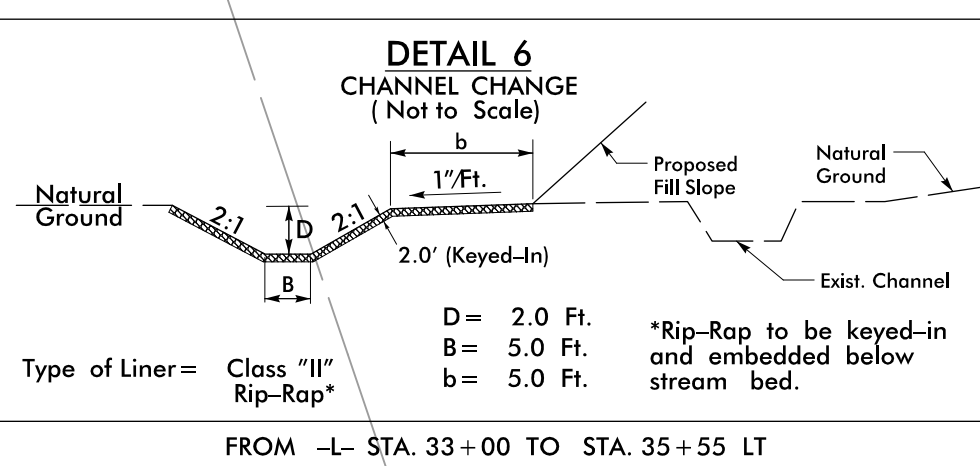
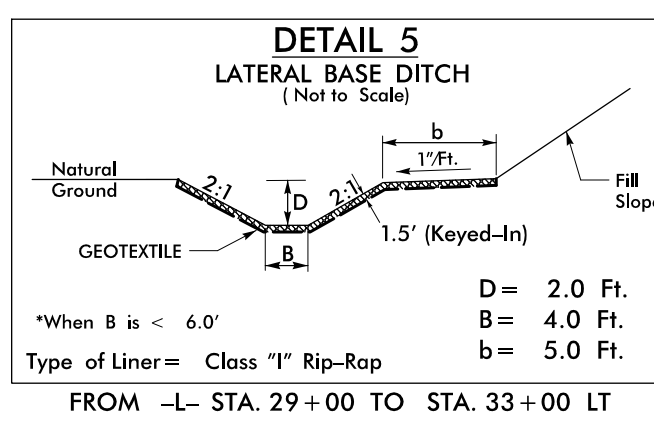


-L-
 PI Sta 29+82.38
 $\Delta = 25^{\circ} 07' 19.4" (RT)$
 $D = 4' 46' 28.7"$
 $L = 526.16'$
 $T = 267.37'$
 $E = 1,200.00'$
 $\Delta = .04$
 $\Delta = 49'$

-DRWY2-
 PI Sta 38+56.09
 $\Delta = 46^{\circ} 35' 27.8" (LT)$
 $D = 5' 43' 46.5"$
 $L = 813.17'$
 $T = 430.58'$
 $R = 1,000.00'$
 $SE = .04$
 $INC = 49'$

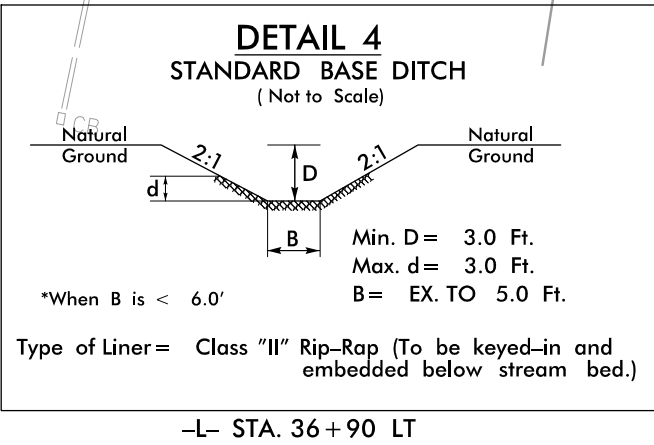
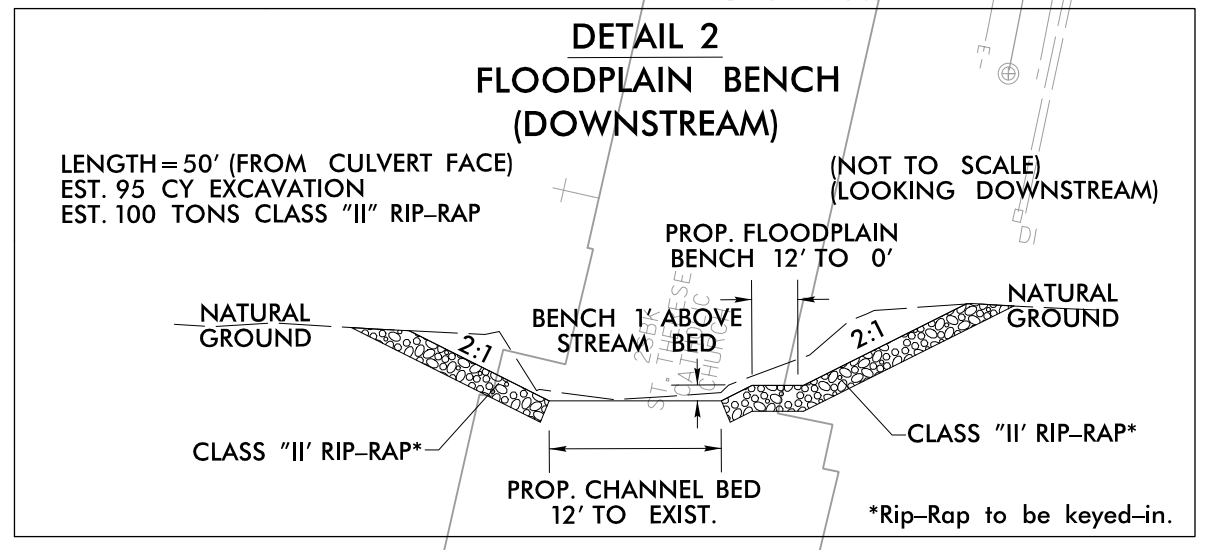
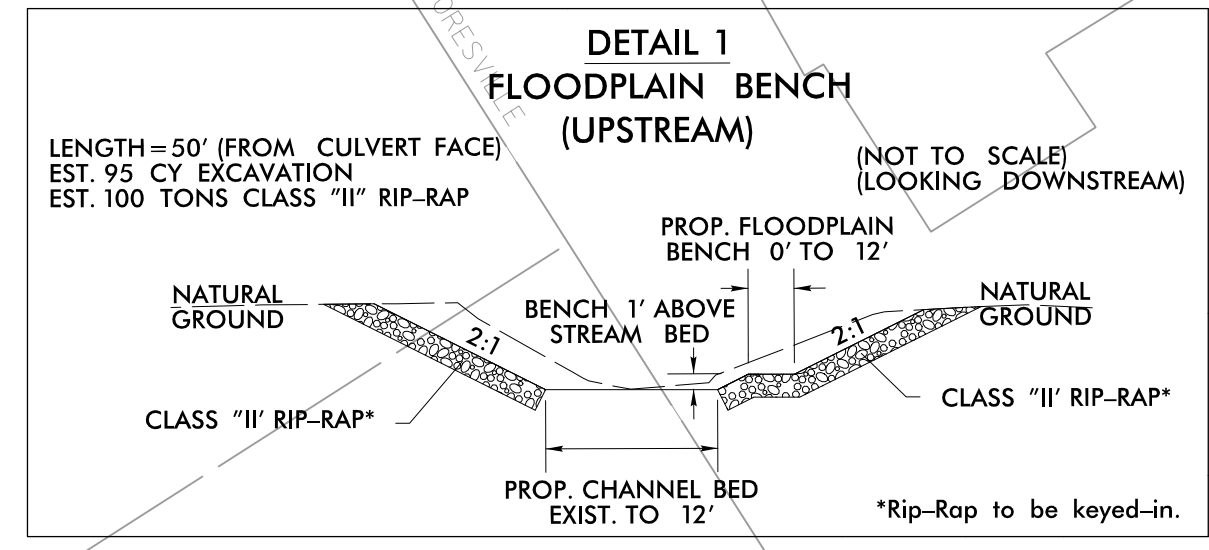
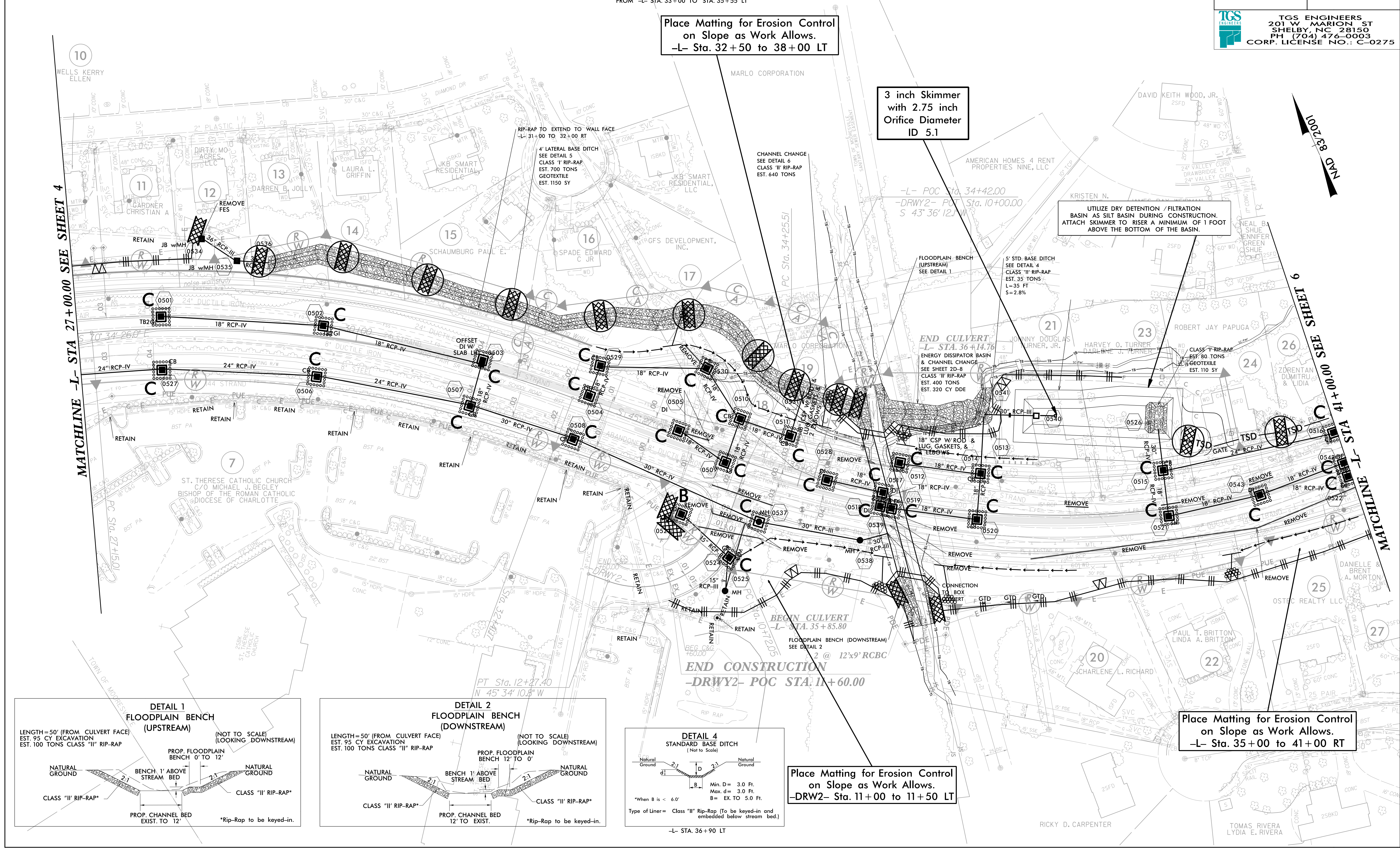
-DRWY2-
 PI Sta 11+71.47
 $\Delta = 90^{\circ} 49' 37.1" (RT)$
 $D = 58' 27' 54.3"$
 $L = 155.35'$
 $T = 99.42'$
 $R = 98.00'$
 $SE = SEE PLANS$
 $INC = 18'$



Place Matting for Erosion Control on Slope as Work Allows.
 -L- Sta. 32+50 to 38+00 LT

3 inch Skimmer with 2.75 inch Orifice Diameter ID 5.1

UTILIZE DRY DETENTION / FILTRATION BASIN AS SILT BASIN DURING CONSTRUCTION. ATTACH SKIMMER TO RISER A MINIMUM OF 1 FOOT ABOVE THE BOTTOM OF THE BASIN.



Place Matting for Erosion Control on Slope as Work Allows.
 -DRWY2- Sta. 11+00 to 11+50 LT

Place Matting for Erosion Control on Slope as Work Allows.
 -L- Sta. 35+00 to 41+00 RT

MATCHLINE -L- STA 27+00.00 SEE SHEET 4

MATCHLINE -L- STA 41+00.00 SEE SHEET 6

