
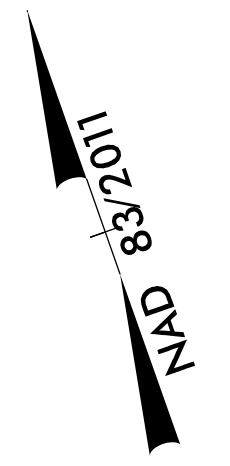
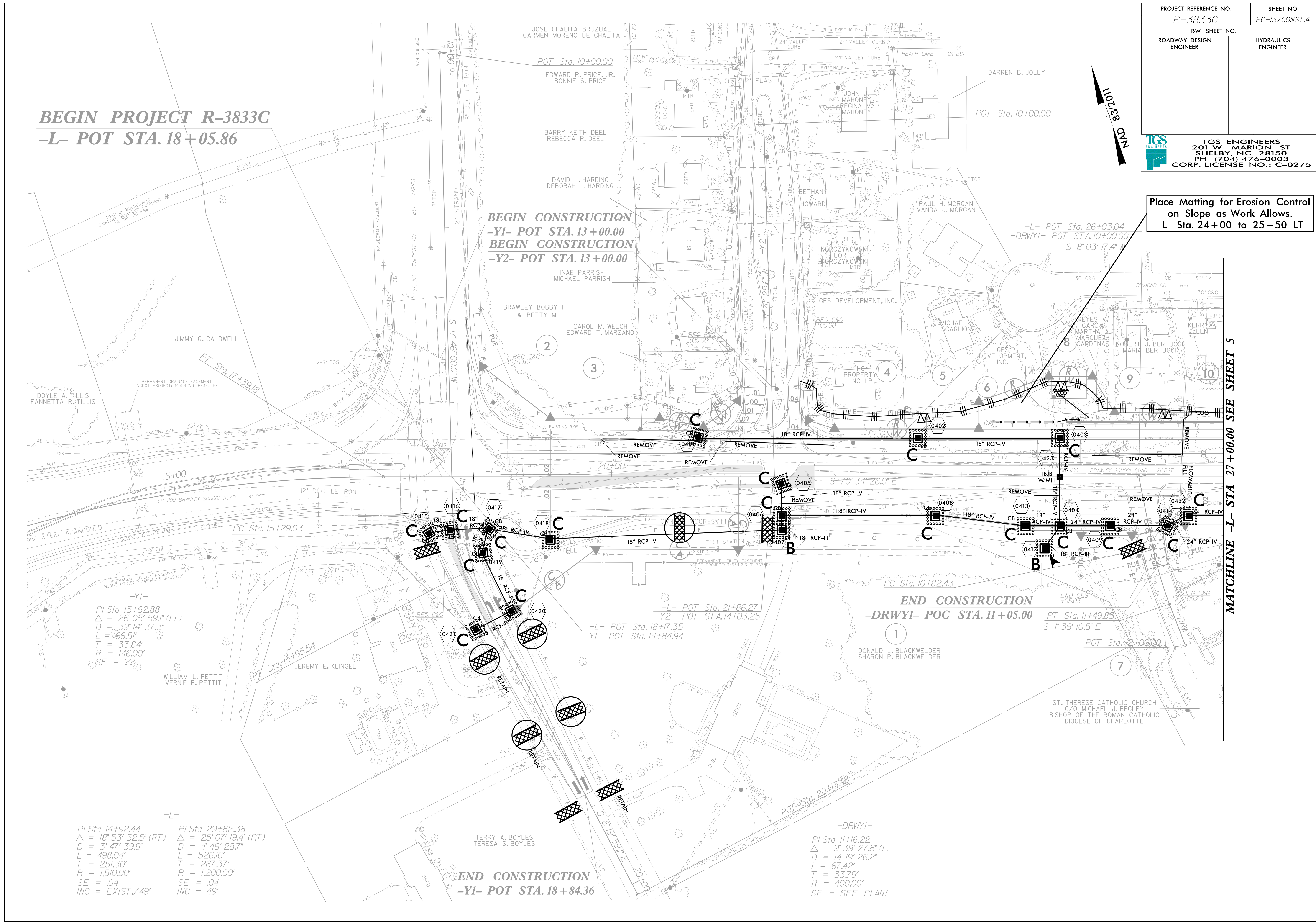


PROJECT REFERENCE NO. <i>R-3833C</i>	SHEET NO. <i>EC-13/CONST.4</i>
RW SHEET NO.	
ROADWAY DESIGN ENGINEER	HYDRAULICS ENGINEER
 <b>TGS ENGINEERS</b> 201 W. MARION ST SHELBY, NC 28150 PH (704) 476-0003 CORP. LICENSE NO.: C-0275	

**BEGIN PROJECT R-3833C**  
**-L- POT STA. 18+05.86**



Place Matting for Erosion Control  
 on Slope as Work Allows.  
 -L- Sta. 24+00 to 25+50 LT



-Y1-  
 PI Sta 15+62.88  
 $\Delta = 26^{\circ} 05' 59.1''$  (LT)  
 $D = 39' 14' 37.3''$   
 $L = 66.51'$   
 $T = 33.84'$   
 $R = 146.00'$   
 $SE = ??$

-L-  
 PI Sta 14+92.44  
 $\Delta = 18^{\circ} 53' 52.5''$  (RT)  
 $D = 3' 47' 39.9''$   
 $L = 498.04'$   
 $T = 251.30'$   
 $R = 1,510.00'$   
 $SE = .04$   
 $INC = EXIST./49'$

PI Sta 29+82.38  
 $\Delta = 25^{\circ} 07' 19.4''$  (RT)  
 $D = 4' 46' 28.7''$   
 $L = 526.16'$   
 $T = 267.37'$   
 $R = 1,200.00'$   
 $SE = .04$   
 $INC = 49'$

**END CONSTRUCTION**  
**-Y1- POT STA. 18+84.36**

-DRWY1-  
 PI Sta 11+16.22  
 $\Delta = 9^{\circ} 39' 27.8''$  (L)  
 $D = 14' 19' 26.2''$   
 $L = 67.42'$   
 $T = 33.79'$   
 $R = 400.00'$   
 $SE = SEE PLANS$

MATCHLINE -L- STA 27+00.00 SEE SHEET 5