
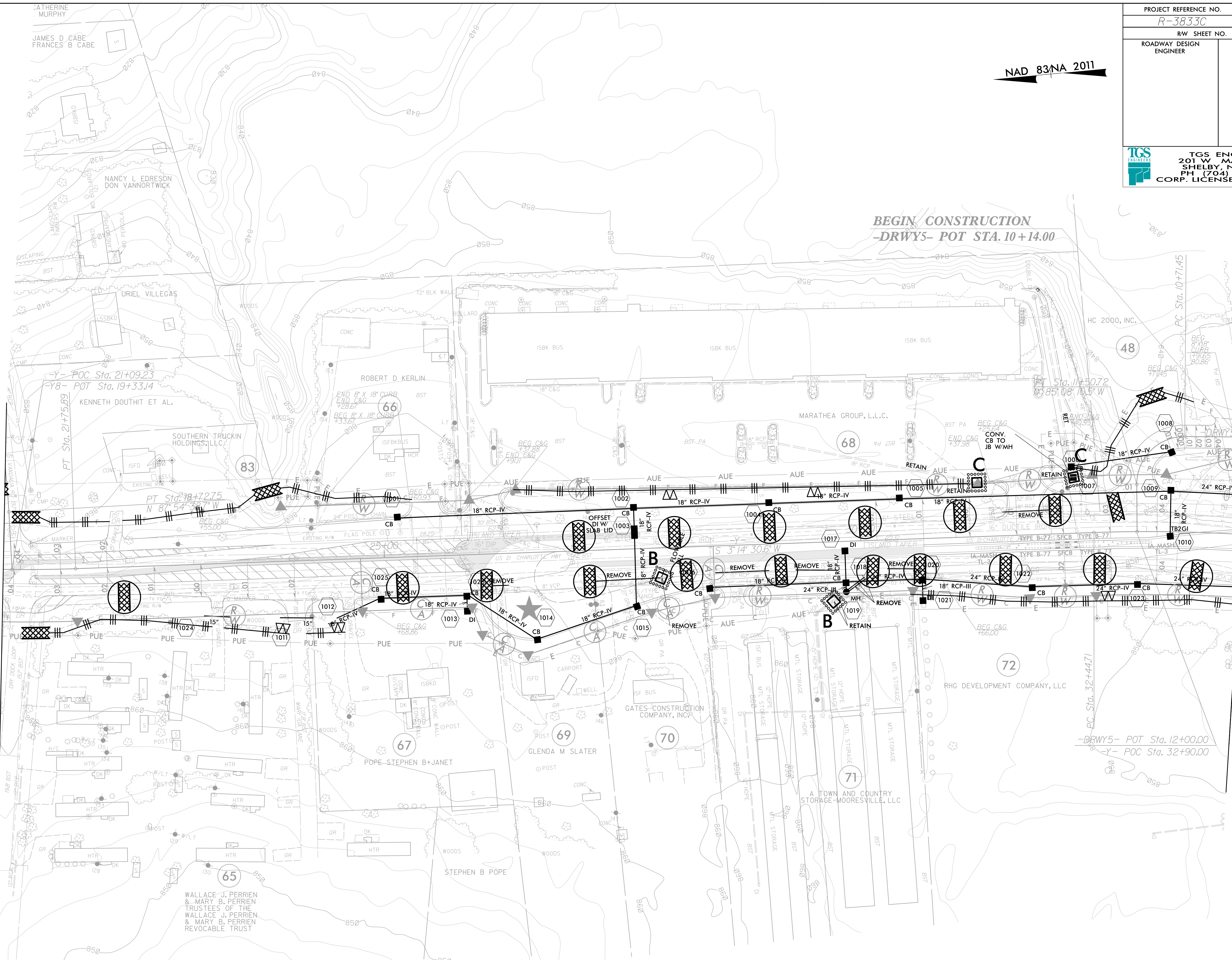


PROJECT REFERENCE NO. R-3833C	SHEET NO. EC-11/CONST.10
RW SHEET NO.	
ROADWAY DESIGN ENGINEER	HYDRAULICS ENGINEER
 TGS ENGINEERS 201 W MARION ST SHELBY, NC 28150 PH (704) 476-0003 CORP. LICENSE NO.: C-0275	

NAD 83/NA 2011

MATCHLINE -Y- STA 21+00.00 SEE SHEET 9

MATCHLINE -Y- STA 34+00.00 SEE SHEET 7



BEGIN CONSTRUCTION
-DRWY5- POT STA. 10+14.00

-DRWY5- POT STA. 12+00.00
Y- POC STA. 32+90.00

- | | | |
|--|---|---|
| <p>CLEARING AND GRUBBING
EROSION CONTROL FOR
CONSTRUCTION SHEET 10</p> | <p>NOTE:
PLACE TEMPORARY ROCK SEDIMENT DAMS TYPE - B
AND TEMPORARY ROCK SILT CHECKS TYPE - A AT
DRAINAGE OUTLETS.</p> | <p>IN LIEU OF ROCK INLET SEDIMENT TRAP TYPE C,
UTILIZE FABRIC INSERT INLET PROTECTION
DEVICES IN AREAS WHERE WATER MAY
POND ON ROAD OPEN TO LIVE TRAFFIC.</p> |
|--|---|---|