
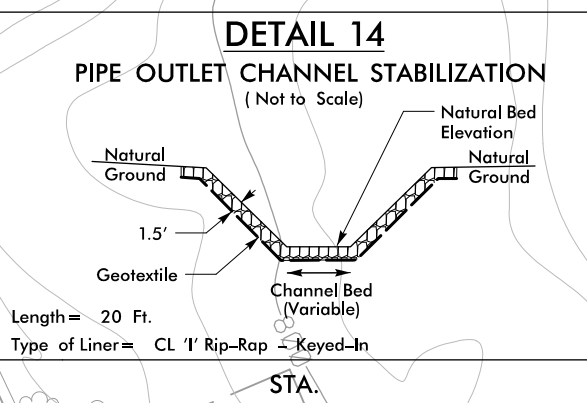
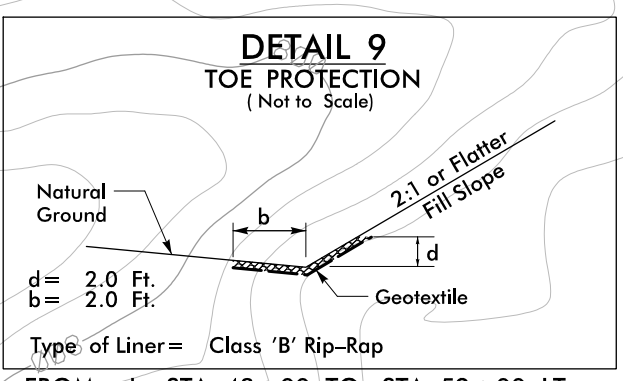
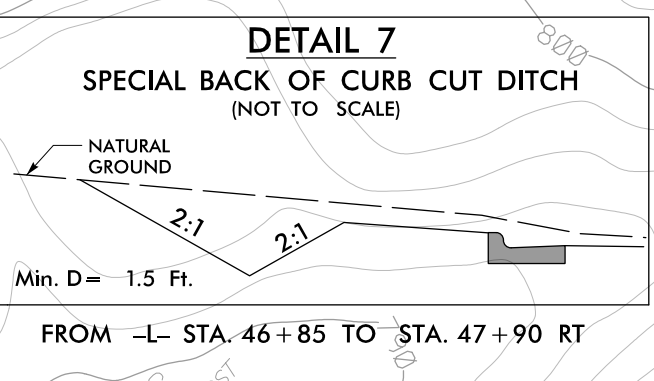
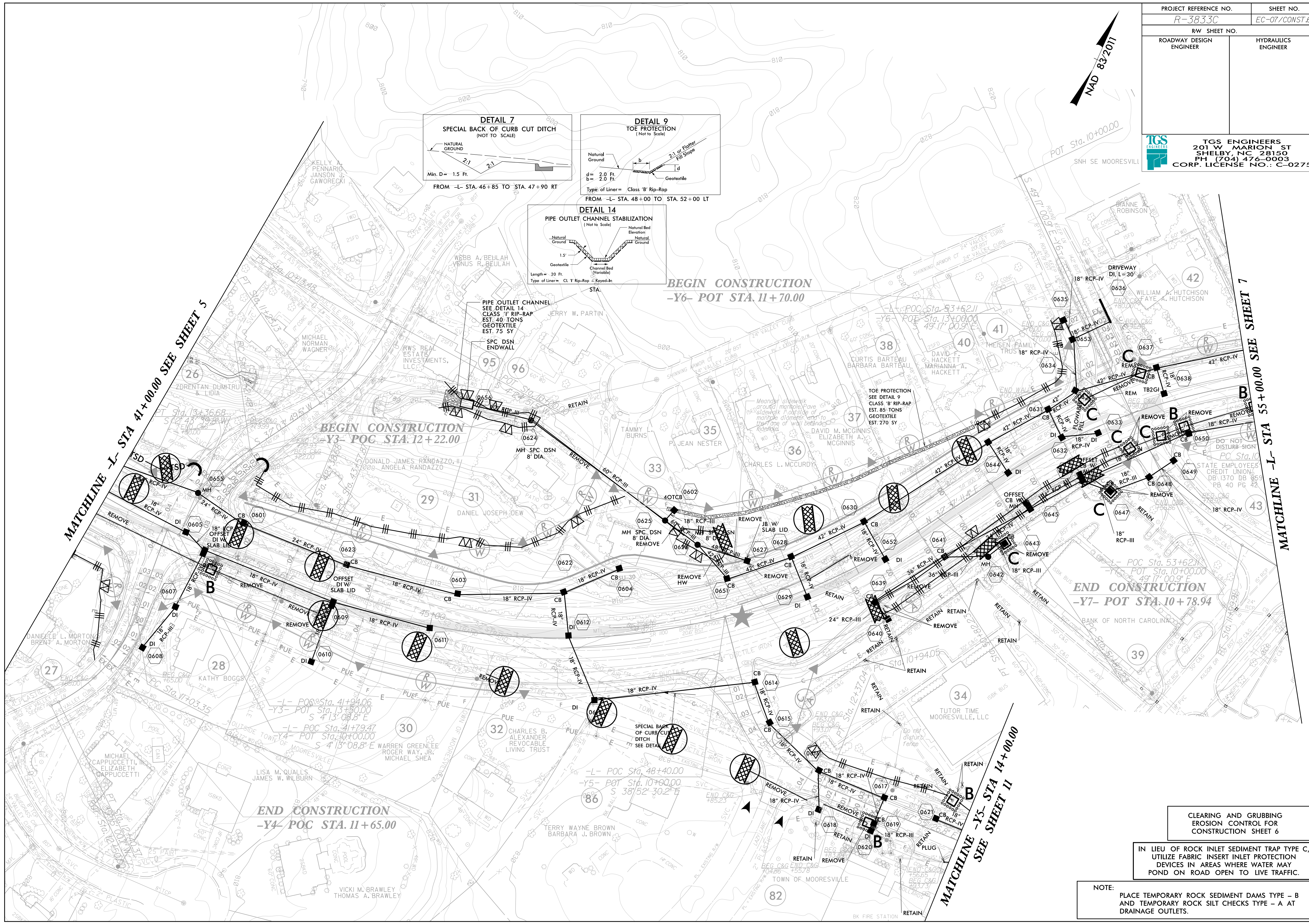


PROJECT REFERENCE NO. R-3833C	SHEET NO. EC-07/CONST.6
RW SHEET NO.	
ROADWAY DESIGN ENGINEER	HYDRAULICS ENGINEER
 TGS ENGINEERS 201 W MARION ST SHELBY, NC 28150 PH (704) 476-0003 CORP. LICENSE NO.: C-0275	



PIPE OUTLET CHANNEL
SEE DETAIL 14
CLASS '1' RIP-RAP
EST. 40 TONS
GEOTEXTILE
EST. 75 SY

SPC DSN
ENDWALL

BEGIN CONSTRUCTION
-Y6- POT STA. 11+70.00

BEGIN CONSTRUCTION
-Y3- POC STA. 12+22.00

END CONSTRUCTION
-Y7- POT STA. 10+78.94

END CONSTRUCTION
-Y4- POC STA. 11+65.00

CLEARING AND GRUBBING
EROSION CONTROL FOR
CONSTRUCTION SHEET 6

IN LIEU OF ROCK INLET SEDIMENT TRAP TYPE C,
UTILIZE FABRIC INSERT INLET PROTECTION
DEVICES IN AREAS WHERE WATER MAY
POND ON ROAD OPEN TO LIVE TRAFFIC.

NOTE:
PLACE TEMPORARY ROCK SEDIMENT DAMS TYPE - B
AND TEMPORARY ROCK SILT CHECKS TYPE - A AT
DRAINAGE OUTLETS.