

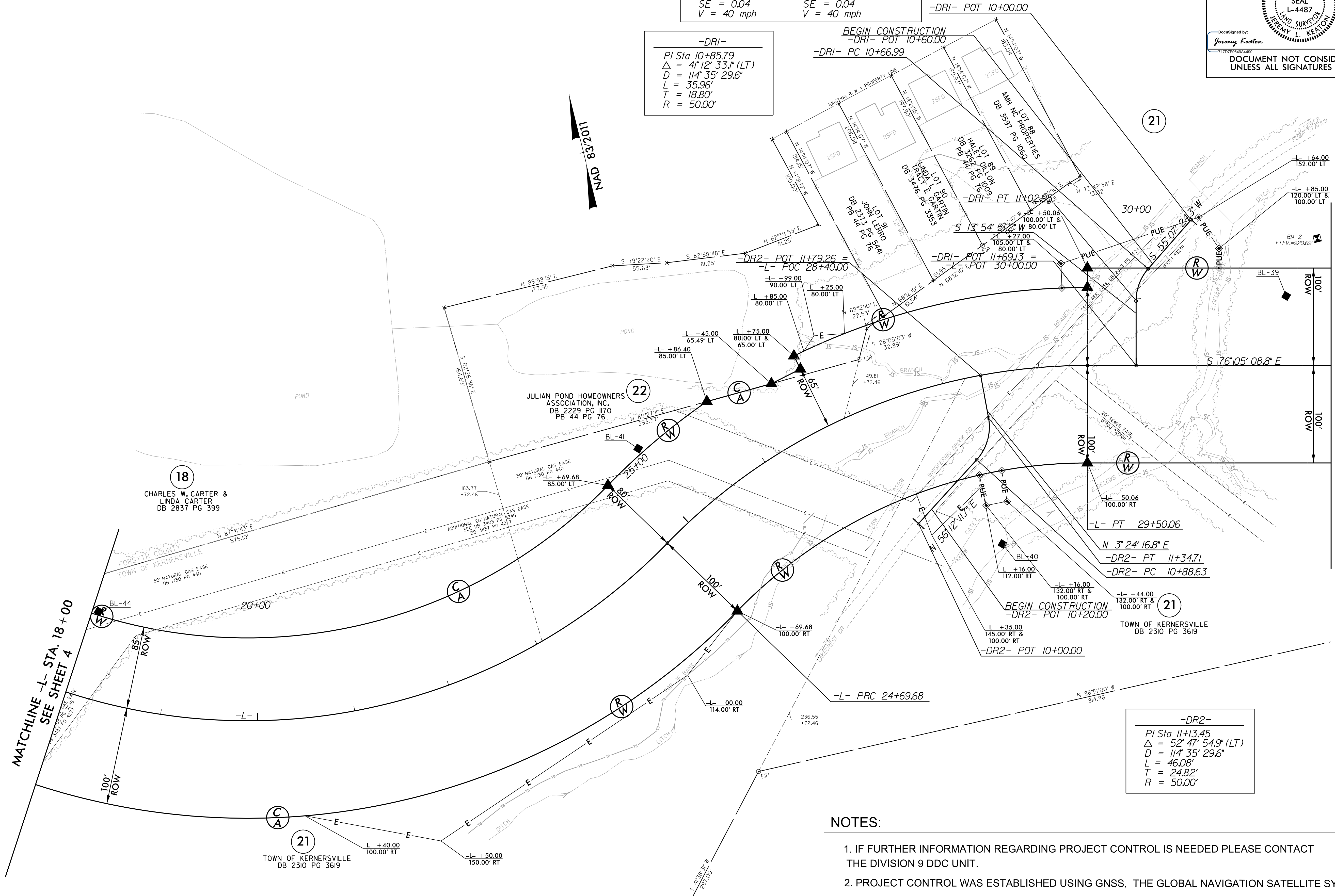
PROJECT REFERENCE NO.	SHEET NO.
U-6003	RW-5
<b>DIVISION 9 DDC</b>	
PROJECT SURVEYOR	
Documented by:	10/17/2023
DOCUMENT NOT CONSIDERED FINAL UNLESS ALL SIGNATURES COMPLETED	

-L-	
PI Sta 21+35.84	PI Sta 27+23.58
$\Delta = 79^\circ 42' 24.0"$ (LT)	$\Delta = 45^\circ 52' 20.5"$ (RT)
D = 9' 32" 57.5"	D = 9' 32" 57.5"
L = 834.69'	L = 480.37'
T = 500.85'	T = 253.90'
R = 600.00'	R = 600.00'
SE = 0.04	SE = 0.04
V = 40 mph	V = 40 mph

-DRI-	
PI Sta 10+85.79	
$\Delta = 41^\circ 12' 33.1"$ (LT)	
D = 114' 35" 29.6"	
L = 35.96'	
T = 18.80'	
R = 50.00'	

I, Jeremy L. Keaton, certify that the right of way and permanent easement monumentation for this project shown herein was completed under my direct and responsible charge from an actual survey made under my supervision; that all horizontal closures had a minimum ratio of precision of 1:10,000 (Class A). Field work was performed January 2019 to June 2023, and all coordinates are based on NAD83/2011; That this survey was performed to meet the requirements of 21NCAC 56.1600 as applicable.

This Survey of August, 2023.  
 Jeremy Keaton 10/17/2023  
 Professional Land Surveyor L-4487



-DR2-	
PI Sta 11+13.45	
$\Delta = 52^\circ 47' 54.9"$ (LT)	
D = 114' 35" 29.6"	
L = 46.08'	
T = 24.82'	
R = 50.00'	

**NOTES:**

1. IF FURTHER INFORMATION REGARDING PROJECT CONTROL IS NEEDED PLEASE CONTACT THE DIVISION 9 DDC UNIT.
2. PROJECT CONTROL WAS ESTABLISHED USING GNSS, THE GLOBAL NAVIGATION SATELLITE SYSTEM.
3. RIGHT OF WAY MONUMENTATION ESTABLISHED JANUARY 2019 TO JUNE 2023 .