

5/28/23

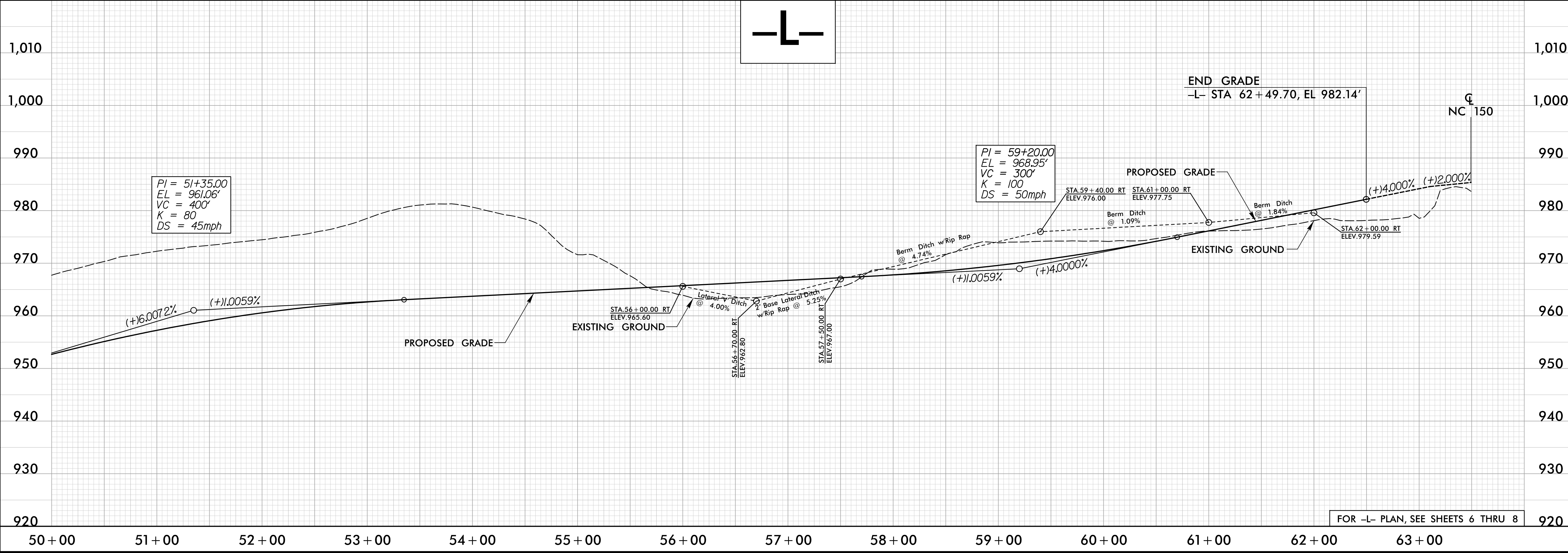
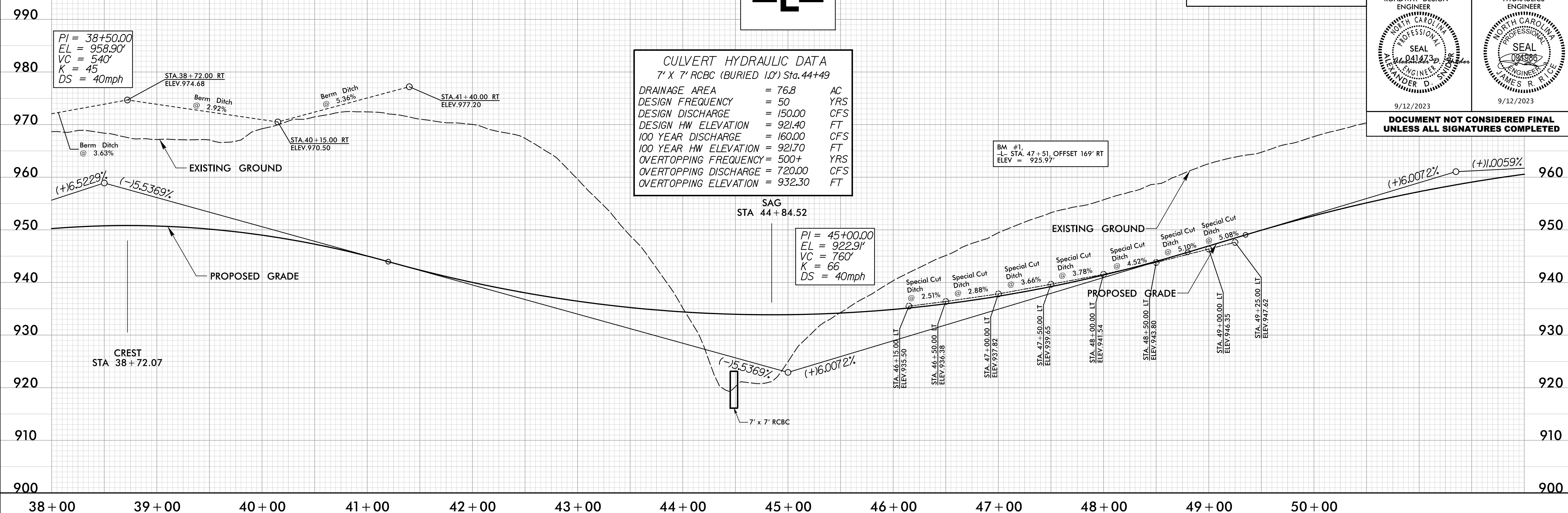


HDR Engineering, Inc. of the Carolinas
555 Fayetteville St, Suite 900, Raleigh, N.C. 27601
N.C.B.E.L.S. License Number: F-0116

PROJECT REFERENCE NO. U-6003	SHEET NO. 10
ROADWAY DESIGN ENGINEER ALEXANDER D. SMITH	HYDRAULICS ENGINEER JAMES R. RILEY
SEAL 041473	SEAL 081986
9/12/2023	9/12/2023

**DOCUMENT NOT CONSIDERED FINAL
UNLESS ALL SIGNATURES COMPLETED**

CULVERT HYDRAULIC DATA	
7' X 7' RCBC (BURIED 1.0') Sta. 44+49	
DRAINAGE AREA	= 76.8 AC
DESIGN FREQUENCY	= 50 YRS
DESIGN DISCHARGE	= 150.00 CFS
DESIGN HW ELEVATION	= 921.40 FT
100 YEAR DISCHARGE	= 160.00 CFS
100 YEAR HW ELEVATION	= 921.70 FT
OVERTOPPING FREQUENCY	= 500+ YRS
OVERTOPPING DISCHARGE	= 720.00 CFS
OVERTOPPING ELEVATION	= 932.30 FT



FOR -L- PLAN, SEE SHEETS 6 THRU 8

8/10/2023 00:03_r-dj...PSH10.dgn