


6/2/2019
 16-AUG-2023 13:09
 S:\Projects\Development\TIP\Projects\U-5824-NC666\Surveys\Control_Sheets\U5824_ddc.rwl.dgn
 J. Keaton

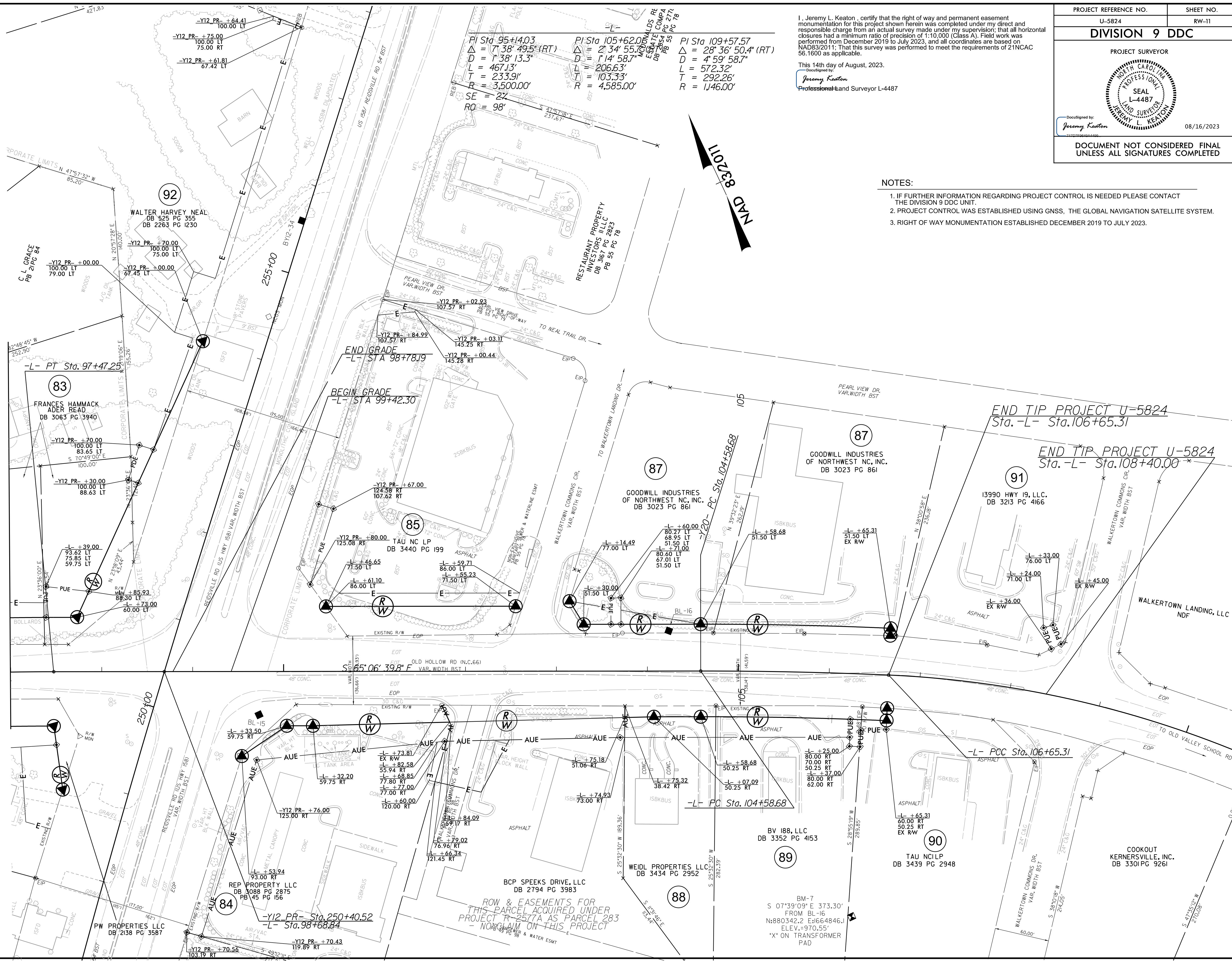
PROJECT REFERENCE NO.	SHEET NO.
U-5824	RW-11
DIVISION 9 DDC	
PROJECT SURVEYOR	
	
DocuSigned by: Jeremy Keaton	08/16/2023
DOCUMENT NOT CONSIDERED FINAL UNLESS ALL SIGNATURES COMPLETED	

I, Jeremy L. Keaton, certify that the right of way and permanent easement monumentation for this project shown herein was completed under my direct and responsible charge from an actual survey made under my supervision; that all horizontal closures had a minimum ratio of precision of 1:10,000 (Class A). Field work was performed from December 2019 to July 2023, and all coordinates are based on NAD83(2011). That this survey was performed to meet the requirements of 21NCAC 56.1600 as applicable.

This 14th day of August, 2023.
 DocuSigned by:
 Jeremy Keaton
 Professional Land Surveyor L-4487

- NOTES:**
1. IF FURTHER INFORMATION REGARDING PROJECT CONTROL IS NEEDED PLEASE CONTACT THE DIVISION 9 DDC UNIT.
 2. PROJECT CONTROL WAS ESTABLISHED USING GNSS. THE GLOBAL NAVIGATION SATELLITE SYSTEM.
 3. RIGHT OF WAY MONUMENTATION ESTABLISHED DECEMBER 2019 TO JULY 2023.

MATCHLINE -L- STA 97+00.00
 (SEE SHEET 10)



$PI\ Sta\ 95+14.03$
 $\Delta = 7'38''49.5''(RT)$
 $D = 7'38''13.3''$
 $L = 467.13'$
 $T = 233.91'$
 $R = 3,500.00'$
 $SE = 2'$
 $RO = 98'$

$PI\ Sta\ 105+62.00$
 $\Delta = 2'34''55.7''(RT)$
 $D = 7'14''58.7''$
 $L = 206.63'$
 $T = 103.33'$
 $R = 4,585.00'$

$PI\ Sta\ 109+57.57$
 $\Delta = 28'36''50.4''(RT)$
 $D = 4'59''58.7''$
 $L = 572.32'$
 $T = 292.26'$
 $R = 1,146.00'$

NAD 83(2011)

ROW & EASEMENTS FOR THIS PARCEL ACQUIRED UNDER PROJECT R-2577A AS PARCEL 283 - NORTH MAIN ON THIS PROJECT

END TIP PROJECT U-5824
 Sta. -L- Sta.106+65.31

END TIP PROJECT U-5824
 Sta. -L- Sta.108+40.00

-L- PCC Sta.106+65.31

-L- PC Sta.104+58.68

-L- Sta.250+40.52
 -L- Sta.98+68.84