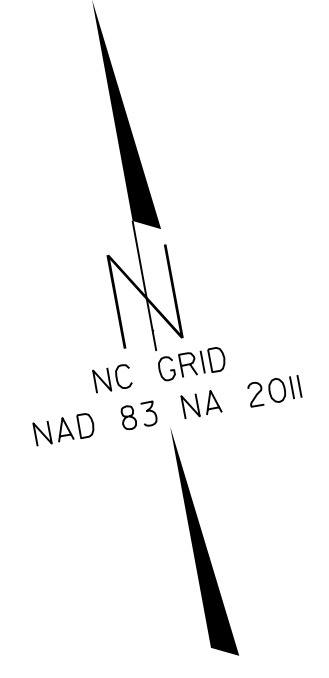


I, Jeremy L. Keaton, certify that the right of way and permanent easement monumentation for this project shown herein was completed under my direct and responsible charge from an actual survey made under my supervision; that all horizontal closures had a minimum ratio of precision of 1:10,000 (Class A). Field work was performed from December 2019 to July 2023, and all coordinates are based on NAD83/2011; That this survey was performed to meet the requirements of 21NCAC 56.1600 as applicable.

This 14th day of August, 2023.  
 Documented by:  
 Jeremy Keaton  
 Professional Land Surveyor L-4487

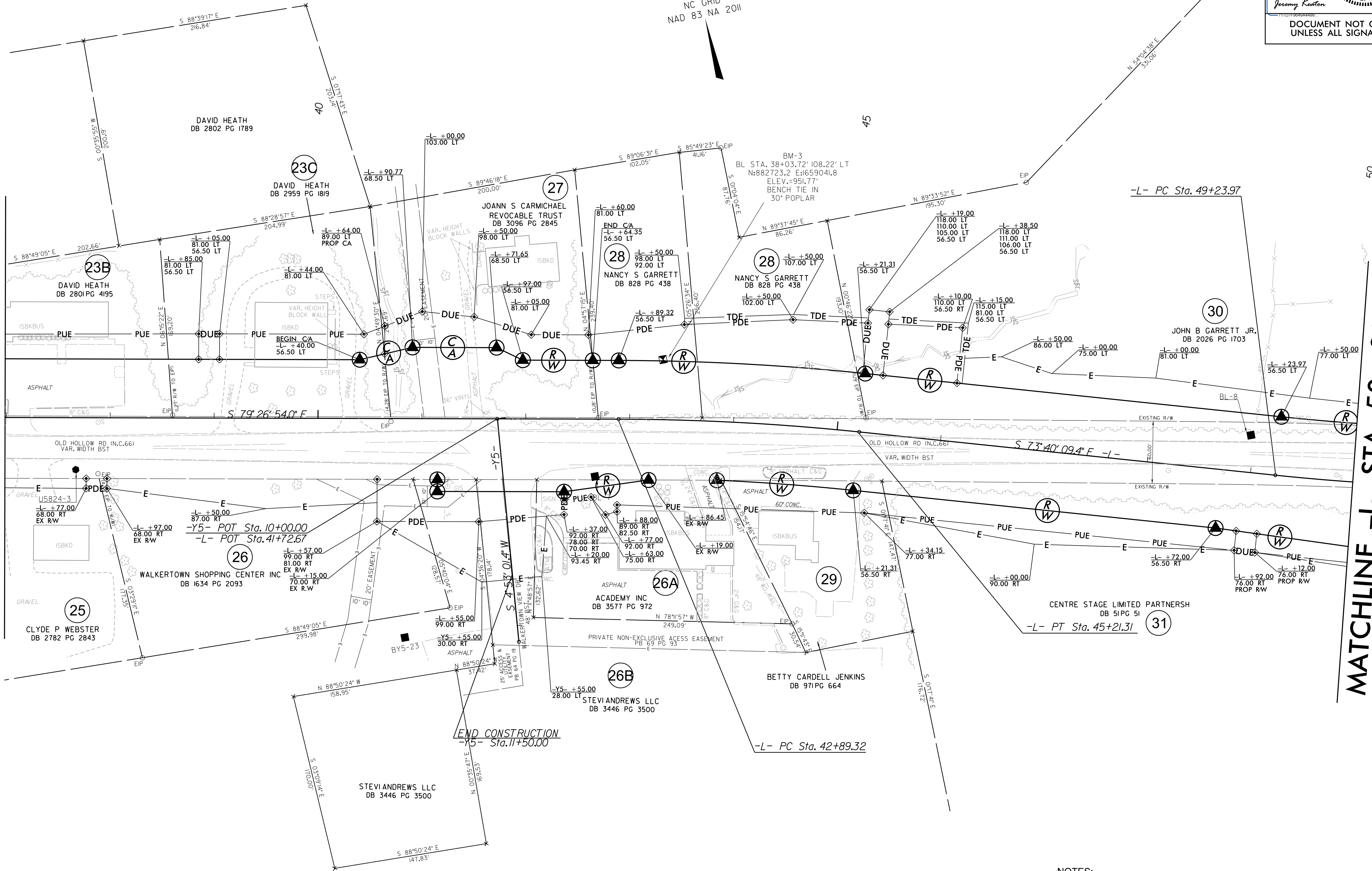
**L**

PI Sta 44+05.41	PI Sta 50+18.92
$\Delta = 5' 46' 44.5''$ (RT)	$\Delta = 4' 43' 39.8''$ (LT)
$D = 2' 29' 28.0''$	$D = 2' 29' 28.0''$
$L = 231.99'$	$L = 189.78'$
$T = 116.09'$	$T = 94.95'$
$R = 2,300.00'$	$R = 2,300.00'$
$SE = 3\%$	$SE = 3\%$
$RO = 144'$	$RO = 144'$



MATCHLINE -L- STA 37+00.00  
(SEE SHEET 5)

MATCHLINE -L- STA 50+00.00  
(SEE SHEET 7)



- NOTES:**
1. IF FURTHER INFORMATION REGARDING PROJECT CONTROL IS NEEDED PLEASE CONTACT THE DIVISION 9 DDC UNIT.
  2. PROJECT CONTROL WAS ESTABLISHED USING GNSS, THE GLOBAL NAVIGATION SATELLITE SYSTEM.
  3. RIGHT OF WAY MONUMENTATION ESTABLISHED DECEMBER 2019 TO JULY 2023.

16-AUG-2023 13:09 S:\Projects\_Development\ITP\_Development\U-5824-NC66\Surveys\Control\_Sheets\U5824\_ddc\_rw06.dgn  
 Jeremy L. Keaton AT 11/05/2023