

NOTES:

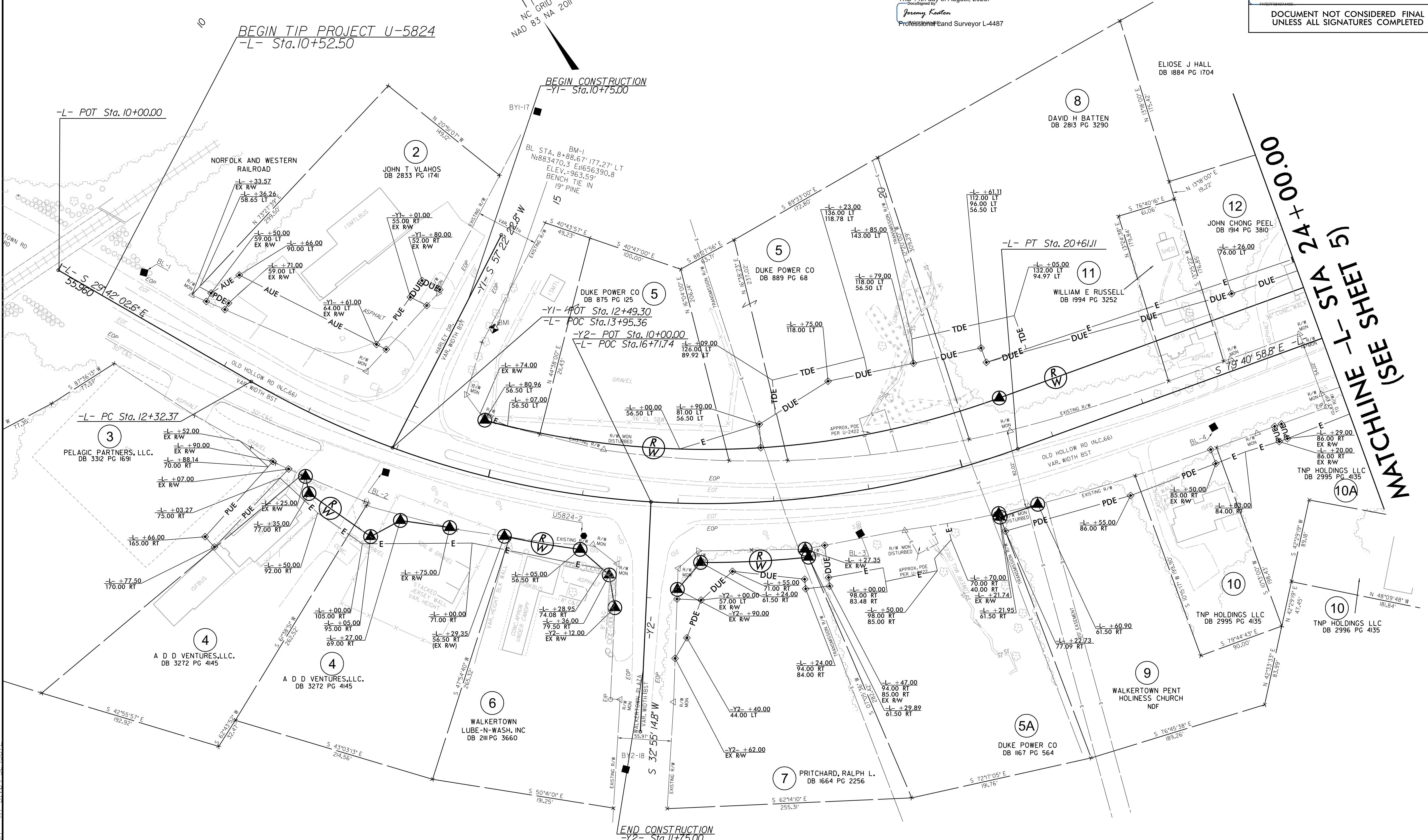
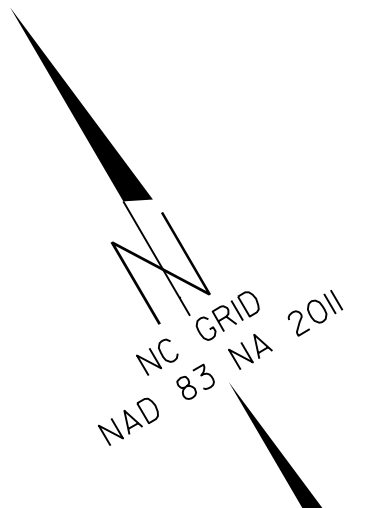
- IF FURTHER INFORMATION REGARDING PROJECT CONTROL IS NEEDED PLEASE CONTACT THE DIVISION 9 DDC UNIT.
- PROJECT CONTROL WAS ESTABLISHED USING GNSS, THE GLOBAL NAVIGATION SATELLITE SYSTEM.
- RIGHT OF WAY MONUMENTATION ESTABLISHED DECEMBER 2019 TO JULY 2023.

I, Jeremy L. Keaton, certify that the right of way and permanent easement monumentation for this project shown herein was completed under my direct and responsible charge from an actual survey made under my supervision; that all horizontal closures had a minimum ratio of precision of 1:10,000 (Class A). Field work was performed from December 2019 to July 2023, and all coordinates are based on NAD83/2011; That this survey was performed to meet the requirements of 21NCAC 56.1600 as applicable.

This 14th day of August, 2023.

DocuSigned by:
Jeremy Keaton
Professional Land Surveyor L-4487

L
PI Sta 16+75.18
Δ = 49° 58' 56.1" (LT)
D = 6' 01" 52.1"
L = 828.74'
T = 442.81'
R = 950.00'
SE = 4'
RO = 192'



16-AUG-2023 13:09
 S:\Projects\Development\IP-Projects\UNU-5824-NC66\Surveys\Control Sheets\U5824-ddc-rw04.dgn
 6/2/2019
 6/2/2019