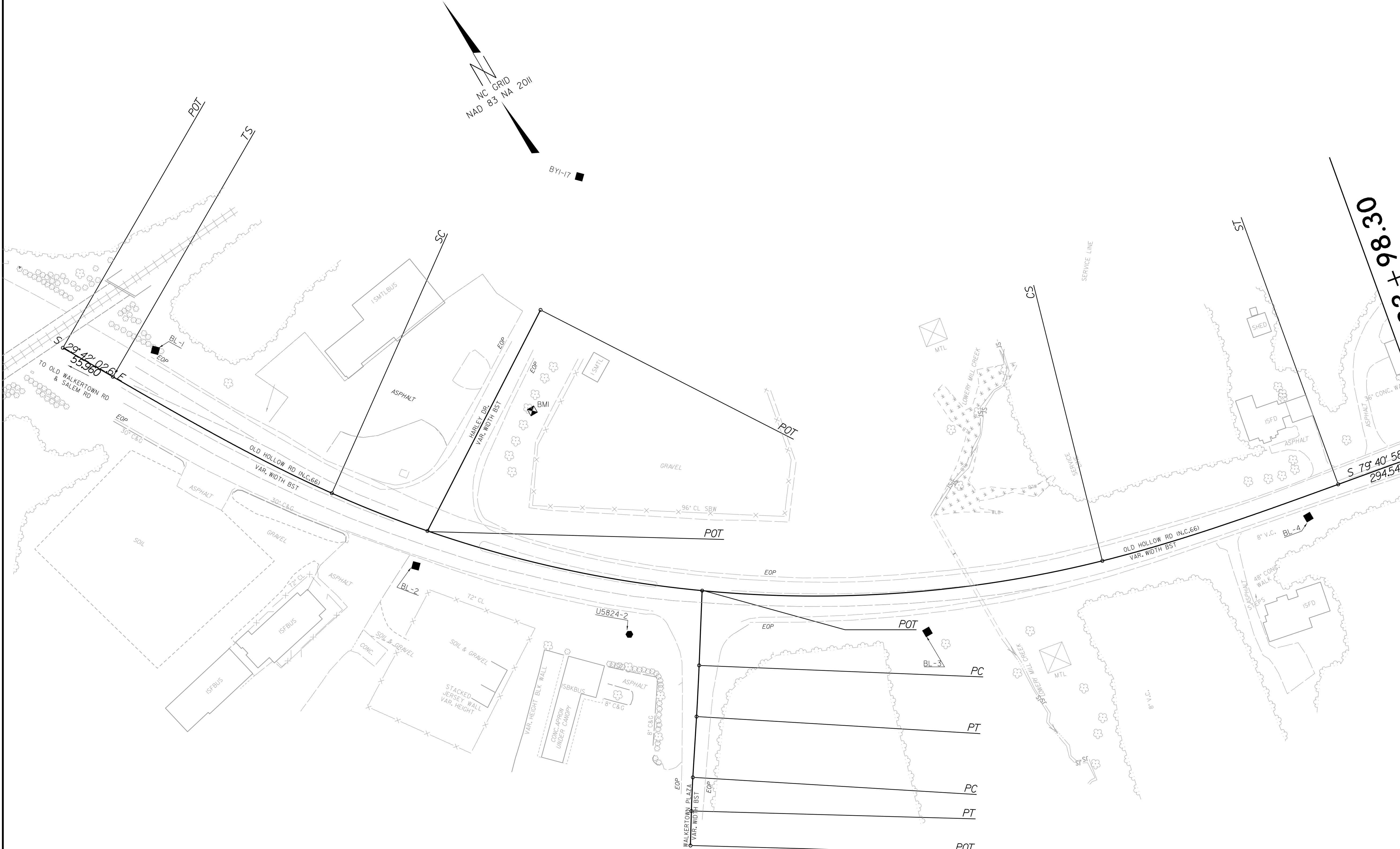


16-AUG-2023 13:08  
 S:\Projects\Development\IP\Projects\UNU-5824-NC666\Surveys\Control Sheets\U5824-ddc-rw02c-1.dgn  
 6/2/2019  
 U5824-2



- NOTES:**
1. PROJECT CONTROL WAS ESTABLISHED USING GNSS, THE GLOBAL NAVIGATION SATELLITE SYSTEM.
  2. THE SURVEY CONTROL DATA FOR THIS PROJECT HAS BEEN COMPILED FROM VARIOUS SOURCES. IF FURTHER INFORMATION REGARDING PROJECT CONTROL IS NEEDED, PLEASE CONTACT THE DIVISION 9 DDC UNIT.