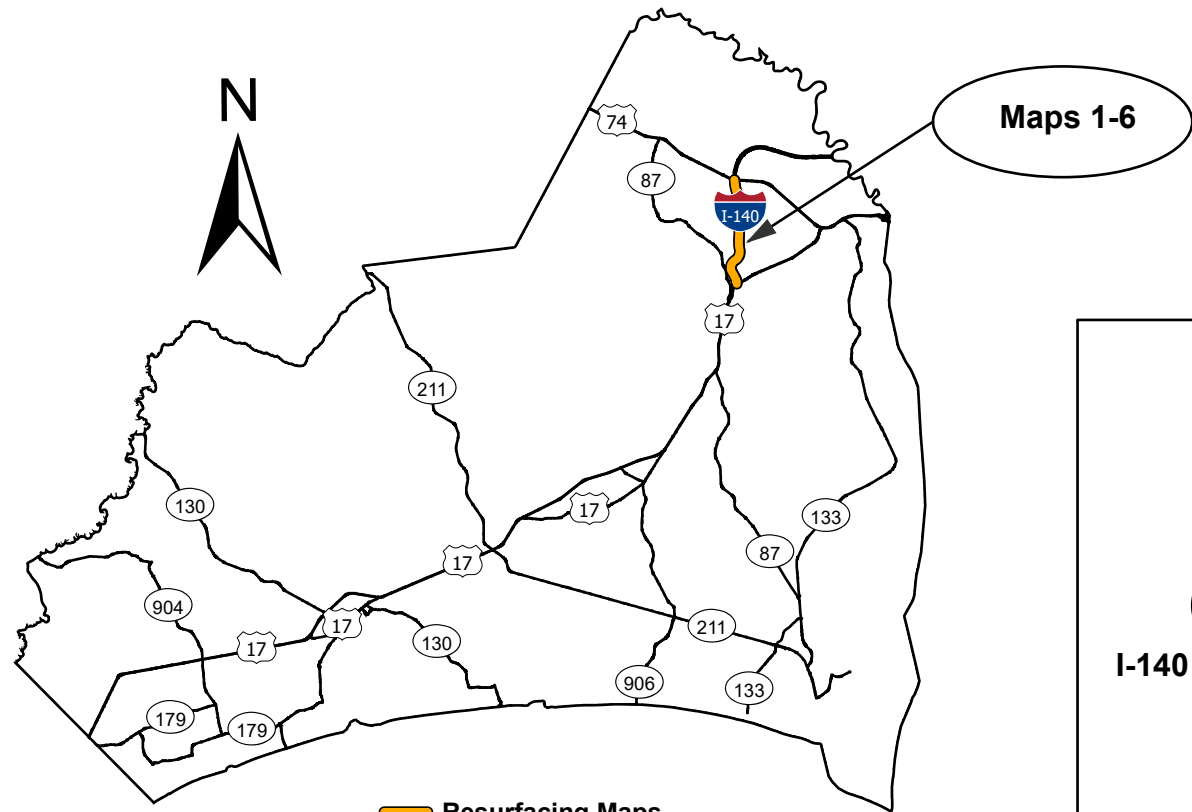
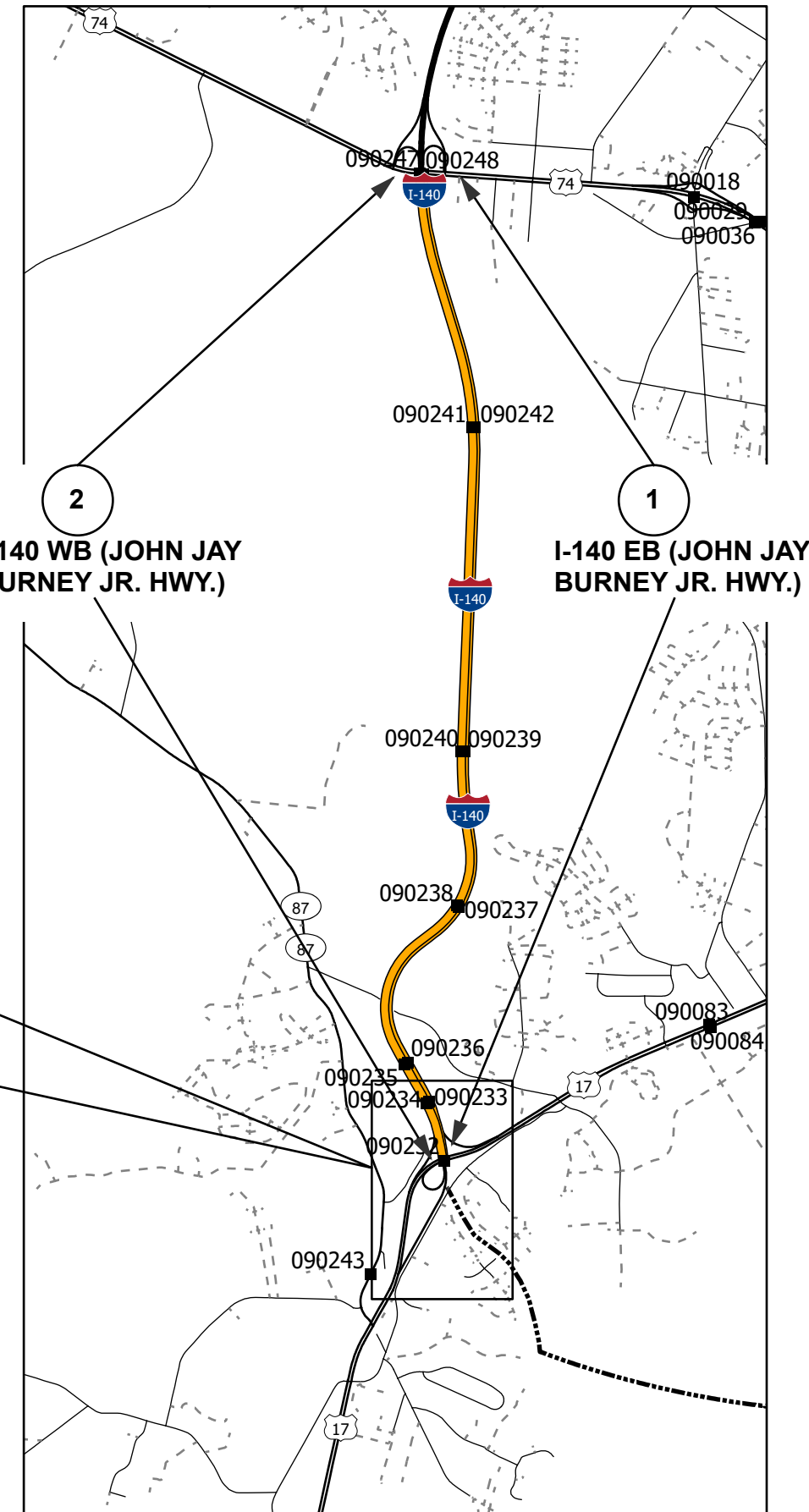
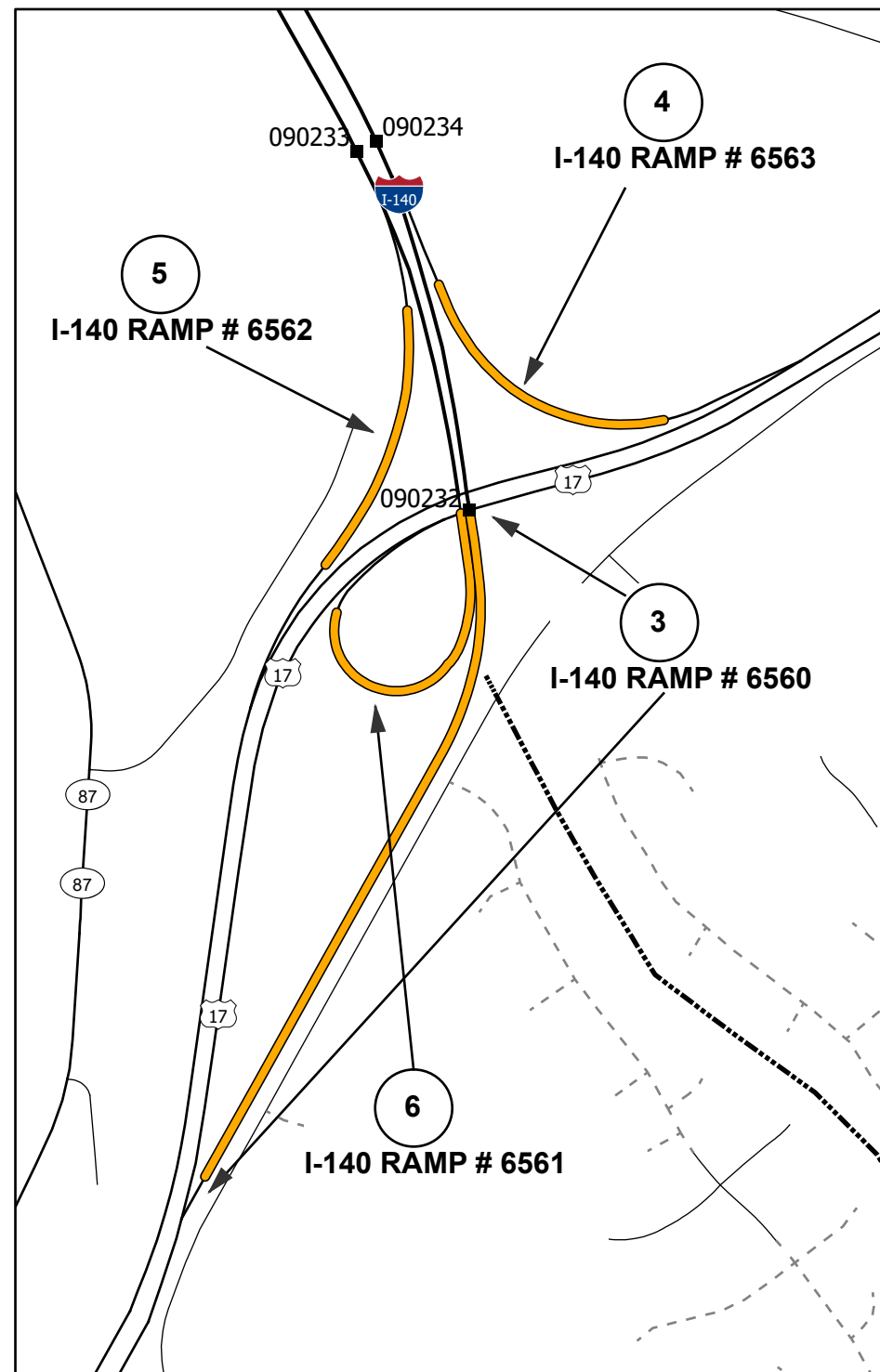


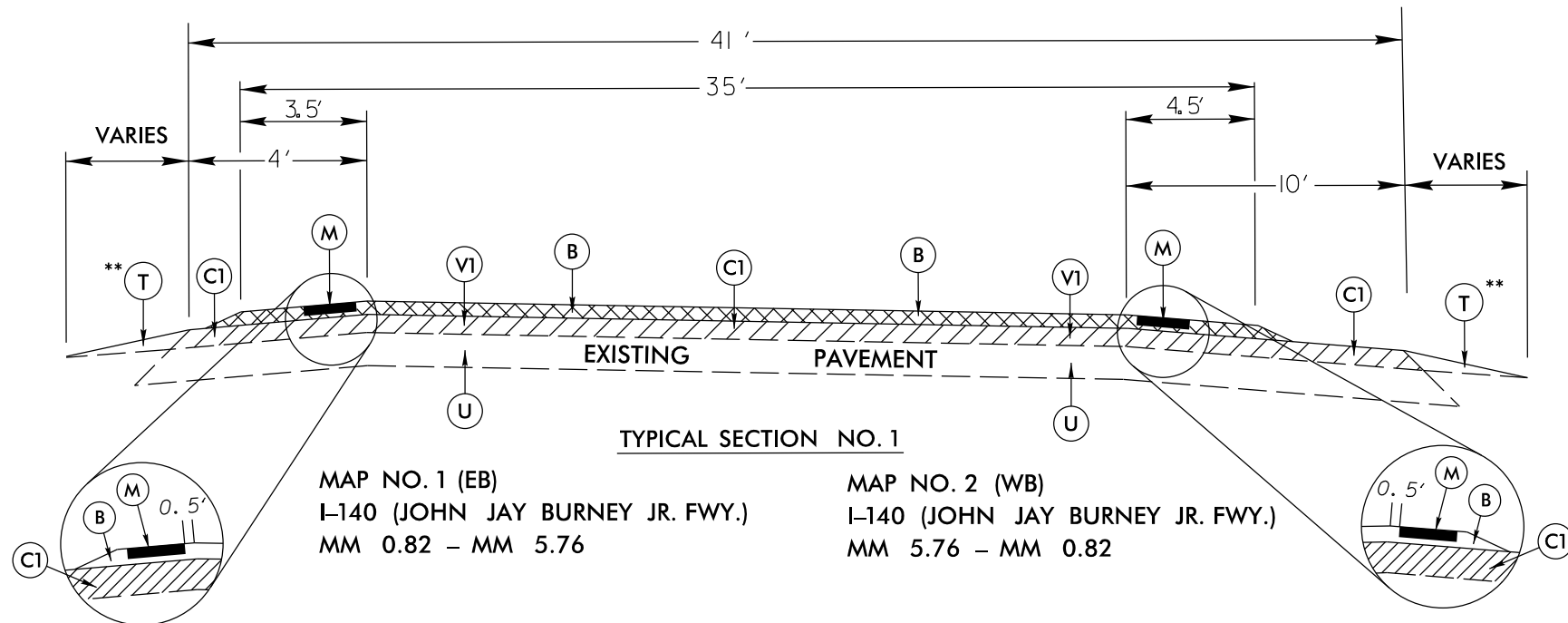
# I-6036: Brunswick I-140 Resurfacing

PROJECT REFERENCE NO.	SHEET NO.
I-6036	



- Resurfacing Maps
- Interstate
- US Route
- NC Route
- Secondary Route
- - -** Non-System
- Ramp
- - - -** Projected Route
- D3 Bridges





MAP NO. 1 (EB)  
I-140 (JOHN JAY BURNEY JR. FWY.)  
MM 0.82 - MM 5.76

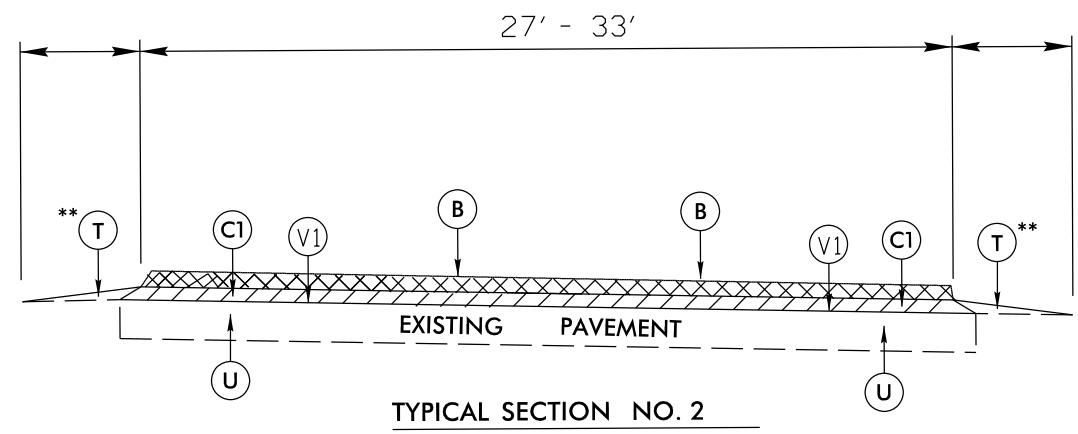
MAP NO. 2 (WB)  
I-140 (JOHN JAY BURNEY JR. FWY.)  
MM 5.76 - MM 0.82

PAVEMENT SCHEDULE	
B	PROP. APPROX. 3/4" OPEN-GRADED ASPHALT FRICTION COURSE, TYPE FC-1 MODIFIED, AT AN AVERAGE RATE OF 90 LBS. PER SQ.YD.
C1	PROP. APPROX. 3" ASPHALT CONCRETE SURFACE COURSE, TYPE S9.5D, AT AN AVERAGE RATE OF 168 LBS. PER SQ.YD. IN EACH OF TWO LAYERS
M	MILLED RUMBLE STRIP
T	AGGREGATE SHOULDER BORROW (ASB) SHOULDER RECONSTRUCTION
U	EXISTING PAVEMENT
V1	MILLING ASPHALT PAVEMENT, 3" DEPTH

PAVEMENT EDGE SLOPES ARE 1:1, EXCEPT FINAL SURFACE COURSE. SEE SHOULDER WEDGE DETAIL.

NOTES: MILL A SINGLE LANE AND PAVE BACK BY THE END OF EACH WORK DAY

\*\* SHOULDER WORK ON MAP NO. 1 - 6 AS NEEDED, TO BE DETERMINED BY ENGINEER.

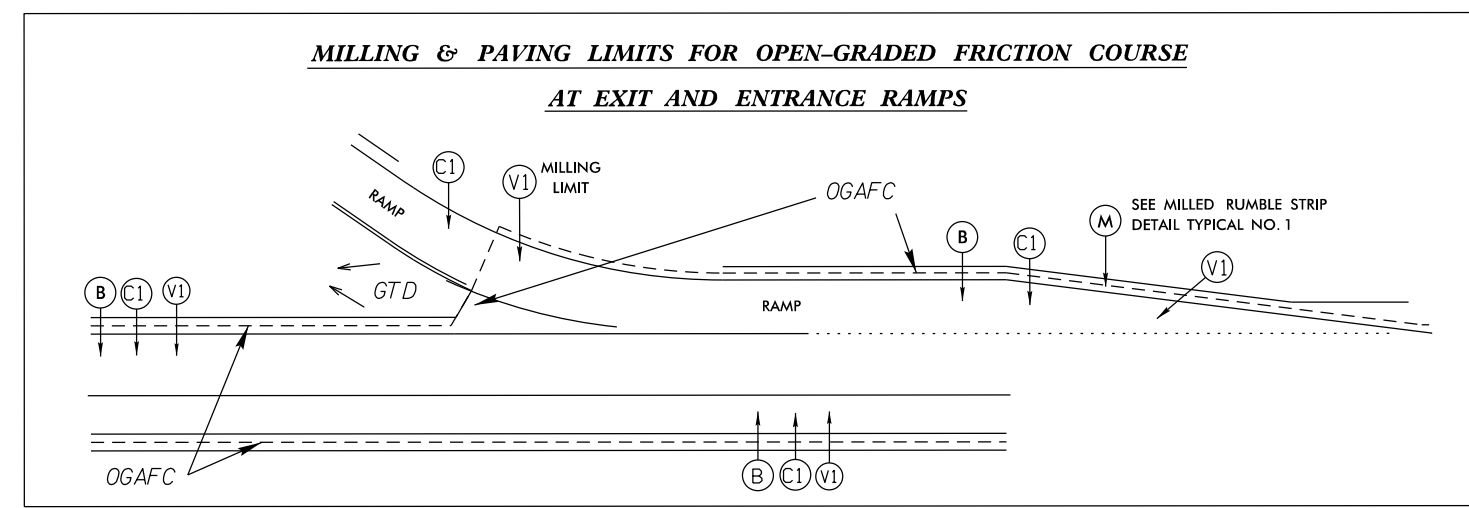


MAP NO. 3  
I-140 EB ENTRANCE RAMP #6560  
MP 0.04 - MP 0.60

MAP NO. 5  
I-140 WB EXIT RAMP #6562  
MP 0.09 - MP 0.30

MAP NO. 4  
I-140 EB ENTRANCE RAMP #6563  
MP 0.11 - MP 0.33

MAP NO. 6  
I-140 WB EXIT RAMP #6561  
MP 0.00 - MP 0.24



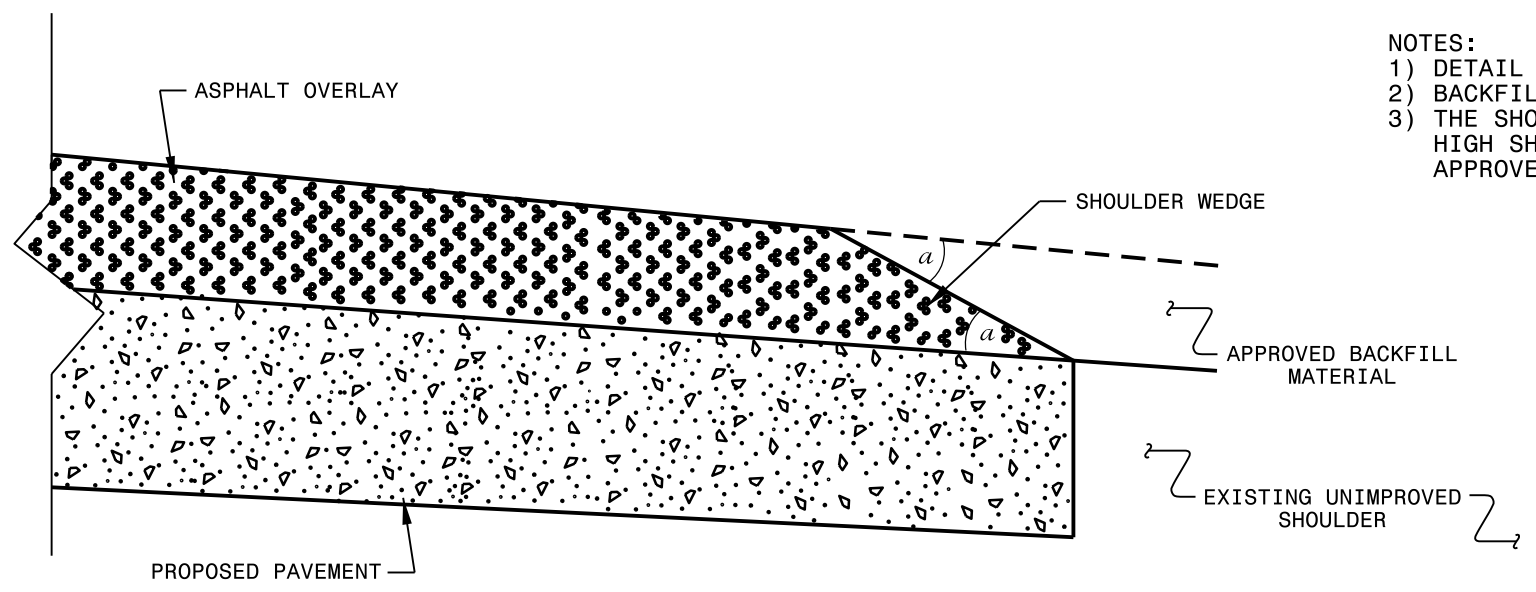
FOR USE WITH TYPICALS I & 2

2018 ROADWAY ENGLISH STANDARD DRAWINGS	EFF.01-16-2018 REV.
The following Roadway Standards as appear in "Roadway Standard Drawings" Highway Design Branch - N.C. Department of Transportation - Raleigh, N.C., Dated January, 2018 are applicable to this project and by reference hereby are considered a part of these plans:	
STD.NO.	TITLE
DIVISION 6 - ASPHALT BASES AND PAVEMENTS	
665.01	Asphalt Shoulders - Milled Rumble Strips
DIVISION 8 - INCIDENTALS	
862.01	Guardrail Placement
862.02	Guardrail Installation
DIVISION 11 - WORK ZONE TRAFFIC CONTROL	
1101.02	Temporary Lane Closures (Sheet 9 & 10 of 15)

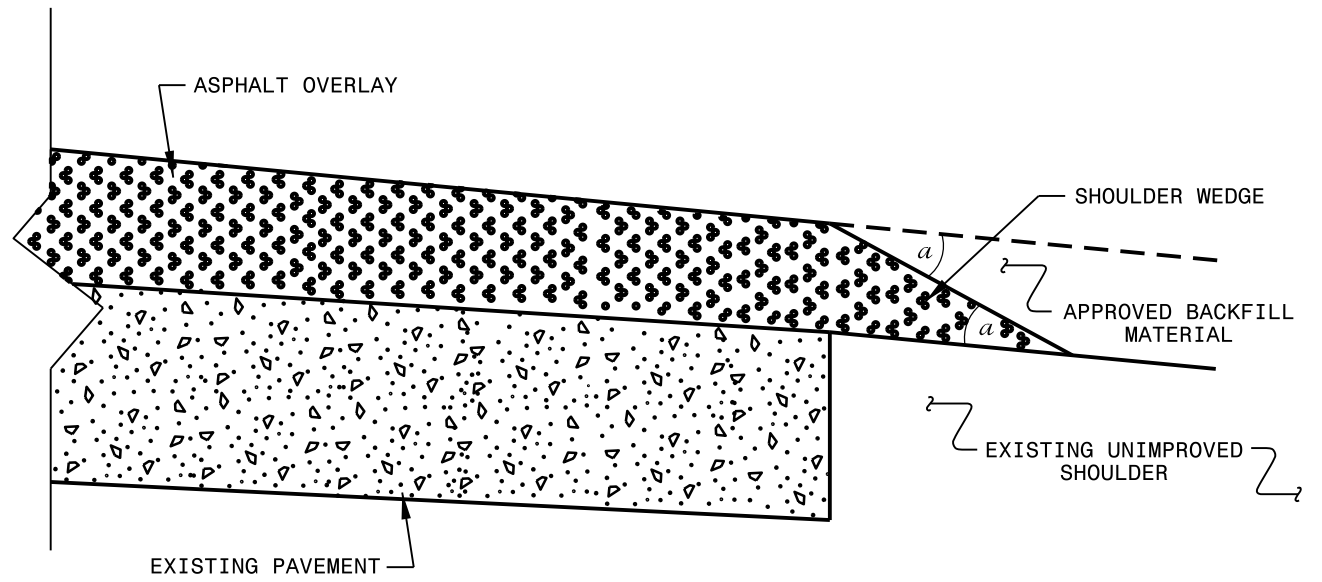
8/17/99

SECTION 800 - PAVEMENTS  
SUBSECTION 800.01 - ASPHALT PAVEMENTS  
SECTION 800.01 - ASPHALT PAVEMENTS  
SECTION 800.01 - ASPHALT PAVEMENTS

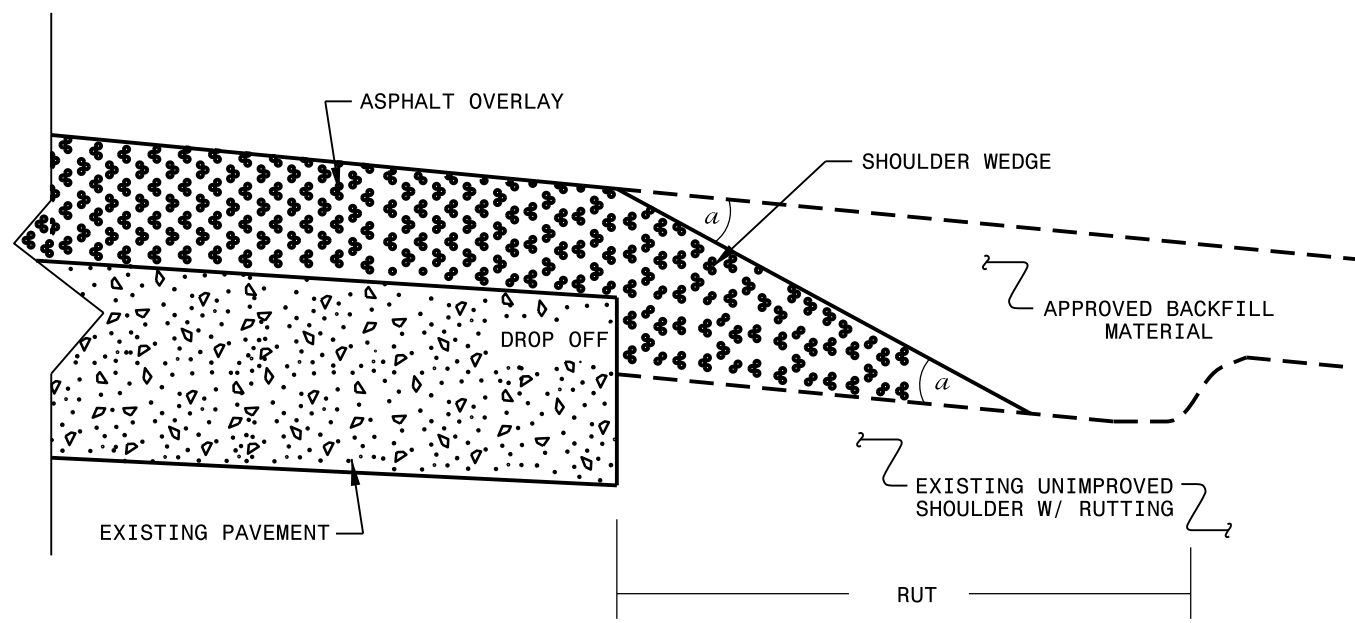
- NOTES:
- 1) DETAIL DOES NOT APPLY TO OGAFD AND ULTRA-THIN BONDED WEARING COURSE.
  - 2) BACKFILL SHOULDER WITH APPROVED MATERIAL.
  - 3) THE SHOULDER WEDGE DEVICE MAY BE DISENGAGED AT PAVED DRIVEWAYS, SIDE STREETS, HIGH SHOULDERS, AND OTHER LOCATIONS NOT FEASIBLE TO CONSTRUCT AS APPROVED BY THE ENGINEER.



**SHOULDER WEDGE DETAIL**  
(Resurfacing Projects w/ Widening or with Existing Paved Shoulder having no dropoffs)



**SHOULDER WEDGE DETAIL**  
(Resurfacing Projects w/ NO Widening)



**SHOULDER WEDGE DETAIL**  
(Resurfacing Adjacent to Rutted Shoulder)

- SHOULDER WEDGE ANGLE = 30°

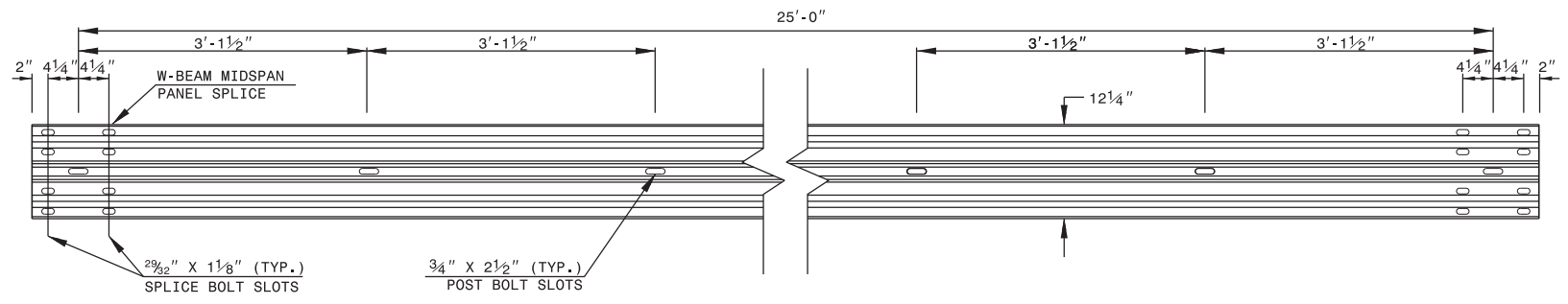
<b>CONTRACT STANDARDS AND DEVELOPMENT UNIT</b>			
Office 919-707-6950		FAX 919-250-4119	
<b>SHOULDER WEDGE DETAILS</b>			
ORIGINAL BY: T.SPELL	DATE: 7-19-11		
MODIFIED BY:	DATE: 2/2/16		
CHECKED BY:	DATE:		
FILE SPEC.: s:\usr\details\stand\shoulderwedgedetail.dgn			

27 JUN 2018 13:22 s:\projects\Resurfacing Projects\Division 3\Sampson August 2018\Revised Shoulder Wedge Detail.dgn  
 P:\porter\A1\CS0\20180625

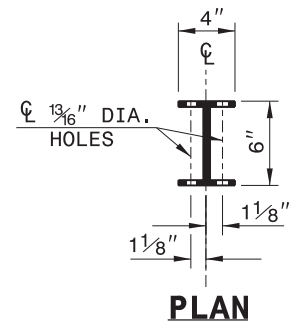
STATE OF NORTH CAROLINA  
DEPT. OF TRANSPORTATION  
DIVISION OF HIGHWAYS  
RALEIGH, N.C.

ROADWAY DETAIL DRAWING FOR  
**GUARDRAIL INSTALLATION**

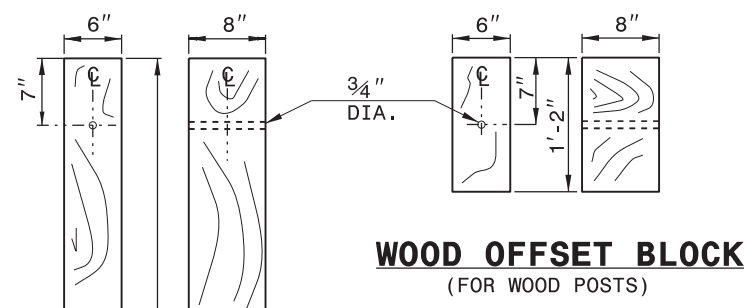
SHEET 6 OF 8  
**862D02**



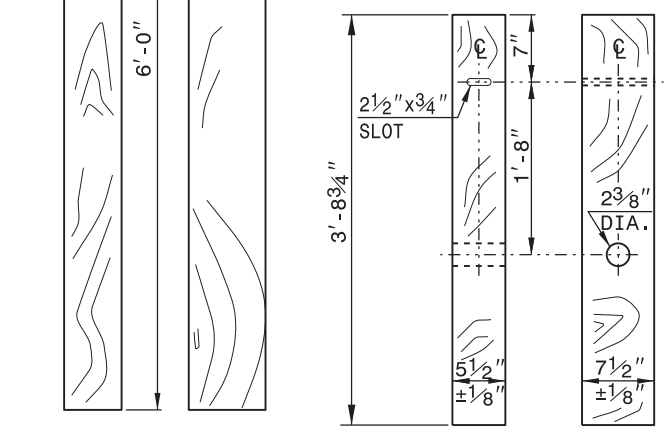
**STANDARD W-BEAM GUARDRAIL**



**PLAN**

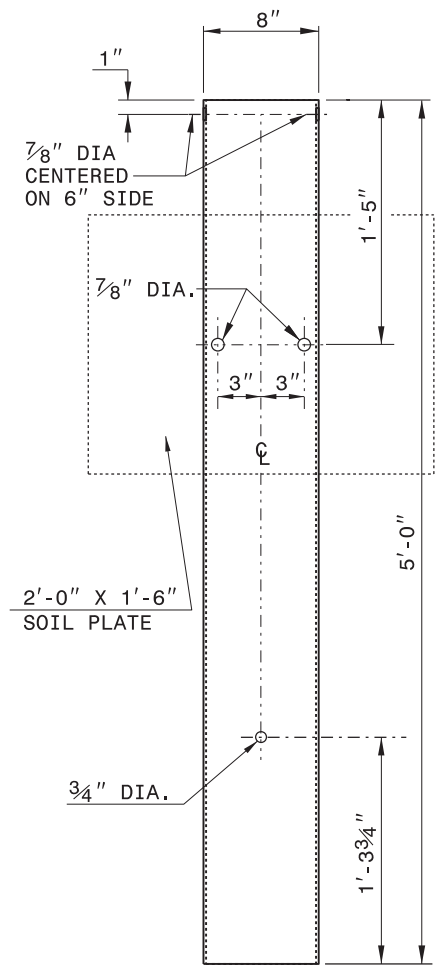


**WOOD OFFSET BLOCK  
(FOR WOOD POSTS)**

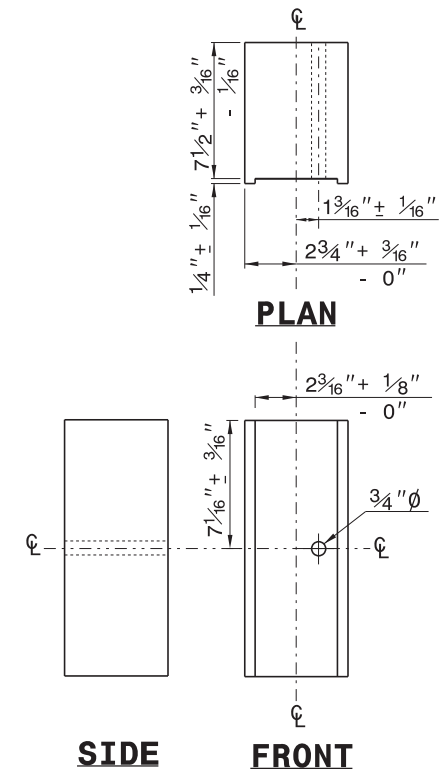


**STANDARD  
LINE POST**

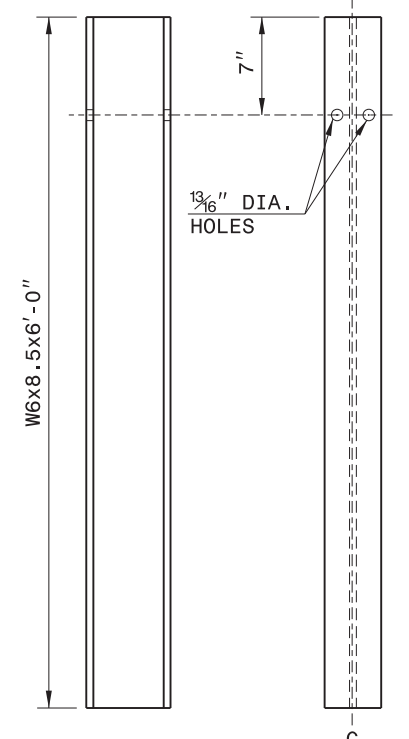
**SHORT WOOD  
BREAKAWAY POST**



**STEEL TUBE  
TS 6"x8"x0.1875"**



**ROUTED  
OFFSET BLOCK**



**"W6" STEEL POST**

**SYSTEM PARTS**

STATE OF NORTH CAROLINA  
DEPT. OF TRANSPORTATION  
DIVISION OF HIGHWAYS  
RALEIGH, N.C.

ROADWAY DETAIL DRAWING FOR  
**GUARDRAIL INSTALLATION**

SHEET 6 OF 8  
**862D02**



DocuSigned by:  
*Nicole M. Hackler*  
10/16/2023  
5884323D34164C5...

**CONTRACTS STANDARDS  
AND DEVELOPMENT UNIT**  
Office 919-707-6950 FAX 919-250-4119

**SEE TITLE BLOCK**

ORIGINAL BY: J. HOWERTON	DATE: 3-7-2018
MODIFIED BY:	DATE:
CHECKED BY:	DATE:
FILE SPEC.:	



PROJECT NO.	SHEET NO.
I-6036	6

### THERMOPLASTIC AND PAINT QUANTITIES

PROJECT NO	COUNTY	MAP NO	ROUTE	DESCRIPTION	TYP NO	LANES	LANE TYPE	LENGTH	WIDTH	4400000000-E	4415000000-N	4420000000-N	4423000000-N	4434000000-N	4480000000-N	4510000000-N	4688000000-E			4700000000-E	4725000000-E	4770000000-E	4815000000-E			4825000000-E	4855000000-E	4905100000-N	4900000000-N
										WORK ZONE SIGNS (STATIONARY)	FLASHING ARROW BOARD	PORTABLE CHANGEABLE MESSAGE SIGN	WORK ZONE DIGITAL SPEED LIMIT SIGNS	SEQUENTIAL FLASHING WARNING LIGHTS	TMA	LAW ENFORCEMENT	6" X 90 M YELLOW THERMO	6" X 90 M WHITE THERMO	12" X 90 M WHITE THERMO	MERGE ARROW 90 M	COLD APPLIED PLASTIC PAVEMENT MARKING LINES, TYPE II (6")	6" WHITE PAINT	6" YELLOW PAINT	12" WHITE PAINT	REMOVAL OF PAVEMENT MARKING LINES (6")	NON CAST IRON SNOW PLOWABLE MARKERS (C/R)	PERMANENT RAISED PAVEMENT MARKERS (C/R)		
								MI	FT	SF	EA	EA	EA	EA	EA	HR	LF	LF	LF	EA	LF	LF	LF	LF	LF	LF	EA	EA	
47985.3.1	Brunswick	1	I-140 EB (JOHN JAY BURNEY JR. HWY.)	FROM US 17 (OCEAN HWY E.) TO US 74 / 76 (ANDREW JACKSON HWY.) [MP 0.82 TO MM 5.76]	1	2	2WD	4.94	41	156	2	4	6		1	710	26,083	33,087	1,106	3	450.00	33,087	26,083	1,106	450	341	30		
<b>TOTAL FOR MAP NO. 1</b>							<b>4.94</b>			<b>156</b>	<b>2</b>	<b>4</b>	<b>6</b>		<b>1</b>	<b>710</b>	<b>26,083</b>	<b>33,087</b>	<b>1,106</b>	<b>3</b>	<b>450.00</b>	<b>33,087</b>	<b>26,083</b>	<b>1,106</b>	<b>450</b>	<b>341</b>	<b>30</b>		
47985.3.1	Brunswick	2	I-140 WB (JOHN JAY BURNEY JR. HWY.)	FROM US 74 / 76 (ANDREW JACKSON HWY.) TO US 17 (OCEAN HWY E.) [MP 0.82 TO MP 5.76]	1	2	2WD	4.94	41	156	2	4	6		1	710	26,083	32,606	250	3	450.00	32,606	26,083	250	450	341	25		
<b>TOTAL FOR MAP NO. 2</b>							<b>4.94</b>			<b>156</b>	<b>2</b>	<b>4</b>	<b>6</b>		<b>1</b>	<b>710</b>	<b>26,083</b>	<b>32,606</b>	<b>250</b>	<b>3</b>	<b>450</b>	<b>32,606</b>	<b>26,083</b>	<b>250</b>	<b>450</b>	<b>341</b>	<b>25</b>		
47985.3.1	Brunswick	3	I-140 RAMP # 6560	FROM GORE AT US 17 (OCEAN HWY. E.) TO OVERPASS AT I-140 [MP 0.04 TO MP 0.60]	2	2		0.56	33	38	1			7	1	20	2,957	3,697								40			
<b>TOTAL FOR MAP NO. 3</b>							<b>0.56</b>			<b>38</b>	<b>1</b>			<b>7</b>	<b>1</b>	<b>20</b>	<b>2,957</b>	<b>3,697</b>								<b>40</b>			
47985.3.1	Brunswick	4	I-140 RAMP # 6563	FROM GORE AT US 17 (OCEAN HWY. E.) TO GORE AT I-140 [MP 0.11 TO MP 0.33]	2	1		0.22	28	38	1			7	1	20	1,162	1,162											
<b>TOTAL FOR MAP NO. 4</b>							<b>0.22</b>			<b>38</b>	<b>1</b>			<b>7</b>	<b>1</b>	<b>20</b>	<b>1,162</b>	<b>1,162</b>											
47985.3.1	Brunswick	5	I-140 RAMP # 6562	FROM GORE AT I-140 TO GORE AT US 17 (OCEAN HWY. E.) [MP 0.09 TO MP 0.30]	2	2		0.21	33	38	1			7	1	20	990	1,238								20			
<b>TOTAL FOR MAP NO. 5</b>							<b>0.21</b>			<b>38</b>	<b>1</b>			<b>7</b>	<b>1</b>	<b>20</b>	<b>990</b>	<b>1,238</b>								<b>20</b>			
47985.3.1	Brunswick	6	I-140 RAMP # 6561	FROM OVERPASS AT I-140 TO GORE AT US 17 (OCEAN HWY. E.) [MP 0.00 TO MP 0.24]	2	1		0.24	27	38	1			7	1	20	1,267									1,267			
<b>TOTAL FOR MAP NO. 6</b>							<b>0.24</b>			<b>38</b>	<b>1</b>			<b>7</b>	<b>1</b>	<b>20</b>	<b>1,267</b>									<b>1,267</b>			
<b>TOTAL FOR PROJ NO. 47985.3.1</b>							<b>11.11</b>			<b>464</b>	<b>8</b>	<b>8</b>	<b>12</b>	<b>28</b>	<b>6</b>	<b>1,500</b>	<b>58,542</b>	<b>71,790</b>	<b>1,356</b>	<b>6</b>	<b>900</b>	<b>71,790</b>	<b>58,542</b>	<b>1,356</b>	<b>900</b>	<b>742</b>	<b>55</b>		
<b>GRAND TOTAL</b>							<b>11.11</b>			<b>464</b>	<b>8</b>	<b>8</b>	<b>12</b>	<b>28</b>	<b>6</b>	<b>1,500</b>	<b>58,542</b>	<b>71,790</b>	<b>1,356</b>	<b>6</b>	<b>900</b>	<b>71,790</b>	<b>58,542</b>	<b>1,356</b>	<b>900</b>	<b>742</b>	<b>55</b>		