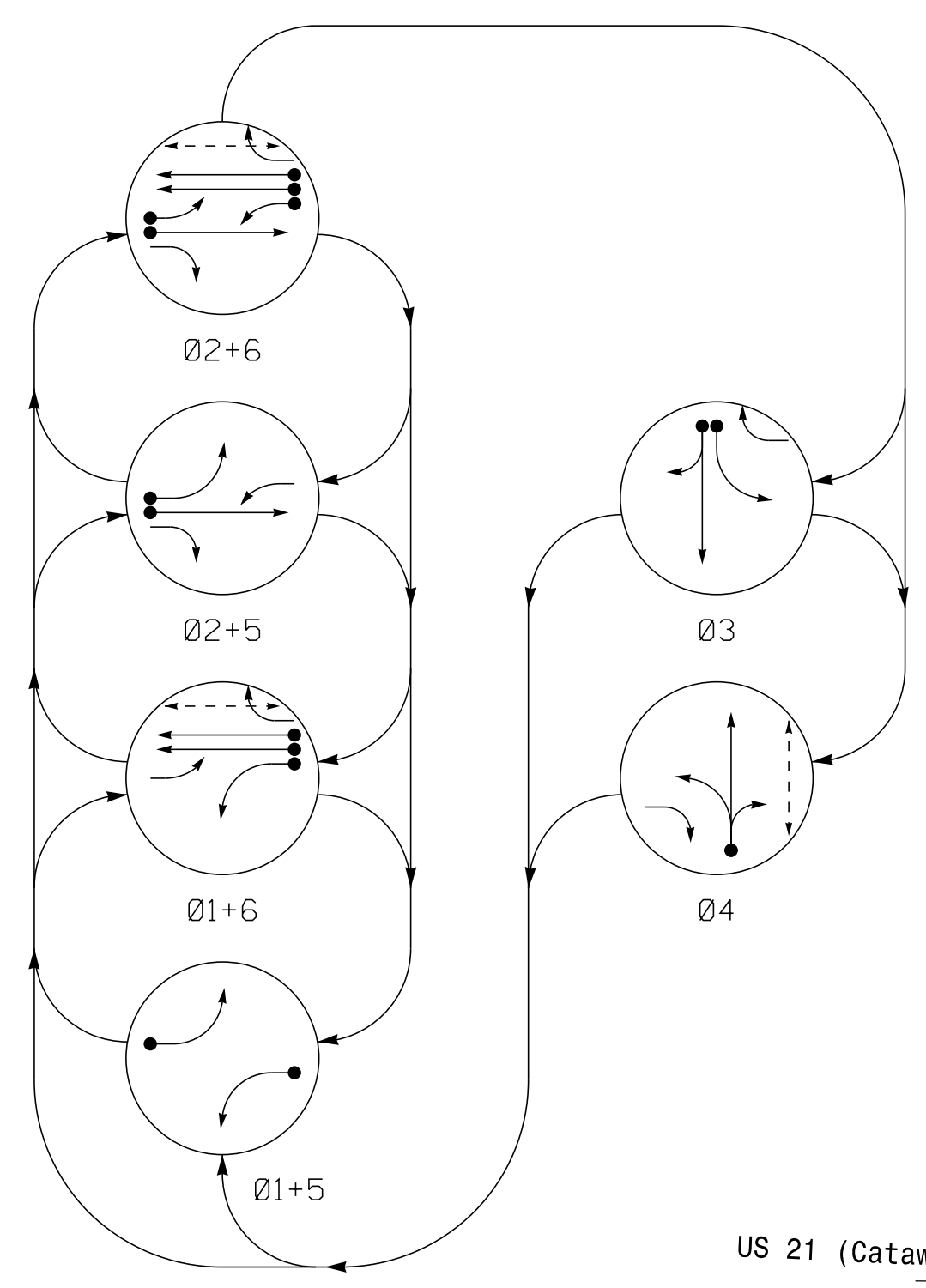
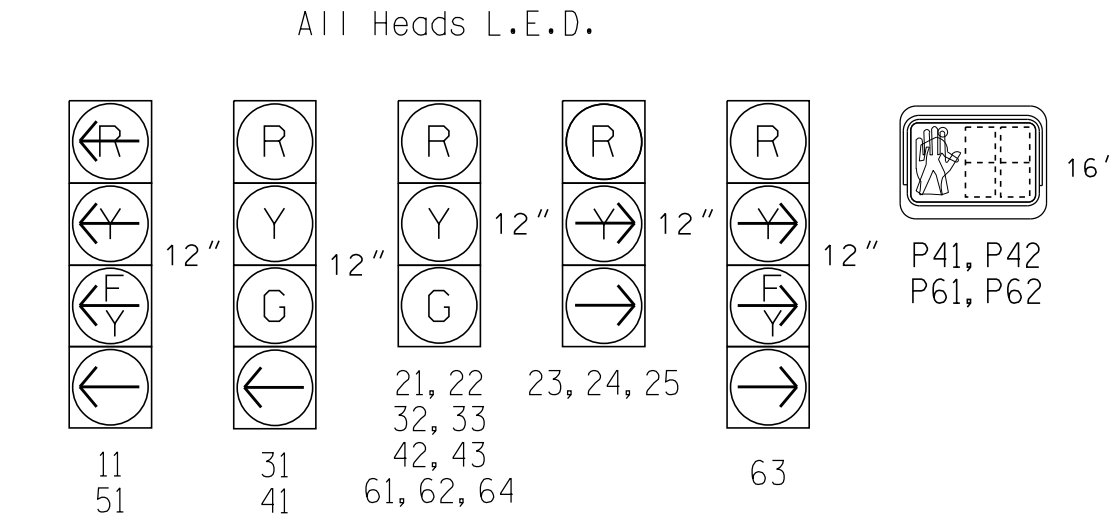


PHASING DIAGRAM



SIGNAL FACE	PHASE					
	01+5	02+6	03	04	FLASH	
11	←	←	←	←	←	←
21, 22	R	R	G	R	R	Y
23, 24, 25	R	R	←	←	←	←
31	R	R	R	G	R	R
32, 33	R	R	R	G	R	R
41	←	←	←	←	G	R
42, 43	R	R	R	R	G	R
51	←	←	←	←	←	←
61, 62, 64	R	G	R	G	R	Y
63	R	←	←	←	R	←
P41, P42	DW	DW	DW	DW	W	DRK
P61, P62	DW	W	DW	DW	DW	DRK

SIGNAL FACE I.D.



ASC/3 DETECTOR INSTALLATION CHART											
DETECTOR				PROGRAMMING							
LOOP	SIZE (FT)	DISTANCE FROM STOPBAR (FT)	TURNS	NEW LOOP	PHASE	CALLING	EXTEND TIME	DELAY TIME	USE ADDED INITIAL	TYPE	SYSTEM LOOP
1A	6X40	0	*	*	1	YES	-	15	-	N	-
2A	6X6	70	*	*	2	YES	-	-	-	N	-
3A	6X40	0	*	*	3	YES	-	3	-	N	-
3B	6X40	0	*	*	3	YES	-	10	-	N	-
4A	6X40	0	*	*	4	YES	-	10	-	N	-
4B	6X40	0	*	*	4	YES	-	-	-	N	-
5A	6X40	0	*	*	5	YES	-	15	-	N	-
6A, 6B	6X6	70	*	*	2	YES	-	-	-	N	-

* Denotes Video Detection

3 Phase Fully Actuated Cornelius CLS D10-18

NOTES

- Refer to "Roadway Standard Drawings NCDOT" dated January 2018 and "Standard Specifications for Roads and Structures" dated January 2018, and all applicable sections of the latest version of the generic Project Special Provisions.
- Do not program signal for late night flashing operation unless otherwise directed by the Engineer.
- Reposition existing signal for late night flashing operation unless otherwise directed by the Engineer.
- Rename existing signal head 44 to 42 and reposition.
- Remove portable pedestrian signals P21 and P22.
- Set all detector units to presence mode.
- All pedestrian signal equipment shall be placed on portable bases to allow for relocation as required by Division 10 traffic engineer.
- Pedestrian head and pushbutton signal cables shall be directly attached to overhead spanwire.
- Pedestrian pedestal locations to be determined by Division 10 traffic engineer.
- Omit "WALK" and flashing "DON'T WALK" with no pedestrian calls.
- Program pedestrian heads to countdown the flashing "Don't Walk" time only.
- Program controller to allow an Advanced Walk movement before serving the vehicle phase.
- This intersection uses video detection. Install detectors according to the manufacturer's instructions to achieve the desired detection.
- See C-5621 TMP Phase 2 for pavement markings and pedestrian detour routing.
- Portions of crosswalk masked for clarity.
- Maximum times shown in timing chart are for free-run operation only. Coordinated signal system timing values supersede these values.

LEGEND

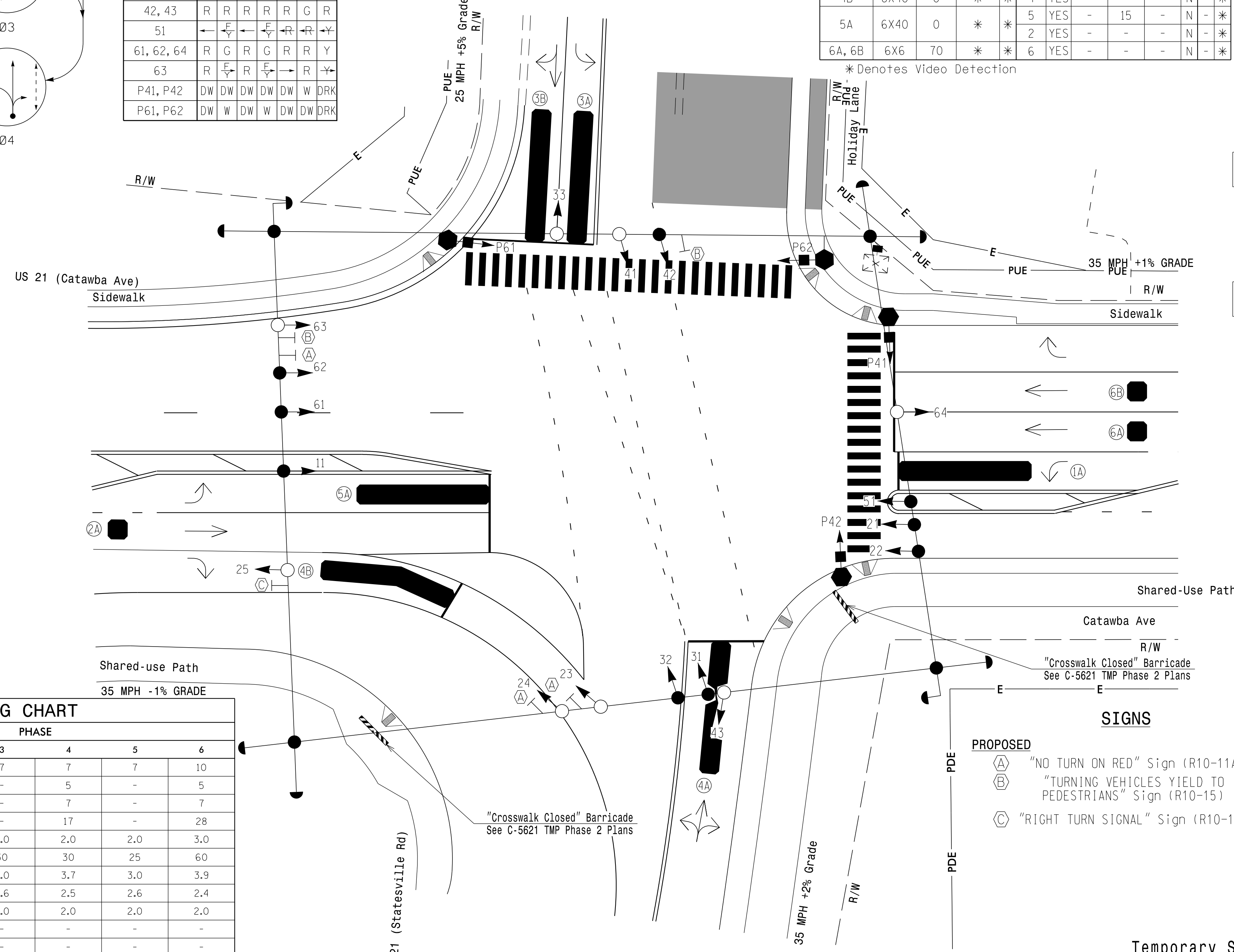
PROPOSED	EXISTING
	N/A
	N/A
	N/A
	N/A
	N/A

PHASING DIAGRAM DETECTION LEGEND

- DETECTED MOVEMENT
- UNDETECTED MOVEMENT (OVERLAP)
- UNSIGNALIZED MOVEMENT
- PEDESTRIAN MOVEMENT

FEATURE	PHASE					
	1	2	3	4	5	6
Min Green *	7	10	7	7	7	10
Delayed Green	-	-	-	5	-	5
Walk *	-	-	-	7	-	7
Ped Clear	-	-	-	17	-	28
Veh. Extension *	2.0	3.0	2.0	2.0	2.0	3.0
Max I *	25	60	30	30	25	60
Yellow	3.0	3.9	3.0	3.7	3.0	3.9
Red Clear	3.1	2.4	3.6	2.5	2.6	2.4
Red Revert	2.0	2.0	2.0	2.0	2.0	2.0
Actuations B4 Add *	-	-	-	-	-	-
Seconds /Actuation *	-	-	-	-	-	-
Max Initial *	-	-	-	-	-	-
Time Before Reduction *	-	-	-	-	-	-
Time To Reduce *	-	-	-	-	-	-
Minimum Gap	-	-	-	-	-	-
Locking Detector	-	X	-	-	-	X
Recall Position	-	VEH. RECALL	-	-	-	VEH. RECALL
Dual Entry	-	-	-	-	-	-
Simultaneous Gap	X	X	X	X	X	X

* These values may be field adjusted. Do not adjust Min Green and Extension times for phases 2 and 6 lower than what is shown. Min Green for all other phases should not be lower than 4 seconds.



SIGNS

PROPOSED	EXISTING
"NO TURN ON RED" Sign (R10-11A)	
"TURNING VEHICLES YIELD TO PEDESTRIANS" Sign (R10-15)	
"RIGHT TURN SIGNAL" Sign (R10-10R)	

This plan supersedes the signal plan signed and sealed by S. Nick Matthews, PE on 05/31/2022.

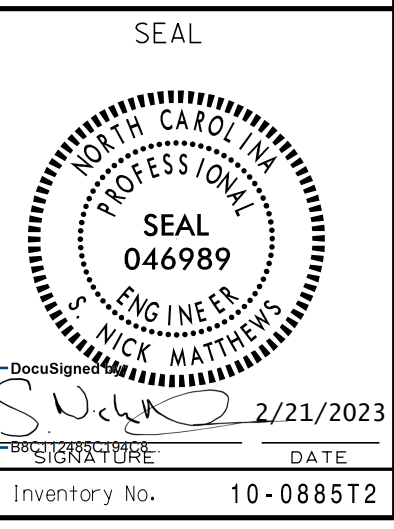


Temporary Signal 2 - TCP Phase 2

Prepared For the Offices of:

 US 21 (Catawba Avenue) / Catawba Avenue at US 21 (Statesville Road) / Holiday Lane
 Division 10 Mecklenburg County Cornelius
 PLAN DATE: February 2023 REVIEWED BY: S.G. Haynie
 PREPARED BY: S.N. Matthews REVIEWED BY: _____
 REVISIONS: _____ INIT. DATE: _____
 SCALE: 1" = 20'
 DATE: 2/21/2023
 Sig Inventory No. 10-088512

DOCUMENT NOT CONSIDERED FINAL UNLESS ALL SIGNATURES COMPLETED



21-Feb-23 13:36:22
R:\Projects\CMS\gms\gms1\088512_sig_dsm-20230221.dgn
13:36:22