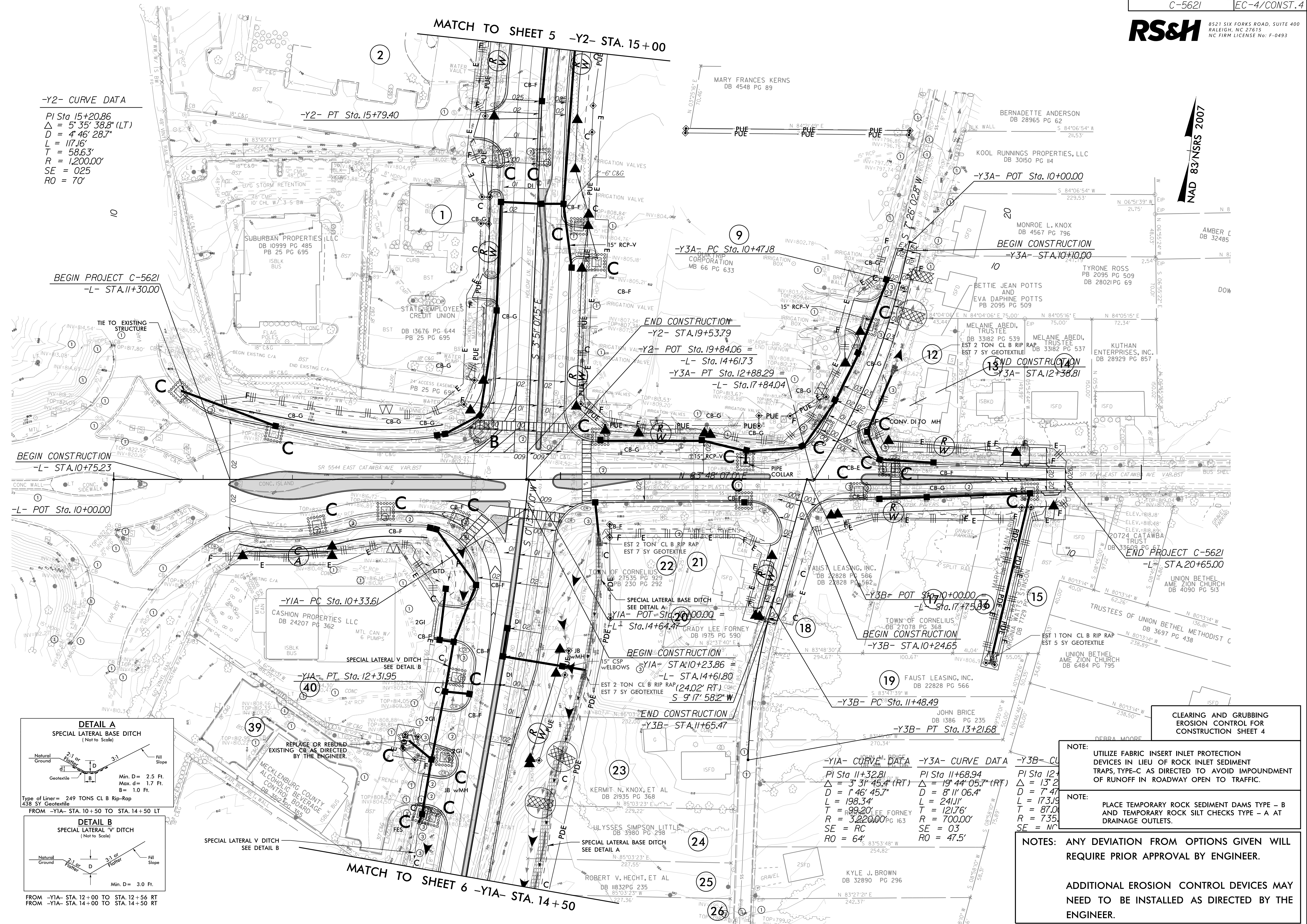
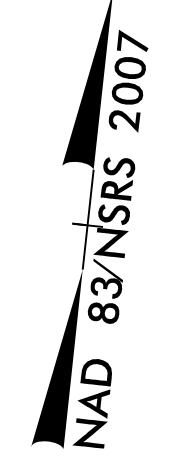


**-Y2- CURVE DATA**  
 PI Sta 15+20.86  
 $\Delta = 5^{\circ} 35' 38.8" (LT)$   
 $D = 4^{\circ} 46' 28.7"$   
 $L = 117.16'$   
 $T = 58.63'$   
 $R = 1,200.00'$   
 $SE = 0.25$   
 $RO = 70'$



BEGIN CONSTRUCTION  
 -L- STA.10+75.23

-L- POT Sta.10+00.00

-Y1A- PC Sta.10+33.61

-Y1A- PT Sta.12+31.95

END CONSTRUCTION  
 -Y2- STA.19+53.79

-Y3A- PT Sta.12+88.29 =  
 -L- Sta.17+84.04

-Y3B- POT Sta.10+00.00  
 -L- Sta.17+53.86

BEGIN CONSTRUCTION  
 -Y3B- STA.10+24.65

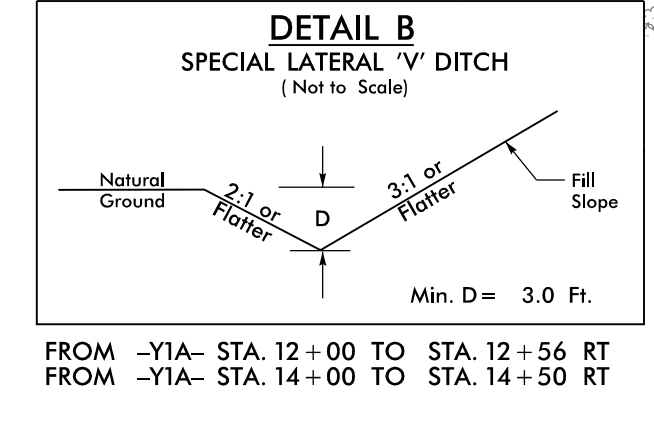
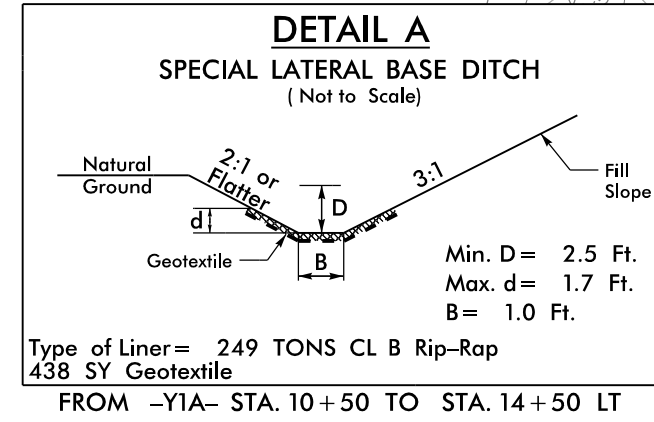
-Y3B- PC Sta.11+48.49

-Y3B- PT Sta.13+21.68

**-Y1A- CURVE DATA**  
 PI Sta 11+32.81  
 $\Delta = 3^{\circ} 31' 45.4" (RT)$   
 $D = 1^{\circ} 46' 45.7"$   
 $L = 198.34'$   
 $T = 99.20'$   
 $R = 700.00'$   
 $SE = RC$   
 $RO = 64'$

**-Y3A- CURVE DATA**  
 PI Sta 11+68.94  
 $\Delta = 19^{\circ} 44' 05.7" (RT)$   
 $D = 8^{\circ} 11' 06.4"$   
 $L = 241.11'$   
 $T = 121.76'$   
 $R = 700.00'$   
 $SE = 03$   
 $RO = 47.5'$

**-Y3B- CURVE DATA**  
 PI Sta 12+...  
 $\Delta = 13^{\circ} 2'$   
 $D = 7^{\circ} 47'$   
 $L = 173.19'$   
 $T = 87.01'$   
 $R = 735.00'$   
 $SE = NC$



CLEARING AND GRUBBING  
 EROSION CONTROL FOR  
 CONSTRUCTION SHEET 4

NOTE: UTILIZE FABRIC INSERT INLET PROTECTION DEVICES IN LIEU OF ROCK INLET SEDIMENT TRAPS, TYPE-C AS DIRECTED TO AVOID IMPOUNDMENT OF RUNOFF IN ROADWAY OPEN TO TRAFFIC.

NOTE: PLACE TEMPORARY ROCK SEDIMENT DAMS TYPE - B AND TEMPORARY ROCK SILT CHECKS TYPE - A AT DRAINAGE OUTLETS.

NOTES: ANY DEVIATION FROM OPTIONS GIVEN WILL REQUIRE PRIOR APPROVAL BY ENGINEER.

ADDITIONAL EROSION CONTROL DEVICES MAY NEED TO BE INSTALLED AS DIRECTED BY THE ENGINEER.

REVISIONS

8/17/99  
 13-MAR-2023 13:49  
 R:\Projects\2023\1310\1310-01\Design\Plan\_Sheets\C5621-EC-4.dgn  
 \$\$\$\$USERNAME\$\$\$\$