

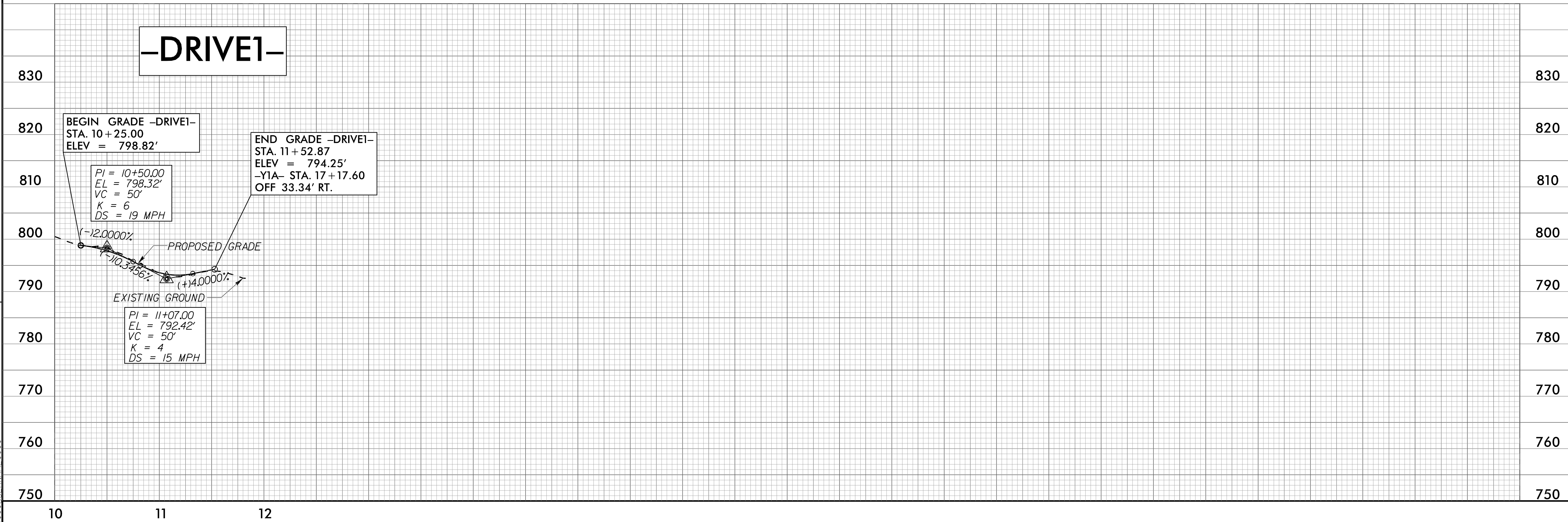
8/17/99

-DRIVE1- DETOUR

-DRIVE1- CURVE DATA

PI Sta 10+53.39	PI Sta 11+00.09
$\Delta = 54^{\circ} 32' 57.6" (LT)$	$\Delta = 44^{\circ} 36' 48.2" (RT)$
$D = 95^{\circ} 29' 34.7"$	$D = 114^{\circ} 35' 29.6"$
$L = 57.12'$	$L = 38.93'$
$T = 30.93'$	$T = 20.51'$
$R = 60.00'$	$R = 50.00'$
SE = STOP CONDITION	SE = STOP CONDITION
RO = STOP CONDITION	RO = STOP CONDITION

-DRIVE1-



BEGIN GRADE -DRIVE1-
STA. 10+25.00
ELEV = 798.82'

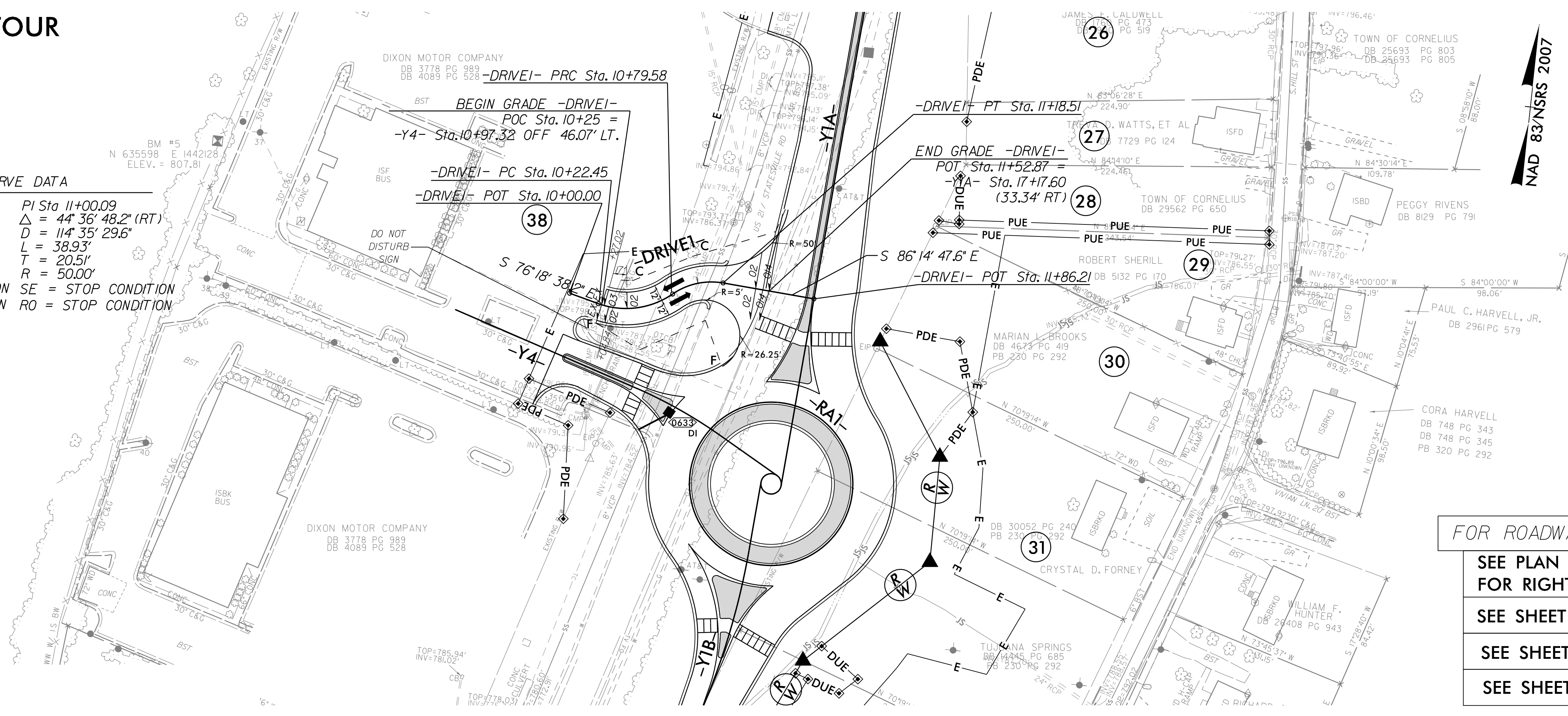
END GRADE -DRIVE1-
STA. 11+52.87
ELEV = 794.25'
-Y1A- STA. 17+17.60
OFF 33.34' RT.

PI = 10+50.00
EL = 798.32'
VC = 50'
K = 6
DS = 19 MPH

PI = 11+07.00
EL = 792.42'
VC = 50'
K = 4
DS = 15 MPH

PROPOSED GRADE
EXISTING GROUND

FOR ROADWAY PLANS, SEE SHEET 6
SEE PLAN SHEETS RW04, RW05, RW06
FOR RIGHT OF WAY INFORMATION
SEE SHEET 7 FOR -Y1A- PROFILE
SEE SHEET 8 FOR -Y1B- PROFILE
SEE SHEET 9 FOR -Y4- PROFILE



NAD 83/NSRS 2007

PROJECT REFERENCE NO. C-5621	SHEET NO. 2B-6
RW SHEET NO.	
ROADWAY DESIGN ENGINEER SEAL 030952 9/20/2023	HYDRAULICS ENGINEER SEAL 049764
DOCUMENT NOT CONSIDERED FINAL UNLESS ALL SIGNATURES COMPLETED	

RS&H 1520 SOUTH BOULEVARD, SUITE 200
CHARLOTTE, NC 28203
NC FIRM LICENSE No: F-0493

REVISIONS

IR-SEP-2023 14:32
R:\Roadway\Pro\AC-5621\Roadway\psh-DETOUR.dgn