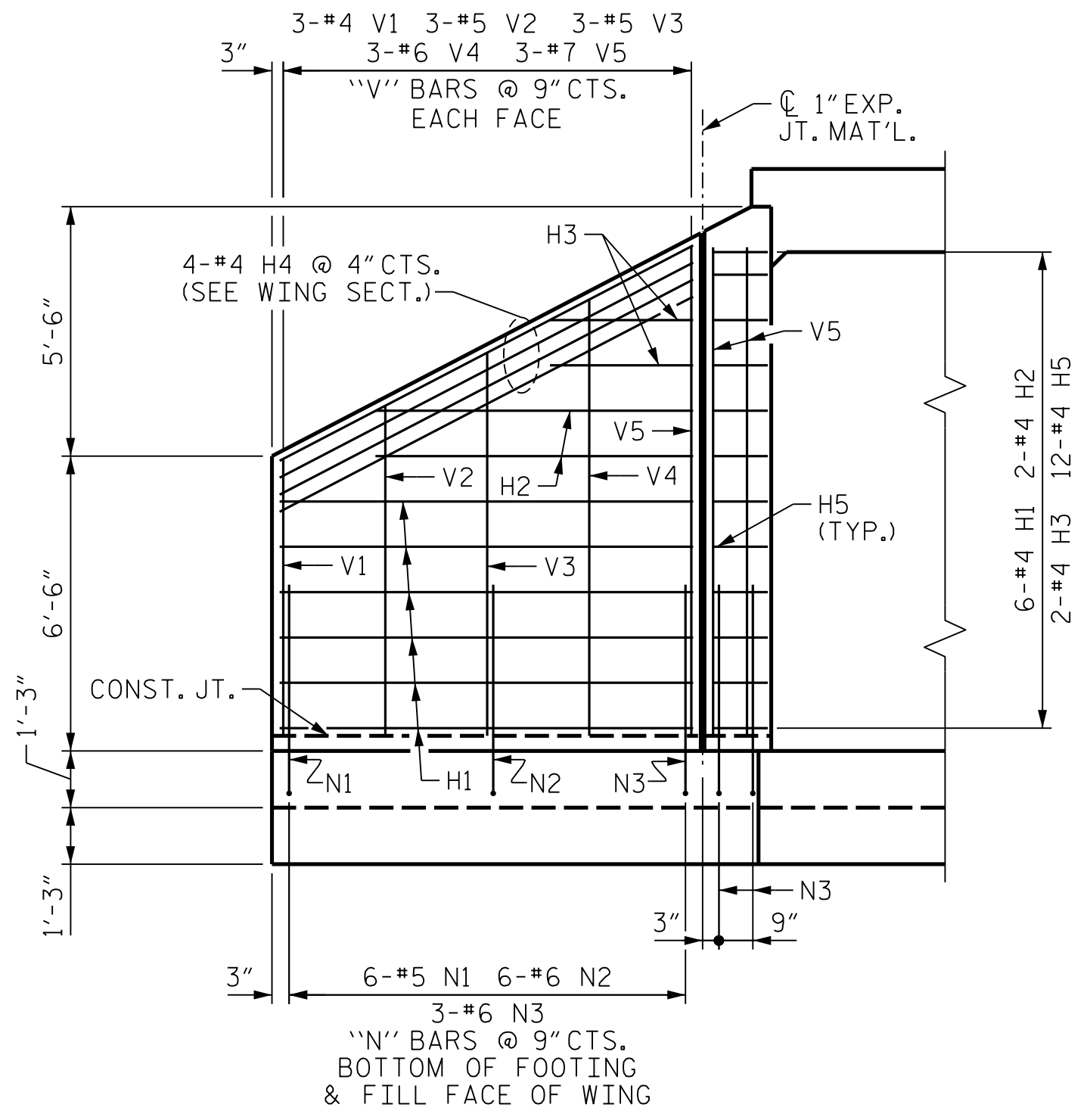
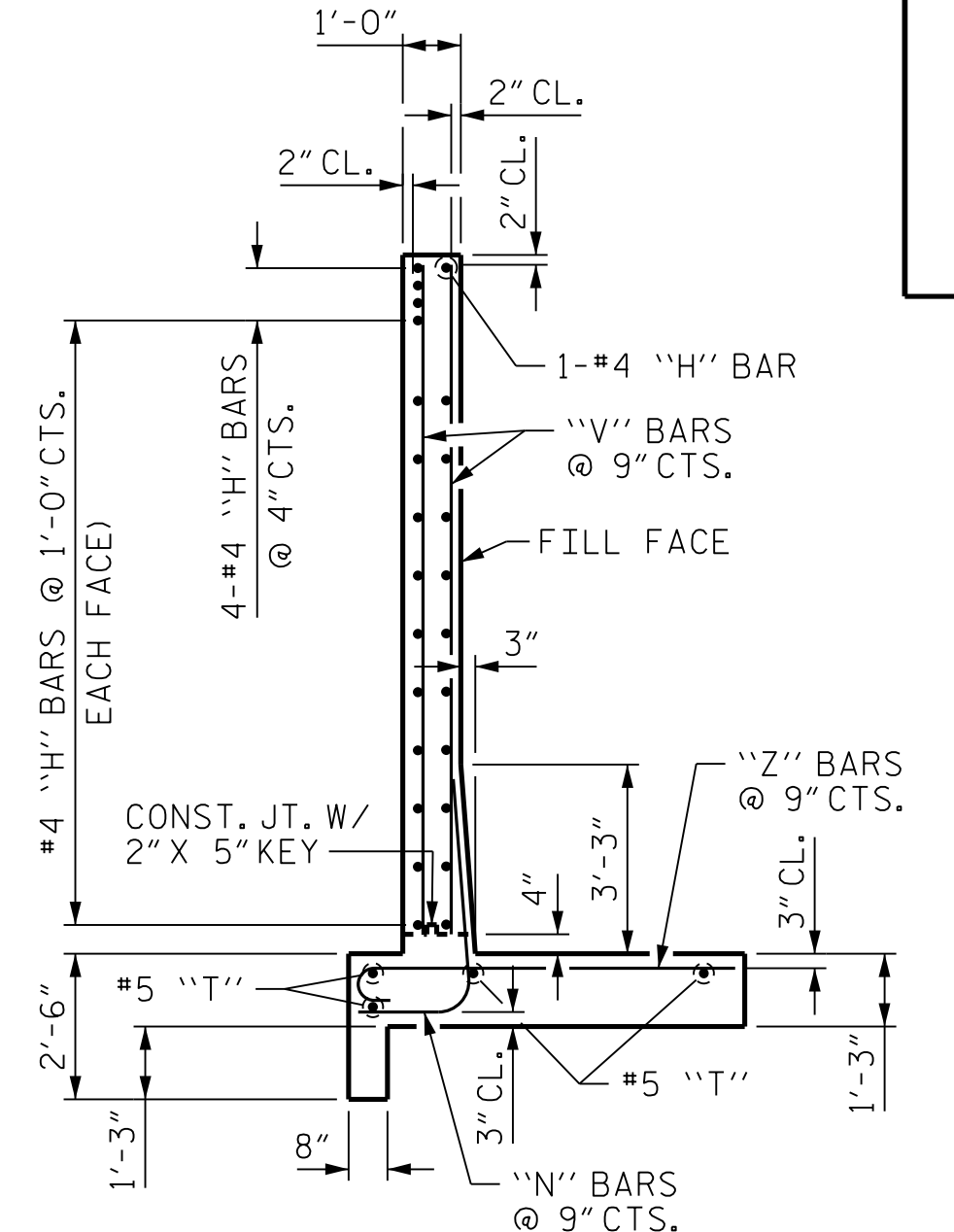


PLAN W1

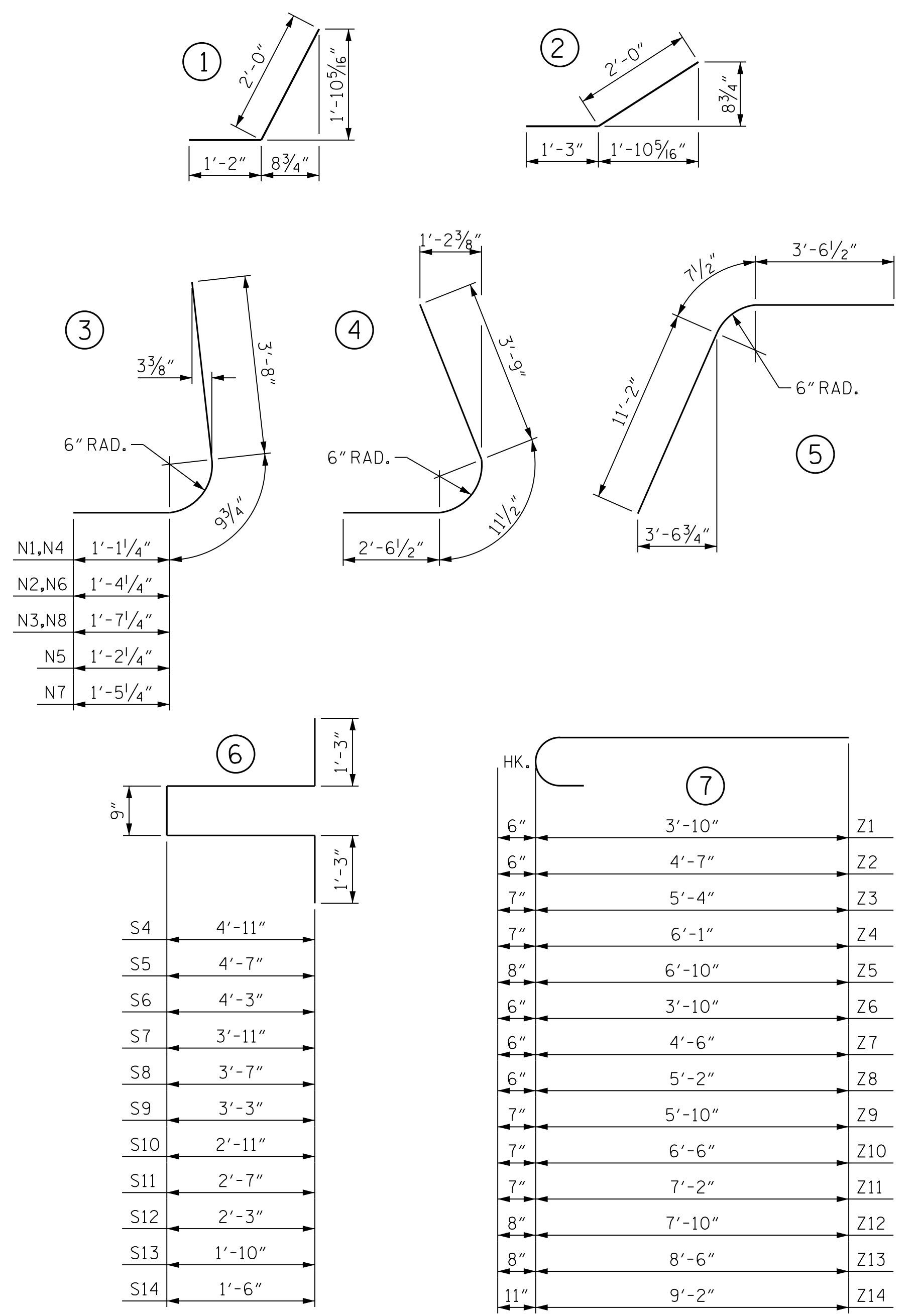


ELEVATION W1



TYPICAL WING SECTION

BAR TYPES



ALL BAR DIMENSIONS ARE OUT TO OUT.

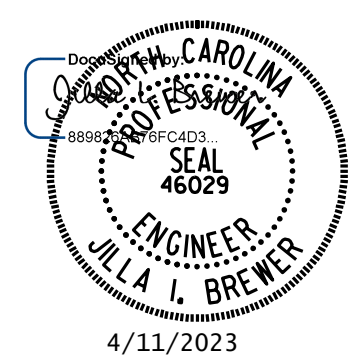
BILL OF MATERIAL

BAR NO.	SIZE	TYPE	LENGTH	WEIGHT	BAR NO.	SIZE	TYPE	LENGTH	WEIGHT		
B1	2	#4	STR	12'-0"	16	T1	4	#5	STR	11'-0"	46
						T2	4	#5	STR	35'-0"	146
C2	16	#6	STR	10'-9"	258	T3	2	#5	STR	15'-0"	31
H1	12	#4	STR	9'-1"	73	V1	6	#4	STR	6'-1"	24
H2	4	#4	STR	7'-0"	19	V2	6	#5	STR	7'-3"	45
H3	4	#4	STR	3'-1"	8	V3	6	#5	STR	8'-5"	53
H4	5	#4	STR	10'-3"	34	V4	6	#6	STR	9'-7"	86
H5	24	#4	1	3'-2"	51	V5	6	#7	STR	10'-9"	132
H6	12	#4	STR	33'-1"	265	V6	10	#4	STR	6'-0"	40
H7	4	#4	STR	26'-0"	69	V7	10	#4	STR	6'-7"	44
H8	4	#4	STR	13'-9"	37	V8	10	#5	STR	7'-3"	76
H9	5	#4	STR	33'-6"	112	V9	10	#5	STR	7'-10"	82
H10	24	#4	2	3'-3"	52	V10	10	#5	STR	8'-5"	88
						V11	10	#5	STR	9'-1"	95
N1	6	#5	3	5'-7"	35	V12	10	#6	STR	9'-8"	145
N2	6	#6	3	5'-10"	53	V13	10	#6	STR	10'-3"	154
N3	3	#6	3	6'-1"	27	V14	8	#6	STR	10'-10"	130
N4	10	#5	3	5'-7"	58	V15	4	#7	STR	11'-4"	93
N5	10	#5	3	5'-8"	59	V16	2	#4	STR	5'-10"	8
N6	10	#6	3	5'-10"	88	V17	2	#4	STR	8'-9"	12
N7	10	#6	3	5'-11"	89	V18	2	#4	STR	11'-4"	15
N8	7	#6	3	6'-1"	64						
						Z1	3	#4	7	4'-4"	9
P1	2	#9	4	7'-3"	49	Z2	3	#4	7	5'-1"	10
P2	2	#9	5	15'-4"	104	Z3	3	#5	7	5'-11"	19
						Z4	3	#5	7	6'-8"	21
S3	6	#6	6	6'-0"	54	Z5	3	#6	7	7'-6"	34
S4	1	#4	6	13'-1"	9	Z6	5	#4	7	4'-4"	14
S5	1	#4	6	12'-5"	8	Z7	5	#4	7	5'-0"	17
S6	1	#4	6	11'-9"	8	Z8	5	#4	7	5'-8"	19
S7	1	#4	6	11'-1"	7	Z9	5	#5	7	6'-5"	33
S8	1	#4	6	10'-5"	7	Z10	5	#5	7	7'-1"	37
S9	1	#4	6	9'-9"	7	Z11	5	#5	7	7'-9"	40
S10	1	#4	6	9'-1"	6	Z12	5	#6	7	8'-6"	64
S11	1	#4	6	8'-5"	6	Z13	5	#6	7	9'-2"	69
S12	1	#4	6	7'-9"	5	Z14	5	#8	7	10'-1"	135
S13	1	#4	6	6'-11"	5	Z15	6	#10	STR	9'-9"	252
S14	1	#4	6	6'-3"	4	Z16	7	#10	STR	11'-0"	331
						Z17	8	#10	STR	10'-0"	344
						Z18	8	#10	STR	9'-1"	313

REINFORCING STEEL FOR 2 WINGS	5,052 LBS
CLASS A CONCRETE	
2 WINGS	40.6 CY
1 HEADWALL	1.7 CY
1 END CURTAIN WALL	1.9 CY
TOTAL	44.2 CY

PROJECT NO. U-5312
 WILKES COUNTY
 STATION: 179+42.00 -L-

SHEET 8 OF 8



DOCUMENT NOT CONSIDERED FINAL UNLESS ALL SIGNATURES COMPLETED

MI ENGINEERING
 1011 SCHAUH DRIVE, SUITE 100
 RALEIGH, NC 27606
 (919) 851-6606
 FIRM PE NUMBER: P-0671

REVISIONS						SHEET NO.
NO.	BY:	DATE:	NO.	BY:	DATE:	C1-8
1			3			TOTAL SHEETS 8
2			4			

4/11/2023 1:11:43 PM User: blanning
 Filenamer: N:\NC Bridges\MI7004_VHB_U-5312_Culverts & Walls\U-5312\Structures\410_015_U5312_SML\CUB_960062.dgn

DRAWN BY: B.E. LANNING DATE: 06/2022
 CHECKED BY: J.I. BREWER DATE: 09/2022
 DESIGN ENGINEER OF RECORD: J.I. BREWER DATE: 09/2022