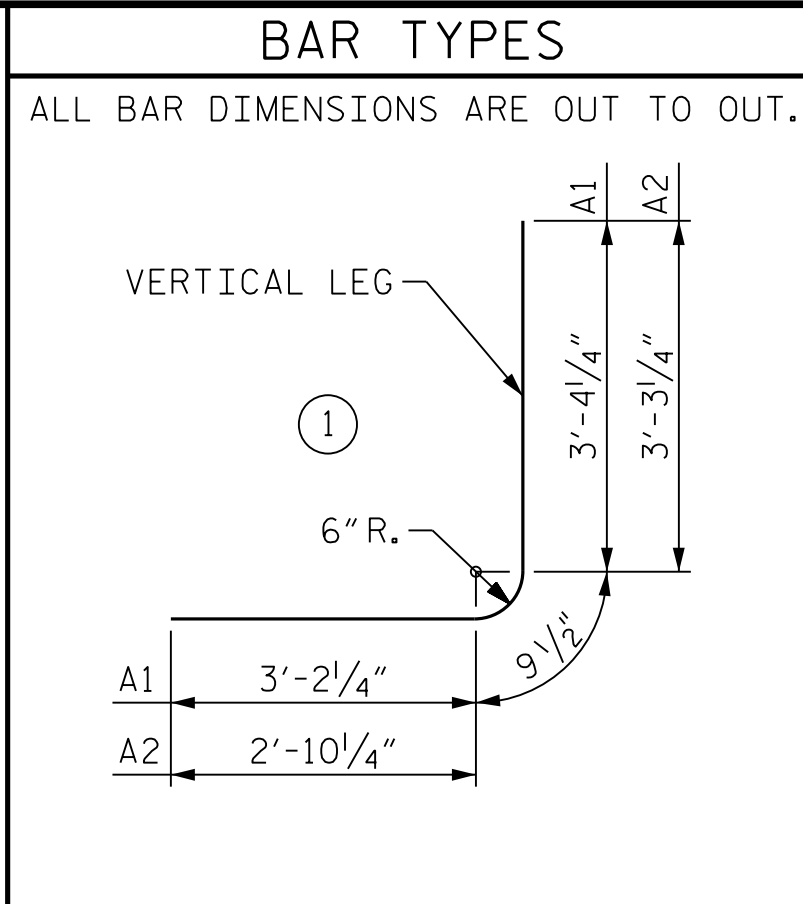


**RIGHT EXTENSION QUANTITIES**

CLASS A CONCRETE		
BARREL @ 2.61 C.Y./FT.	65.3	C.Y.
2 EDGE BEAM	2.7	C.Y.
TOTAL	68.0	C.Y.
REINFORCING STEEL	11,582	LBS.

**SPLICE LENGTH CHART**

BAR	SIZE	SPLICE LENGTH
A200	#6	2'-9"
A400	#6	2'-9"
B1	#4	1'-10"
B3	#4	1'-10"
C2	#4	2'-5"
S4	#8	3'-8"
S6	#6	2'-9"



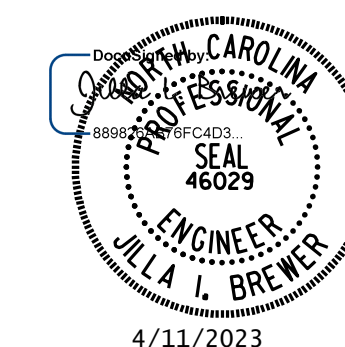
**BILL OF MATERIAL**

**RIGHT EXTENSION**

BAR NO.	SIZE	TYPE	LENGTH	WEIGHT	BAR NO.	SIZE	TYPE	LENGTH	WEIGHT	BAR NO.	SIZE	TYPE	LENGTH	WEIGHT			
A1	98	#6	5	7'-2"	1,055	A300	3	#6	STR	22'-9"	103	A400	5	#6	STR	21'-10"	164
A2	94	#6	5	6'-11"	977	A301	2	#6	STR	22'-5"	67	A401	2	#6	STR	21'-6"	65
A100	1	#6	STR	22'-9"	34	A302	2	#6	STR	21'-11"	66	A402	2	#6	STR	21'-0"	63
A101	2	#6	STR	22'-5"	67	A303	2	#6	STR	21'-6"	65	A403	2	#6	STR	20'-7"	62
A102	2	#6	STR	21'-6"	65	A304	2	#6	STR	21'-0"	63	A404	2	#6	STR	20'-1"	60
A103	2	#6	STR	20'-7"	62	A305	2	#6	STR	20'-7"	62	A405	2	#6	STR	19'-8"	59
A104	2	#6	STR	19'-8"	59	A306	2	#6	STR	20'-1"	60	A406	2	#6	STR	19'-2"	58
A105	2	#6	STR	18'-8"	56	A307	2	#6	STR	19'-8"	59	A407	2	#6	STR	18'-9"	56
A106	2	#6	STR	17'-9"	53	A308	2	#6	STR	19'-2"	58	A408	2	#6	STR	18'-3"	55
A107	2	#6	STR	16'-10"	51	A309	2	#6	STR	18'-8"	56	A409	2	#6	STR	17'-9"	53
A108	2	#6	STR	15'-11"	48	A310	2	#6	STR	18'-3"	55	A410	2	#6	STR	17'-4"	52
A109	2	#6	STR	15'-0"	45	A311	2	#6	STR	17'-9"	53	A411	2	#6	STR	16'-10"	51
A110	2	#6	STR	14'-1"	42	A312	2	#6	STR	17'-4"	52	A412	2	#6	STR	16'-5"	49
A111	2	#6	STR	13'-1"	39	A313	2	#6	STR	16'-10"	51	A413	2	#6	STR	15'-11"	48
A112	2	#6	STR	12'-2"	37	A314	2	#6	STR	16'-5"	49	A414	2	#6	STR	15'-5"	46
A113	2	#6	STR	11'-3"	34	A315	2	#6	STR	15'-11"	48	A415	2	#6	STR	15'-0"	45
A114	2	#6	STR	10'-4"	31	A316	2	#6	STR	15'-5"	46	A416	2	#6	STR	14'-6"	44
A115	2	#6	STR	9'-5"	28	A317	2	#6	STR	15'-0"	45	A417	2	#6	STR	14'-1"	42
A116	2	#6	STR	8'-6"	26	A318	2	#6	STR	14'-6"	44	A418	2	#6	STR	13'-7"	41
A117	2	#6	STR	7'-7"	23	A319	2	#6	STR	14'-1"	42	A419	2	#6	STR	13'-2"	40
A118	2	#6	STR	6'-7"	20	A320	2	#6	STR	13'-7"	41	A420	2	#6	STR	12'-8"	38
A119	2	#6	STR	5'-8"	17	A321	2	#6	STR	13'-1"	39	A421	2	#6	STR	12'-2"	37
A120	2	#6	STR	4'-9"	14	A322	2	#6	STR	12'-8"	38	A422	2	#6	STR	11'-9"	35
A121	2	#6	STR	3'-10"	12	A323	2	#6	STR	12'-2"	37	A423	2	#6	STR	11'-3"	34
A122	2	#6	STR	2'-11"	9	A324	2	#6	STR	11'-9"	35	A424	2	#6	STR	10'-10"	33
A123	2	#6	STR	2'-0"	6	A325	2	#6	STR	11'-3"	34	A425	2	#6	STR	10'-4"	31
A200	3	#6	STR	21'-10"	98	A326	2	#6	STR	10'-10"	33	A426	2	#6	STR	9'-11"	30
A201	2	#6	STR	21'-0"	63	A327	2	#6	STR	10'-4"	31	A427	2	#6	STR	9'-5"	28
A202	2	#6	STR	20'-1"	60	A328	2	#6	STR	9'-10"	30	A428	2	#6	STR	8'-11"	27
A203	2	#6	STR	19'-2"	58	A329	2	#6	STR	9'-5"	28	A429	2	#6	STR	8'-6"	26
A204	2	#6	STR	18'-3"	55	A330	2	#6	STR	8'-11"	27	A430	2	#6	STR	8'-0"	24
A205	2	#6	STR	17'-4"	52	A331	2	#6	STR	8'-6"	26	A431	2	#6	STR	7'-7"	23
A206	2	#6	STR	16'-5"	49	A332	2	#6	STR	8'-0"	24	A432	2	#6	STR	7'-1"	21
A207	2	#6	STR	15'-5"	46	A333	2	#6	STR	7'-7"	23	A433	2	#6	STR	6'-8"	20
A208	2	#6	STR	14'-6"	44	A334	2	#6	STR	7'-1"	21	A434	2	#6	STR	6'-2"	19
A209	2	#6	STR	13'-7"	41	A335	2	#6	STR	6'-7"	20	A435	2	#6	STR	5'-8"	17
A210	2	#6	STR	12'-8"	38	A336	2	#6	STR	6'-2"	19	A436	2	#6	STR	5'-3"	16
A211	2	#6	STR	11'-9"	35	A337	2	#6	STR	5'-8"	17	A437	2	#6	STR	4'-9"	14
A212	2	#6	STR	10'-10"	33	A338	2	#6	STR	5'-3"	16	A438	2	#6	STR	4'-4"	13
A213	2	#6	STR	9'-11"	30	A339	2	#6	STR	4'-9"	14	A439	2	#6	STR	3'-10"	12
A214	2	#6	STR	8'-11"	27	A340	2	#6	STR	4'-4"	13	A440	2	#6	STR	3'-5"	10
A215	2	#6	STR	8'-0"	24	A341	2	#6	STR	3'-10"	12	B1	48	#5	STR	12'-5"	622
A216	2	#6	STR	7'-1"	21						B2	48	#4	STR	10'-4"	331	
A217	2	#6	STR	6'-2"	19						B3	48	#4	STR	12'-5"	398	
A218	2	#6	STR	5'-3"	16						C1	97	#4	STR	24'-5"	1,582	
A219	2	#6	STR	4'-4"	13						D1	46	#6	STR	2'-6"	173	
A220	2	#6	STR	3'-5"	10						G1	4	#5	STR	35'-2"	147	
A221	2	#6	STR	2'-5"	7						S1	6	#8	STR	35'-2"	563	
											S2	12	#6	STR	35'-2"	634	

PROJECT NO. U-5312  
**WILKES** COUNTY  
 STATION: 179+42.00 -L-

SHEET 6 OF 8



STATE OF NORTH CAROLINA  
 DEPARTMENT OF TRANSPORTATION  
 RALEIGH  
**RIGHT EXTENSION**  
**DOUBLE 11 FT. X 11 FT.**  
**CONCRETE BOX CULVERT**  
**42°-54'-00" SKEW**

**DOCUMENT NOT CONSIDERED FINAL**  
**UNLESS ALL SIGNATURES COMPLETED**

MI ENGINEERING  
 1011 SCHAUB DRIVE, SUITE 100  
 RALEIGH, NC 27606  
 (919) 851-6606  
 FIRM PE NUMBER : P-0671

REVISIONS						SHEET NO.
NO.	BY:	DATE:	NO.	BY:	DATE:	TOTAL SHEETS
1			3			
2			4			

DRAWN BY : <u>B.E. LANNING</u>	DATE : <u>05/2022</u>
CHECKED BY : <u>J.I. BREWER</u>	DATE : <u>09/2022</u>
DESIGN ENGINEER OF RECORD : <u>J.I. BREWER</u>	DATE : <u>09/2022</u>