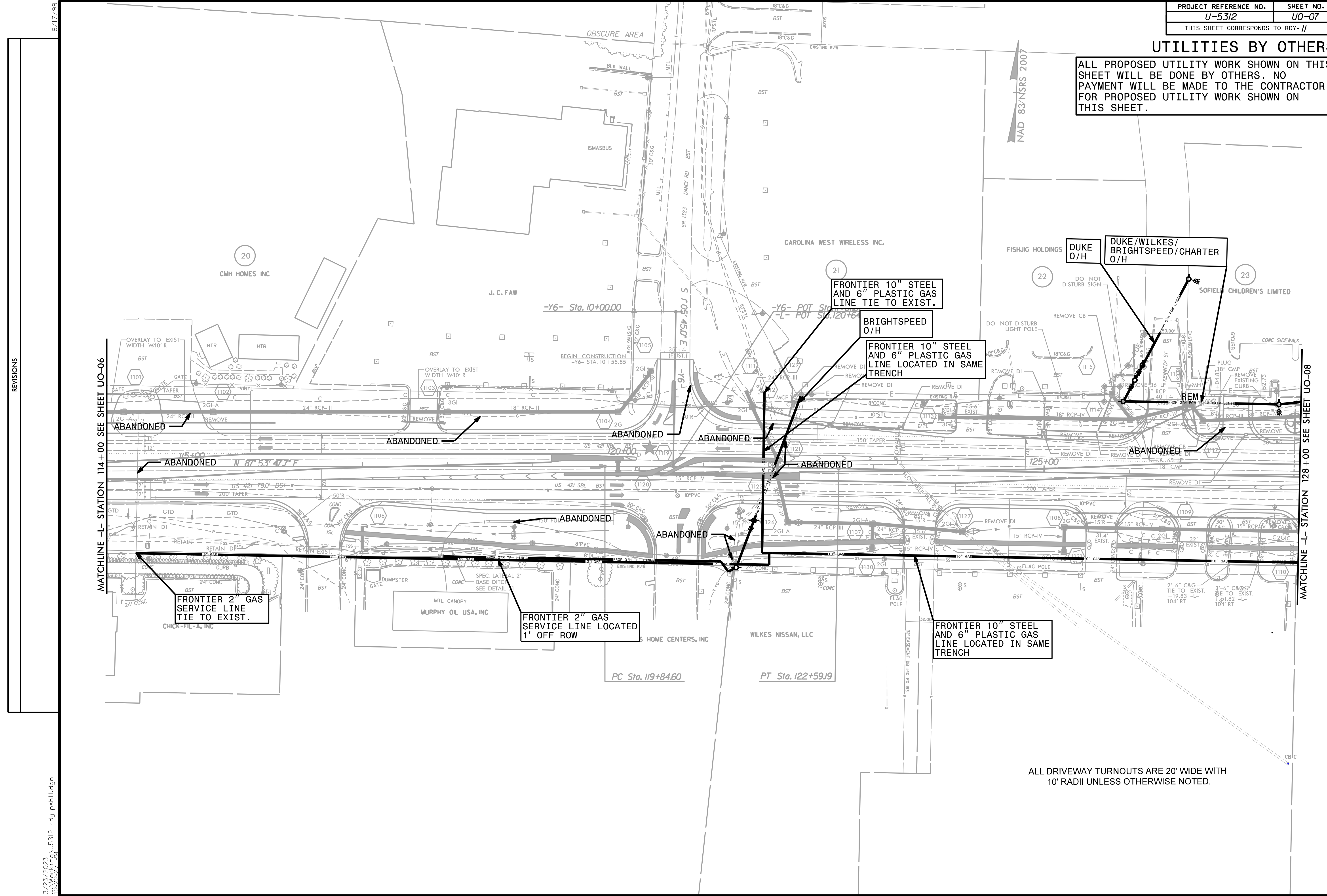


UTILITIES BY OTHERS

ALL PROPOSED UTILITY WORK SHOWN ON THIS SHEET WILL BE DONE BY OTHERS. NO PAYMENT WILL BE MADE TO THE CONTRACTOR FOR PROPOSED UTILITY WORK SHOWN ON THIS SHEET.



FRONTIER 10" STEEL AND 6" PLASTIC GAS LINE TIE TO EXIST.

BRIGHTSPEED O/H

FRONTIER 10" STEEL AND 6" PLASTIC GAS LINE LOCATED IN SAME TRENCH

DUKE O/H

DUKE/WILKES/BRIGHTSPEED/CHARTER O/H

FRONTIER 2" GAS SERVICE LINE TIE TO EXIST.

FRONTIER 2" GAS SERVICE LINE LOCATED 1' OFF ROW

FRONTIER 10" STEEL AND 6" PLASTIC GAS LINE LOCATED IN SAME TRENCH

ALL DRIVEWAY TURNOUTS ARE 20' WIDE WITH 10' RADII UNLESS OTHERWISE NOTED.

REVISIONS

MATCHLINE -L- STATION 114+00 SEE SHEET UO-06

MATCHLINE -L- STATION 128+00 SEE SHEET UO-08

8/17/99

3/23/2023
 12:02:07 PM
 U5312_rdy_psh11.dgn