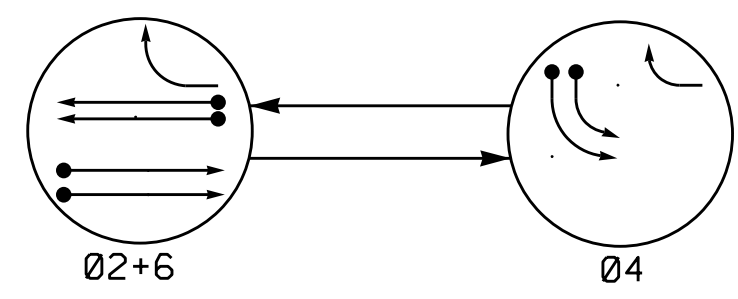
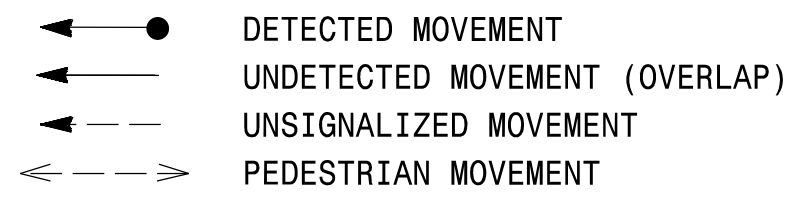


PHASING DIAGRAM

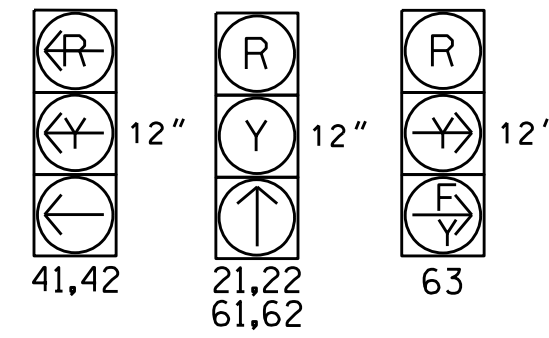


PHASING DIAGRAM DETECTION LEGEND



SIGNAL FACE I.D.

All Heads L.E.D.

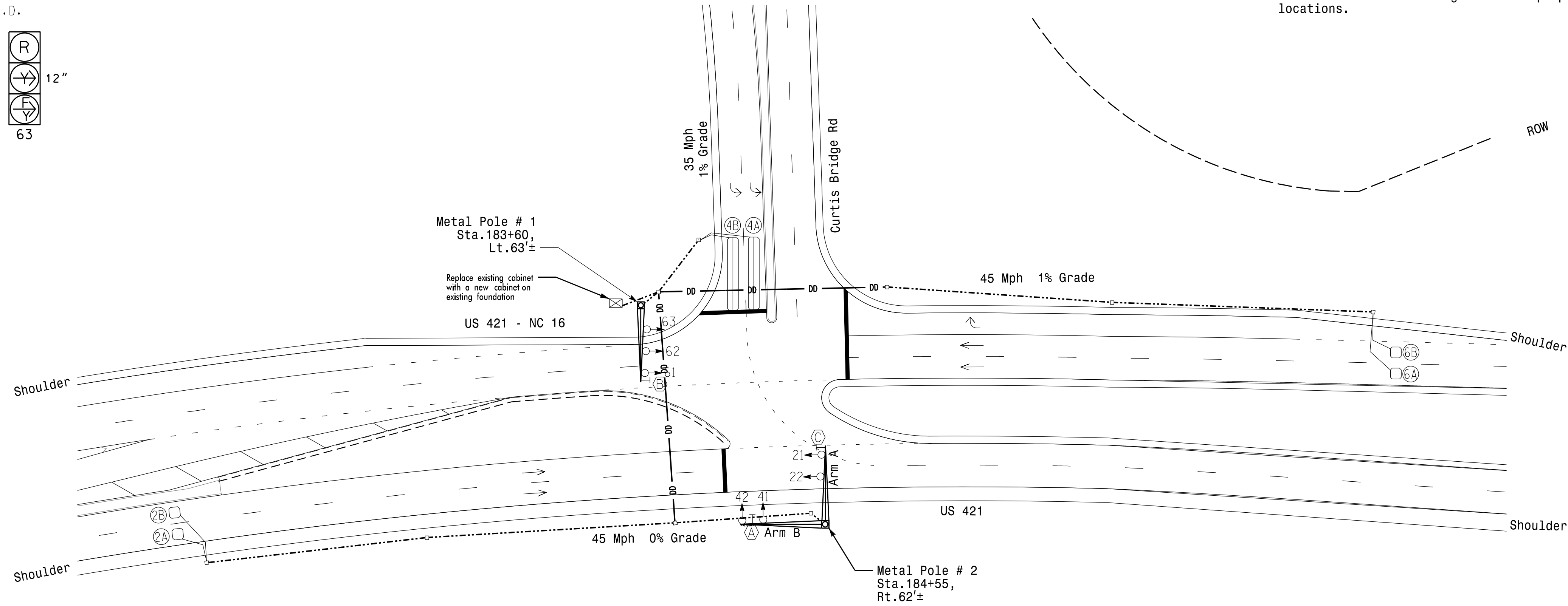


SIGNAL FACE	PHASE		
	2	4	6
21,22	↑	R	Y
41,42	←	—	←
61,62	↑	R	Y
63	←	←	←

LOOP	SIZE (FT)	DISTANCE FROM STOPBAR (FT)	TURNS	NEW LOOP	PROGRAMMING							
					CALL PHASE	DELAY TIME	EXTEND TIME	EXTEND INITIAL	ADDED INITIAL	CALL	DELAY DURING GREEN	NEW CARD
2A	6X6	300	5	X	2	-	-	X	X	X	-	X
2B	6X6	300	5	X	2	-	-	X	X	X	-	X
4A	6X40	0	2-4-2	X	4	-	-	X	-	X	-	X
4B	6X40	0	2-4-2	X	4	-	-	X	-	X	-	X
6A	6X6	300	5	X	6	-	-	X	X	X	-	X
6B	6X6	300	5	X	6	-	-	X	X	X	-	X

2 Phase Fully Actuated Wilkesboro Closed Loop System NOTES

- Refer to "Roadway Standard Drawings NCDOT" dated January 2018 and "Standard Specifications for Roads and Structures" dated January 2018.
- Do not program signal for late night flashing operation unless otherwise directed by the Engineer.
- Set all detector units to presence mode.
- Locate new cabinet so as not to obstruct sight distance of vehicles turning right on red.
- Maximum times shown in timing chart are for free-run operation only. Coordinated signal system timing values supersede these values.
- Refer to Pavement Marking Plans for proposed stop bar locations.

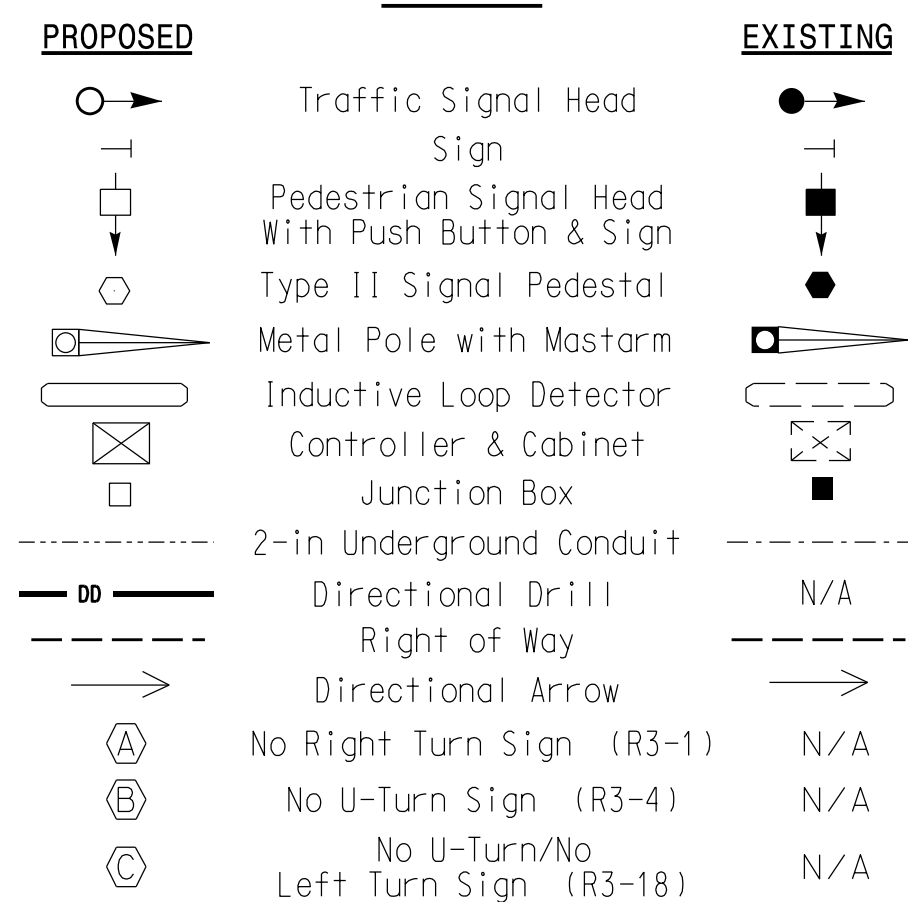


MAXTIME TIMING CHART

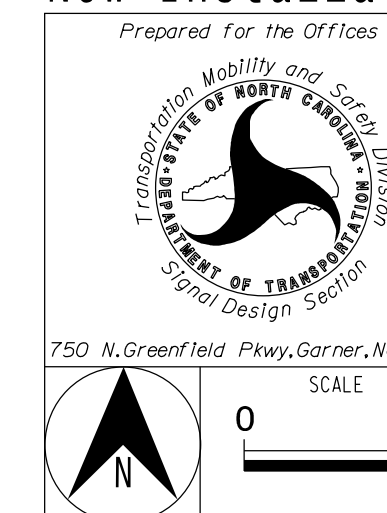
FEATURE	PHASE		
	2	4	6
Walk *	0	0	0
Ped Clear *	0	0	0
Min Green	12	7	12
Passage *	6.0	2.0	6.0
Max 1 *	60	30	60
Yellow Change	4.5	4.5	4.4
Red Clear	1.0	1.0	1.1
Added Initial *	1.5	-	1.5
Maximum Initial *	34	-	34
Time Before Reduction *	15	-	15
Time To Reduce *	30	-	30
Minimum Gap	3.4	-	3.4
Advance Walk	-	-	-
Non Lock Detector	-	X	-
Vehicle Recall	MIN RECALL	-	MIN RECALL
Dual Entry	-	-	-

* These values may be field adjusted. Do not adjust Min Green and Extension times for phases 2 and 6 lower than what is shown. Min Green for all other phases should not be lower than 4 seconds.

LEGEND



New Installation



US 421 - NC 16 at SR 1372 (Curtis Bridge Rd)	
Division 11 Wilkes County Wilkesboro	
PLAN DATE: May 2023	REVIEWED BY: M. Stygles
PREPARED BY: S.R. Chiluka	REVIEWED BY: J. Ma
REVISIONS	INIT. DATE
SIGNATURE	DATE



5/18/2023 10:56:10 AM R:\Traffic\Signals\Design\Plans\11466_sig_dsn_202305.dgn schiluka