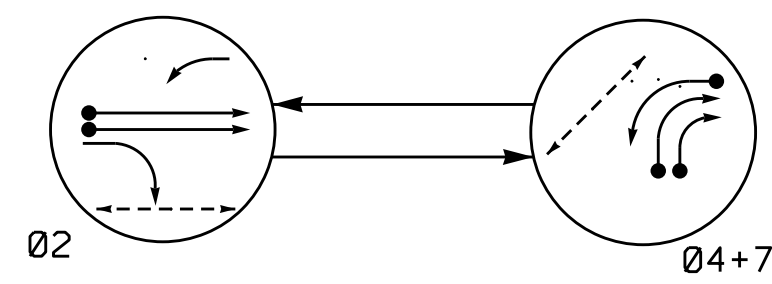
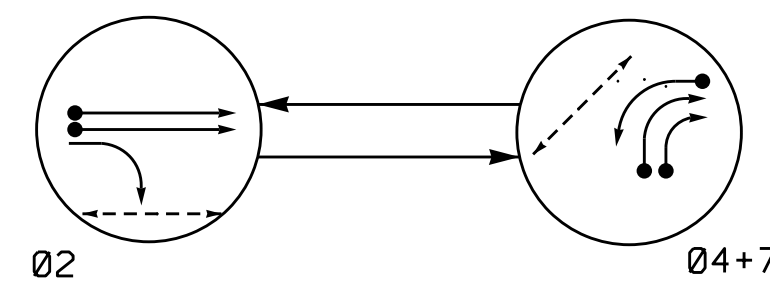


DEFAULT PHASING DIAGRAM



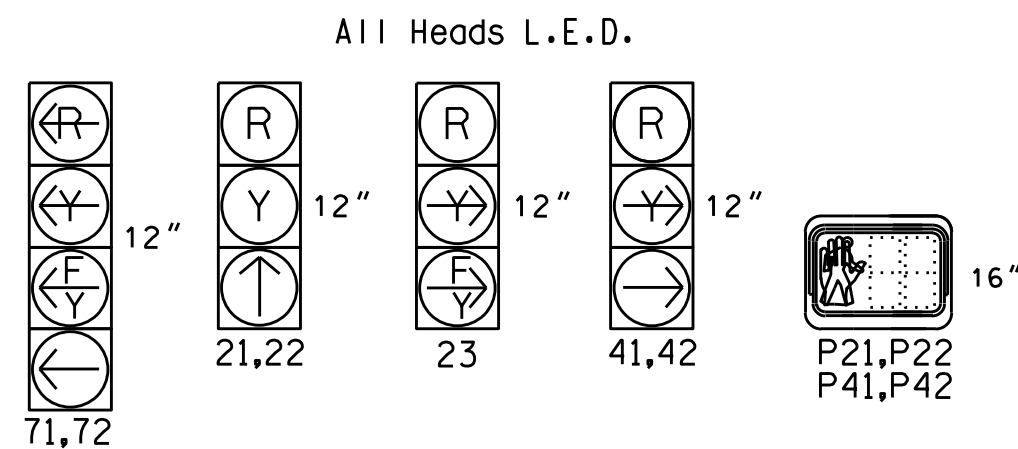
ALTERNATE PHASING DIAGRAM



PHASING DIAGRAM DETECTION LEGEND

- DETECTED MOVEMENT
- ← UNDETECTED MOVEMENT (OVERLAP)
- ← UNSIGNALIZED MOVEMENT
- ← PEDESTRIAN MOVEMENT

SIGNAL FACE I.D.



DEFAULT PHASING TABLE OF OPERATION

SIGNAL FACE	PHASE		
	02	04+7	FLASH
21,22	↑	R	Y
23	↓	R	Y
41,42	R	←	R
71,72	↓	←	Y
P21,P22	W	DW	DRK
P41,P42	DW	W	DRK

ALTERNATE PHASING TABLE OF OPERATION

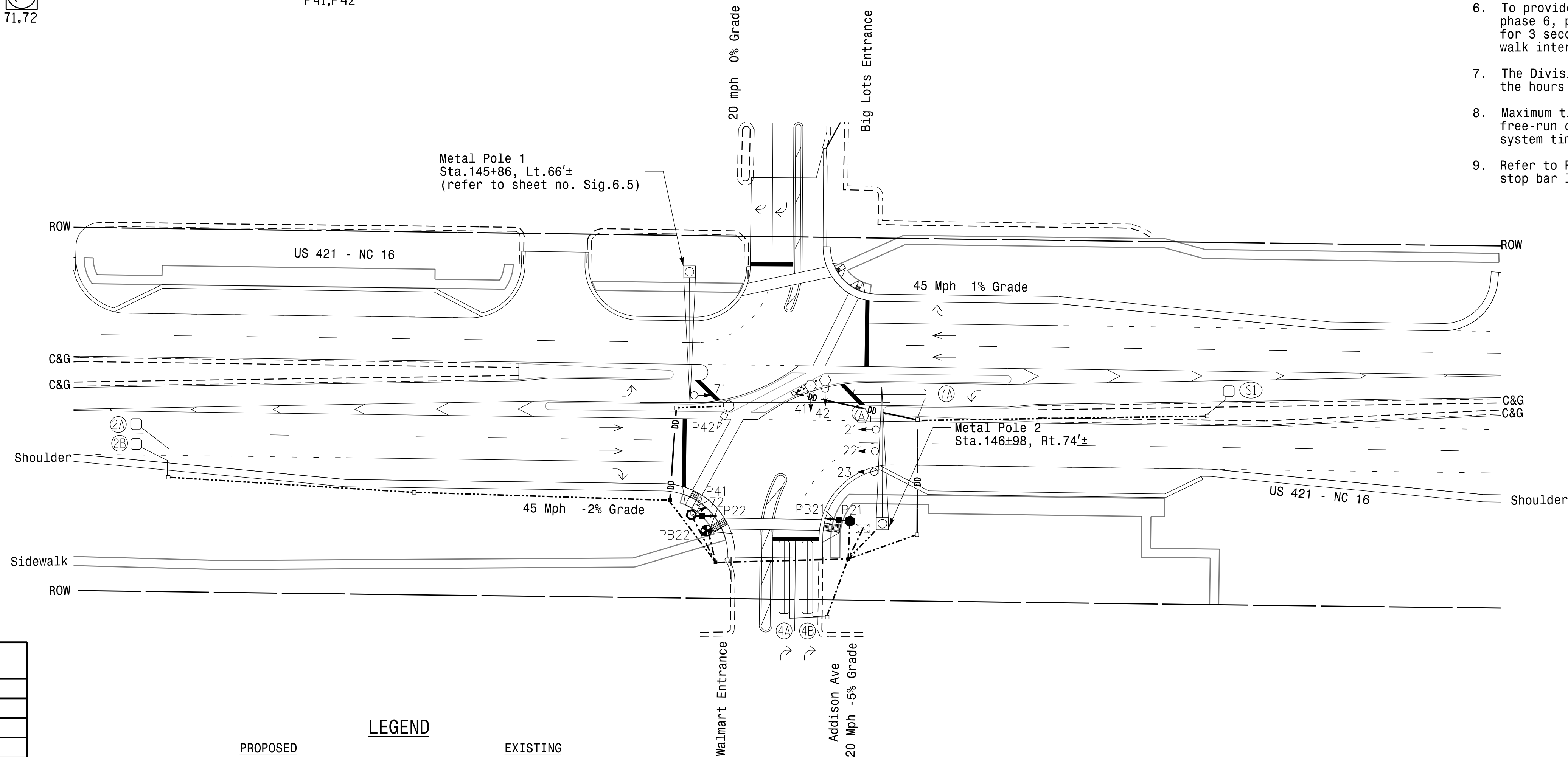
SIGNAL FACE	PHASE		
	02	04+7	FLASH
21,22	↑	R	Y
23	↓	R	Y
41,42	R	←	R
71,72	↓	←	Y
P21,P22	W	DW	DRK
P41,P42	DW	W	DRK

MAXTIME DETECTOR INSTALLATION CHART											
DETECTOR				PROGRAMMING							
LOOP	SIZE (FT)	DISTANCE FROM STOPBAR (FT)	TURNS	NEW LOOP	CALL PHASE	DELAY TIME	EXTEND TIME	EXTEND	ADDED INITIAL	CALL	DELAY DURING GREEN
2A	6X6	300	5	X	2	-	-	X	X	X	-
2B	6X6	300	5	X	2	-	-	X	X	X	-
4A	6X40	0	2-4-2	X	4	15.0	-	X	-	X	-
4B	6X40	0	2-4-2	X	4	15.0	-	X	-	X	-
7A	6X40	0	2-4-2	X	7	15.0	-	X	-	X	-
S1	6X6	200	4	X	-	-	-	-	-	-	-

\* Disable delay during alternate phasing operation

2 Phase Fully Actuated W/ Alternate Phasing Operation Wilkesboro Closed Loop System NOTES

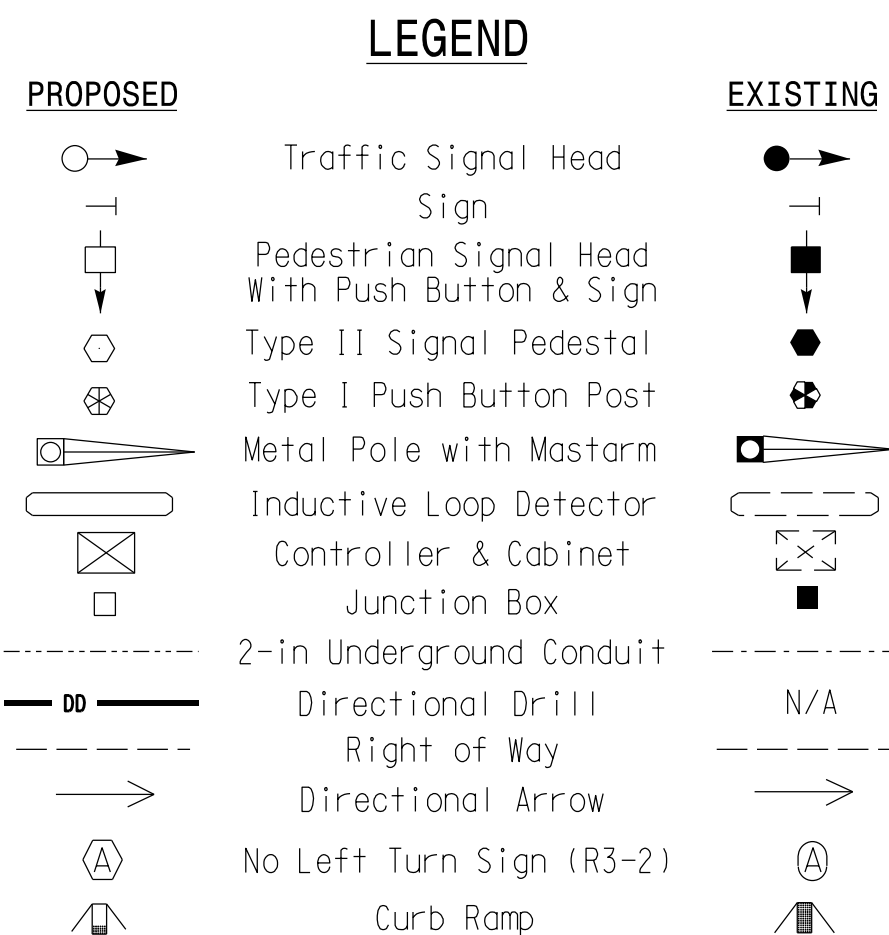
- Refer to "Roadway Standard Drawings NCDOT" dated January 2018 and "Standard Specifications for Roads and Structures" dated January 2018.
- Do not program signal for late night flashing operation unless otherwise directed by the Engineer.
- Set all detector units to presence mode.
- Omit "Walk" and flashing "Don't Walk" with no pedestrian calls.
- Program pedestrian heads to countdown the flashing "Don't Walk" time only.
- To provide a leading pedestrian interval on phase 6, program FYA heads 71 and 23 to delay for 3 seconds after the start of the phase 6 walk interval. See electrical details.
- The Division Traffic Engineer will determine the hours of use for each phasing plan.
- Maximum times shown in timing chart are for free-run operation only. Coordinated signal system timing values supersede these values.
- Refer to Pavement Marking Plans for proposed stop bar locations.



FEATURE	PHASE		
	2	4	7
Walk *	7	7	-
Ped Clear *	12	12	-
Min Green	12	7	7
Passage *	6.0	2.0	2.0
Passage 2 *	0.0	0.0	0.0
Max 1 *	60	30	30
Yellow Change	4.7	3.0	3.0
Red Clear	1.2	1.0	2.4
Added Initial *	1.5	-	-
Maximum Initial *	34	-	-
Time Before Reduction *	15	-	-
Time To Reduce *	30	-	-
Minimum Gap	3.4	-	-
Advance Walk	**	-	-
Non Lock Detector	-	X	X
Vehicle Recall	MIN RECALL	-	-
Dual Entry	-	X	X

\* These values may be field adjusted. Do not adjust Min Green and Extension times for phases 2 and 6 lower than what is shown. Min Green for all other phases should not be lower than 4 seconds.

\*\* See note 6



Signal Upgrade - Final Design

US 421-NC 16 at Addison Ave/Walmart Entrance	
Division 11 Wilkes County Wilkesboro	
PLAN DATE: May 2023	REVIEWED BY: M. Stygles
PREPARED BY: S.R. Chiluka	REVIEWED BY: J. Ma
REVISIONS	INIT. DATE



DOCUMENT NOT CONSIDERED FINAL UNLESS ALL SIGNATURES COMPLETED

SEAL

5/24/2023

SIGNATURE DATE

SIG. INVENTORY NO. 11-1463