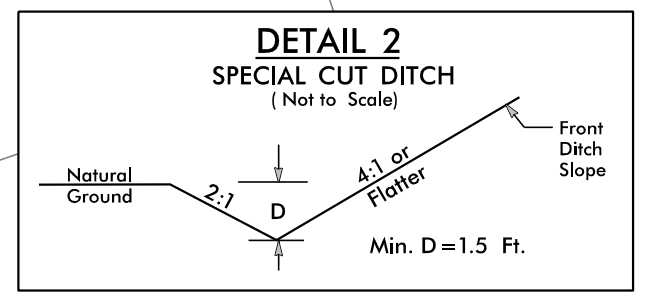
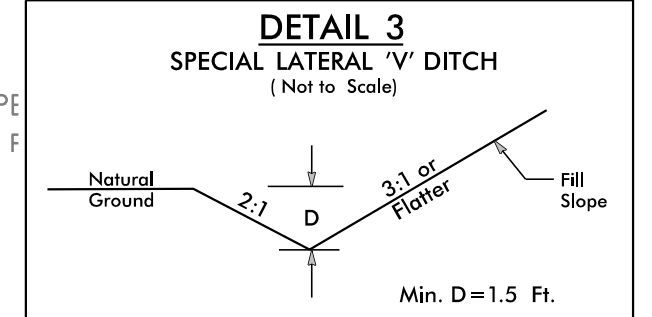


PROJECT REFERENCE NO.	SHEET NO.
U-5312	EC-25/CONST.16
RW SHEET NO.	
ROADWAY DESIGN ENGINEER	HYDRAULICS ENGINEER

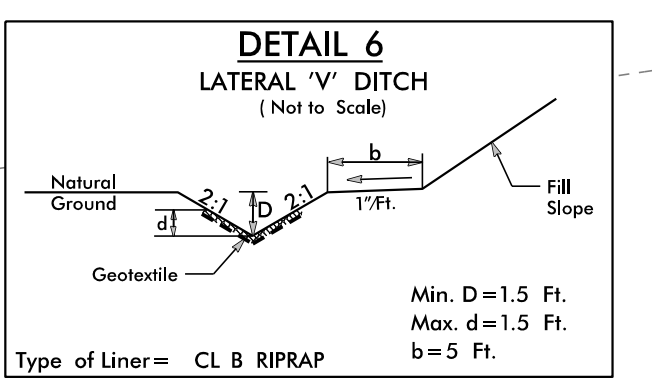
FINAL GRADING
EROSION CONTROL FOR
CONSTRUCTION SHEET 16



FROM STA. 19+60 -Y10- TO STA. 20+20 -Y10- LT
FROM STA. 15+50 -Y11- TO STA. 19+00 -Y11- LT
FROM STA. 17+50 -Y11- TO STA. 19+00 -Y11- RT



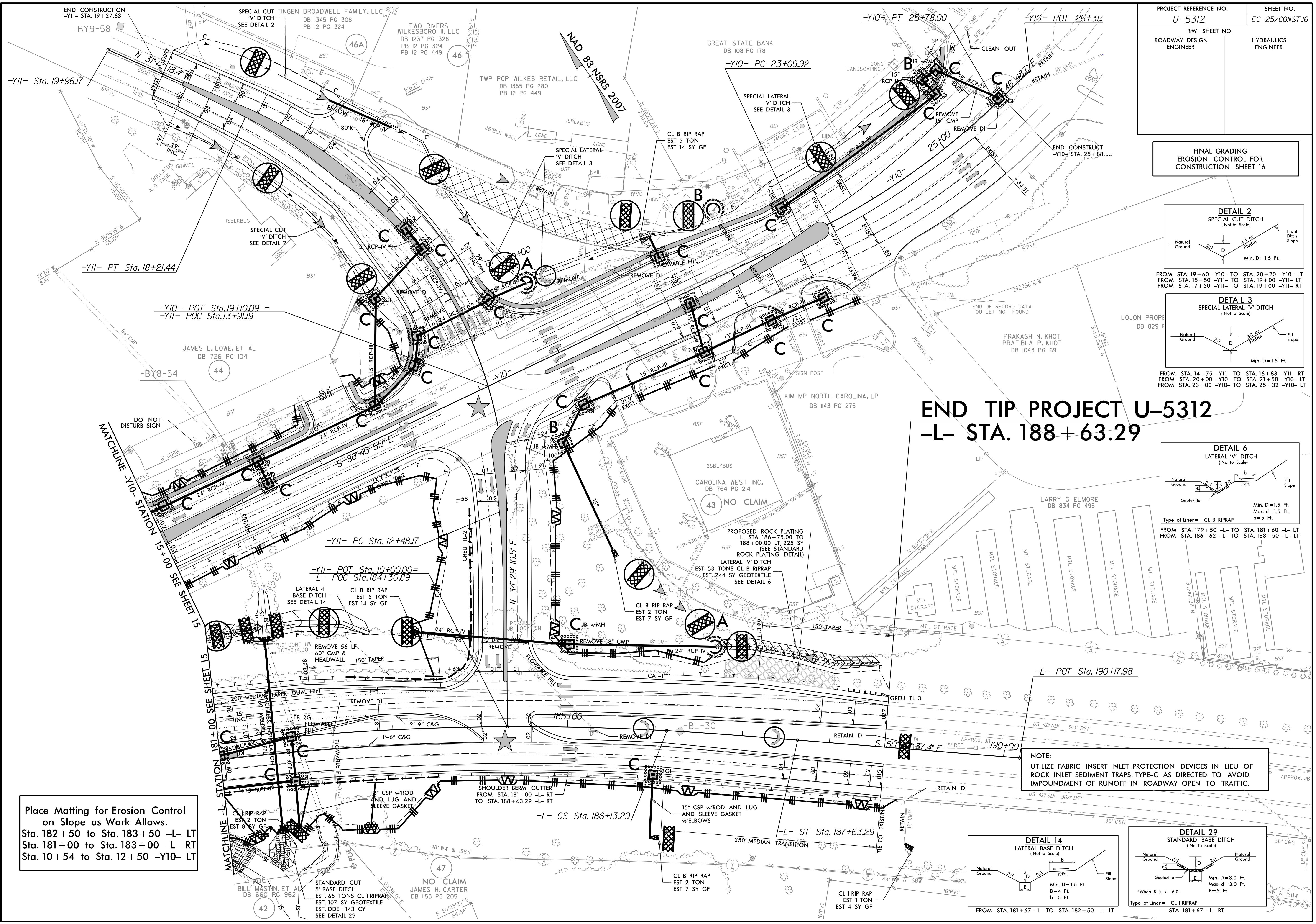
FROM STA. 14+75 -Y11- TO STA. 16+83 -Y11- RT
FROM STA. 20+50 -Y10- TO STA. 21+50 -Y10- LT
FROM STA. 23+00 -Y10- TO STA. 25+32 -Y10- LT



FROM STA. 179+50 -L- TO STA. 181+60 -L- LT
FROM STA. 186+62 -L- TO STA. 188+50 -L- LT

END TIP PROJECT U-5312

-L- STA. 188+63.29



Place Matting for Erosion Control
on Slope as Work Allows.
Sta. 182+50 to Sta. 183+50 -L- LT
Sta. 181+00 to Sta. 183+00 -L- RT
Sta. 10+54 to Sta. 12+50 -Y10- LT

NOTE:
UTILIZE FABRIC INSERT INLET PROTECTION DEVICES IN LIEU OF
ROCK INLET SEDIMENT TRAPS, TYPE-C AS DIRECTED TO AVOID
IMPOUNDMENT OF RUNOFF IN ROADWAY OPEN TO TRAFFIC.

