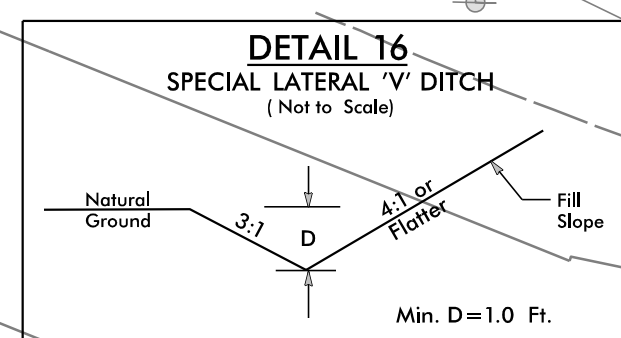
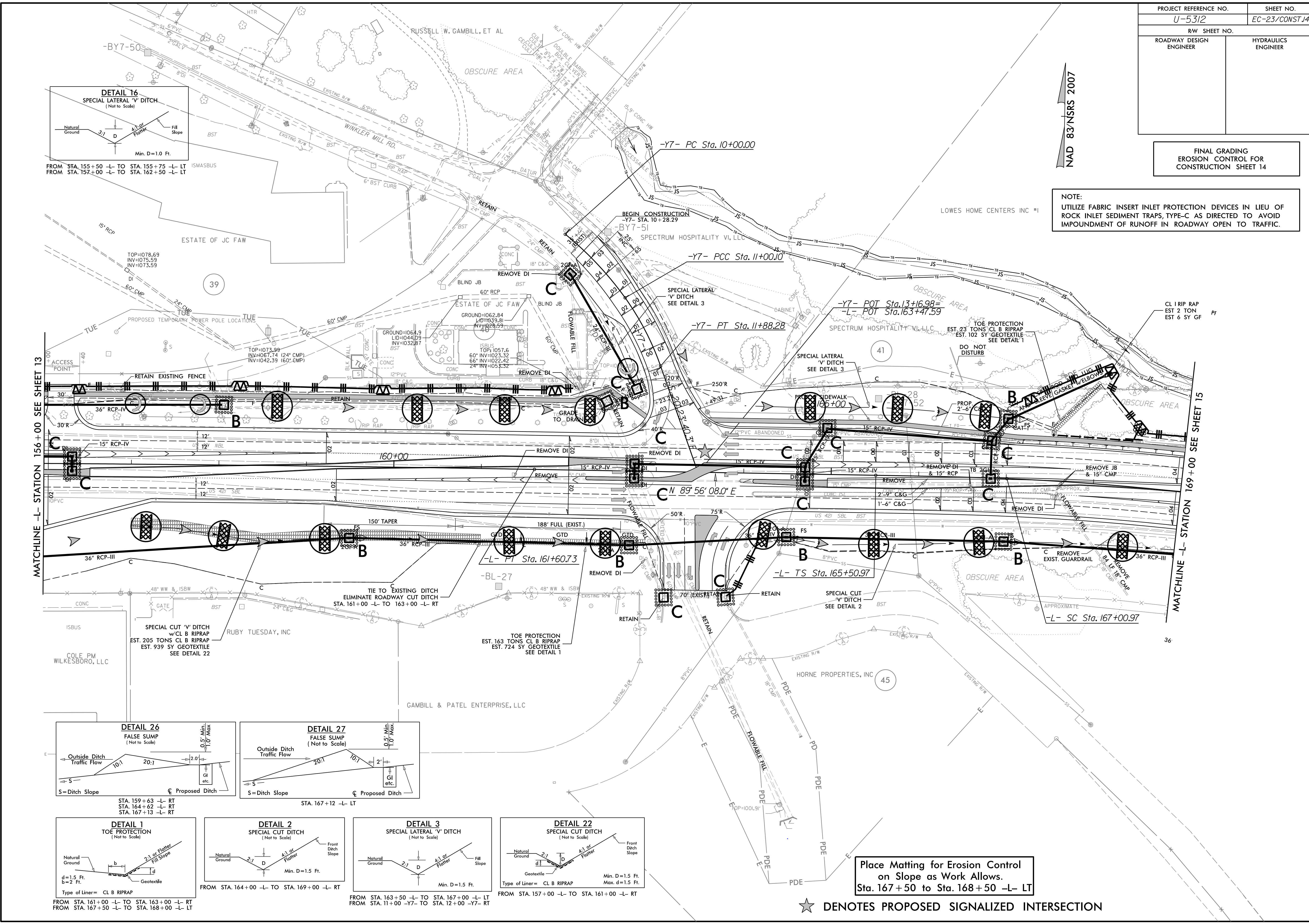


PROJECT REFERENCE NO.	SHEET NO.
U-5312	EC-23/CONST.14
RW SHEET NO.	
ROADWAY DESIGN ENGINEER	HYDRAULICS ENGINEER

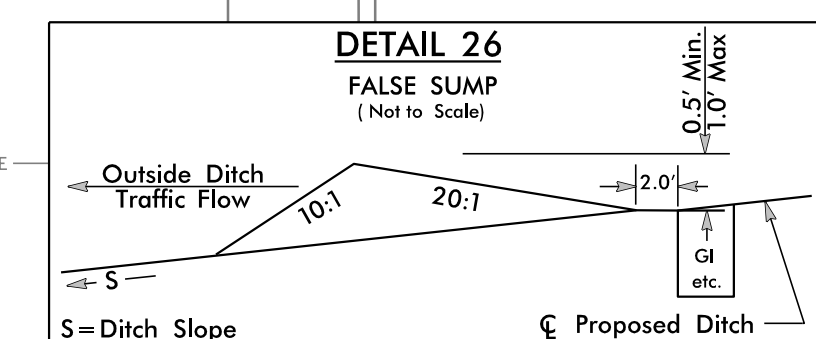
FINAL GRADING
EROSION CONTROL FOR
CONSTRUCTION SHEET 14

NOTE:
UTILIZE FABRIC INSERT INLET PROTECTION DEVICES IN LIEU OF
ROCK INLET SEDIMENT TRAPS, TYPE-C AS DIRECTED TO AVOID
IMPOUNDMENT OF RUNOFF IN ROADWAY OPEN TO TRAFFIC.

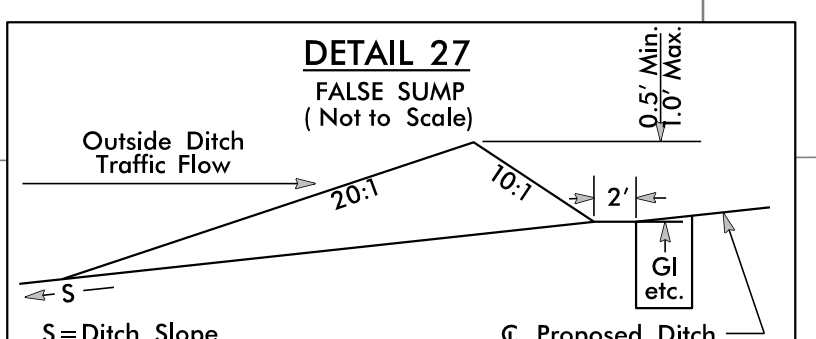
NAD 83/NSRS 2007



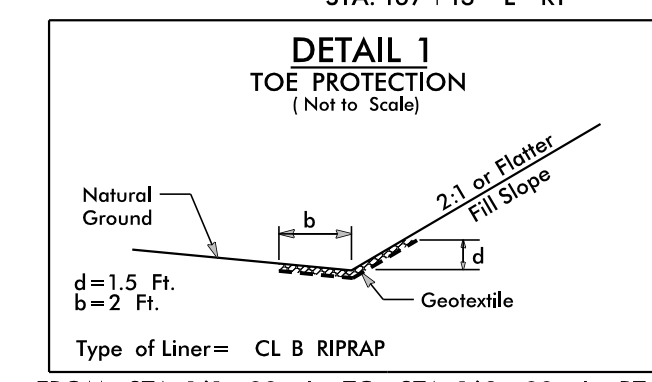
FROM STA. 155+50 -L- TO STA. 155+75 -L- LT
FROM STA. 157+00 -L- TO STA. 162+50 -L- LT



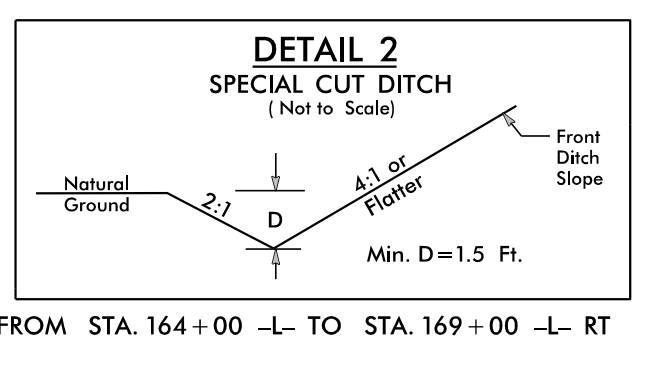
STA. 159+63 -L- RT
STA. 164+62 -L- RT
STA. 167+13 -L- RT



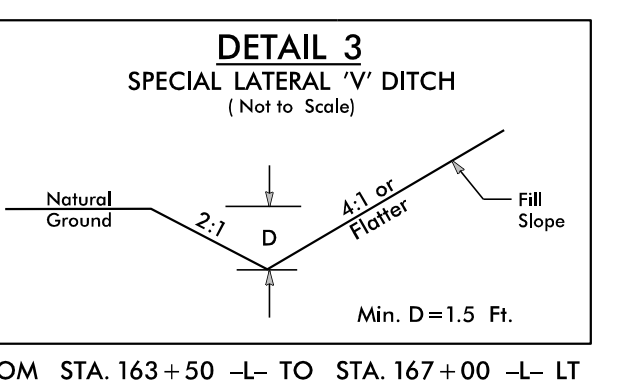
STA. 167+12 -L- LT



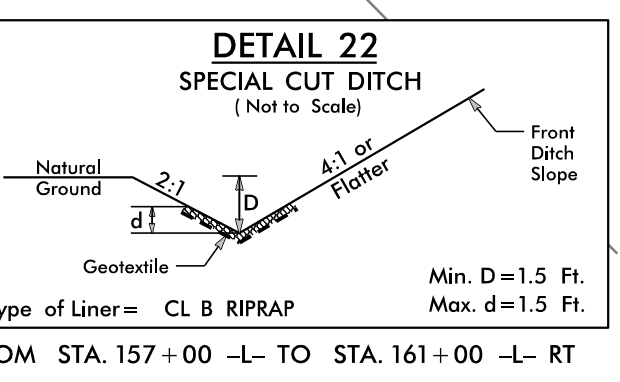
FROM STA. 161+00 -L- TO STA. 163+00 -L- RT
FROM STA. 167+50 -L- TO STA. 168+00 -L- LT



FROM STA. 164+00 -L- TO STA. 169+00 -L- RT



FROM STA. 163+50 -L- TO STA. 167+00 -L- LT
FROM STA. 11+00 -Y7- TO STA. 12+00 -Y7- RT



FROM STA. 157+00 -L- TO STA. 161+00 -L- RT

Place Matting for Erosion Control
on Slope as Work Allows.
Sta. 167+50 to Sta. 168+50 -L- LT

★ DENOTES PROPOSED SIGNALIZED INTERSECTION