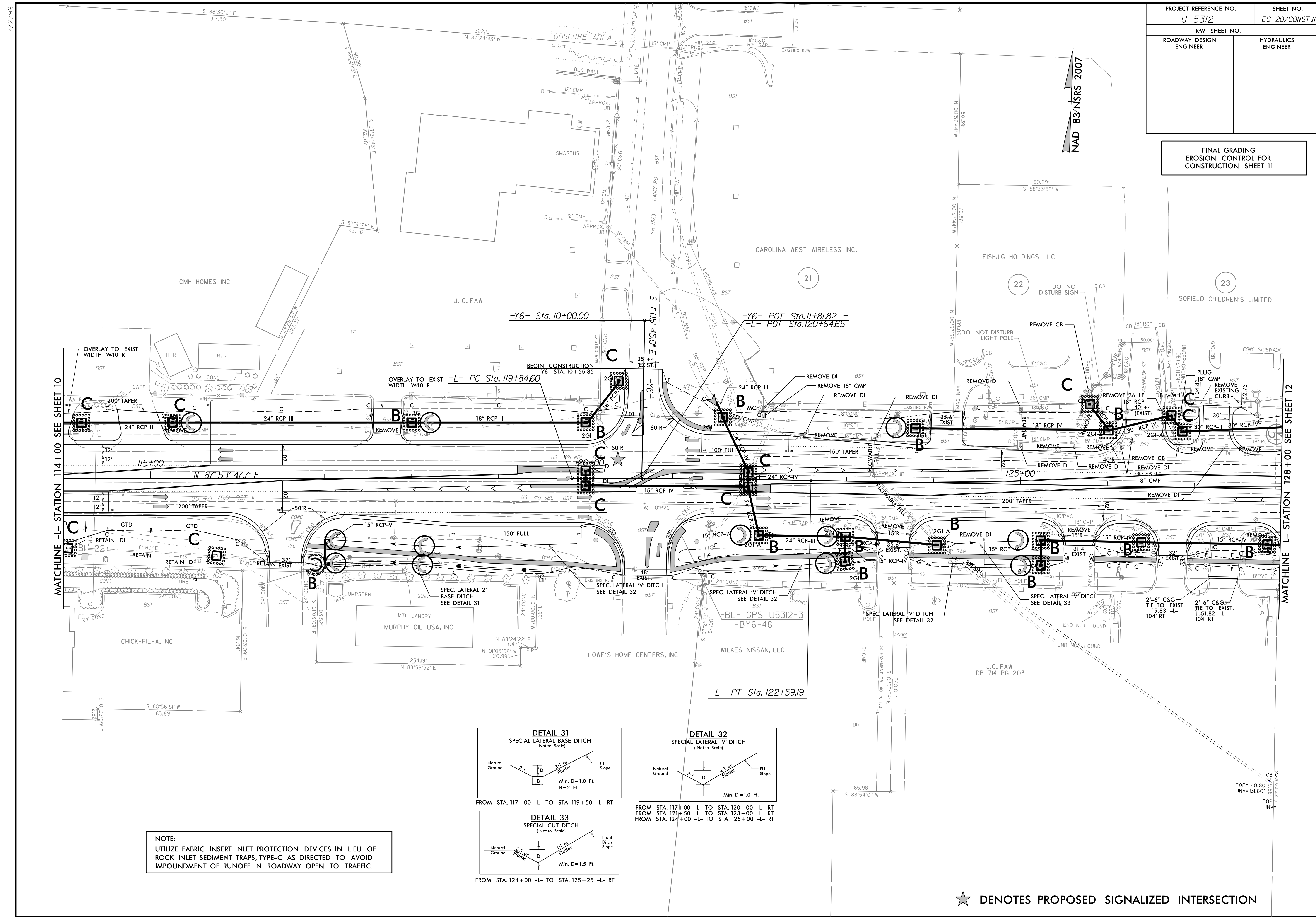


PROJECT REFERENCE NO. U-5312	SHEET NO. EC-20/CONST.II
RW SHEET NO.	
ROADWAY DESIGN ENGINEER	HYDRAULICS ENGINEER

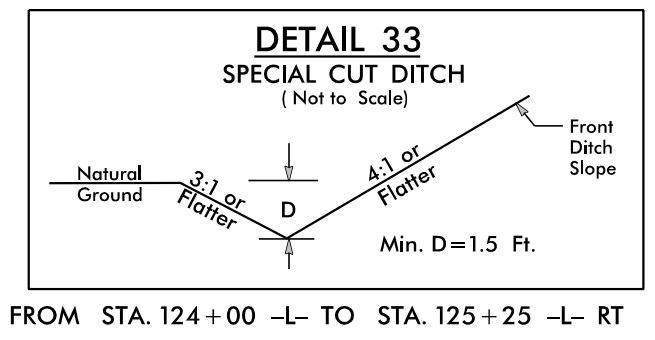
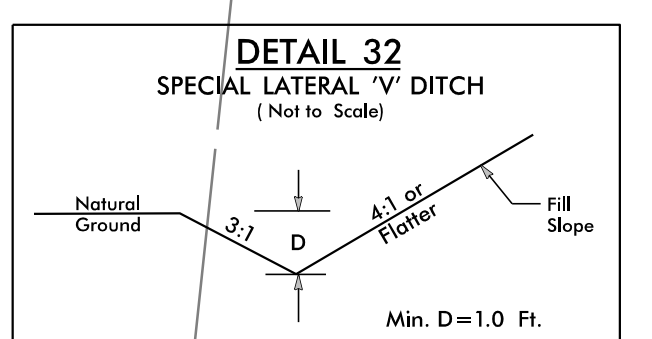
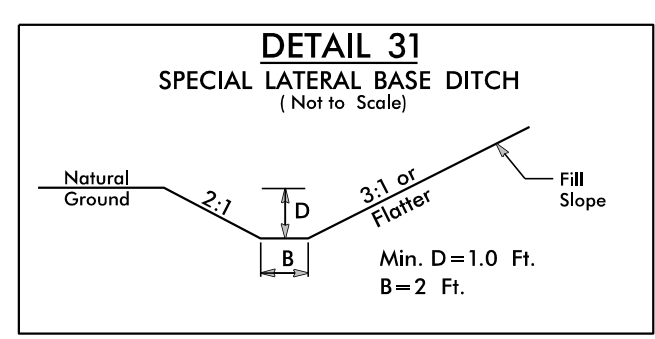
FINAL GRADING
EROSION CONTROL FOR
CONSTRUCTION SHEET 11



MATCHLINE -L- STATION 114+00 SEE SHEET 10

MATCHLINE -L- STATION 128+00 SEE SHEET 12

NOTE:
UTILIZE FABRIC INSERT INLET PROTECTION DEVICES IN LIEU OF ROCK INLET SEDIMENT TRAPS, TYPE-C AS DIRECTED TO AVOID IMPOUNDMENT OF RUNOFF IN ROADWAY OPEN TO TRAFFIC.



★ DENOTES PROPOSED SIGNALIZED INTERSECTION