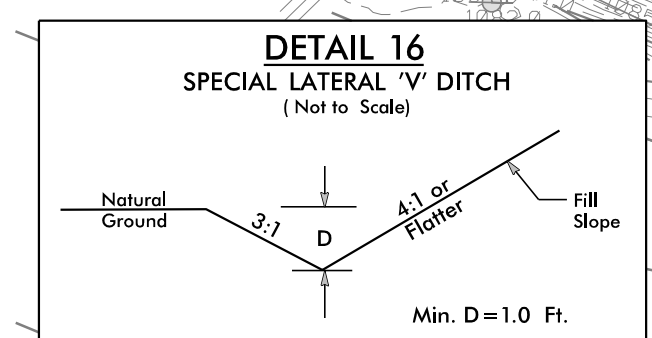


PROJECT REFERENCE NO.	SHEET NO.
U-5312	EC-12/CONST.14
RW SHEET NO.	
ROADWAY DESIGN ENGINEER	HYDRAULICS ENGINEER

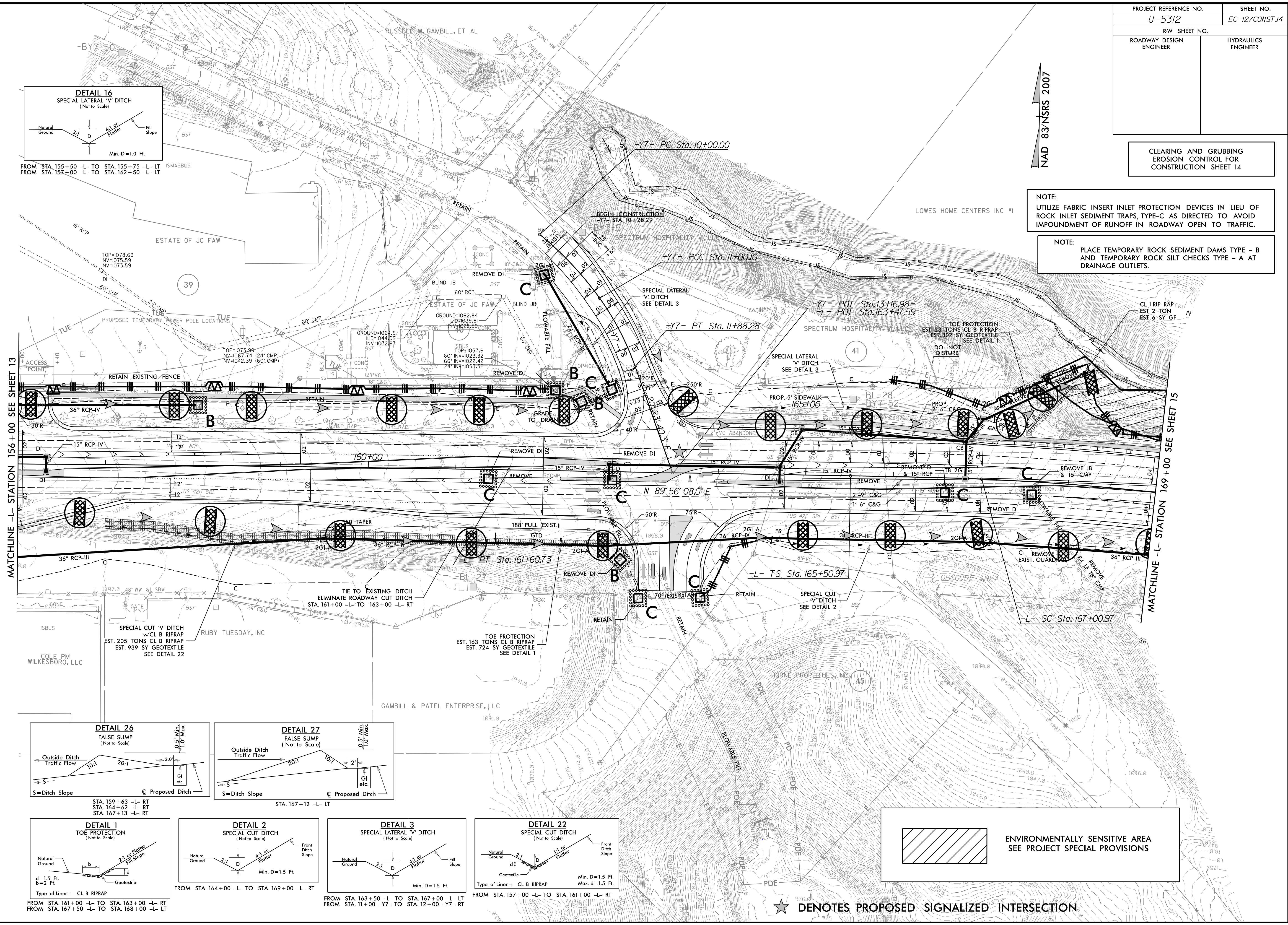
CLEARING AND GRUBBING  
EROSION CONTROL FOR  
CONSTRUCTION SHEET 14

NOTE:  
UTILIZE FABRIC INSERT INLET PROTECTION DEVICES IN LIEU OF  
ROCK INLET SEDIMENT TRAPS, TYPE-C AS DIRECTED TO AVOID  
IMPOUNDMENT OF RUNOFF IN ROADWAY OPEN TO TRAFFIC.

NOTE:  
PLACE TEMPORARY ROCK SEDIMENT DAMS TYPE - B  
AND TEMPORARY ROCK SILT CHECKS TYPE - A AT  
DRAINAGE OUTLETS.

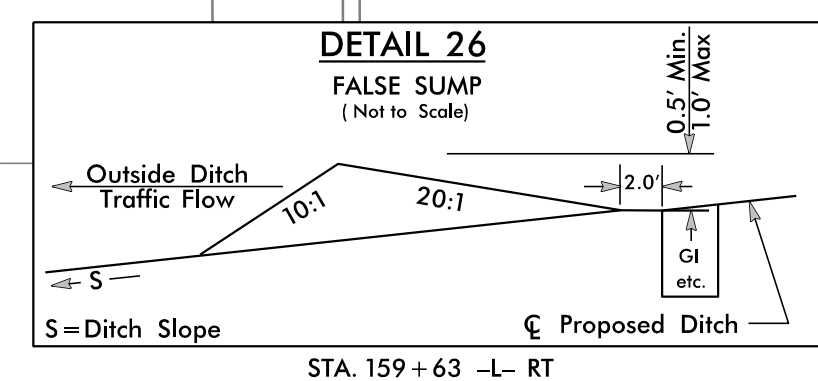


FROM STA. 155+50 -L- TO STA. 155+75 -L- LT  
FROM STA. 157+00 -L- TO STA. 162+50 -L- LT

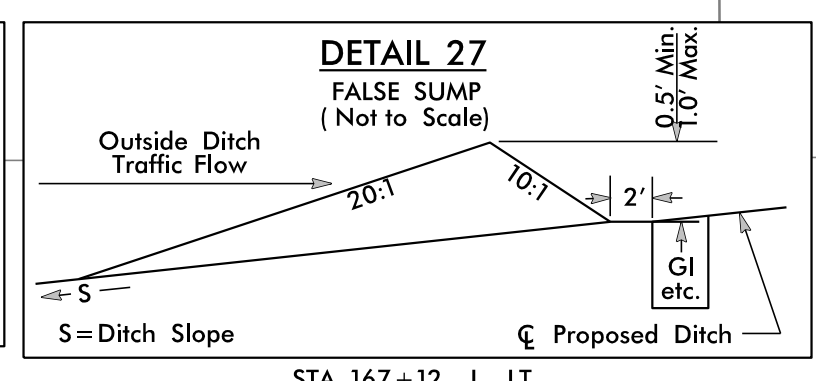


MATCHLINE -L- STATION 156+00 SEE SHEET 13

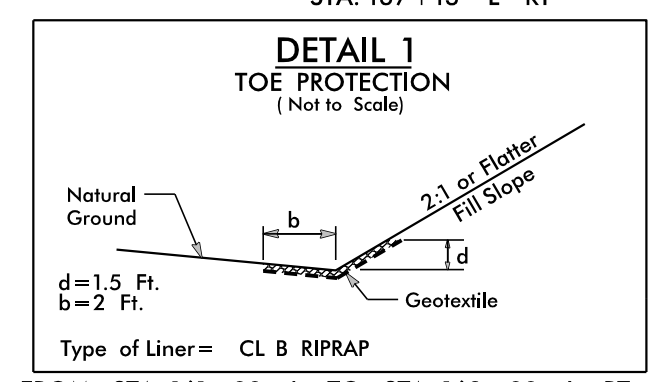
MATCHLINE -L- STATION 169+00 SEE SHEET 15



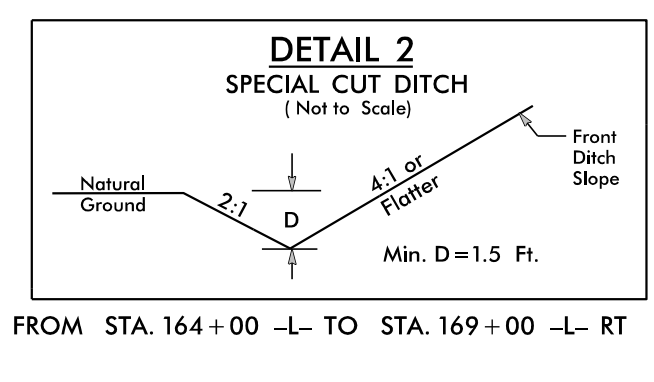
STA. 159+63 -L- RT  
STA. 164+62 -L- RT  
STA. 167+13 -L- RT



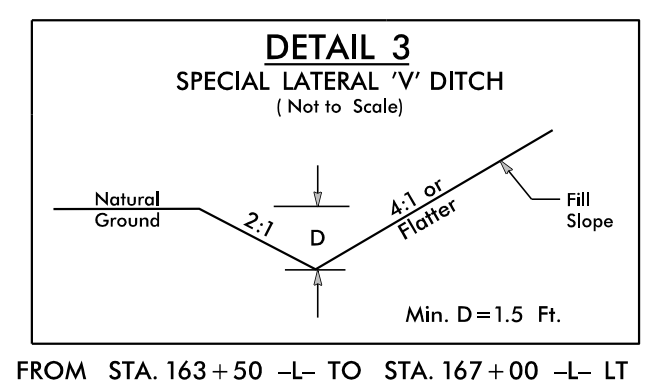
STA. 167+12 -L- LT



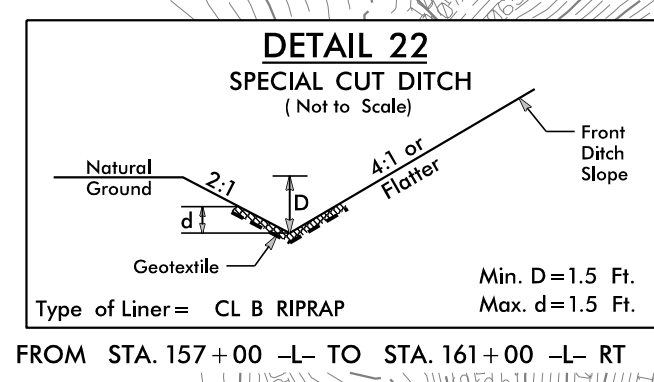
FROM STA. 161+00 -L- TO STA. 163+00 -L- RT  
FROM STA. 167+50 -L- TO STA. 168+00 -L- LT



FROM STA. 164+00 -L- TO STA. 169+00 -L- RT



FROM STA. 163+50 -L- TO STA. 167+00 -L- LT  
FROM STA. 11+00 -Y7- TO STA. 12+00 -Y7- RT



FROM STA. 157+00 -L- TO STA. 161+00 -L- RT

ENVIRONMENTALLY SENSITIVE AREA  
SEE PROJECT SPECIAL PROVISIONS

★ DENOTES PROPOSED SIGNALIZED INTERSECTION