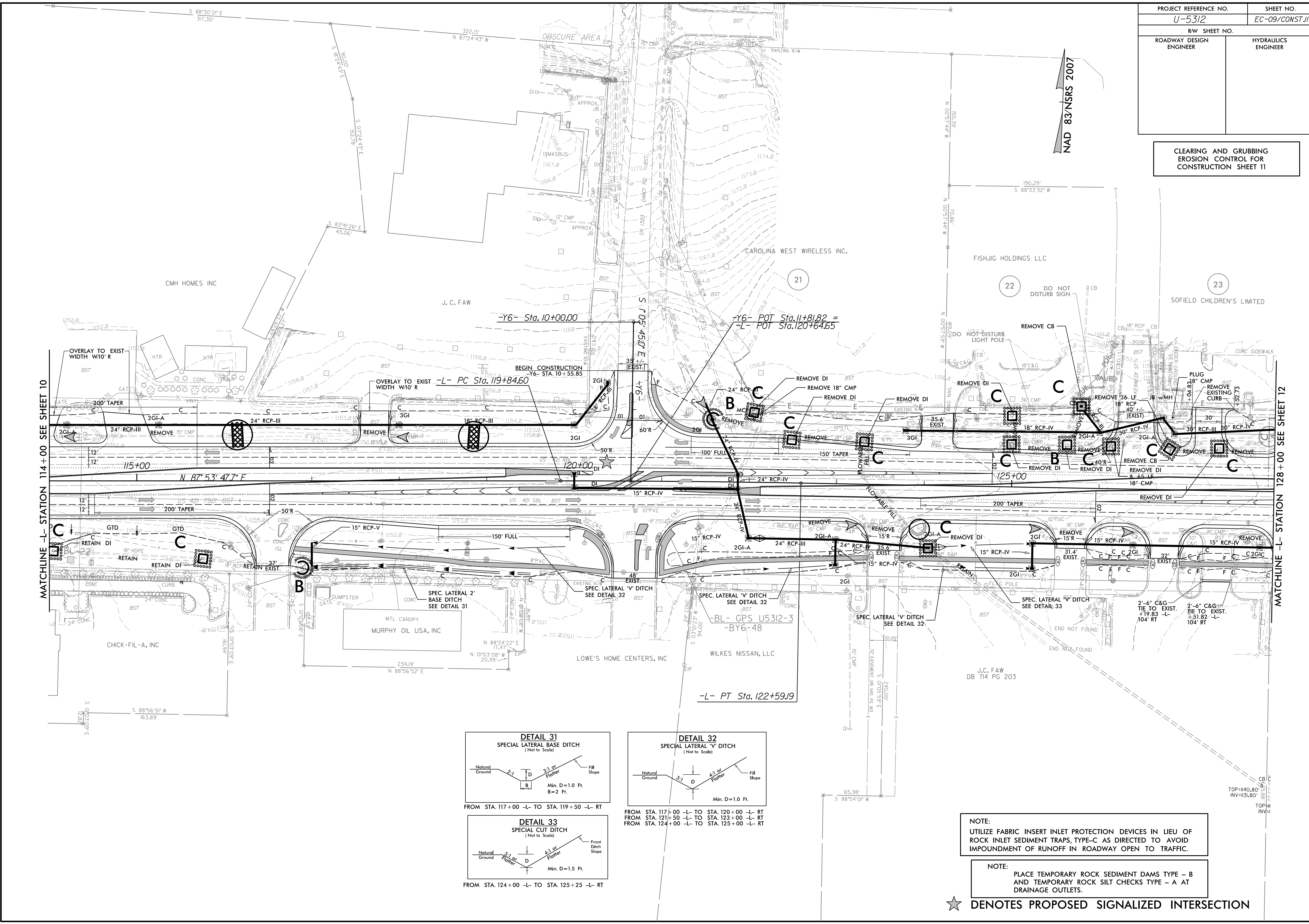


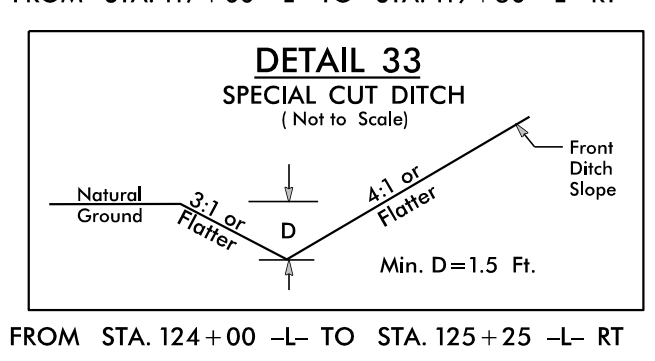
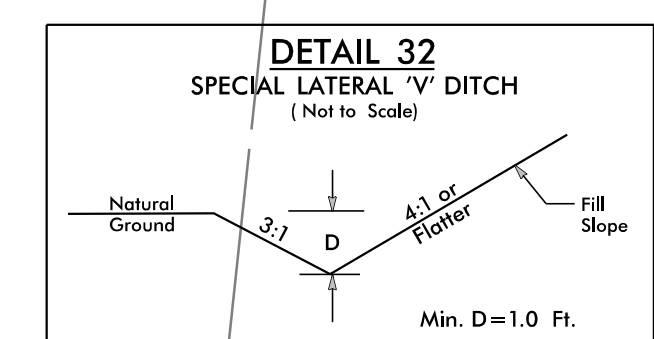
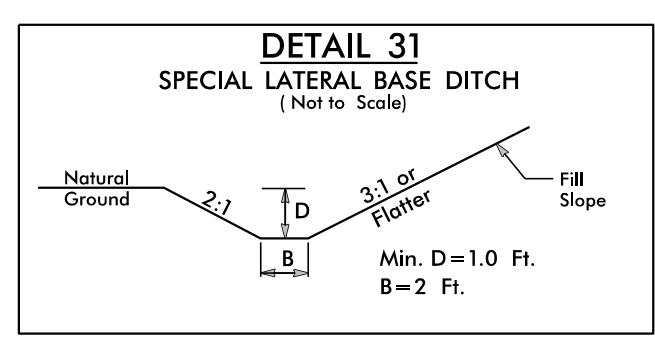
|                         |                     |
|-------------------------|---------------------|
| PROJECT REFERENCE NO.   | SHEET NO.           |
| U-5312                  | EC-09/CONST.II      |
| RW SHEET NO.            |                     |
| ROADWAY DESIGN ENGINEER | HYDRAULICS ENGINEER |

CLEARING AND GRUBBING  
EROSION CONTROL FOR  
CONSTRUCTION SHEET 11



MATCHLINE -L- STATION 114+00 SEE SHEET 10

MATCHLINE -L- STATION 128+00 SEE SHEET 12



NOTE:  
UTILIZE FABRIC INSERT INLET PROTECTION DEVICES IN LIEU OF  
ROCK INLET SEDIMENT TRAPS, TYPE-C AS DIRECTED TO AVOID  
IMPOUNDMENT OF RUNOFF IN ROADWAY OPEN TO TRAFFIC.

NOTE:  
PLACE TEMPORARY ROCK SEDIMENT DAMS TYPE - B  
AND TEMPORARY ROCK SILT CHECKS TYPE - A AT  
DRAINAGE OUTLETS.

★ DENOTES PROPOSED SIGNALIZED INTERSECTION