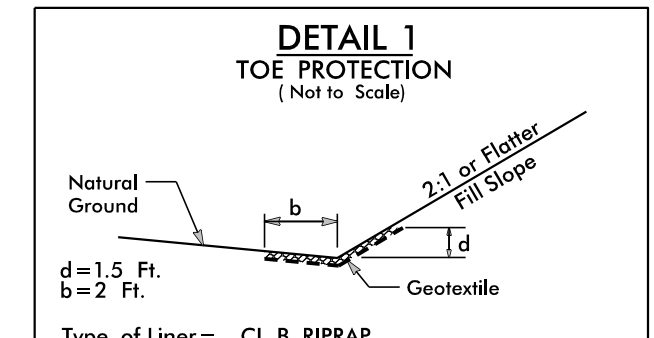
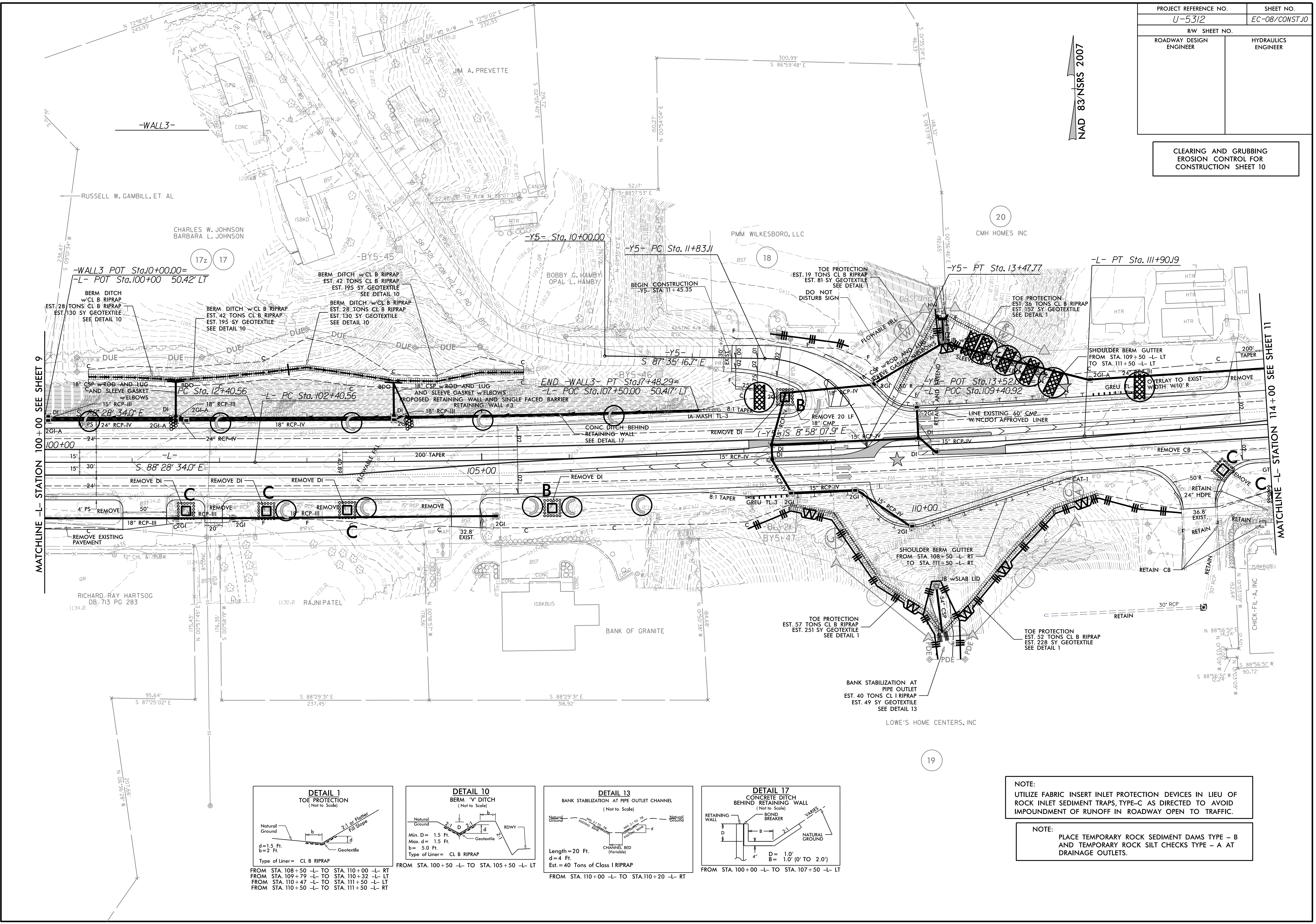


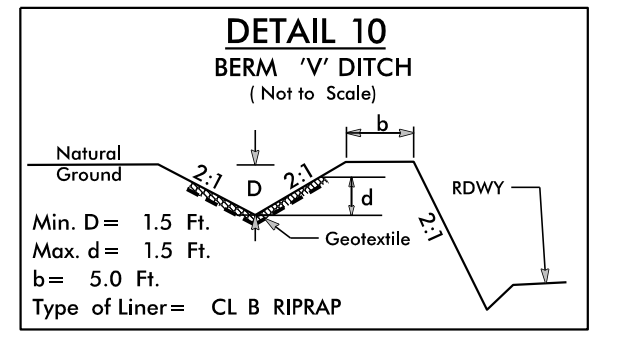
PROJECT REFERENCE NO.	SHEET NO.
U-5312	EC-08/CONST.10
RW SHEET NO.	
ROADWAY DESIGN ENGINEER	HYDRAULICS ENGINEER

CLEARING AND GRUBBING  
EROSION CONTROL FOR  
CONSTRUCTION SHEET 10

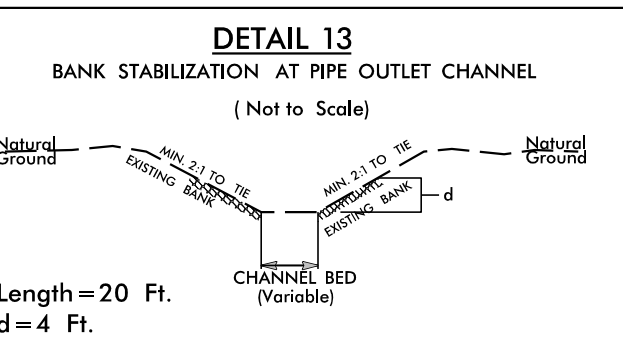
NAD 83/NSRS 2007



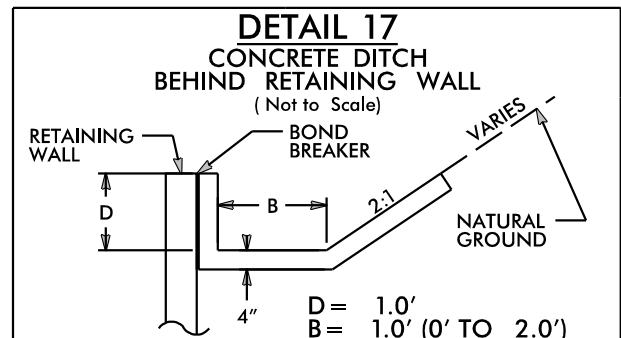
FROM STA. 108+50 -L- TO STA. 110+00 -L- RT  
FROM STA. 109+79 -L- TO STA. 110+32 -L- LT  
FROM STA. 110+47 -L- TO STA. 111+50 -L- LT  
FROM STA. 110+50 -L- TO STA. 111+50 -L- RT



FROM STA. 100+50 -L- TO STA. 105+50 -L- LT



FROM STA. 110+00 -L- TO STA. 110+20 -L- RT



FROM STA. 100+00 -L- TO STA. 107+50 -L- LT

NOTE:  
UTILIZE FABRIC INSERT INLET PROTECTION DEVICES IN LIEU OF ROCK INLET SEDIMENT TRAPS, TYPE-C AS DIRECTED TO AVOID IMPOUNDMENT OF RUNOFF IN ROADWAY OPEN TO TRAFFIC.

NOTE:  
PLACE TEMPORARY ROCK SEDIMENT DAMS TYPE - B AND TEMPORARY ROCK SILT CHECKS TYPE - A AT DRAINAGE OUTLETS.