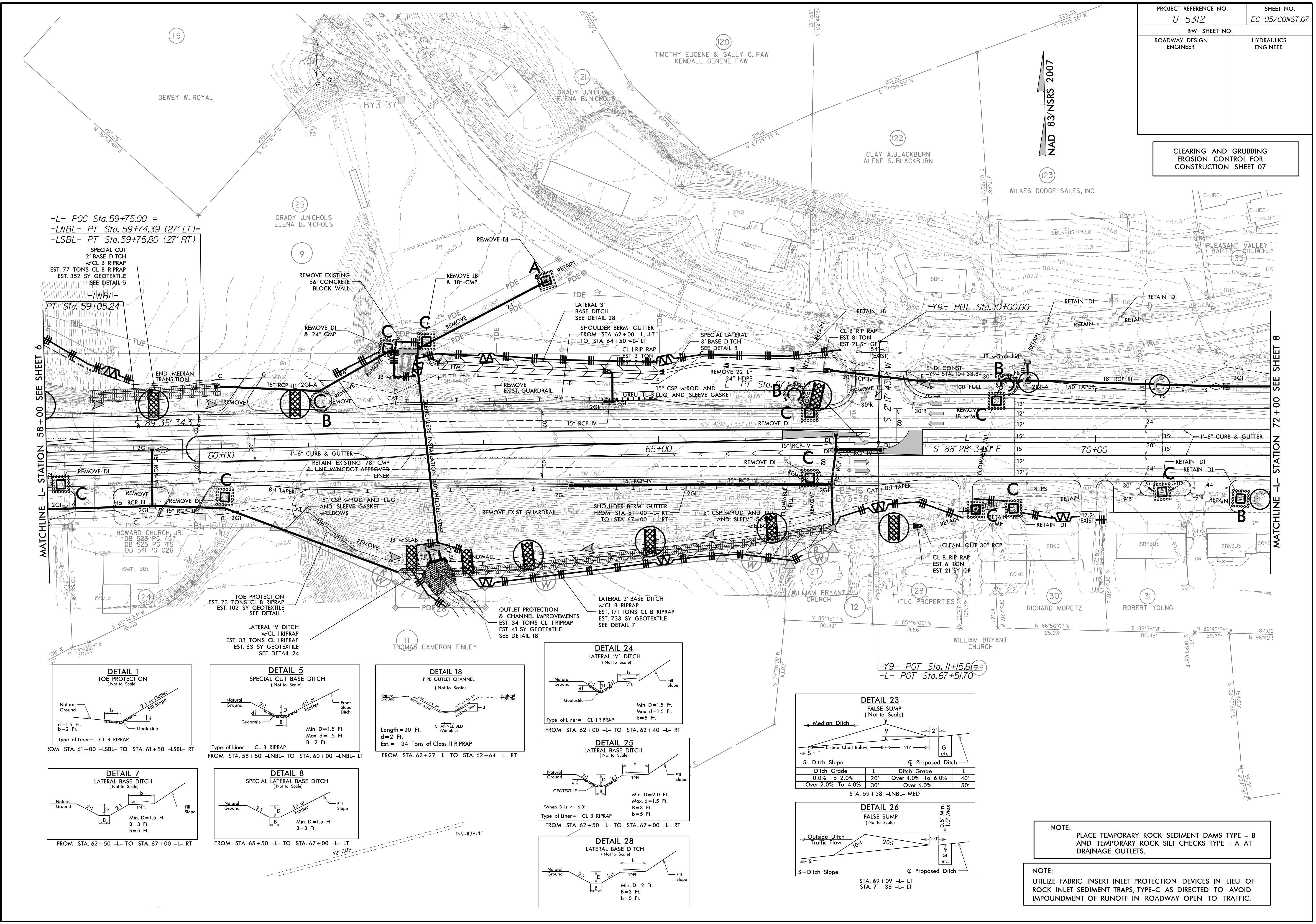


**CLEARING AND GRUBBING
EROSION CONTROL FOR
CONSTRUCTION SHEET 07**



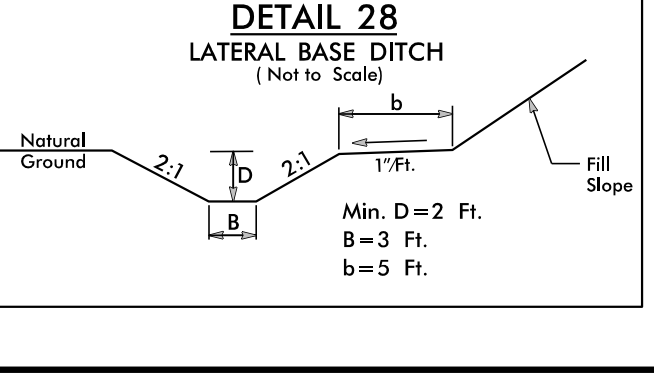
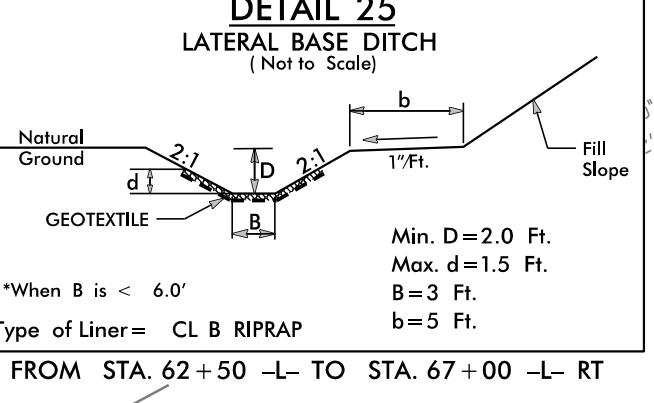
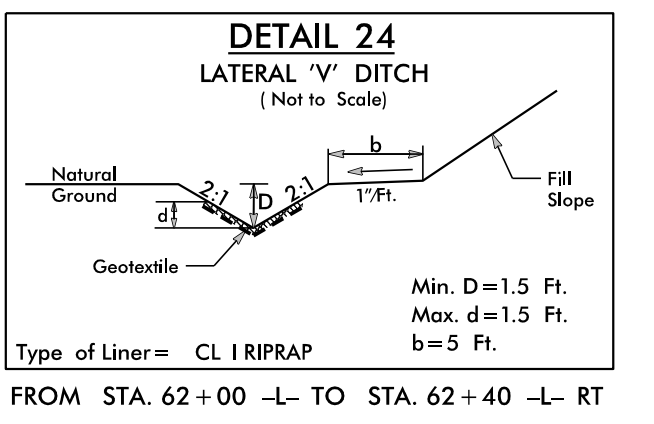
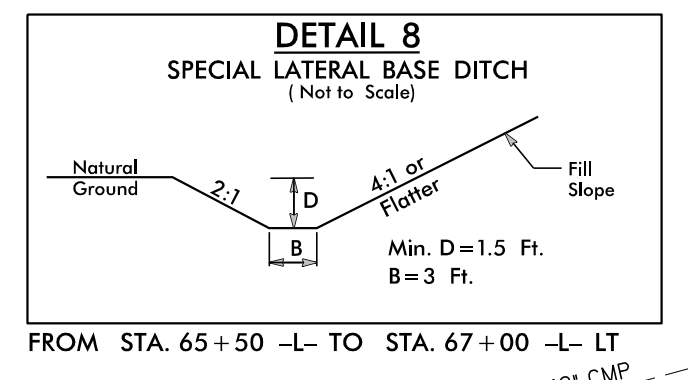
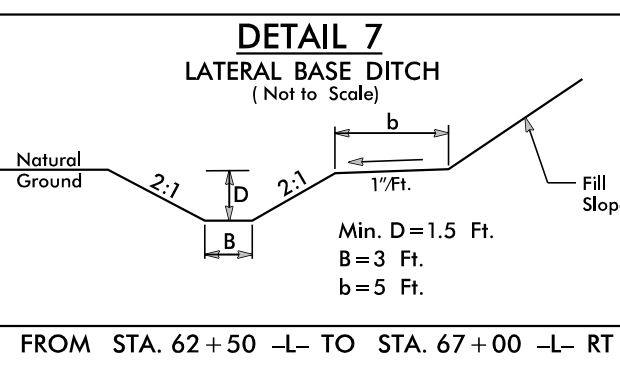
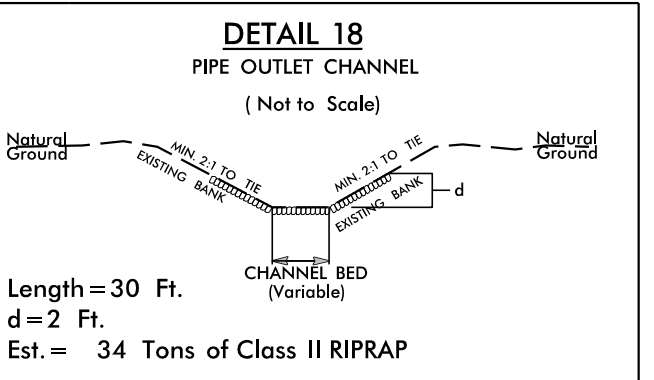
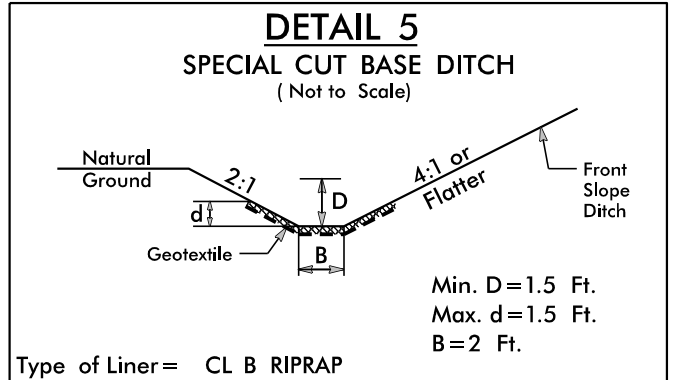
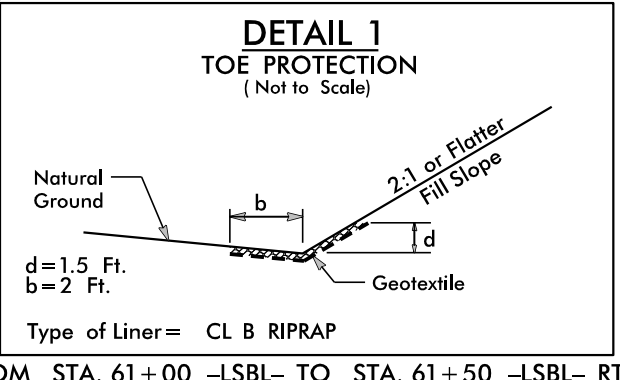
-L- POC Sta. 59+75.00 =
-LNBL- PT Sta. 59+74.39 (27' LT) =
-LSBL- PT Sta. 59+75.80 (27' RT)

SPECIAL CUT
w/CL B RIPRAP
EST. 77 TONS CL B RIPRAP
EST. 352 SY GEOTEXTILE
SEE DETAIL 5

-LNBL-
PT Sta. 59+05.24

MATCHLINE -L- STATION 58+00 SEE SHEET 6

MATCHLINE -L- STATION 72+00 SEE SHEET 8



DETAIL 23
FALSE SUMP
(Not to Scale)

Ditch Grade	L	Ditch Grade	L
0.0% To 2.0%	20'	Over 4.0% To 6.0%	40'
Over 2.0% To 4.0%	30'	Over 6.0%	50'

STA. 59+38 -LNBL- MED

DETAIL 26
FALSE SUMP
(Not to Scale)

Ditch Grade	L	Ditch Grade	L
0.0% To 2.0%	20'	Over 4.0% To 6.0%	40'
Over 2.0% To 4.0%	30'	Over 6.0%	50'

STA. 69+09 -L- LT
STA. 71+38 -L- LT

NOTE:
PLACE TEMPORARY ROCK SEDIMENT DAMS TYPE - B
AND TEMPORARY ROCK SILT CHECKS TYPE - A AT
DRAINAGE OUTLETS.

NOTE:
UTILIZE FABRIC INSERT INLET PROTECTION DEVICES IN LIEU OF
ROCK INLET SEDIMENT TRAPS, TYPE-C AS DIRECTED TO AVOID
IMPOUNDMENT OF RUNOFF IN ROADWAY OPEN TO TRAFFIC.