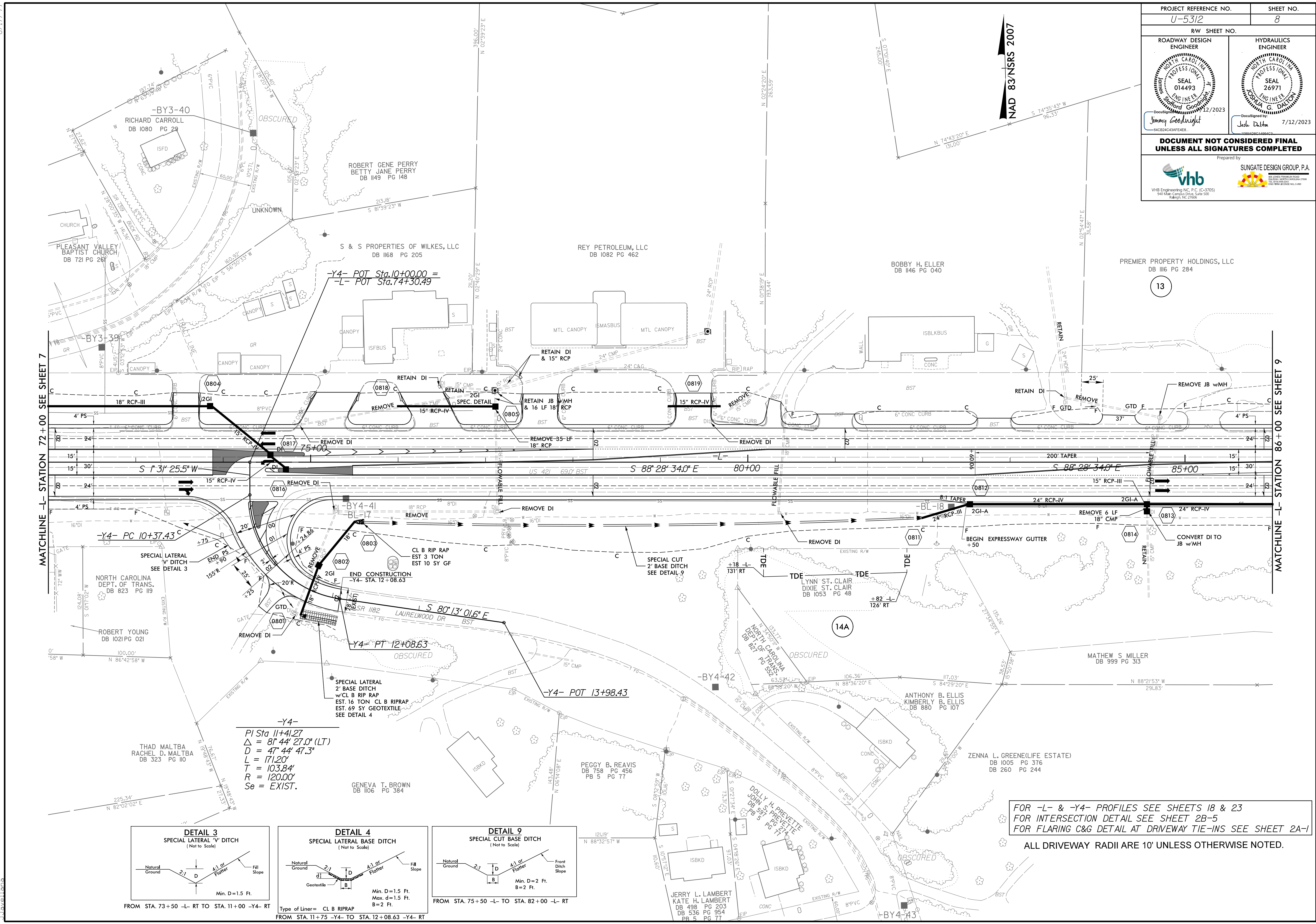


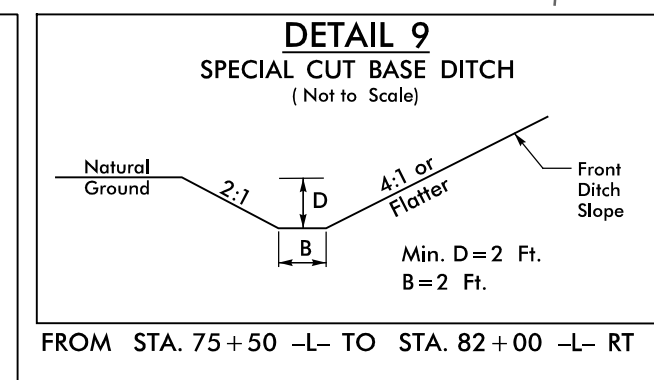
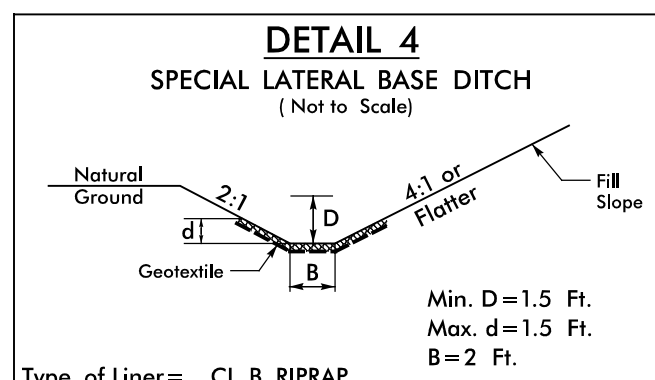
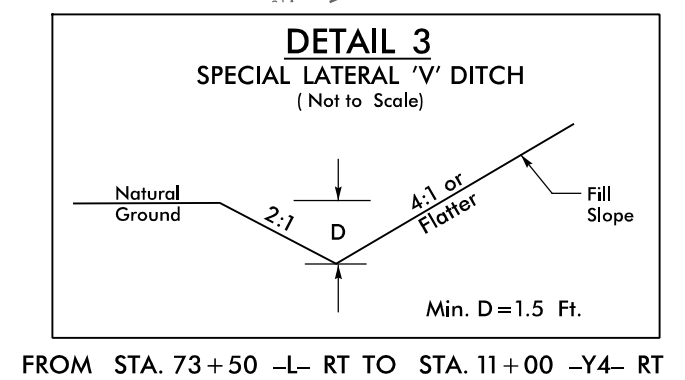
PROJECT REFERENCE NO. <b>U-5312</b>		SHEET NO. <b>8</b>	
RW SHEET NO.			
ROADWAY DESIGN ENGINEER		HYDRAULICS ENGINEER	
<p><b>DOCUMENT NOT CONSIDERED FINAL UNLESS ALL SIGNATURES COMPLETED</b></p> <p>Prepared by</p>			



MATCHLINE -L- STATION 72+00 SEE SHEET 7

MATCHLINE -L- STATION 86+00 SEE SHEET 9

**-Y4-**  
 $PI\ Sta\ 11+41.27$   
 $\Delta = 81\ 44\ 27.0\ (LT)$   
 $D = 47\ 44\ 47.3'$   
 $L = 171.20'$   
 $T = 103.84'$   
 $R = 120.00'$   
 $Se = EXIST.$



FOR -L- & -Y4- PROFILES SEE SHEETS 18 & 23  
 FOR INTERSECTION DETAIL SEE SHEET 2B-5  
 FOR FLARING C&G DETAIL AT DRIVEWAY TIE-INS SEE SHEET 2A-1  
 ALL DRIVEWAY RADII ARE 10' UNLESS OTHERWISE NOTED.

8/17/99  
 7/14/2023  
 16312.dwg  
 ps-h08.dgn