

5/14/99

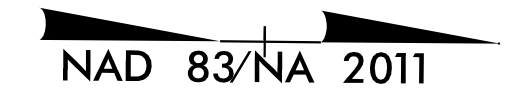
FINAL
EROSION CONTROL FOR
CONSTRUCTION SHEET 22

NOTES: ANY DEVIATION FROM OPTIONS GIVEN WILL
REQUIRE PRIOR APPROVAL BY ENGINEER.

ADDITIONAL EROSION CONTROL DEVICES MAY
NEED TO BE INSTALLED AS DIRECTED BY THE
ENGINEER.

Kimley » Horn
P.O. BOX 33068 • RALEIGH, N.C. 27636-3068

PROJECT REFERENCE NO.	SHEET NO.
R-5705A	EC-42/CONST.22
RW SHEET NO. 22	
ROADWAY DESIGN ENGINEER	HYDRAULICS ENGINEER



REVISIONS

DAVID GARDNER
DB 1085 PG 174
PC*1PG 253

TRACY PERRY
DB 802 PG 325

116
GORDAN SARTIN
DB 232 PG 153
MB 2005 PG 923

119
GORDON SARTIN
DB 568 PG 60
MB 2005 PG 923

117
DAVID GARDNER
DB 3103 PG 553

90
CLAY GARDNER
DB 2983 PG 694
MB 2005 PG 923



FINAL
EROSION CONTROL FOR
CONSTRUCTION SHEET 23

NOTES: ANY DEVIATION FROM OPTIONS GIVEN WILL
REQUIRE PRIOR APPROVAL BY ENGINEER.

ADDITIONAL EROSION CONTROL DEVICES MAY
NEED TO BE INSTALLED AS DIRECTED BY THE
ENGINEER.

PROJECT REFERENCE NO. R-5705A		SHEET NO. EC-43/CONST.23
RW SHEET NO. 24		
ROADWAY DESIGN ENGINEER	HYDRAULICS ENGINEER	

Kimley » Horn
P.O. BOX 33068 • RALEIGH, N.C. 27636-3068

JAMES JOHNSON
DB 1969 PG 136
MB 2014 PG 66

KENNETH EDWARDS
DB 3551 PG 561
MB 2004 PG 738

NCD CONTRACTING LLC
DB 3852 PG 423
PB 2021 PG 563

NCD CONTRACTING LLC
DB 4062 PG 344

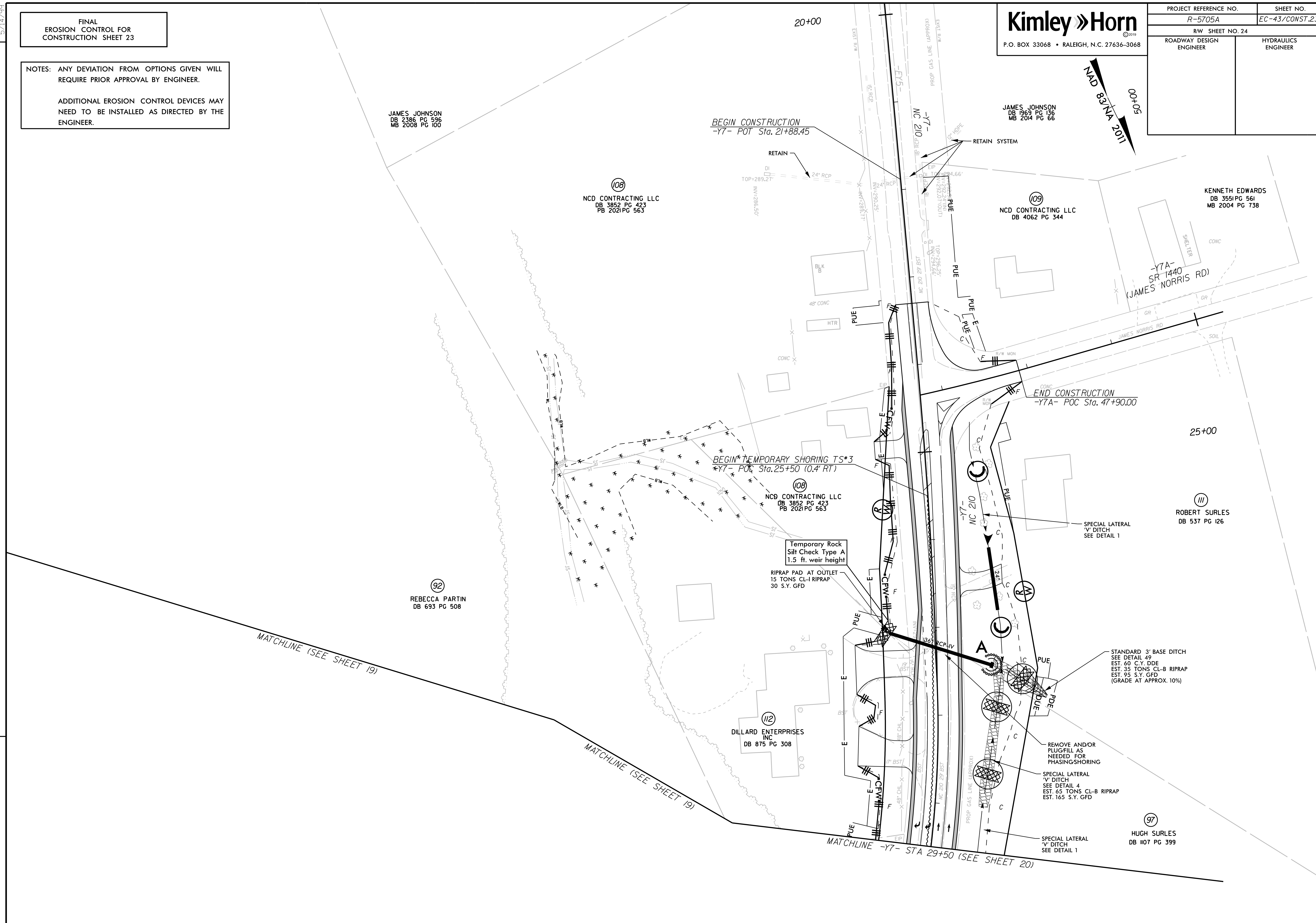
REBECCA PARTIN
DB 693 PG 508

DILLARD ENTERPRISES
INC
DB 875 PG 308

ROBERT SURLES
DB 537 PG 126

HUGH SURLES
DB 1107 PG 399

REVISIONS



MATCHLINE (SEE SHEET 19)

MATCHLINE (SEE SHEET 19)

MATCHLINE -Y7- STA 29+50 (SEE SHEET 20)