


TIP NO. R-5705A	SHEET NO. PMP-1
APPROVED: _____	
DATE: _____	
SEAL	
	
DOCUMENT NOT CONSIDERED FINAL UNLESS ALL SIGNATURES COMPLETED	

**STATE OF NORTH CAROLINA
DEPARTMENT OF TRANSPORTATION**

**PAVEMENT MARKING PLAN
HARNETT COUNTY**

LOCATION: NC 55 FROM JUST SOUTH OF SR 1532 (OAK GROVE CHURCH ROAD) TO NC 210

TIP PROJECT: R-5705A

CONTRACT: C204785

INDEX

SHEET NO.	DESCRIPTION
PMP-1	PAVEMENT MARKING PLAN TITLE AND SCHEDULE SHEET
PMP-2 THRU PMP-20	PAVEMENT MARKING DETAIL

ROADWAY STANDARD DRAWING

THE FOLLOWING ROADWAY STANDARDS AS APPEAR IN "ROADWAY STANDARD DRAWINGS" - PROJECT SERVICES UNIT - N.C. DEPARTMENT OF TRANSPORTATION - RALEIGH, N.C., DATED JANUARY 2018 ARE APPLICABLE TO THIS PROJECT AND BY REFERENCE HEREBY ARE CONSIDERED A PART OF THESE PLANS:

STD. NO.	TITLE
1205.01	PAVEMENT MARKINGS - LINE TYPES AND OFFSETS
1205.02	PAVEMENT MARKINGS - TWO-LANE AND MULTILANE ROADWAYS
1205.04	PAVEMENT MARKINGS - INTERSECTIONS
1205.05	PAVEMENT MARKINGS - TURN LANES
1205.06	PAVEMENT MARKINGS - LANE DROPS
1205.08	PAVEMENT MARKINGS - SYMBOLS AND WORD MESSAGES
1205.09	PAVEMENT MARKINGS - PAINTED ISLANDS
1205.13	PAVEMENT MARKINGS - LANE REDUCTIONS
1205.15	PAVEMENT MARKINGS - SUPERSTREETS
1250.01	RAISED PAVEMENT MARKERS - INSTALLATION SPACING
1253.01	RAISED PAVEMENT MARKERS - SNOWPLOWABLE
1205D04	PAVEMENT MARKINGS - INTERSECTIONS
1264.01	OBJECT MARKERS - TYPES
1264.02	OBJECT MARKERS - INSTALLATION

PAVEMENT MARKING SCHEDULE

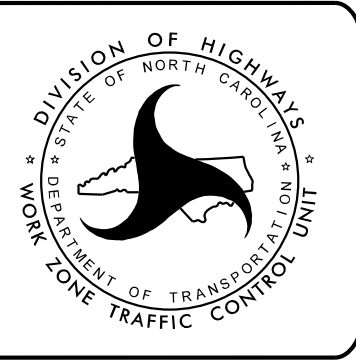
SYMBOL	DESCRIPTION
	FINAL PAVEMENT MARKINGS
T61	THERMOPLASTIC (24", 90 MILS) WHITE STOPBAR
	THERMOPLASTIC (4", 90 MILS)
T1	WHITE EDGELINE
T2	WHITE SOLID LANE LINE
T3	WHITE 10' SKIP
T4	WHITE 3' - 9'/SP MINI-SKIP
T5	WHITE 2' - 6'/SP MINI-SKIP
T10	YELLOW EDGELINE
T13	YELLOW DOUBLE CENTER
T14	YELLOW 2' - 6'/SP MINI-SKIP
	THERMOPLASTIC (8", 90 MILS)
T40	WHITE GORELINE
T43	WHITE SOLID LANE LINE
T44	WHITE 3' - 9'/SP MINI-SKIP
	THERMOPLASTIC (12", 90 MILS)
T51	WHITE DIAGONAL
T52	YELLOW DIAGONAL
	THERMOPLASTIC PAVEMENT MARKING SYMBOLS (90 MILS)
T70	LEFT TURN ARROW
T71	RIGHT TURN ARROW
T72	STRAIGHT ARROW
T77	U-TURN ARROW
T79	MERGE ARROW
	THERMOPLASTIC PAVEMENT MARKING SYMBOLS (90 MILS)
T100	ALPHANUMERIC CHARACTER
	SNOWPLOWABLE MARKER SYMBOLS
ME	YELLOW & YELLOW
MF	CRYSTAL & RED

GENERAL NOTES

- THE FOLLOWING GENERAL NOTES APPLY AT ALL TIMES FOR THE DURATION OF THE CONSTRUCTION PROJECT, EXCEPT WHEN OTHERWISE NOTED IN THE PLAN, OR DIRECTED BY THE ENGINEER.
- A) INSTALL PAVEMENT MARKINGS ON THE FINAL SURFACE AS FOLLOWS:
- | ROAD NAME | MARKING | MARKER |
|-----------|---------------|--------------|
| -L- | THERMOPLASTIC | SNOWPLOWABLE |
| -Y1- | THERMOPLASTIC | SNOWPLOWABLE |
| -Y2- | THERMOPLASTIC | SNOWPLOWABLE |
| -Y3- | THERMOPLASTIC | SNOWPLOWABLE |
| -Y4- | THERMOPLASTIC | SNOWPLOWABLE |
| -Y4A- | THERMOPLASTIC | SNOWPLOWABLE |
| -Y4B- | THERMOPLASTIC | SNOWPLOWABLE |
| -Y5- | THERMOPLASTIC | SNOWPLOWABLE |
| -Y5A- | THERMOPLASTIC | SNOWPLOWABLE |
| -Y6- | THERMOPLASTIC | SNOWPLOWABLE |
| -Y6A- | THERMOPLASTIC | SNOWPLOWABLE |
| -Y7- | THERMOPLASTIC | SNOWPLOWABLE |
| -Y7A- | THERMOPLASTIC | SNOWPLOWABLE |
| -Y7C- | THERMOPLASTIC | SNOWPLOWABLE |
| -Y7D- | THERMOPLASTIC | SNOWPLOWABLE |
- B) TIE PROPOSED PAVEMENT MARKING LINES TO EXISTING PAVEMENT MARKING LINES.
- C) REMOVE/REPLACE ANY CONFLICTING/DAMAGED PAVEMENT MARKINGS AND MARKERS.
- D) STOP BAR LOCATION AT NON-SIGNALIZED INTERSECTIONS MAY BE ADJUSTED AS DIRECTED BY THE ENGINEER.
- E) UNLESS OTHERWISE SPECIFIED, HEATED-IN-PLACE THERMOPLASTIC MAY BE USED IN LIEU OF EXTRUDED THERMOPLASTIC FOR ARROWS, STOP BARS, SYMBOLS, CHARACTERS AND DIAGONALS. IF HEATED-IN-PLACE IS USED, IT SHALL BE PAID FOR USING THE EXTRUDED THERMOPLASTIC PAY ITEM.

PLAN REVIEWED BY: N.C.D.O.T. SIGNING AND DELINEATION UNIT

AYMAN I. ALQUDWAH, P.E.	SIGNING & DELINEATION REGIONAL ENGINEER
DERRICK BEARD	SIGNING & DELINEATION PROJECT DESIGN ENGINEER

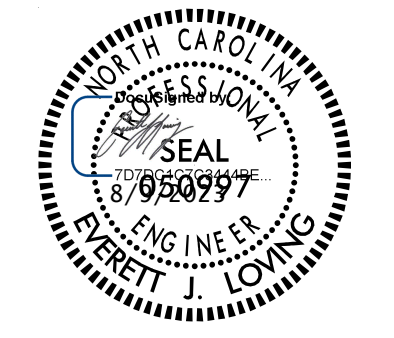


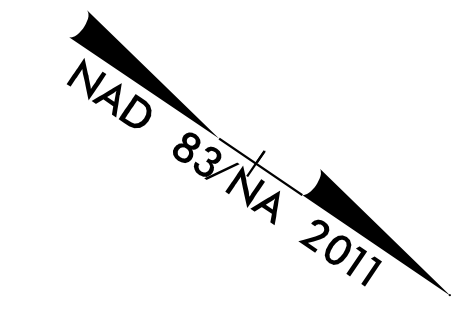
PLAN PREPARED BY: Kimley-Horn and Associates

EVERETT LOVING, P.E.	PROJECT DESIGN ENGINEER
MORGAN HOBSON, E.I.	DESIGNER

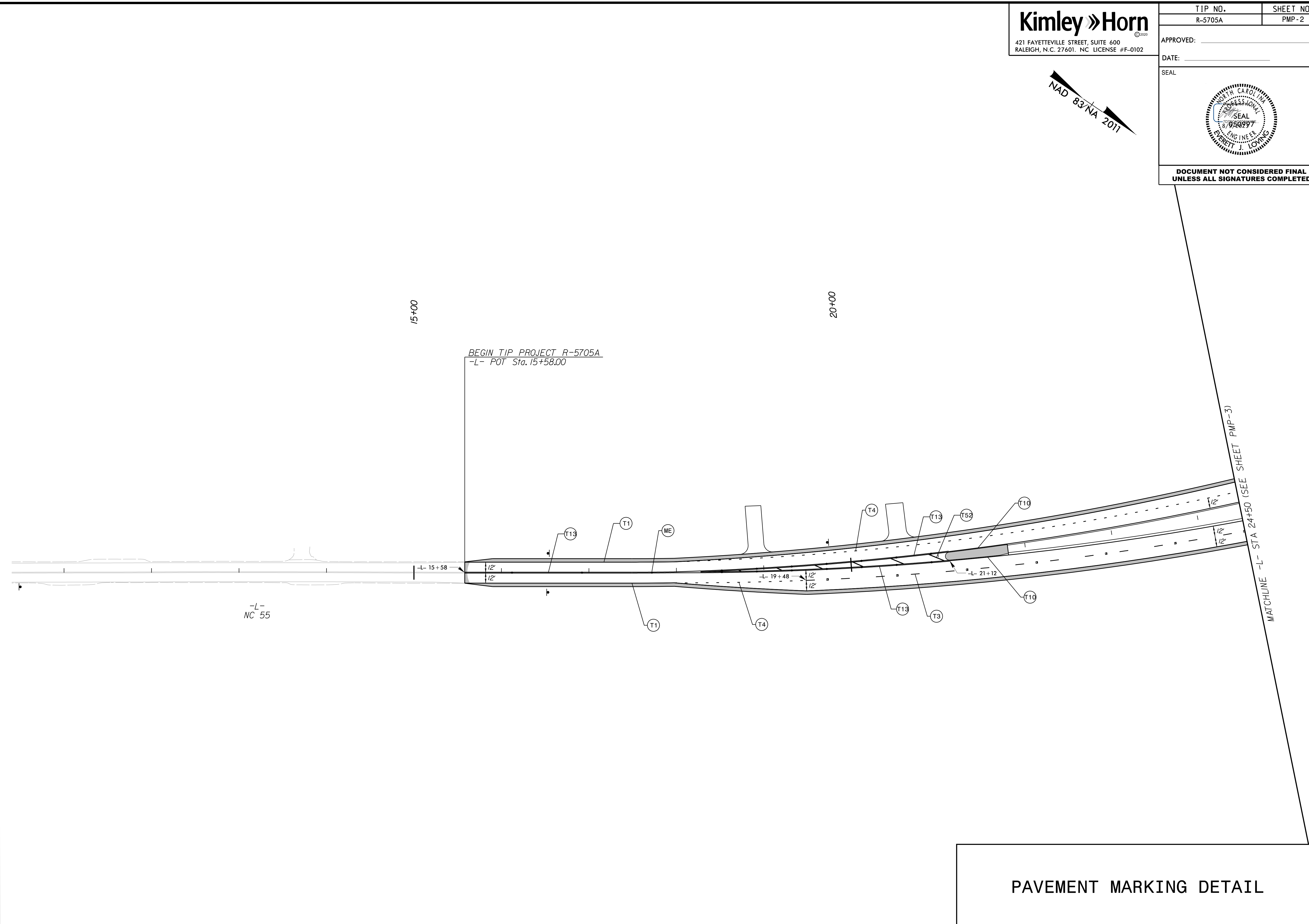
Kimley»Horn

Kimley » Horn
421 FAYETTEVILLE STREET, SUITE 600
RALEIGH, N.C. 27601. NC LICENSE #F-0102

TIP NO. R-5705A	SHEET NO. PMP-2
APPROVED: _____	
DATE: _____	
SEAL	
	
DOCUMENT NOT CONSIDERED FINAL UNLESS ALL SIGNATURES COMPLETED	

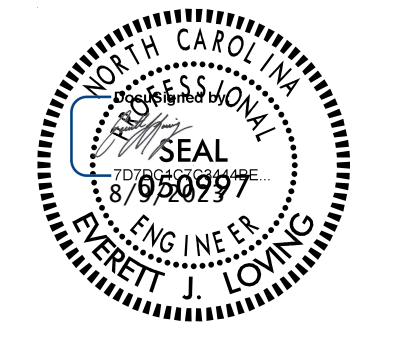


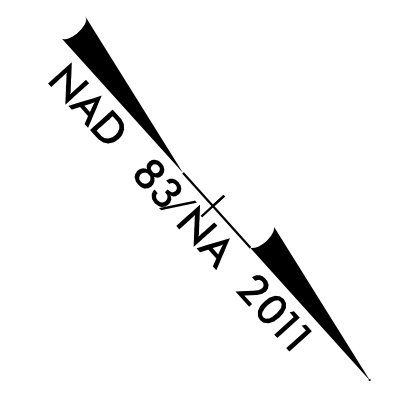
K:\PAL_Roadway\01036479 - R-5705A - NC 55\Signing and Definition\Plans\R5705A_rdy_pmp_psh_02.dgn
8/9/2023



PAVEMENT MARKING DETAIL

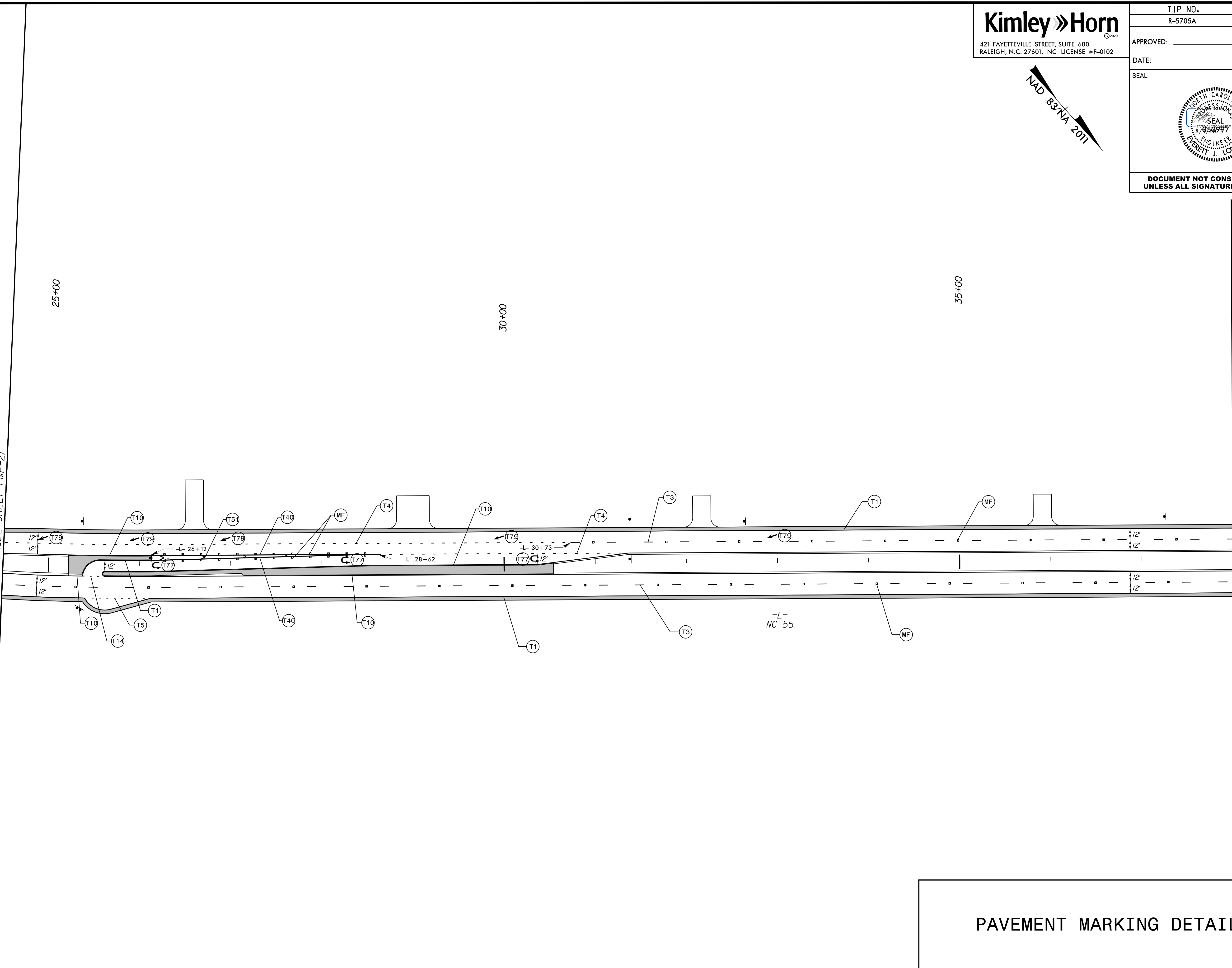
Kimley » Horn
421 FAYETTEVILLE STREET, SUITE 600
RALEIGH, N.C. 27601. NC LICENSE #F-0102

TIP NO. R-5705A	SHEET NO. PMP-3
APPROVED: _____	
DATE: _____	
SEAL	
	
DOCUMENT NOT CONSIDERED FINAL UNLESS ALL SIGNATURES COMPLETED	



8/9/2023 K:\PAL_Roadway\01036479 - R-5705A - NC 55\Signing and Definition\Plans\R5705A_rdy_pmp_psh_03.dgn

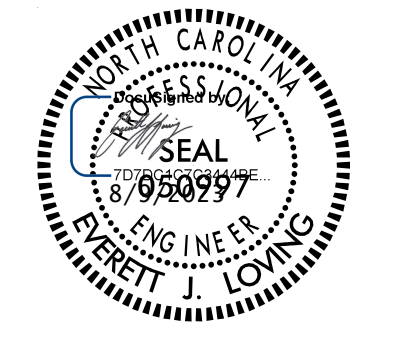
MATCHLINE -L- STA 24+50 (SEE SHEET PMP-2)



MATCHLINE -L- STA 38+00 (SEE SHEET PMP-4)

PAVEMENT MARKING DETAIL

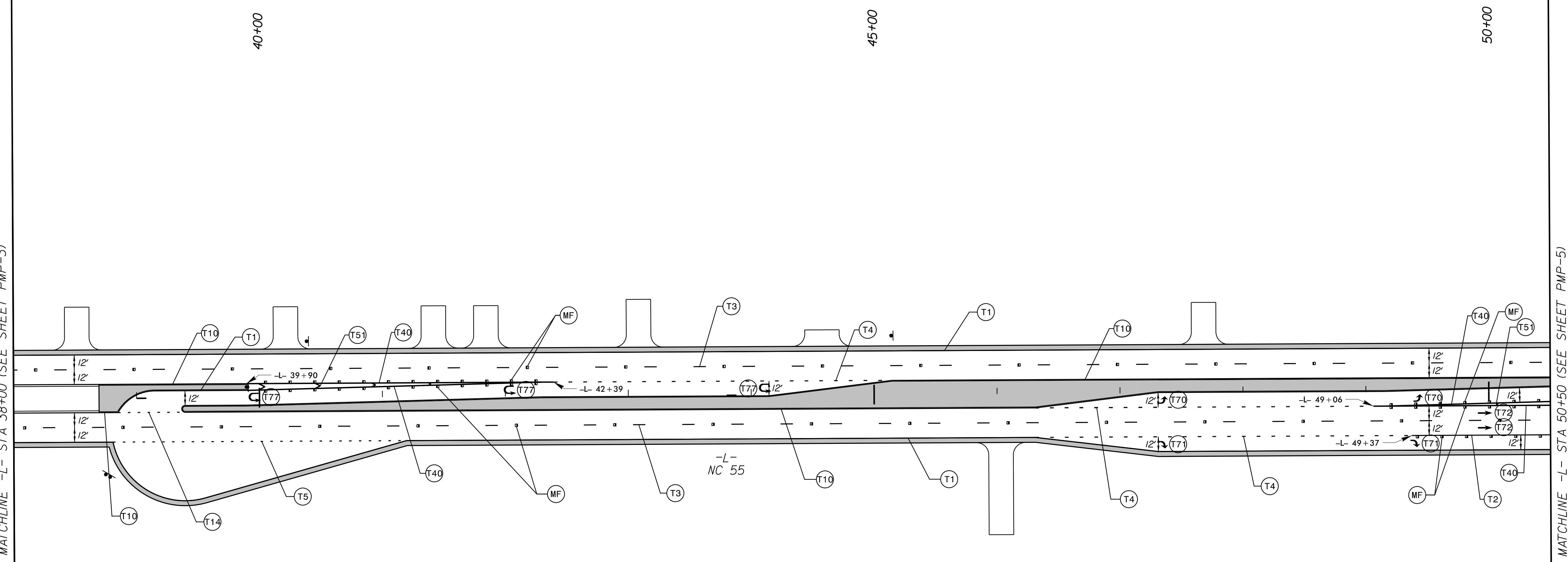
Kimley » Horn
421 FAYETTEVILLE STREET, SUITE 600
RALEIGH, N.C. 27601. NC LICENSE #F-0102

TIP NO. R-5705A	SHEET NO. PMP-4
APPROVED: _____	
DATE: _____	
SEAL	
	
DOCUMENT NOT CONSIDERED FINAL UNLESS ALL SIGNATURES COMPLETED	

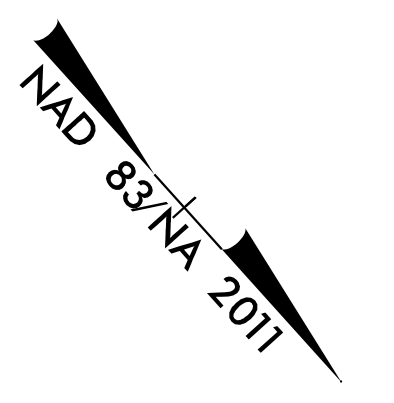
K:\PAL_Roadway\01036479 - R-5705A - NC 55\Signing and Definition\Plans\R5705A_rdy_pmp_psh_04.dgn

8/9/2023

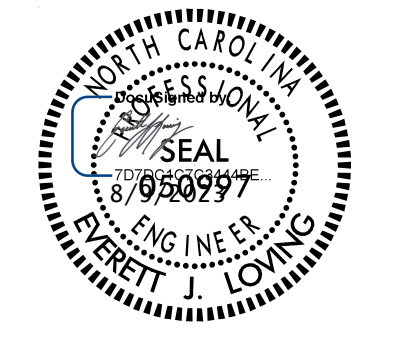
MATCHLINE -L- STA 38+00 (SEE SHEET PMP-3)

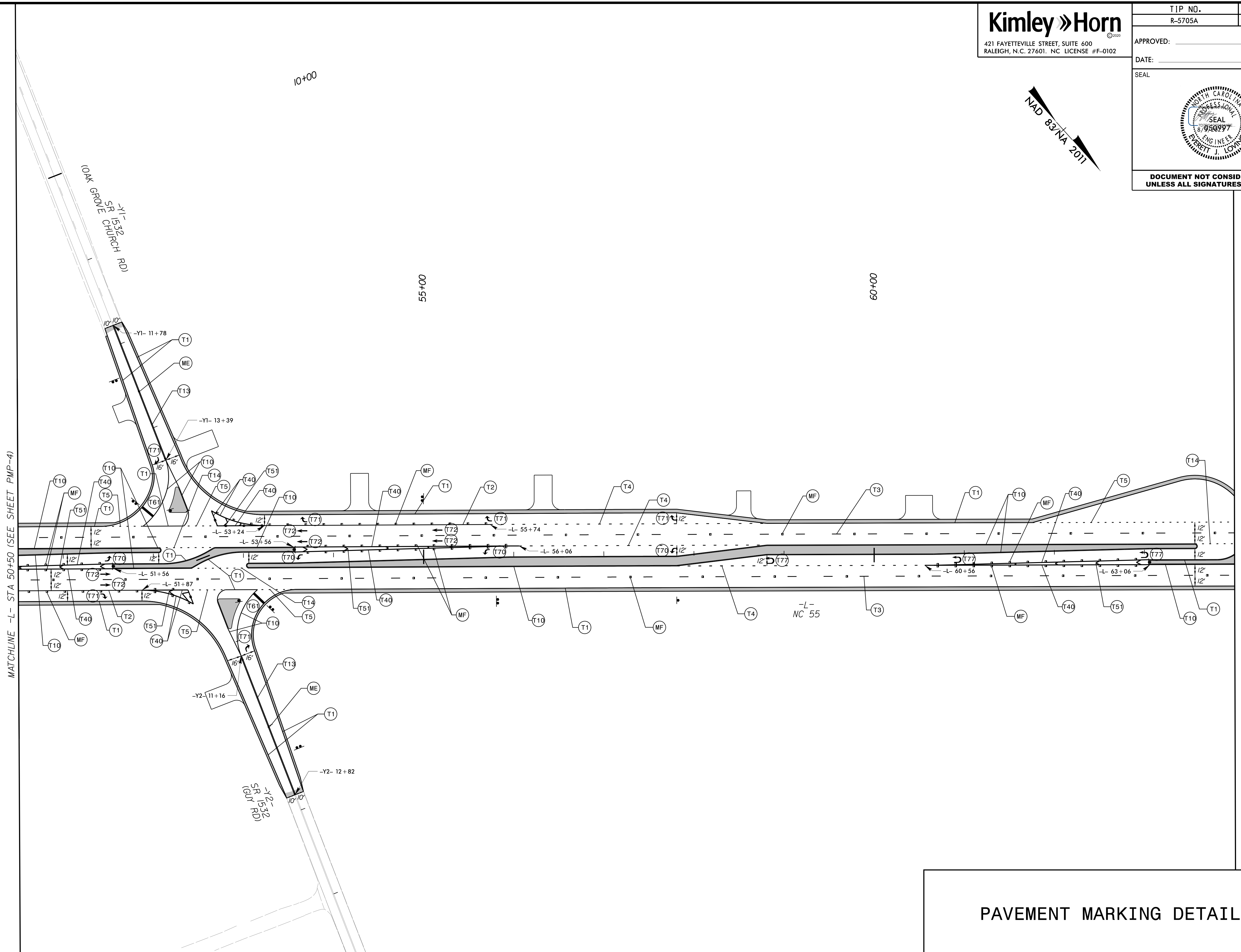
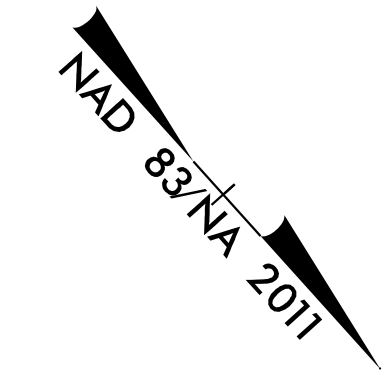


MATCHLINE -L- STA 50+50 (SEE SHEET PMP-5)



PAVEMENT MARKING DETAIL

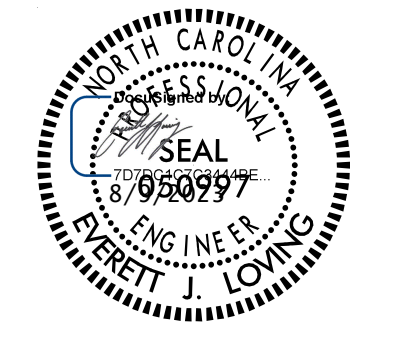
TIP NO. R-5705A	SHEET NO. PMP-5
APPROVED: _____	
DATE: _____	
SEAL	
	
DOCUMENT NOT CONSIDERED FINAL UNLESS ALL SIGNATURES COMPLETED	

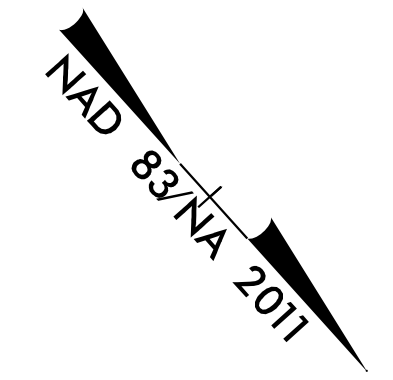


K:\PAL_Roadway\01036479 - R-5705A - NC 55\Signing and Definition\Plans\R5705A_rdy_pmp_psh_05.dgn

PAVEMENT MARKING DETAIL

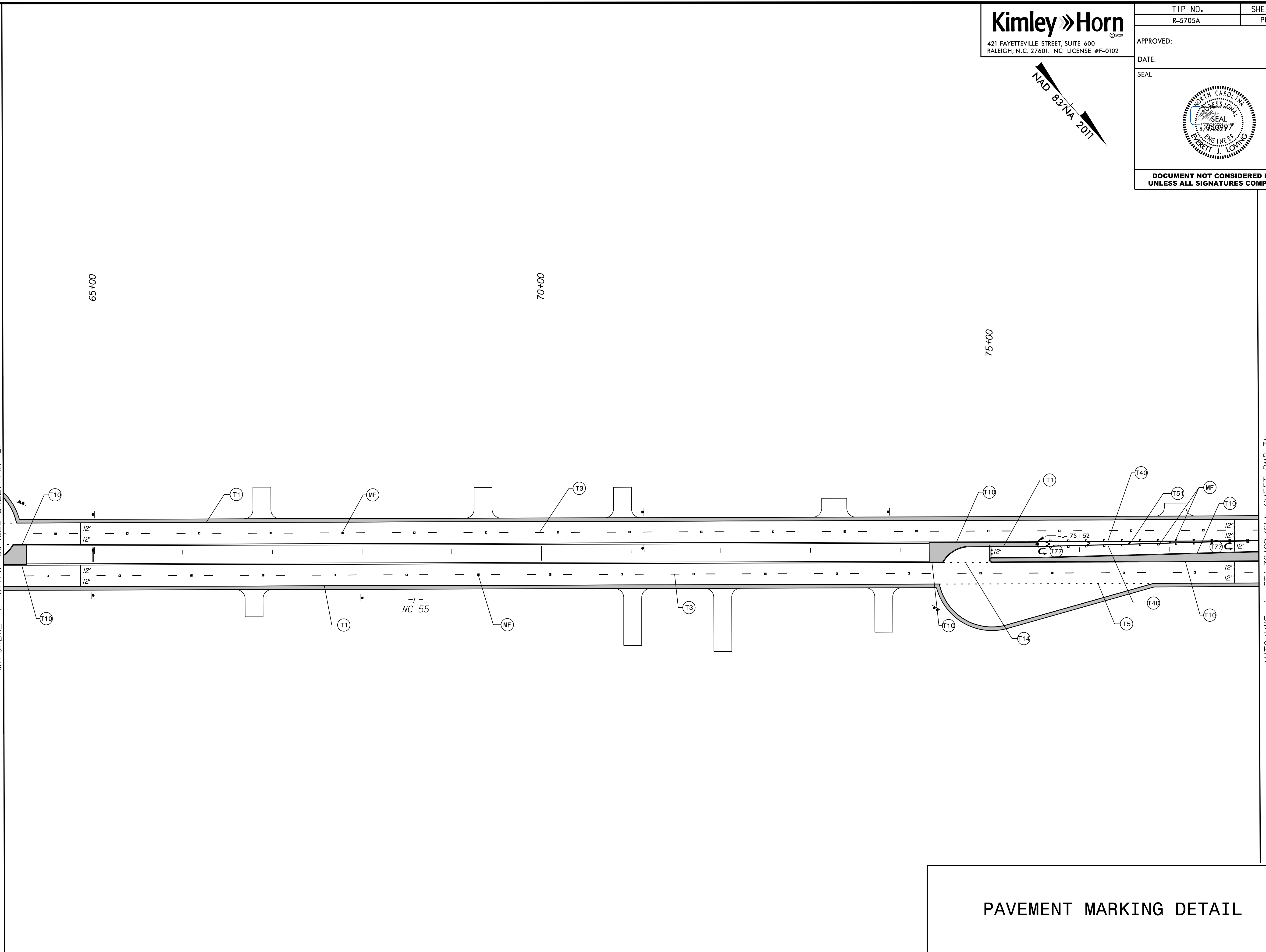
Kimley » Horn
421 FAYETTEVILLE STREET, SUITE 600
RALEIGH, N.C. 27601. NC LICENSE #F-0102

TIP NO. R-5705A	SHEET NO. PMP-6
APPROVED: _____	
DATE: _____	
SEAL	
	
DOCUMENT NOT CONSIDERED FINAL UNLESS ALL SIGNATURES COMPLETED	



K:\PAL_Roadway\01036479 - R-5705A - NC 55\Signing and Definition\Plans\R5705A_rdy_pmp_psh_06.dgn
8/9/2023

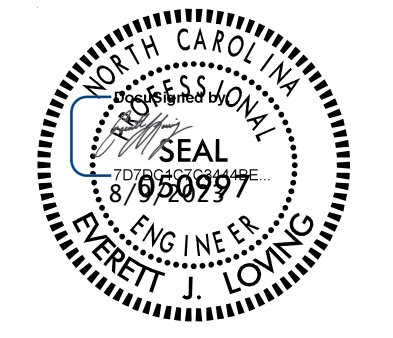
MATCHLINE -L- STA 64+00 (SEE SHEET PMP-5)

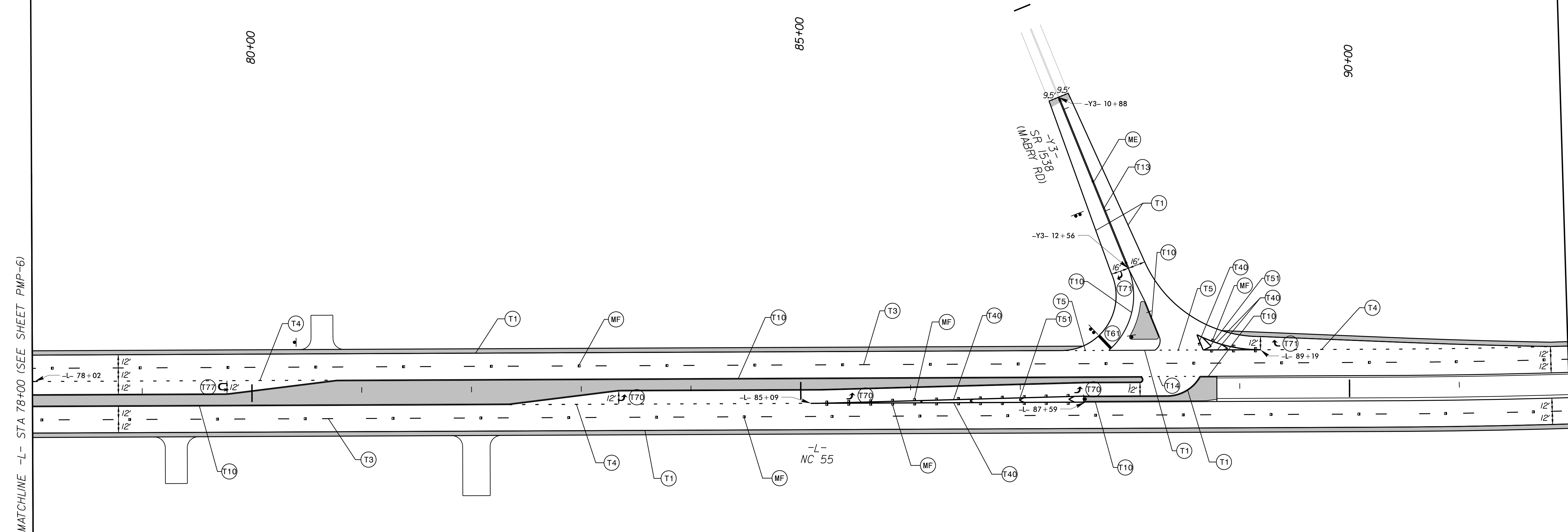
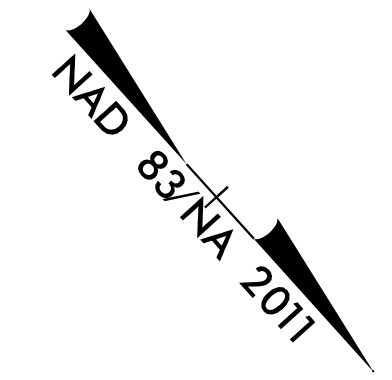


MATCHLINE -L- STA 78+00 (SEE SHEET PMP-7)

PAVEMENT MARKING DETAIL

Kimley » Horn
421 FAYETTEVILLE STREET, SUITE 600
RALEIGH, N.C. 27601. NC LICENSE #F-0102

TIP NO. R-5705A	SHEET NO. PMP-7
APPROVED: _____	
DATE: _____	
SEAL	
	
DOCUMENT NOT CONSIDERED FINAL UNLESS ALL SIGNATURES COMPLETED	



MATCHLINE -L- STA 78+00 (SEE SHEET PMP-6)

MATCHLINE -L- STA 92+00 (SEE SHEET PMP-8)

PAVEMENT MARKING DETAIL

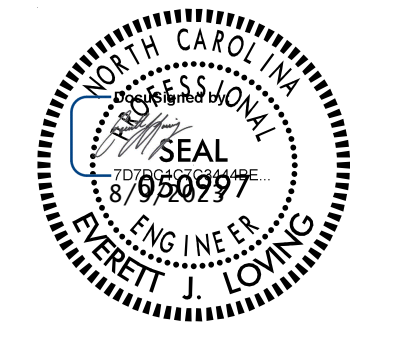
K:\PAL_Roadway\01036479 - R-5705A - NC 55\Signing and Definition\Plans\R5705A_ldy_pmp_psh_07.dgn

8/9/2023

Kimley » Horn
 421 FAYETTEVILLE STREET, SUITE 600
 RALEIGH, N.C. 27601. NC LICENSE #F-0102

TIP NO. R-5705A	SHEET NO. PMP-8
--------------------	--------------------

APPROVED: _____
 DATE: _____
 SEAL



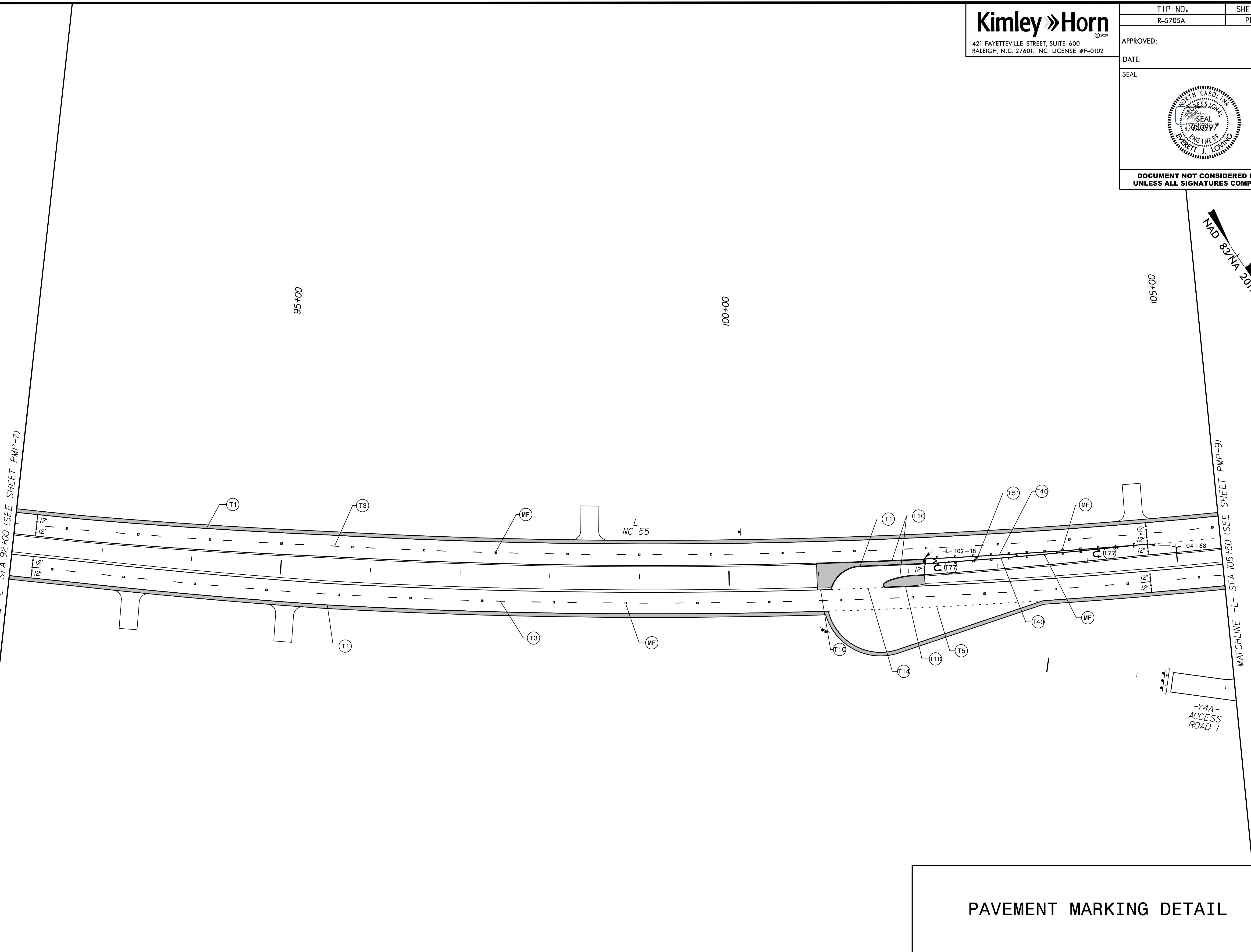
**DOCUMENT NOT CONSIDERED FINAL
 UNLESS ALL SIGNATURES COMPLETED**

K:\PAL_Roadway\01036479 - R-5705A - NC 55\Signing and Definition\Plans\R5705A_rdy_pmp_psh_08.dgn

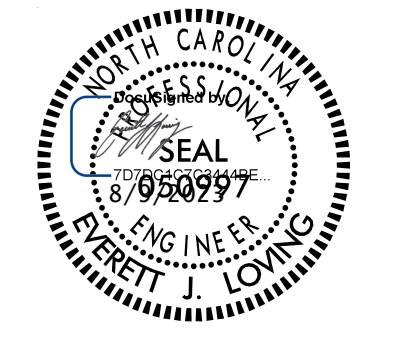
8/19/2023

MATCHLINE -L- STA 92+00 (SEE SHEET PMP-7)

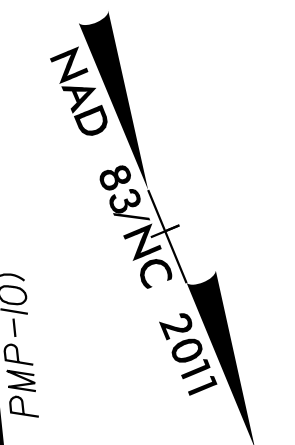
MATCHLINE -L- STA 105+50 (SEE SHEET PMP-9)



PAVEMENT MARKING DETAIL



**DOCUMENT NOT CONSIDERED FINAL
UNLESS ALL SIGNATURES COMPLETED**

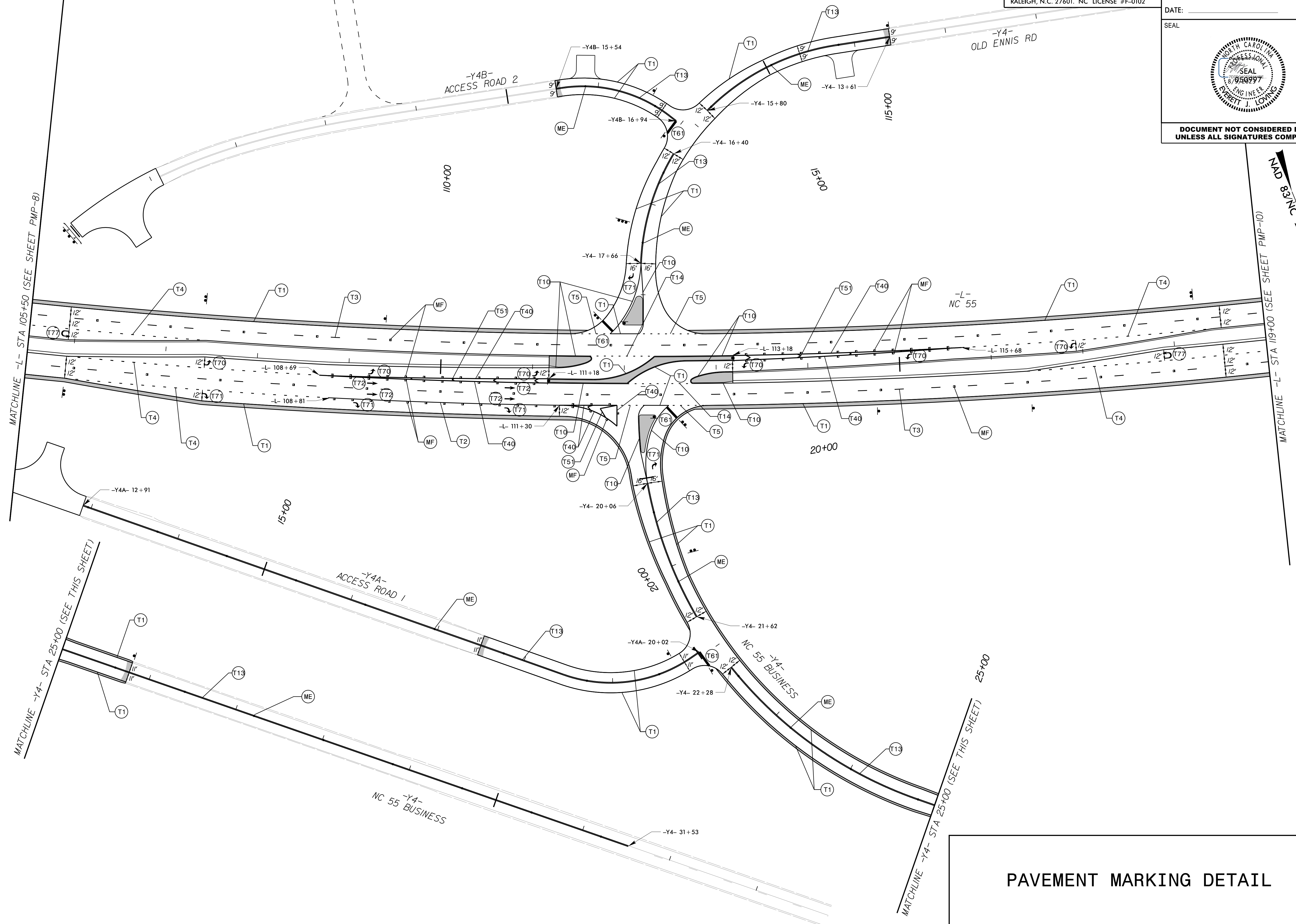


MATCHLINE -L- STA 105+50 (SEE SHEET PMP-8)

MATCHLINE -L- STA 119+00 (SEE SHEET PMP-10)

MATCHLINE -Y4- STA 25+00 (SEE THIS SHEET)

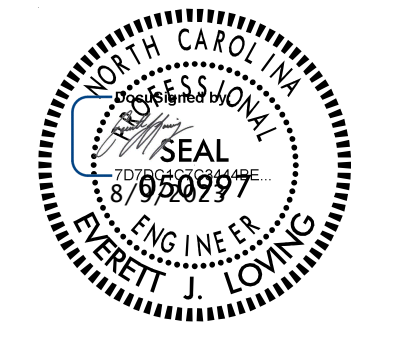
MATCHLINE -Y4- STA 25+00 (SEE THIS SHEET)

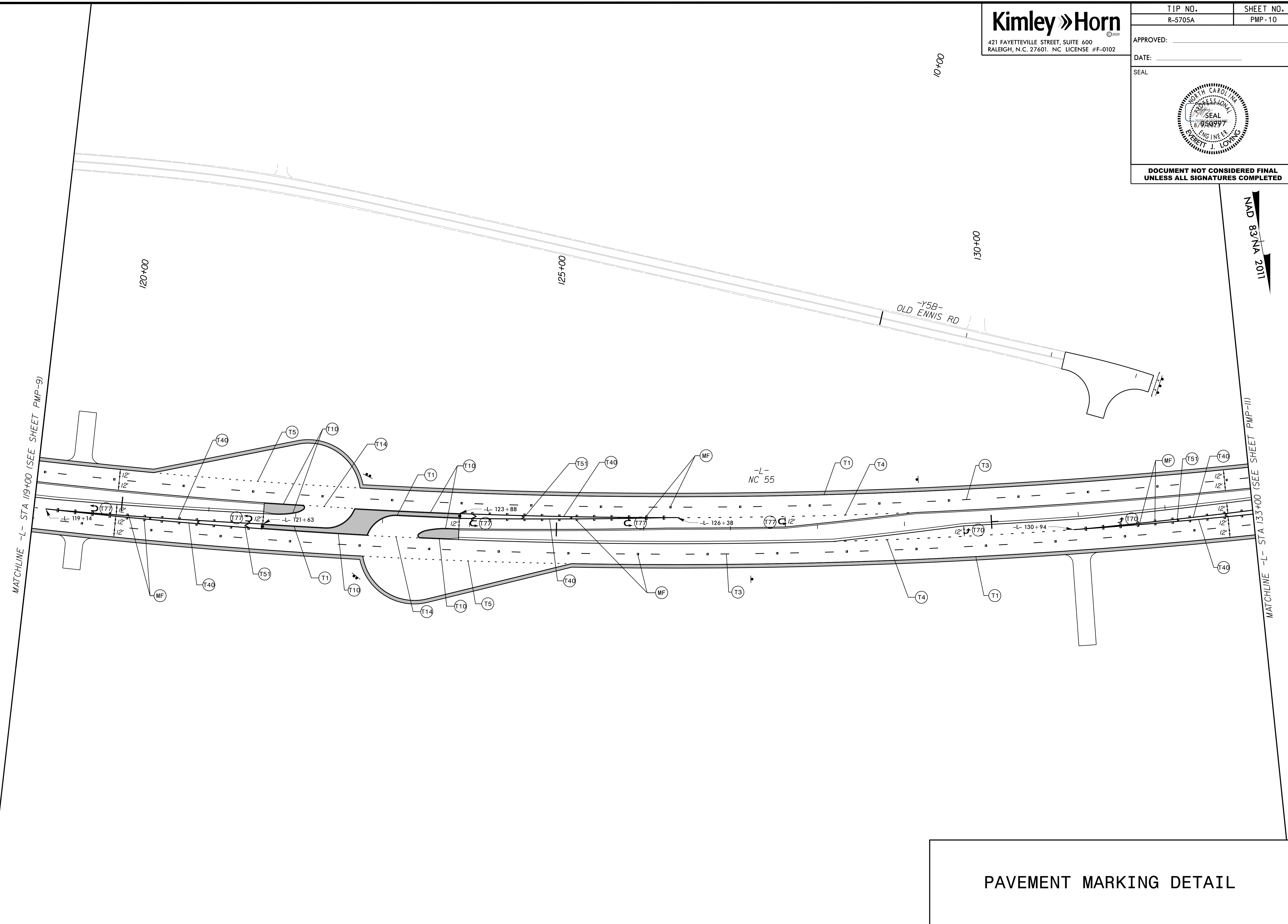


PAVEMENT MARKING DETAIL

K:\PAL_Roadway\01036479 - R-5705A - NC 55\Signing and Definition\Plans\R5705A_rdy_pmp_psh_09.dgn
8/9/2023

Kimley » Horn
421 FAYETTEVILLE STREET, SUITE 600
RALEIGH, N.C. 27601. NC LICENSE #F-0102

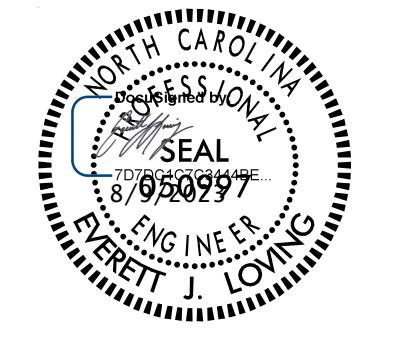
TIP NO. R-5705A	SHEET NO. PMP-10
APPROVED: _____	
DATE: _____	
SEAL	
	
DOCUMENT NOT CONSIDERED FINAL UNLESS ALL SIGNATURES COMPLETED	



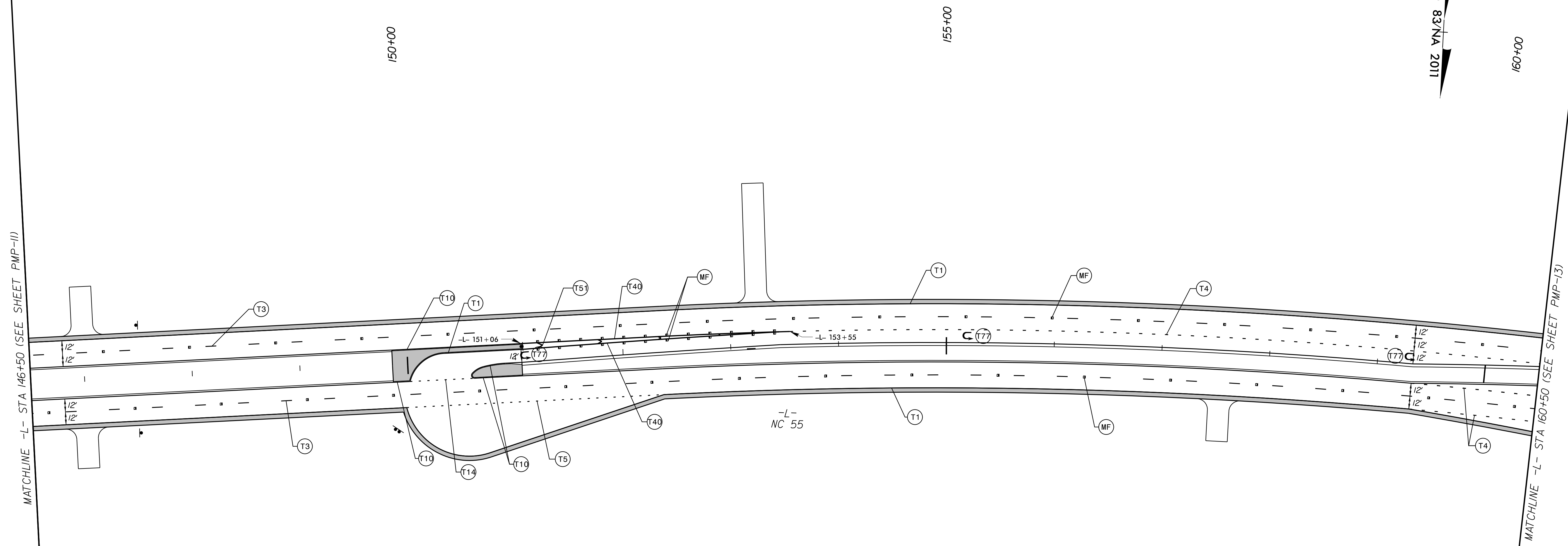
K:\PAL_Roadway\01036479 - R-5705A - NC 55\Signing and Definition\Plans\R5705A_rdy_pmp_psh_10.dgn
8/9/2023

PAVEMENT MARKING DETAIL

Kimley » Horn
421 FAYETTEVILLE STREET, SUITE 600
RALEIGH, N.C. 27601. NC LICENSE #F-0102

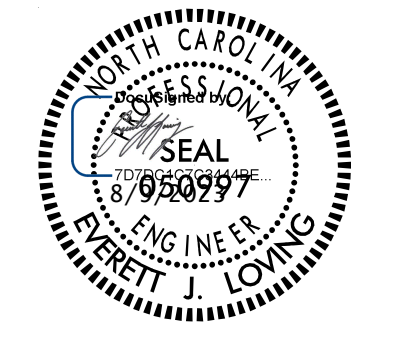
TIP NO. R-5705A	SHEET NO. PMP-12
APPROVED: _____	
DATE: _____	
SEAL	
	
DOCUMENT NOT CONSIDERED FINAL UNLESS ALL SIGNATURES COMPLETED	

NAD
83/NA
2017



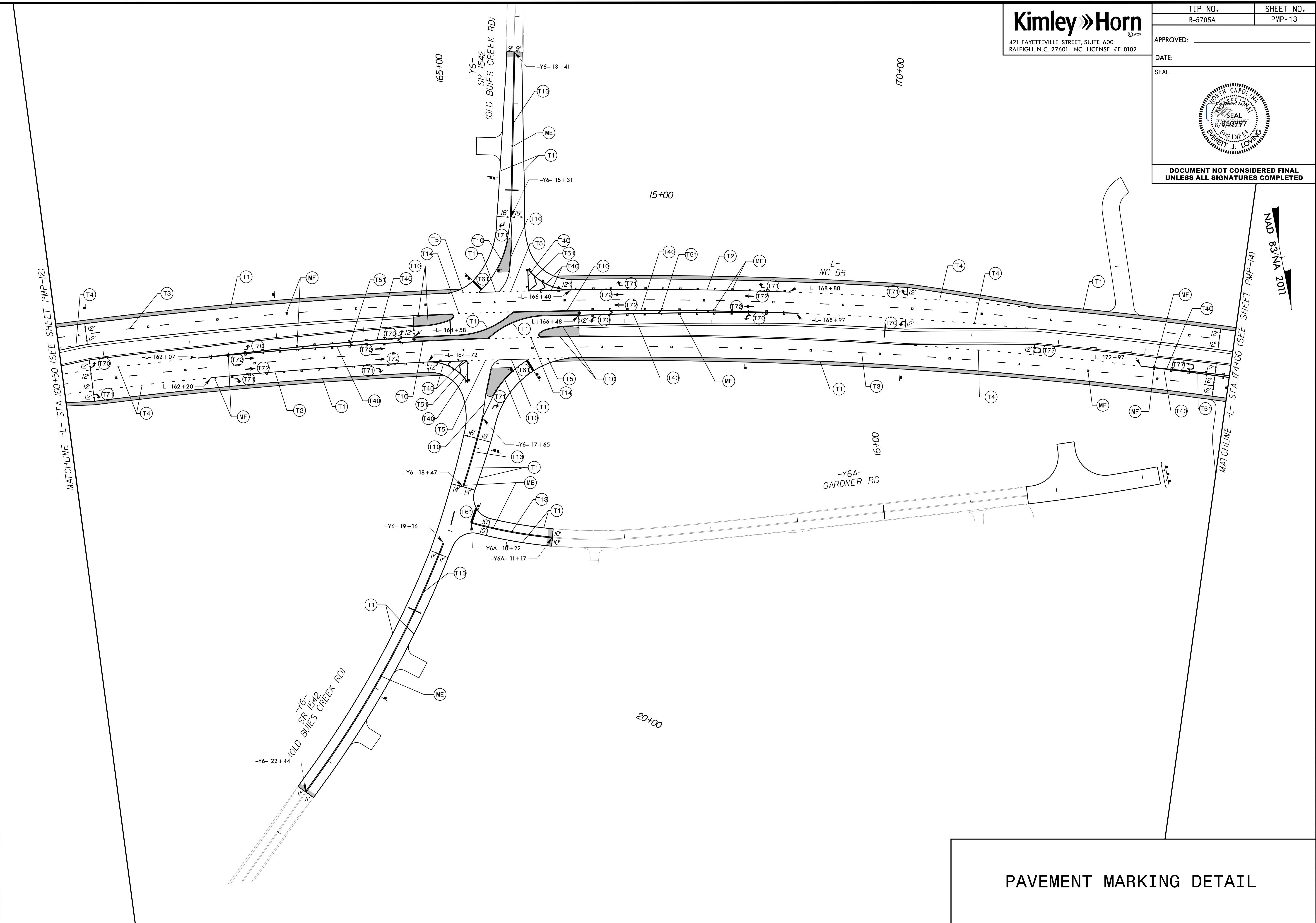
8/9/2023 K:\PAL_Roadway\01036479 - R-5705A - NC 55\Signing and Definition\Plans\R5705A_rdy_pmp_psh_12.dgn

PAVEMENT MARKING DETAIL

TIP NO. R-5705A	SHEET NO. PMP-13
APPROVED: _____	
DATE: _____	
SEAL	
	
DOCUMENT NOT CONSIDERED FINAL UNLESS ALL SIGNATURES COMPLETED	

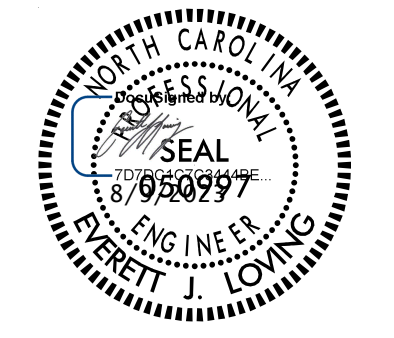
K:\PAL_Roadway\01036479 - R-5705A - NC 55\Signing and Definition\Plans\R5705A_rdy_pmp_psh_13.dgn

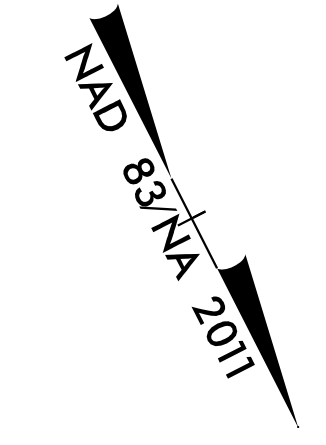
8/9/2023



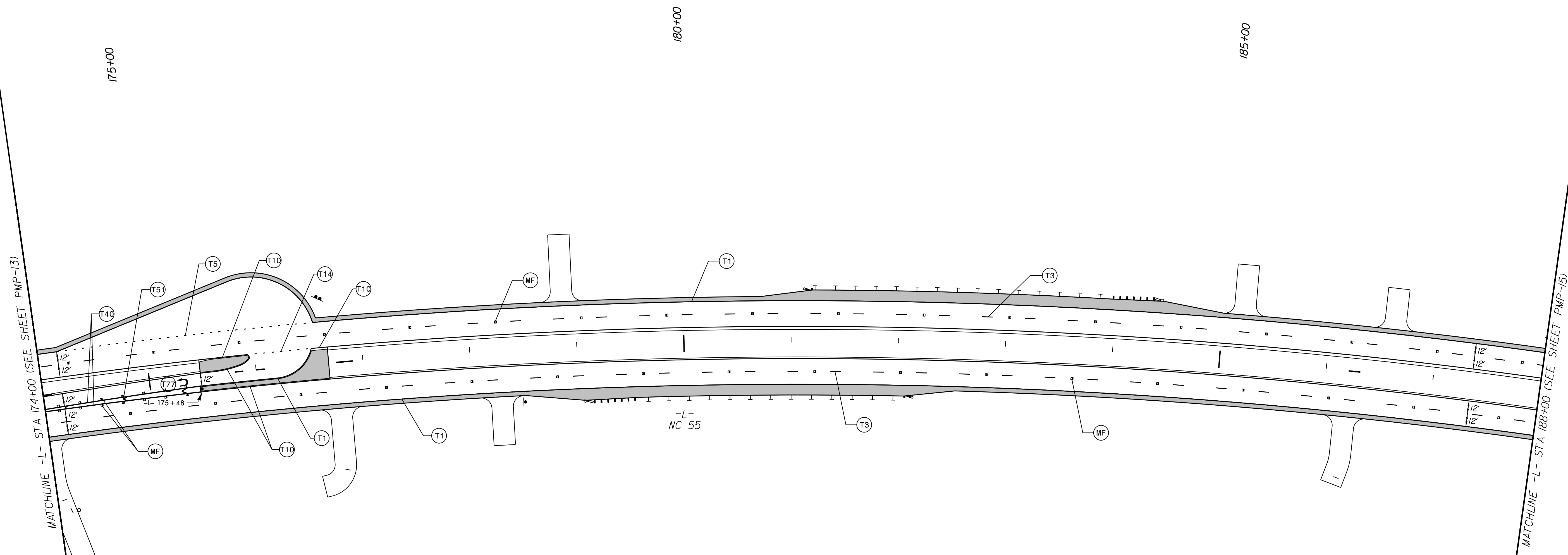
PAVEMENT MARKING DETAIL

Kimley » Horn
421 FAYETTEVILLE STREET, SUITE 600
RALEIGH, N.C. 27601. NC LICENSE #F-0102

TIP NO. R-5705A	SHEET NO. PMP-14
APPROVED: _____	
DATE: _____	
SEAL	
	
DOCUMENT NOT CONSIDERED FINAL UNLESS ALL SIGNATURES COMPLETED	

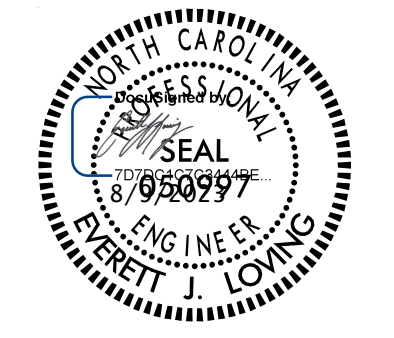


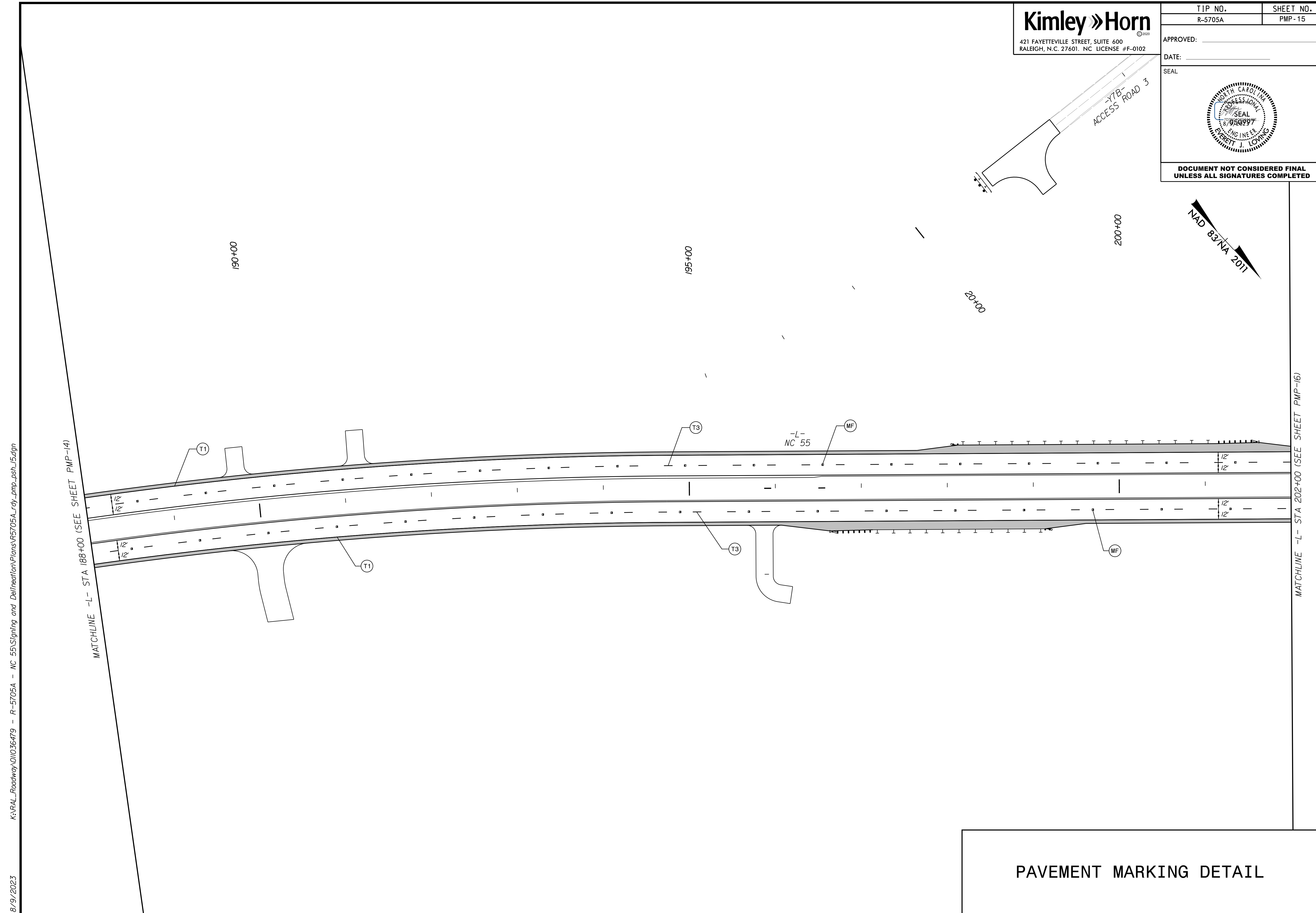
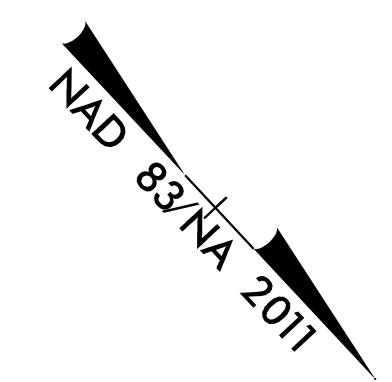
K:\PAL_Roadway\01036479 - R-5705A - NC 55\Signing and Definition\Plans\R5705A_rdy_pmp_psh_14.dgn
8/9/2023



PAVEMENT MARKING DETAIL

Kimley » Horn
421 FAYETTEVILLE STREET, SUITE 600
RALEIGH, N.C. 27601. NC LICENSE #F-0102

TIP NO. R-5705A	SHEET NO. PMP-15
APPROVED: _____	
DATE: _____	
SEAL	
	
DOCUMENT NOT CONSIDERED FINAL UNLESS ALL SIGNATURES COMPLETED	

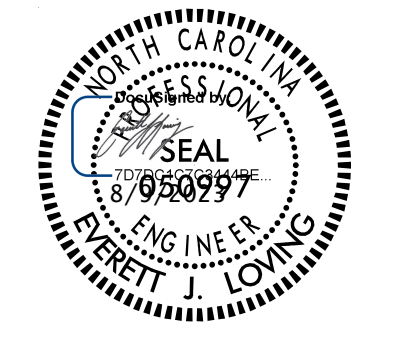


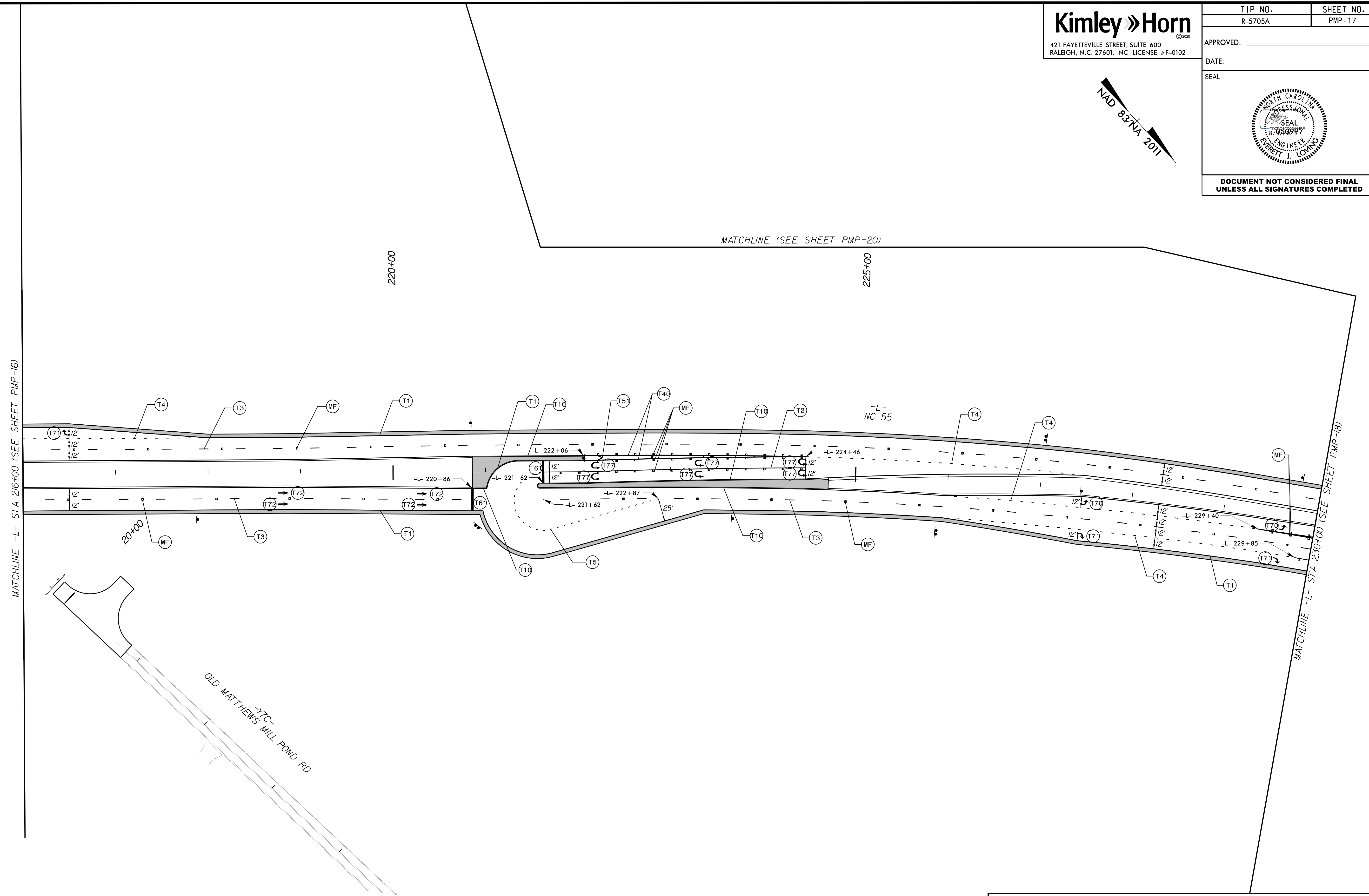
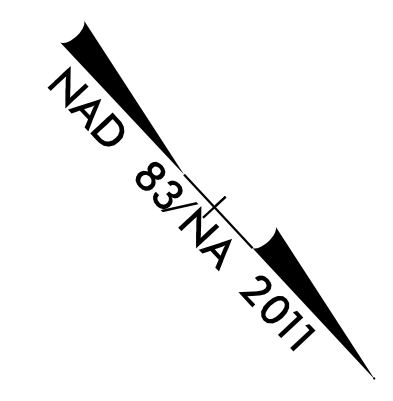
K:\PAL_Roadway\01036479 - R-5705A - NC 55\Signing and Definition\Plans\R5705A_dv_pmp_psh_15.dgn

8/9/2023

PAVEMENT MARKING DETAIL

Kimley » Horn
421 FAYETTEVILLE STREET, SUITE 600
RALEIGH, N.C. 27601. NC LICENSE #F-0102

TIP NO. R-5705A	SHEET NO. PMP-17
APPROVED: _____	
DATE: _____	
SEAL	
	
DOCUMENT NOT CONSIDERED FINAL UNLESS ALL SIGNATURES COMPLETED	



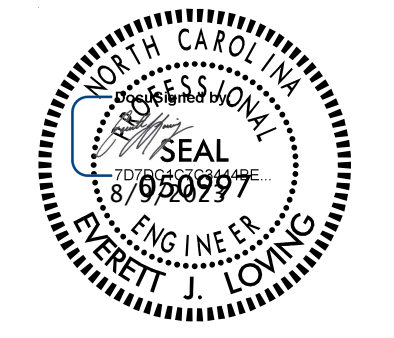
K:\PAL_Roadway\01036479 - R-5705A - NC 55\Signing and Definition\Plans\R5705A_rdy_pmp_psh_17.dgn
8/9/2023

PAVEMENT MARKING DETAIL

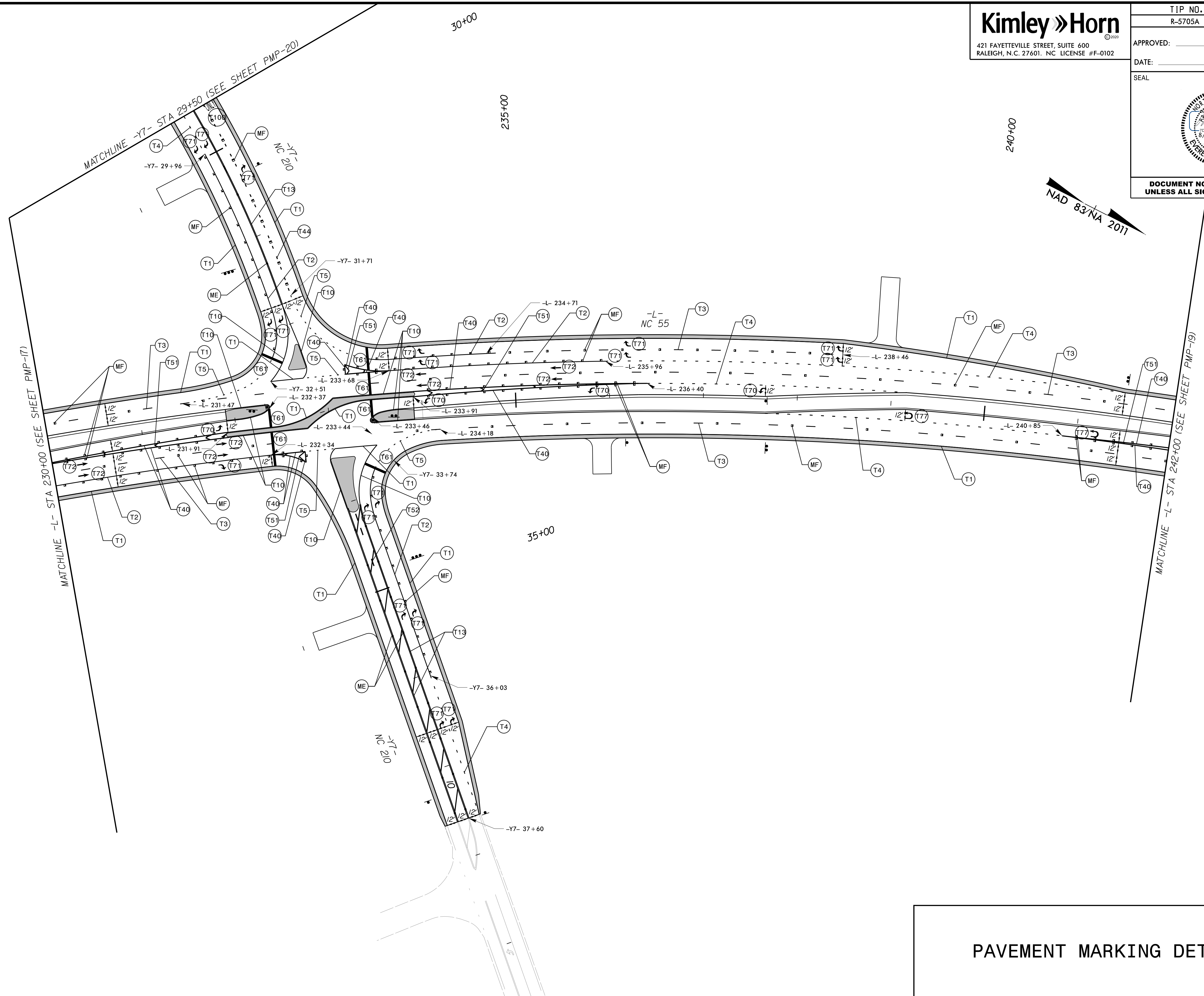
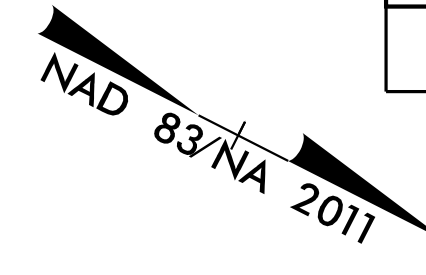
Kimley » Horn
 421 FAYETTEVILLE STREET, SUITE 600
 RALEIGH, N.C. 27601. NC LICENSE #F-0102

TIP NO. R-5705A	SHEET NO. PMP-18
--------------------	---------------------

APPROVED: _____
 DATE: _____
 SEAL



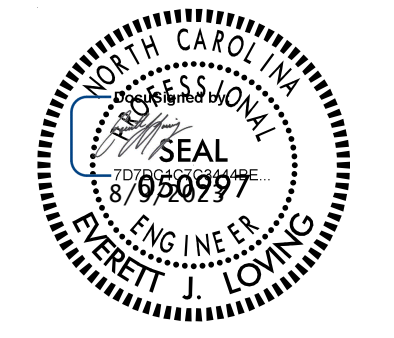
DOCUMENT NOT CONSIDERED FINAL
 UNLESS ALL SIGNATURES COMPLETED



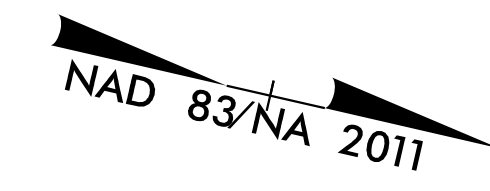
K:\PAL_Roadway\01036479 - R-5705A - NC 55\Signing and Definition\Plans\R5705A_rdy_pmp_psh_18.dgn

8/9/2023

PAVEMENT MARKING DETAIL

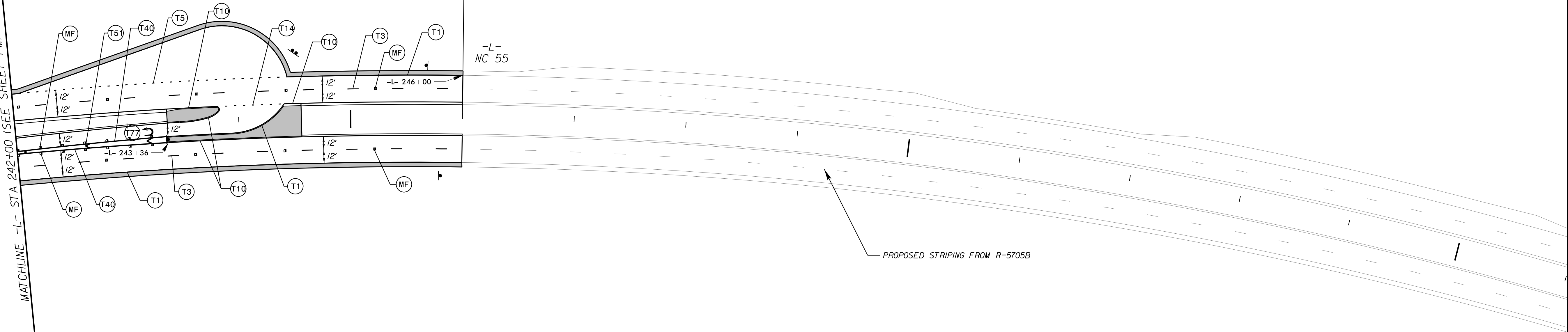


**DOCUMENT NOT CONSIDERED FINAL
 UNLESS ALL SIGNATURES COMPLETED**



K:\PAL_Roadway\01036479 - R-5705A - NC 55\Signing and Definition\Plans\R5705A_rdy_pmp_psh_19.dgn

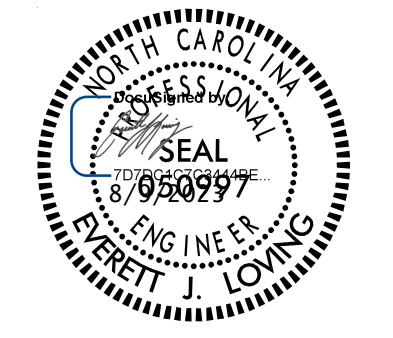
MATCHLINE -L- STA 242+00 (SEE SHEET PMP-18)

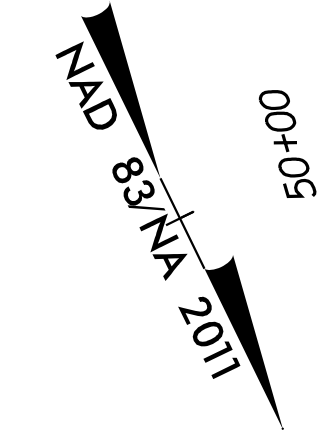


END TIP PROJECT R-5705A
 BEGIN TIP PROJECT R-5705B (BY OTHERS)
 -L- POC Sta. 246+00.00 (BK) (R-5705A)
 -L- POC Sta. 246+00.00 (AH) (R-5705B)

PAVEMENT MARKING DETAIL

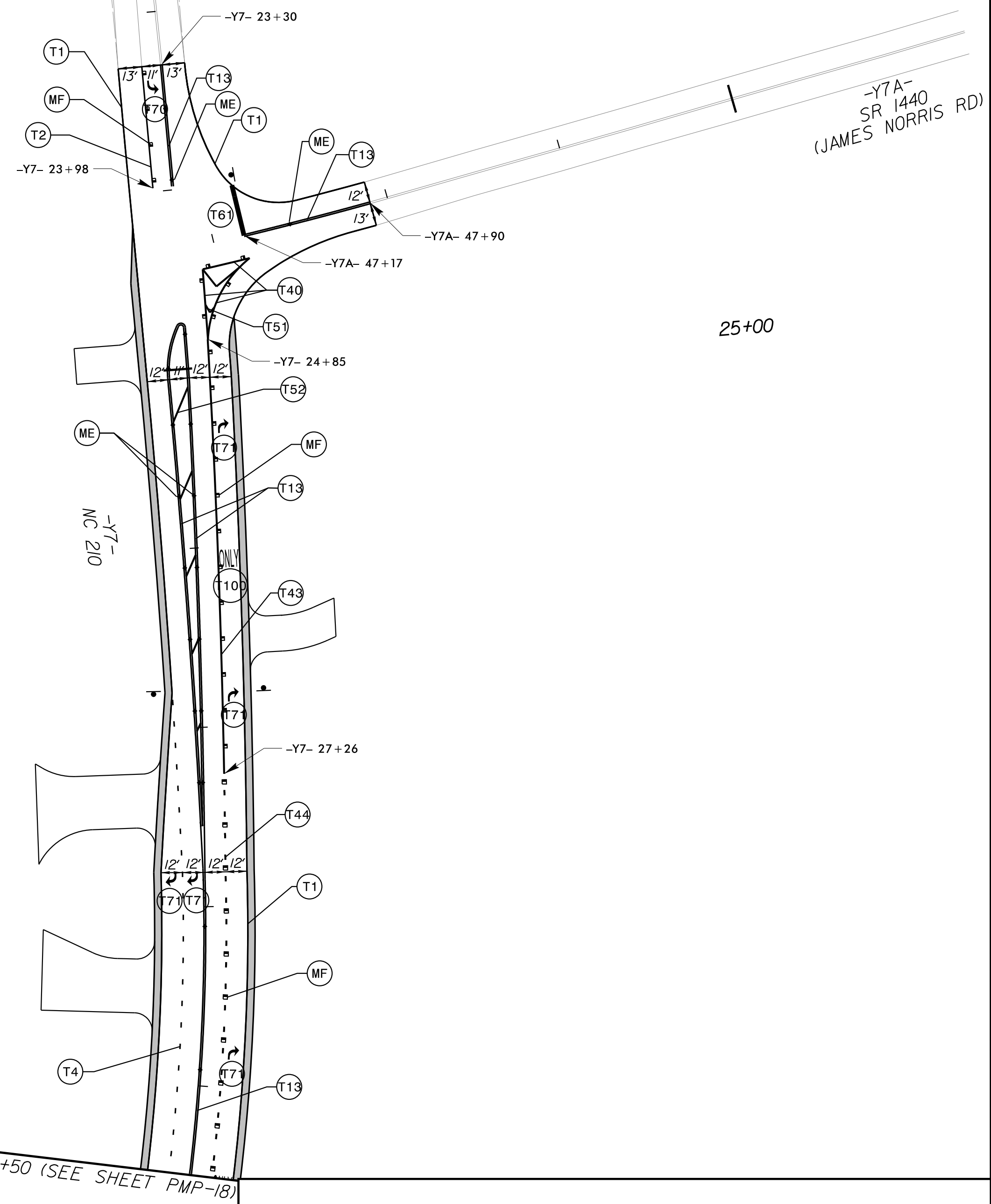
Kimley Horn
421 FAYETTEVILLE STREET, SUITE 600
RALEIGH, N.C. 27601. NC LICENSE #F-0102

TIP NO. R-5705A	SHEET NO. PMP-20
APPROVED: _____	
DATE: _____	
SEAL	
	
DOCUMENT NOT CONSIDERED FINAL UNLESS ALL SIGNATURES COMPLETED	



20+00

-Y7-
NC 210



25+00

MATCHLINE (SEE SHEET PMP-17)

MATCHLINE (SEE SHEET PMP-17)

MATCHLINE -Y7- STA 29+50 (SEE SHEET PMP-18)

PAVEMENT MARKING DETAIL

K:\PAL_Roadway\01036479 - R-5705A - NC 55\Signing and Definition\Plans\R5705A_rdy_pmp_psh_20.dgn
8/9/2023