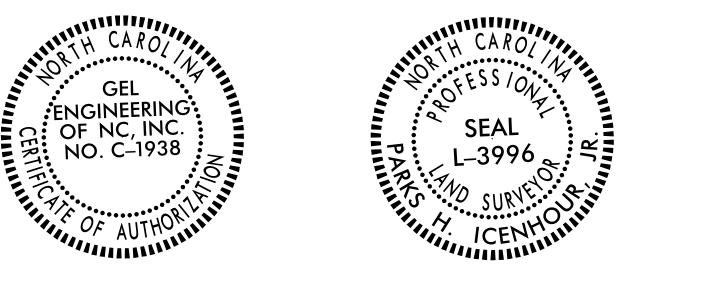


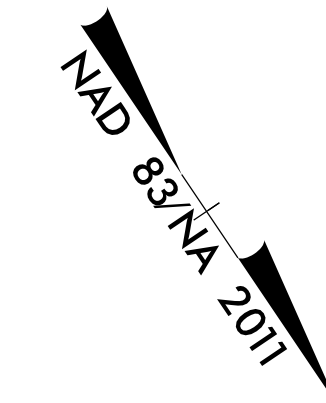
Location and Surveys

GEL SOLUTIONS an Affiliate of THE GEL GROUP, INC. 2700 SUMNER BLVD. SUITE 106 RALEIGH, NC 27616 (919) 544-1100 WWW.GEL-SOLUTIONS.COM



DOCUMENT NOT CONSIDERED FINAL UNLESS ALL SIGNATURES COMPLETED

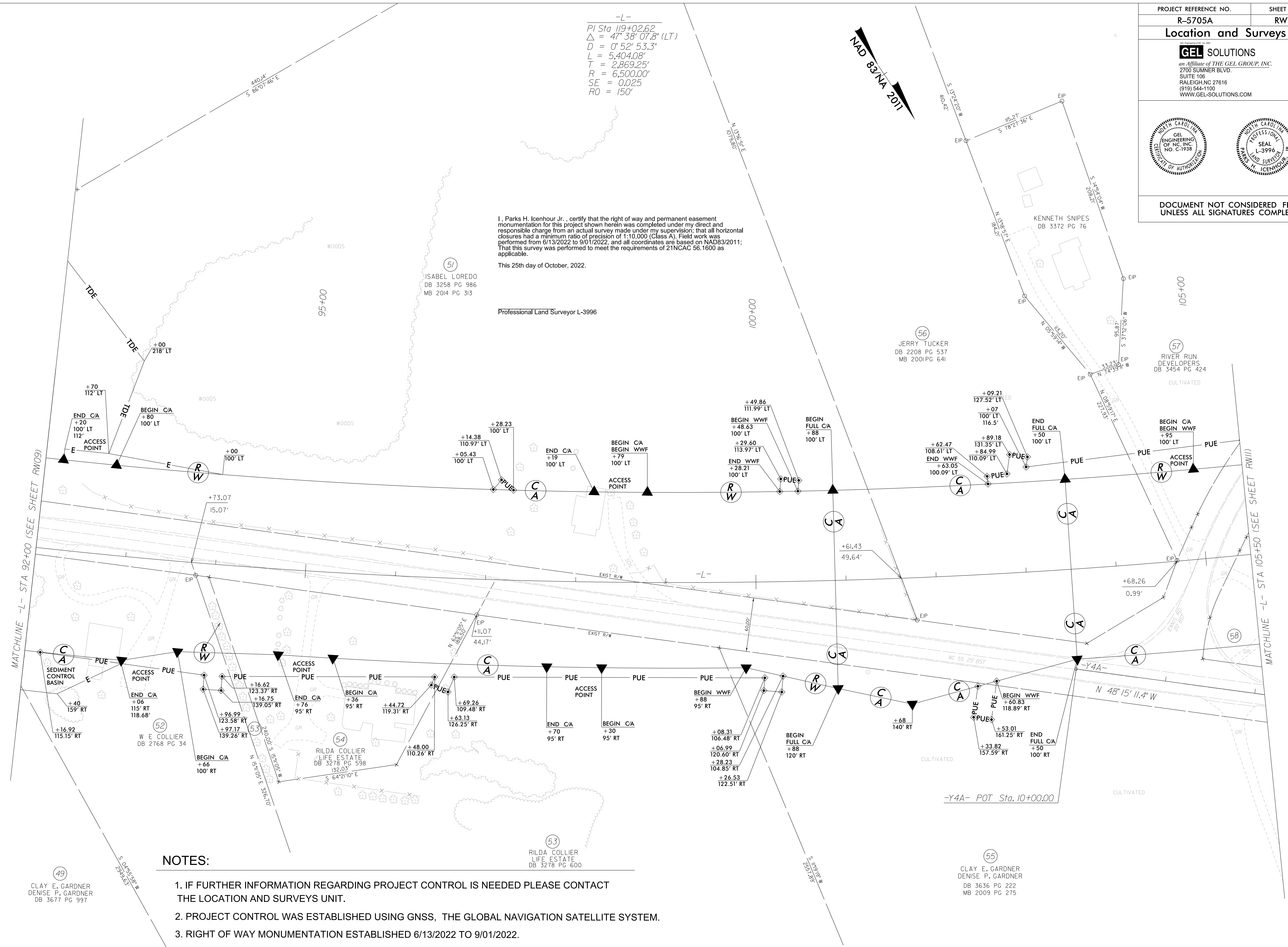
-L- PI Sta 119+02.62 Δ = 47° 38' 07.8" (LT) D = 0° 52' 53.3" L = 5,404.08' T = 2,869.25' R = 6,500.00' SE = 0.025 RO = 150'



I, Parks H. Icenhour Jr., certify that the right of way and permanent easement monumentation for this project shown herein was completed under my direct and responsible charge from an actual survey made under my supervision; that all horizontal closures had a minimum ratio of precision of 1:10,000 (Class A). Field work was performed from 6/13/2022 to 9/01/2022, and all coordinates are based on NAD83/2011; That this survey was performed to meet the requirements of 21NCAC 56.1600 as applicable.

This 25th day of October, 2022.

Professional Land Surveyor L-3996



NOTES:

- 1. IF FURTHER INFORMATION REGARDING PROJECT CONTROL IS NEEDED PLEASE CONTACT THE LOCATION AND SURVEYS UNIT.
2. PROJECT CONTROL WAS ESTABLISHED USING GNSS, THE GLOBAL NAVIGATION SATELLITE SYSTEM.
3. RIGHT OF WAY MONUMENTATION ESTABLISHED 6/13/2022 TO 9/01/2022.

REVISIONS

24-OCT-2022 14:36 C:\GEL\Projects\2022\R-5705A_ROW_V=5705.r.w.sheets\R5705A_Ls_rw10.dgn AT DESKTOP-ERRYSVF Jason Private

Location and Surveys

GEL SOLUTIONS
an Affiliate of THE GEL GROUP, INC.
2700 SUMNER BLVD.
SUITE 106
RALEIGH, NC 27616
(919) 544-1100
WWW.GEL-SOLUTIONS.COM



DOCUMENT NOT CONSIDERED FINAL UNLESS ALL SIGNATURES COMPLETED

I, Parks H. Icenhour Jr., certify that the right of way and permanent easement monumentation for this project shown herein was completed under my direct and responsible charge from an actual survey made under my supervision; that all horizontal closures had a minimum ratio of precision of 1:10,000 (Class A). Field work was performed from 6/13/2022 to 9/01/2022, and all coordinates are based on NAD83/2011; That this survey was performed to meet the requirements of 21NCAC 56.1600 as applicable.

This 25th day of October, 2022.

Professional Land Surveyor L-3996

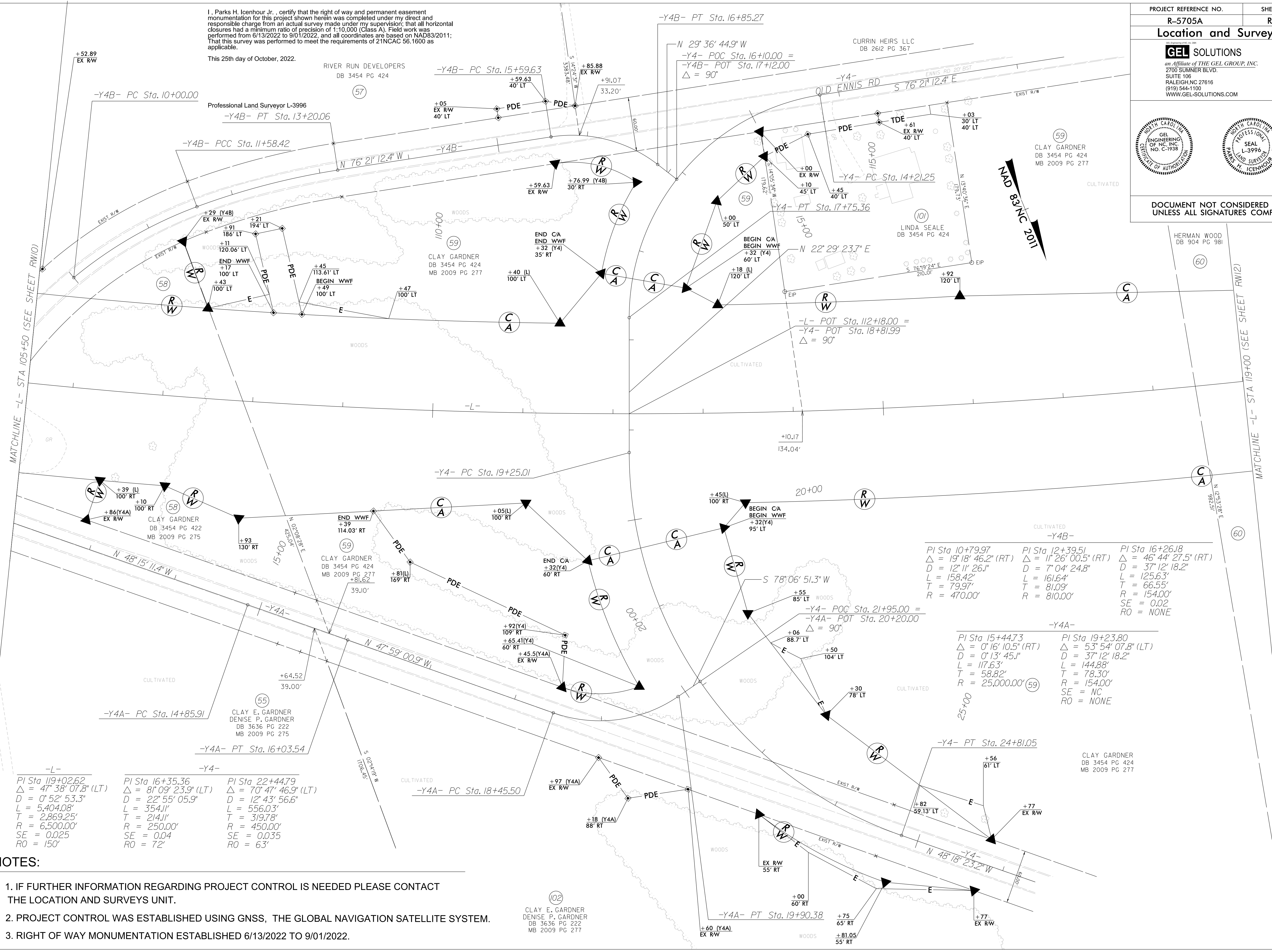


Table with 3 columns of curve data for -L- and -Y4- alignments, including PI, Delta, D, L, T, R, SE, and RO values.

Table with 3 columns of curve data for -Y4B- alignments, including PI, Delta, D, L, T, R, SE, and RO values.


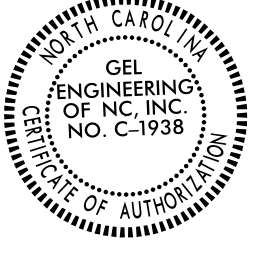
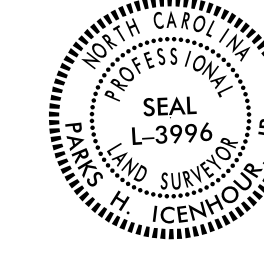
Table with 2 columns of curve data for -Y4A- alignments, including PI, Delta, D, L, T, R, SE, and RO values.

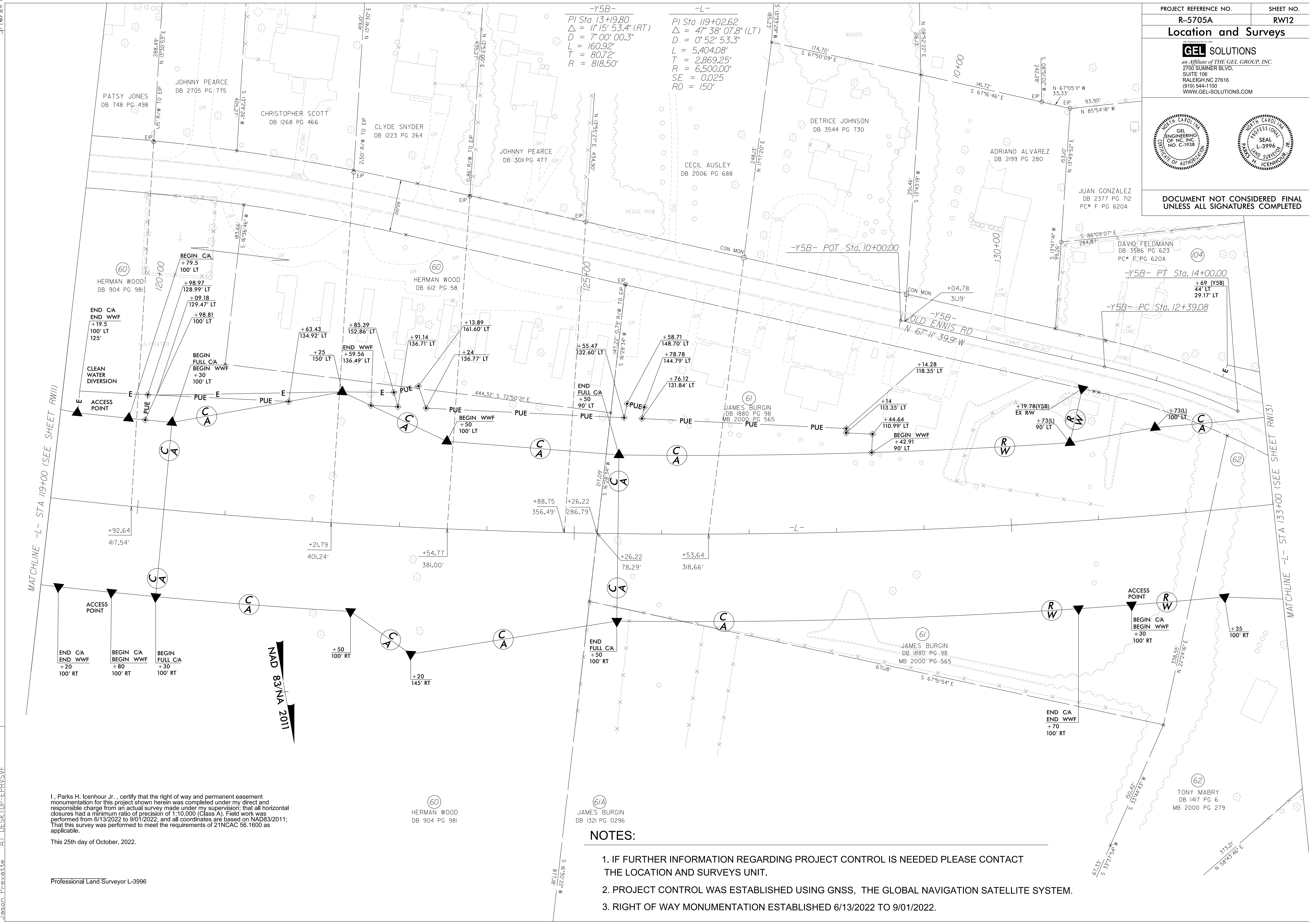
NOTES:

- 1. IF FURTHER INFORMATION REGARDING PROJECT CONTROL IS NEEDED PLEASE CONTACT THE LOCATION AND SURVEYS UNIT.
2. PROJECT CONTROL WAS ESTABLISHED USING GNSS, THE GLOBAL NAVIGATION SATELLITE SYSTEM.
3. RIGHT OF WAY MONUMENTATION ESTABLISHED 6/13/2022 TO 9/01/2022.

REVISIONS

24-OCT-2022 14:43 C:\GEL\elect\2022\R-5705A_ROW\Y-5705.r.w.sheets\R5705A.LS.r.w11.dgn Jason Pruvitt

| | |
|---|---|
| PROJECT REFERENCE NO. | SHEET NO. |
| R-5705A | RW12 |
| Location and Surveys | |
|  <small>an Affiliate of THE GEL GROUP, INC.</small> 2700 SUMNER BLVD. SUITE 106 RALEIGH, NC 27616 (919) 544-1100 WWW.GEL-SOLUTIONS.COM | |
|  |  |
| DOCUMENT NOT CONSIDERED FINAL UNLESS ALL SIGNATURES COMPLETED | |



REVISIONS

I, Parks H. Icenhour Jr., certify that the right of way and permanent easement monumentation for this project shown herein was completed under my direct and responsible charge from an actual survey made under my supervision; that all horizontal closures had a minimum ratio of precision of 1:10,000 (Class A). Field work was performed from 6/13/2022 to 9/01/2022, and all coordinates are based on NAD83/2011; That this survey was performed to meet the requirements of 21NCAC 56.1600 as applicable.


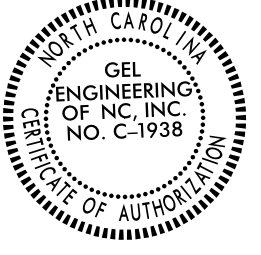

This 25th day of October, 2022.

Professional Land Surveyor L-3996

NOTES:

1. IF FURTHER INFORMATION REGARDING PROJECT CONTROL IS NEEDED PLEASE CONTACT THE LOCATION AND SURVEYS UNIT.
2. PROJECT CONTROL WAS ESTABLISHED USING GNSS, THE GLOBAL NAVIGATION SATELLITE SYSTEM.
3. RIGHT OF WAY MONUMENTATION ESTABLISHED 6/13/2022 TO 9/01/2022.

24-OCT-2022 13:47 2022-R-5705A_ROW-V-5705.rw.sheets\F5705A_Ls.rw12.dgn
 610618.dwg
 JASON F. EVANS
 AT DESKTOP-EPRI\SVP

| | |
|--|-----------|
| PROJECT REFERENCE NO. | SHEET NO. |
| R-5705A | RW13 |
| Location and Surveys | |
|  GEL SOLUTIONS an Affiliate of THE GEL GROUP, INC. 2700 SUMNER BLVD. SUITE 106 RALEIGH, NC 27616 (919) 544-1100 WWW.GEL-SOLUTIONS.COM | |
|   | |
| DOCUMENT NOT CONSIDERED FINAL UNLESS ALL SIGNATURES COMPLETED | |

I, Parks H. Icenhour Jr., certify that the right of way and permanent easement monumentation for this project shown herein was completed under my direct and responsible charge from an actual survey made under my supervision; that all horizontal closures had a minimum ratio of precision of 1:10,000 (Class A). Field work was performed from 6/13/2022 to 9/01/2022, and all coordinates are based on NAD83/2011; That this survey was performed to meet the requirements of 21NCAC 56.1600 as applicable.

This 25th day of October, 2022.

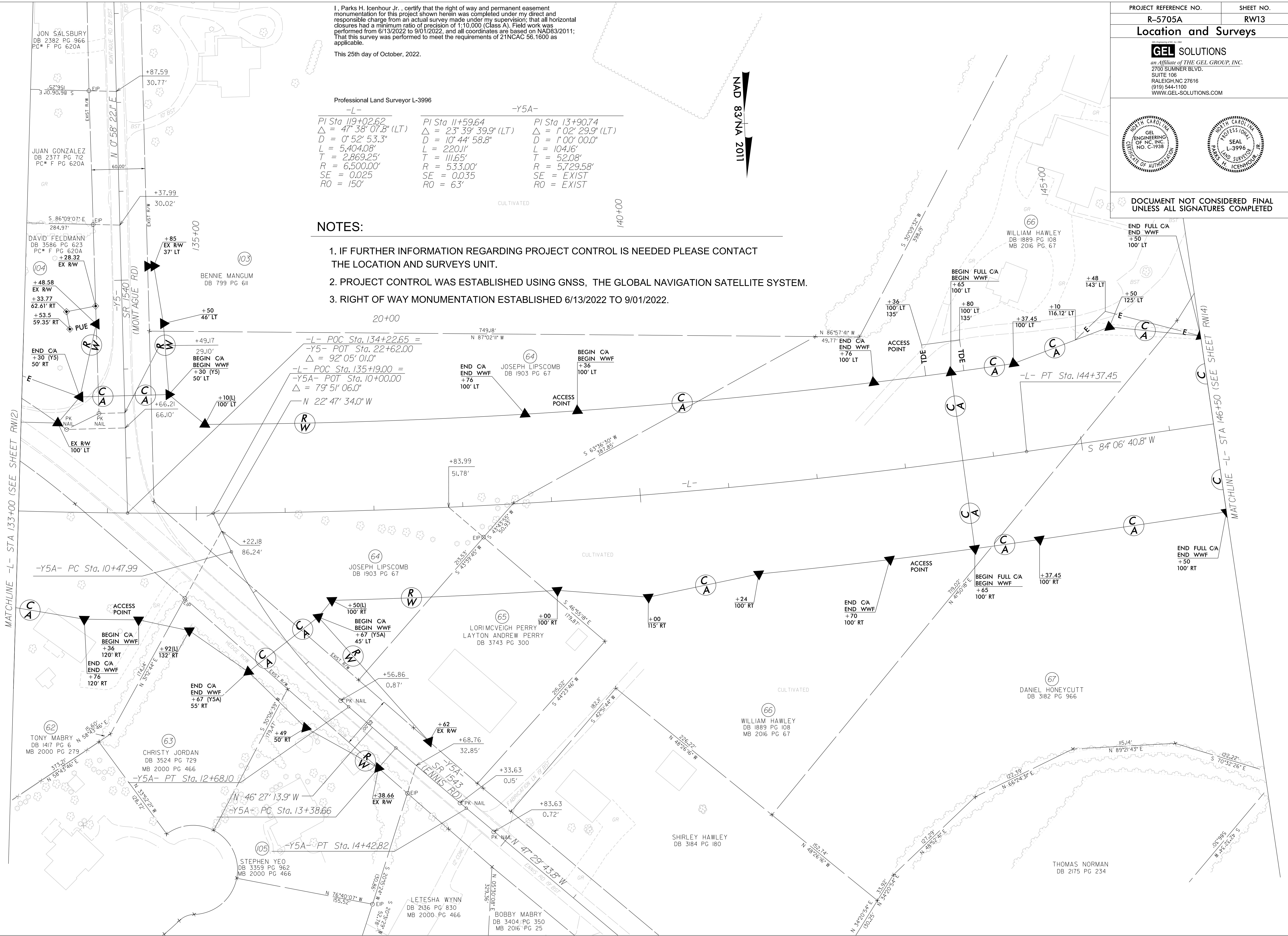
Professional Land Surveyor L-3996

| -L- | -Y5A- | -Y5A- |
|--------------------------------------|--------------------------------------|-------------------------------------|
| PI Sta 119+02.62 | PI Sta 11+59.64 | PI Sta 13+90.74 |
| $\Delta = 47^{\circ} 38' 07.8" (LT)$ | $\Delta = 23^{\circ} 39' 39.9" (LT)$ | $\Delta = 1^{\circ} 02' 29.9" (LT)$ |
| $D = 0^{\circ} 52' 53.3"$ | $D = 10^{\circ} 44' 58.8"$ | $D = 1^{\circ} 00' 00.0"$ |
| $L = 5,404.08'$ | $L = 220.11'$ | $L = 104.16'$ |
| $T = 2,869.25'$ | $T = 111.65'$ | $T = 52.08'$ |
| $R = 6,500.00'$ | $R = 533.00'$ | $R = 5,729.58'$ |
| $SE = 0.025$ | $SE = 0.035$ | $SE = EXIST$ |
| $RO = 150'$ | $RO = 63'$ | $RO = EXIST$ |

NOTES:

1. IF FURTHER INFORMATION REGARDING PROJECT CONTROL IS NEEDED PLEASE CONTACT THE LOCATION AND SURVEYS UNIT.
2. PROJECT CONTROL WAS ESTABLISHED USING GNSS, THE GLOBAL NAVIGATION SATELLITE SYSTEM.
3. RIGHT OF WAY MONUMENTATION ESTABLISHED 6/13/2022 TO 9/01/2022.

REVISIONS

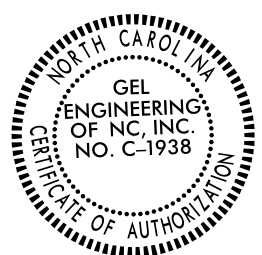


24-OCT-2022 13:53 C:\GEL\Projects\2022\R-5705A_ROW\5705A.LS.rw13.dgn
 Jason P. Priddy

6/2/09

Location and Surveys

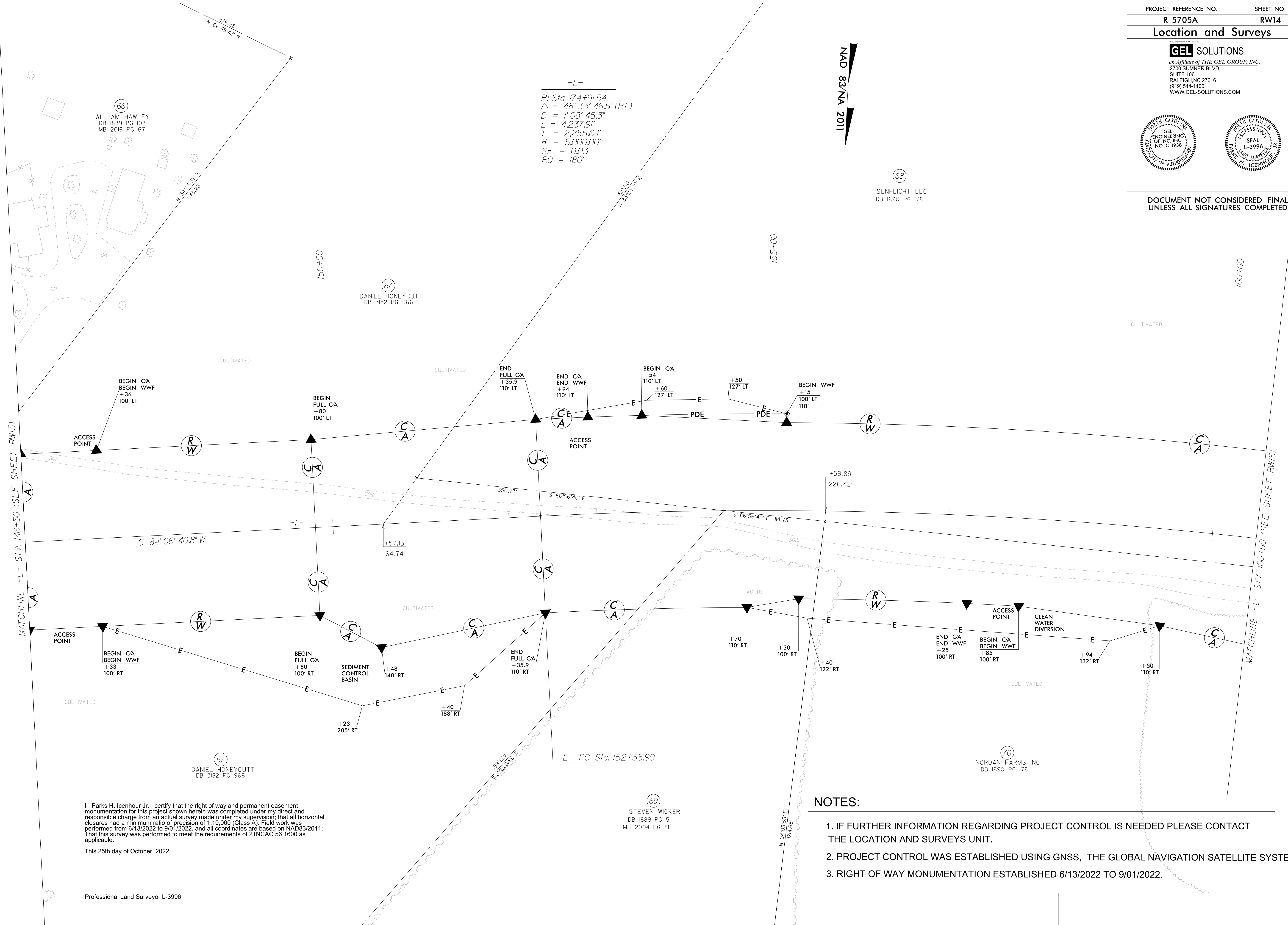
GEL SOLUTIONS
 an Affiliate of THE GEL GROUP, INC.
 2700 SUMNER BLVD.
 SUITE 106
 RALEIGH, NC 27616
 (919) 544-1100
 WWW.GEL-SOLUTIONS.COM



DOCUMENT NOT CONSIDERED FINAL UNLESS ALL SIGNATURES COMPLETED

REVISIONS

C:\GEL\2022\13154\2022-R-5705A_ROW-V-5705.r.w.sheets\F5705A_Ls_rw14.dgn
 C:\GEL\2022\13154\2022-R-5705A_ROW-V-5705.r.w.sheets\F5705A_Ls_rw14.dgn
 Jason Prevatt
 At Desk Top - EPRVSVF



-L-
 PI Sta 174+91.54
 $\Delta = 48^{\circ} 33' 46.5''$ (RT)
 $D = 1^{\circ} 08' 45.3''$
 $L = 4,237.91'$
 $T = 2,255.64'$
 $R = 5,000.00'$
 $SE = 0.03$
 $RO = 180^{\circ}$

NAD 83/NA 2011

I, Parks H. Icenhour Jr., certify that the right of way and permanent easement monumentation for this project shown herein was completed under my direct and responsible charge from an actual survey made under my supervision; that all horizontal closures had a minimum ratio of precision of 1:10,000 (Class A). Field work was performed from 6/13/2022 to 9/01/2022, and all coordinates are based on NAD83/2011; That this survey was performed to meet the requirements of 21NCAC 56.1600 as applicable.

This 25th day of October, 2022.

Professional Land Surveyor L-3996

NOTES:

1. IF FURTHER INFORMATION REGARDING PROJECT CONTROL IS NEEDED PLEASE CONTACT THE LOCATION AND SURVEYS UNIT.
2. PROJECT CONTROL WAS ESTABLISHED USING GNSS, THE GLOBAL NAVIGATION SATELLITE SYSTEM.
3. RIGHT OF WAY MONUMENTATION ESTABLISHED 6/13/2022 TO 9/01/2022.

Location and Surveys

GEL SOLUTIONS
 an Affiliate of THE GEL GROUP, INC.
 2700 SUMNER BLVD.
 SUITE 106
 RALEIGH, NC 27616
 (919) 544-1100
 WWW.GEL-SOLUTIONS.COM



DOCUMENT NOT CONSIDERED FINAL UNLESS ALL SIGNATURES COMPLETED

I, Parks H. Icenhour Jr., certify that the right of way and permanent easement monumentation for this project shown herein was completed under my direct and responsible charge from an actual survey made under my supervision; that all horizontal closures had a minimum ratio of precision of 1:10,000 (Class A). Field work was performed from 6/13/2022 to 9/01/2022, and all coordinates are based on NAD83/2011; That this survey was performed to meet the requirements of 21NCAC 56.1600 as applicable.

This 25th day of October, 2022.

Professional Land Surveyor L-3996

NOTES:

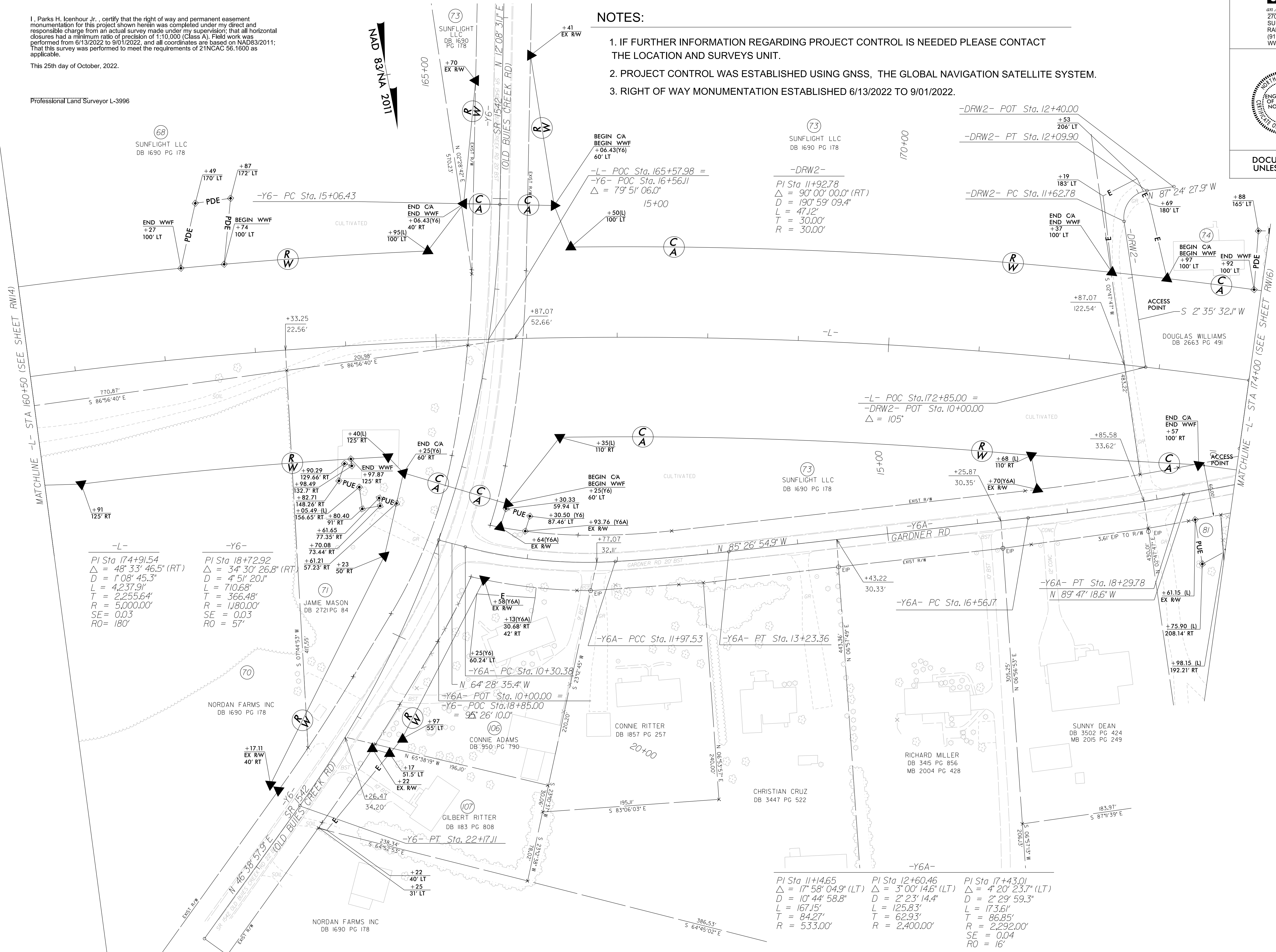
1. IF FURTHER INFORMATION REGARDING PROJECT CONTROL IS NEEDED PLEASE CONTACT THE LOCATION AND SURVEYS UNIT.
2. PROJECT CONTROL WAS ESTABLISHED USING GNSS, THE GLOBAL NAVIGATION SATELLITE SYSTEM.
3. RIGHT OF WAY MONUMENTATION ESTABLISHED 6/13/2022 TO 9/01/2022.

REVISIONS

MATCHLINE -L- STA 160+50 (SEE SHEET RW14)

MATCHLINE -L- STA 174+00 (SEE SHEET RW16)

24-OCT-2022 13:55 C:\GEL\Projects\2022\R-5705A_ROW\5705A.rw.sheets\R5705A_Ls.rw15.dgn
 Jason Prevatt



| | | | | |
|---|---|--|---|--|
| -L- PI Sta 17.4+91.54 Δ = 48° 33' 46.5" (RT) D = 1' 08" 45.3" L = 4,237.91' T = 2,255.64' R = 5,000.00' SE = 0.03 RO = 180' | -Y6- PI Sta 18+72.92 Δ = 34° 30' 26.8" (RT) D = 4' 51" 20.1" L = 710.68' T = 366.48' R = 1,180.00' SE = 0.03 RO = 57' | -Y6A- PI Sta 11+4.65 Δ = 17° 58' 04.9" (LT) D = 10' 44" 58.8" L = 167.15' T = 84.27' R = 533.00' | -Y6A- PI Sta 12+60.46 Δ = 3° 00' 14.6" (LT) D = 2' 23" 14.4" L = 125.83' T = 62.93' R = 2,400.00' | -Y6A- PI Sta 17+43.01 Δ = 4° 20' 23.7" (LT) D = 2' 29" 59.3" L = 173.61' T = 86.85' R = 2,292.00' SE = 0.04 RO = 16' |
|---|---|--|---|--|

-L-
 PI Sta 174+91.54
 $\Delta = 48^{\circ} 33' 46.5" (RT)$
 $D = 1^{\circ} 08' 45.3"$
 $L = 4,237.91'$
 $T = 2,255.64'$
 $R = 5,000.00'$
 $SE = 0.03$
 $RO = 180'$

-DRW3-
 PI Sta 10+85.01
 $\Delta = 13^{\circ} 30' 27.9" (LT)$
 $D = 76^{\circ} 23' 39.7"$
 $L = 17.68'$
 $T = 8.88'$
 $R = 75.00'$

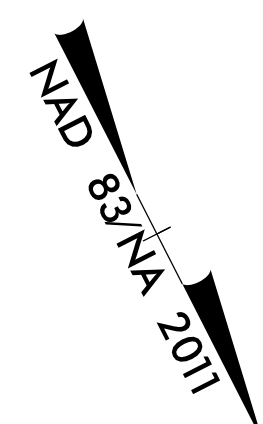
-DRW4-
 PI Sta 11+11.36
 $\Delta = 81^{\circ} 02' 19.7" (RT)$
 $D = 286^{\circ} 28' 44.0"$
 $L = 28.29'$
 $T = 17.09'$
 $R = 20.00'$

I, Parks H. Icenhour Jr., certify that the right of way and permanent easement monumentation for this project shown herein was completed under my direct and responsible charge from an actual survey made under my supervision; that all horizontal closures had a minimum ratio of precision of 1:10,000 (Class A). Field work was performed from 6/13/2022 to 9/01/2022, and all coordinates are based on NAD83/2011; That this survey was performed to meet the requirements of 21NCAC 56.1600 as applicable.

This 25th day of October, 2022.

Professional Land Surveyor L-3996

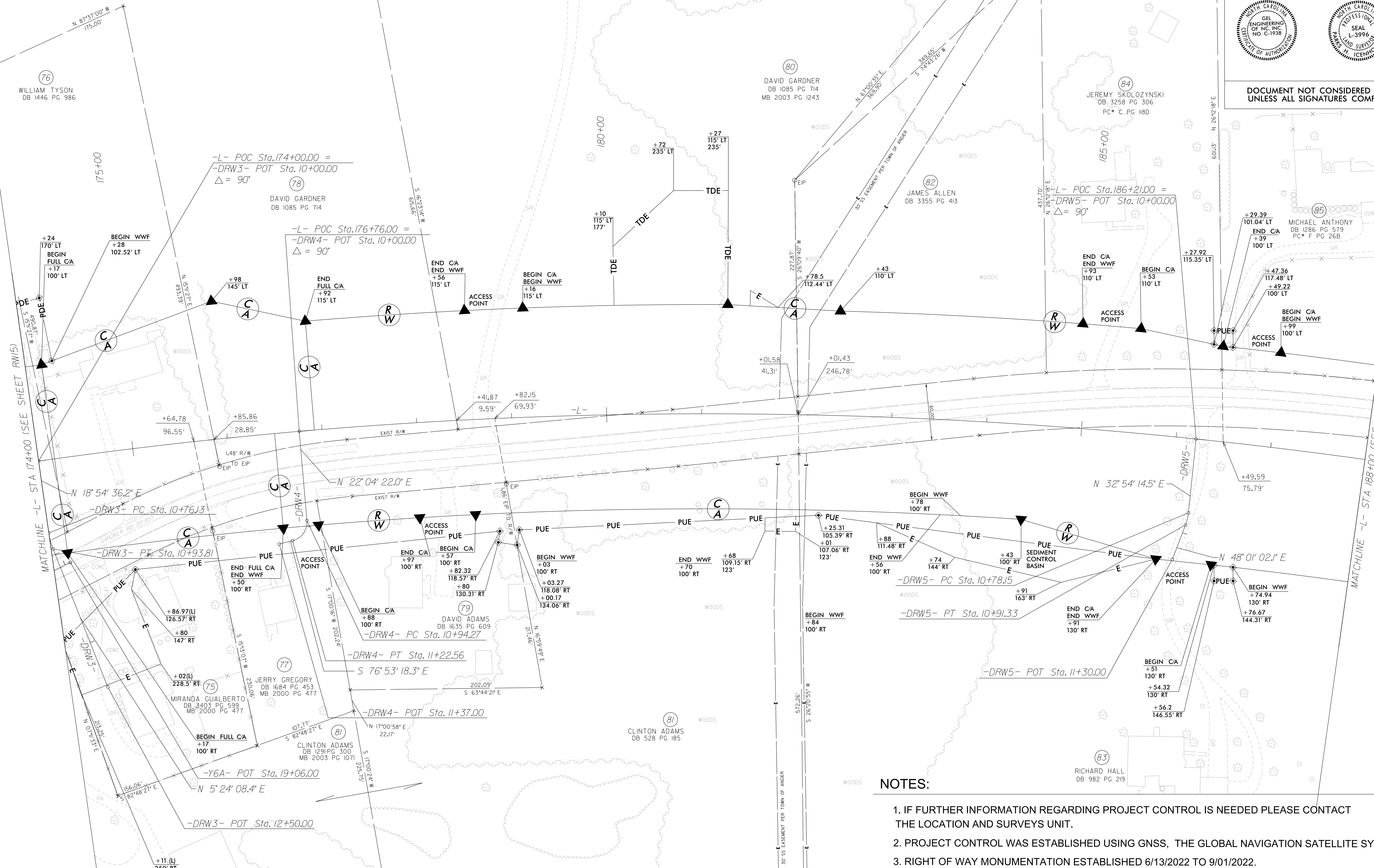
-DRW5-
 PI Sta 10+84.78
 $\Delta = 15^{\circ} 06' 47.6" (RT)$
 $D = 114^{\circ} 35' 29.6"$
 $L = 13.19'$
 $T = 6.63'$
 $R = 50.00'$



| | |
|---|-----------|
| PROJECT REFERENCE NO. | SHEET NO. |
| R-5705A | RW16 |
| Location and Surveys | |
| | |
| an Affiliate of THE GEL GROUP, INC. 2700 SUMNER BLVD. SUITE 106 RALEIGH, NC 27616 (919) 544-1100 WWW.GEL-SOLUTIONS.COM | |
| | |
| | |
| DOCUMENT NOT CONSIDERED FINAL UNLESS ALL SIGNATURES COMPLETED | |

REVISIONS

MATCHLINE -L- STA 188+00 (SEE SHEET RW17)



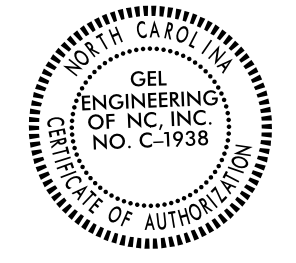
- NOTES:**
1. IF FURTHER INFORMATION REGARDING PROJECT CONTROL IS NEEDED PLEASE CONTACT THE LOCATION AND SURVEYS UNIT.
 2. PROJECT CONTROL WAS ESTABLISHED USING GNSS, THE GLOBAL NAVIGATION SATELLITE SYSTEM.
 3. RIGHT OF WAY MONUMENTATION ESTABLISHED 6/13/2022 TO 9/01/2022.

24-OCT-2022 14:54
 C:\GEL\elect\2022\R-5705A_ROW\5705.r.w.sheets\R5705A.Ls.r.w16.dgn
 AT DESKTOP-ERRYSVF
 Jason Prévaille

Location and Surveys

GEL SOLUTIONS

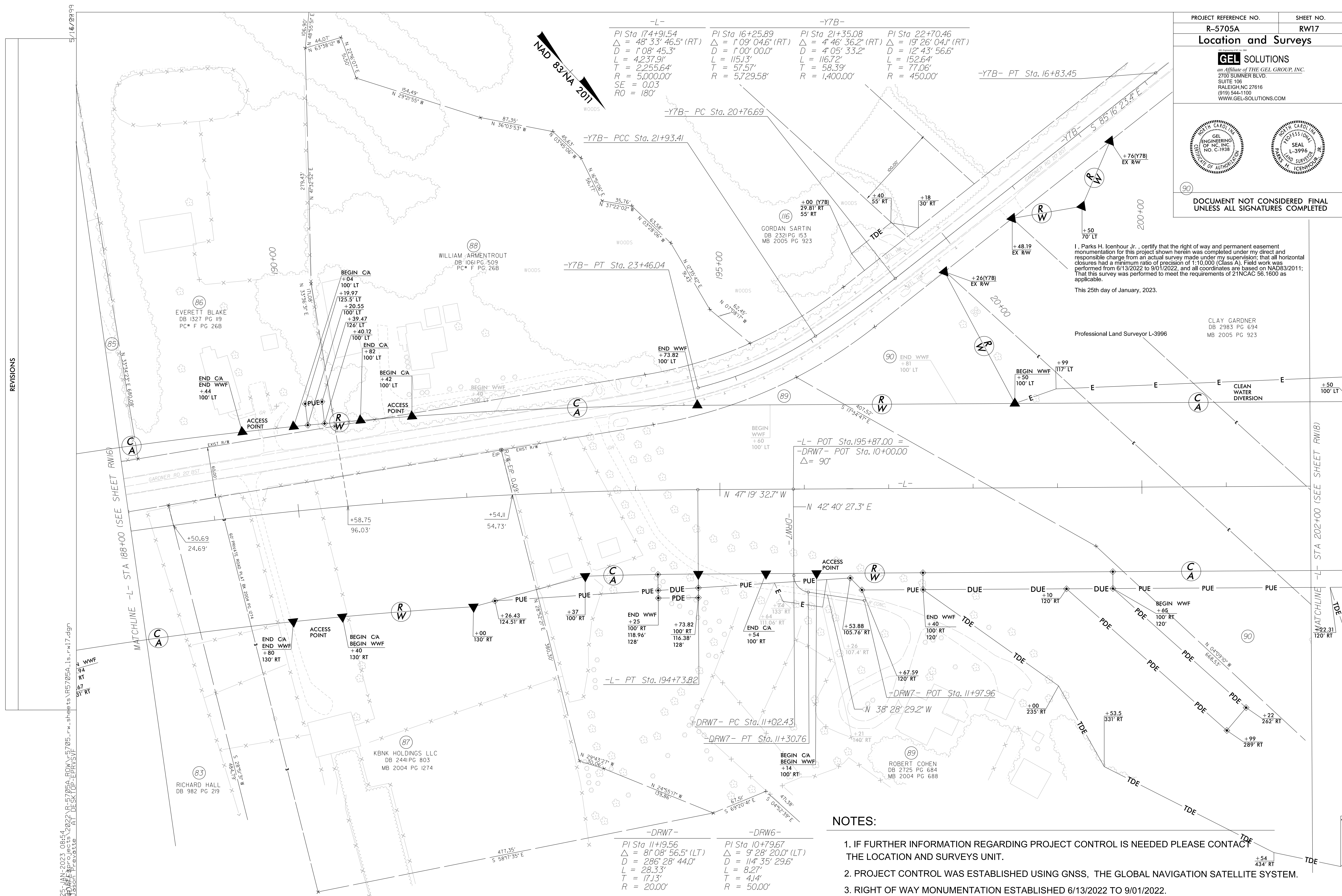
An Affiliate of THE GEL GROUP, INC.
2700 SUMNER BLVD.
SUITE 106
RALEIGH, NC 27616
(919) 544-1100
WWW.GEL-SOLUTIONS.COM



DOCUMENT NOT CONSIDERED FINAL UNLESS ALL SIGNATURES COMPLETED

I, Parks H. Icenhour, Jr., certify that the right of way and permanent easement monumentation for this project shown herein was completed under my direct and responsible charge from an actual survey made under my supervision; that all horizontal closures had a minimum ratio of precision of 1:10,000 (Class A). Field work was performed from 6/13/2022 to 9/01/2022, and all coordinates are based on NAD83/2011; That this survey was performed to meet the requirements of 21NCAC 56.1600 as applicable.
This 25th day of January, 2023.

CLAY GARDNER
DB 2983 PG 694
MB 2005 PG 923
Professional Land Surveyor L-3996



| -L- | -Y7B- | -Y7B- | -Y7B- |
|--|---|---|---|
| PI Sta 174+91.54 $\Delta = 48' 33' 46.5'' (RT)$ $D = 1' 08' 45.3''$ $L = 4,237.91'$ $T = 2,255.64'$ $R = 5,000.00'$ $SE = 0.03$ $RO = 180'$ | PI Sta 16+25.89 $\Delta = 1' 09' 04.6'' (RT)$ $D = 1' 00' 00.0''$ $L = 115.13'$ $T = 57.57'$ $R = 5,729.58'$ | PI Sta 21+35.08 $\Delta = 4' 46' 36.2'' (RT)$ $D = 4' 05' 33.2''$ $L = 116.72'$ $T = 58.39'$ $R = 1,400.00'$ | PI Sta 22+70.46 $\Delta = 19' 26' 04.1'' (RT)$ $D = 12' 43' 56.6''$ $L = 152.64'$ $T = 77.06'$ $R = 450.00'$ |

-L- POT Sta. 195+87.00 =
-DRW7- POT Sta. 10+00.00
 $\Delta = 90'$

-L- PT Sta. 194+73.82

-DRW7- PC Sta. 11+02.43
-DRW7- PT Sta. 11+30.76

-DRW7- POT Sta. 11+97.96

-DRW7-
PI Sta 11+19.56
 $\Delta = 81' 08' 56.5'' (LT)$
 $D = 286' 28' 44.0''$
 $L = 28.33'$
 $T = 17.13'$
 $R = 20.00'$

-DRW6-
PI Sta 10+79.67
 $\Delta = 9' 28' 20.0'' (LT)$
 $D = 114' 35' 29.6''$
 $L = 8.27'$
 $T = 4.14'$
 $R = 50.00'$

NOTES:

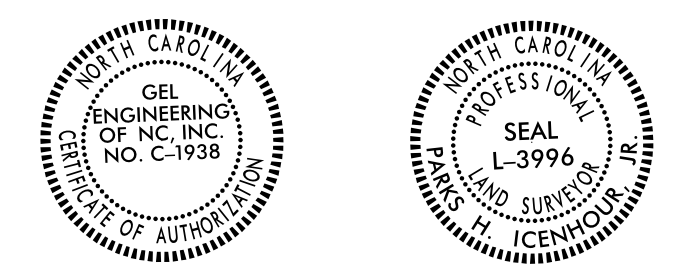
- 1. IF FURTHER INFORMATION REGARDING PROJECT CONTROL IS NEEDED PLEASE CONTACT THE LOCATION AND SURVEYS UNIT.
- 2. PROJECT CONTROL WAS ESTABLISHED USING GNSS, THE GLOBAL NAVIGATION SATELLITE SYSTEM.
- 3. RIGHT OF WAY MONUMENTATION ESTABLISHED 6/13/2022 TO 9/01/2022.

05 - JAN - 2023 08:54
C:\R-5705A-RW17.dgn
05 - JAN - 2023 08:54
C:\R-5705A-RW17.dgn
05 - JAN - 2023 08:54
C:\R-5705A-RW17.dgn

REVISIONS

Location and Surveys

GEL SOLUTIONS
an Affiliate of THE GEL GROUP, INC.
2700 SUMNER BLVD.
SUITE 106
RALEIGH, NC 27616
(919) 844-1100
WWW.GEL-SOLUTIONS.COM

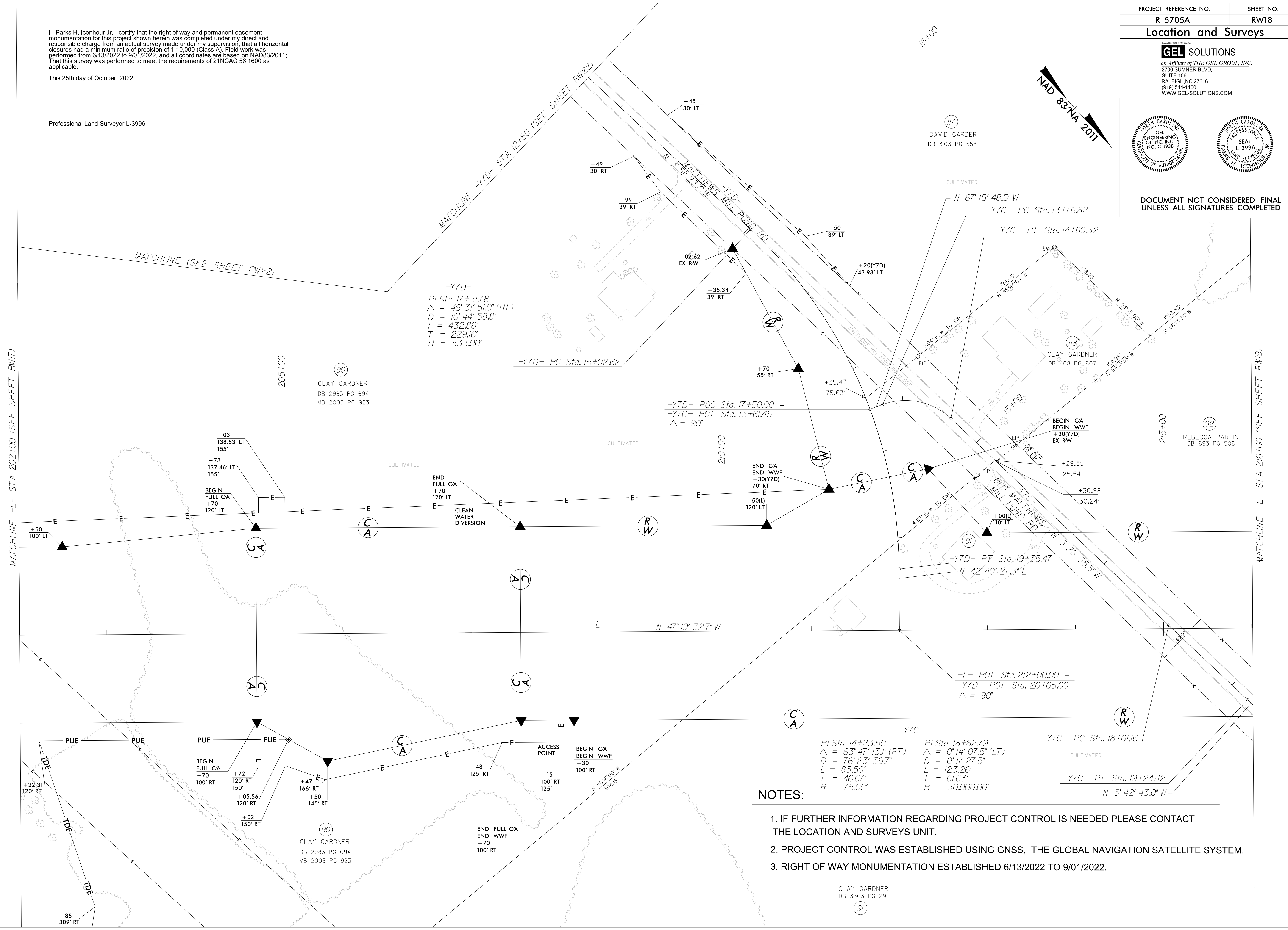


DOCUMENT NOT CONSIDERED FINAL UNLESS ALL SIGNATURES COMPLETED

I, Parks H. Icenhour Jr., certify that the right of way and permanent easement monumentation for this project shown herein was completed under my direct and responsible charge from an actual survey made under my supervision...

This 25th day of October, 2022.

Professional Land Surveyor L-3996



-Y7D-
PI Sta 17+31.78
Delta = 46' 31" 51.0" (RT)
D = 10' 44" 58.8"
L = 432.86'
T = 229.16'
R = 533.00'

-Y7D- POC Sta. 17+50.00 =
-Y7C- POT Sta. 13+61.45
Delta = 90°

-Y7C-
PI Sta 14+23.50
Delta = 63' 47" 13.1" (RT)
D = 76' 23' 39.7"
L = 83.50'
T = 46.67'
R = 75.00'

PI Sta 18+62.79
Delta = 0' 14" 07.5" (LT)
D = 0' 11" 27.5"
L = 123.26'
T = 61.63'
R = 30,000.00'

-Y7C- PC Sta. 18+01.16
-Y7C- PT Sta. 19+24.42
N 3' 42' 43.0" W

NOTES:

- 1. IF FURTHER INFORMATION REGARDING PROJECT CONTROL IS NEEDED PLEASE CONTACT THE LOCATION AND SURVEYS UNIT.
2. PROJECT CONTROL WAS ESTABLISHED USING GNSS, THE GLOBAL NAVIGATION SATELLITE SYSTEM.
3. RIGHT OF WAY MONUMENTATION ESTABLISHED 6/13/2022 TO 9/01/2022.

CLAY GARDNER
DB 3363 PG 296
(9)

REVISIONS

C:\GEL\2022\1345\2022\R-5705A_ROW\5705A_Ls_rw18.dgn
C:\GEL\2022\1345\2022\R-5705A_ROW\5705A_Ls_rw18.dgn
AT DESKTOP-EPRI\SVP
Jason Private

| | |
|---|--------------------------|
| PROJECT REFERENCE NO. R-5705A | SHEET NO. RW19 |
| Location and Surveys | |
| an Affiliate of THE GEL GROUP, INC. 2700 SUMNER BLVD. SUITE 106 RALEIGH, NC 27616 (919) 544-1100 WWW.GEL-SOLUTIONS.COM | |
| | |
| DOCUMENT NOT CONSIDERED FINAL UNLESS ALL SIGNATURES COMPLETED | |

NOTES:

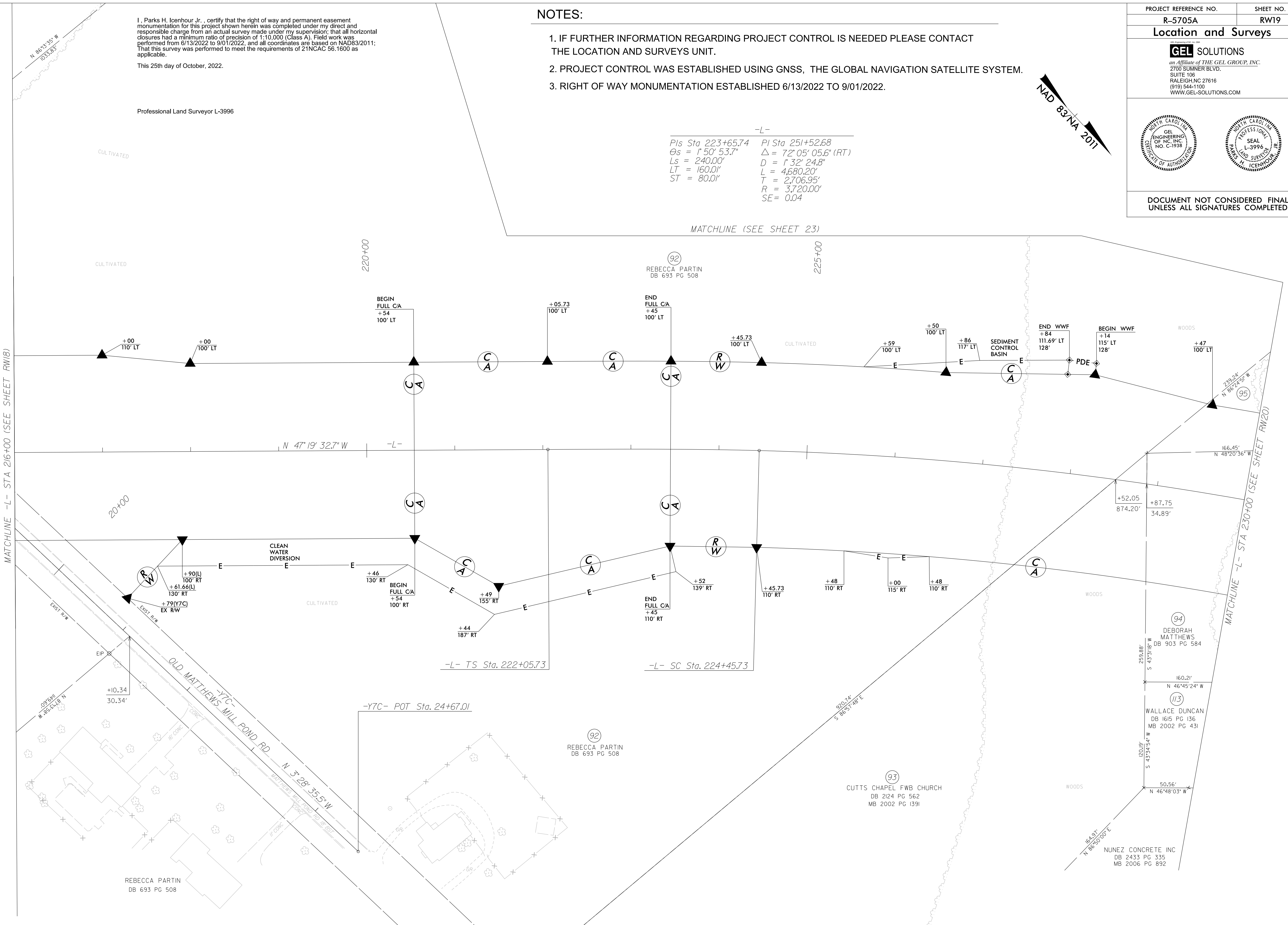
- IF FURTHER INFORMATION REGARDING PROJECT CONTROL IS NEEDED PLEASE CONTACT THE LOCATION AND SURVEYS UNIT.
- PROJECT CONTROL WAS ESTABLISHED USING GNSS, THE GLOBAL NAVIGATION SATELLITE SYSTEM.
- RIGHT OF WAY MONUMENTATION ESTABLISHED 6/13/2022 TO 9/01/2022.



-L-

| | |
|---------------------------|-------------------------------|
| <i>PIs Sta. 223+65.74</i> | <i>PI Sta. 251+52.68</i> |
| <i>θs = 1° 50' 53.7"</i> | <i>Δ = 72° 05' 05.6" (RT)</i> |
| <i>Ls = 240.00'</i> | <i>D = 1° 32' 24.8"</i> |
| <i>LT = 160.01'</i> | <i>L = 4,680.20'</i> |
| <i>ST = 80.01'</i> | <i>T = 2,706.95'</i> |
| | <i>R = 3,720.00'</i> |
| | <i>SE = 0.04</i> |

MATCHLINE (SEE SHEET 23)



I, Parks H. Ichnour Jr., certify that the right of way and permanent easement monumentation for this project shown herein was completed under my direct and responsible charge from an actual survey made under my supervision; that all horizontal closures had a minimum ratio of precision of 1:10,000 (Class A). Field work was performed from 6/13/2022 to 9/01/2022, and all coordinates are based on NAD83/2011; That this survey was performed to meet the requirements of 21NCAC 56.1600 as applicable.

This 25th day of October, 2022.

Professional Land Surveyor L-3996

REVISIONS

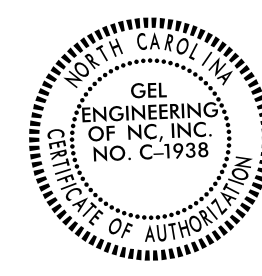
24-OCT-2022 14:00
 C:\GEL\Projects\2022\R-5705A-ROW\5705A.LS.rw19.dgn
 Jason Prevatt

REBECCA PARTIN
DB 693 PG 508

Location and Surveys

GEL SOLUTIONS

an Affiliate of THE GEL GROUP, INC.
 2700 SUMNER BLVD.
 SUITE 106
 RALEIGH, NC 27616
 (919) 544-1100
 WWW.GEL-SOLUTIONS.COM

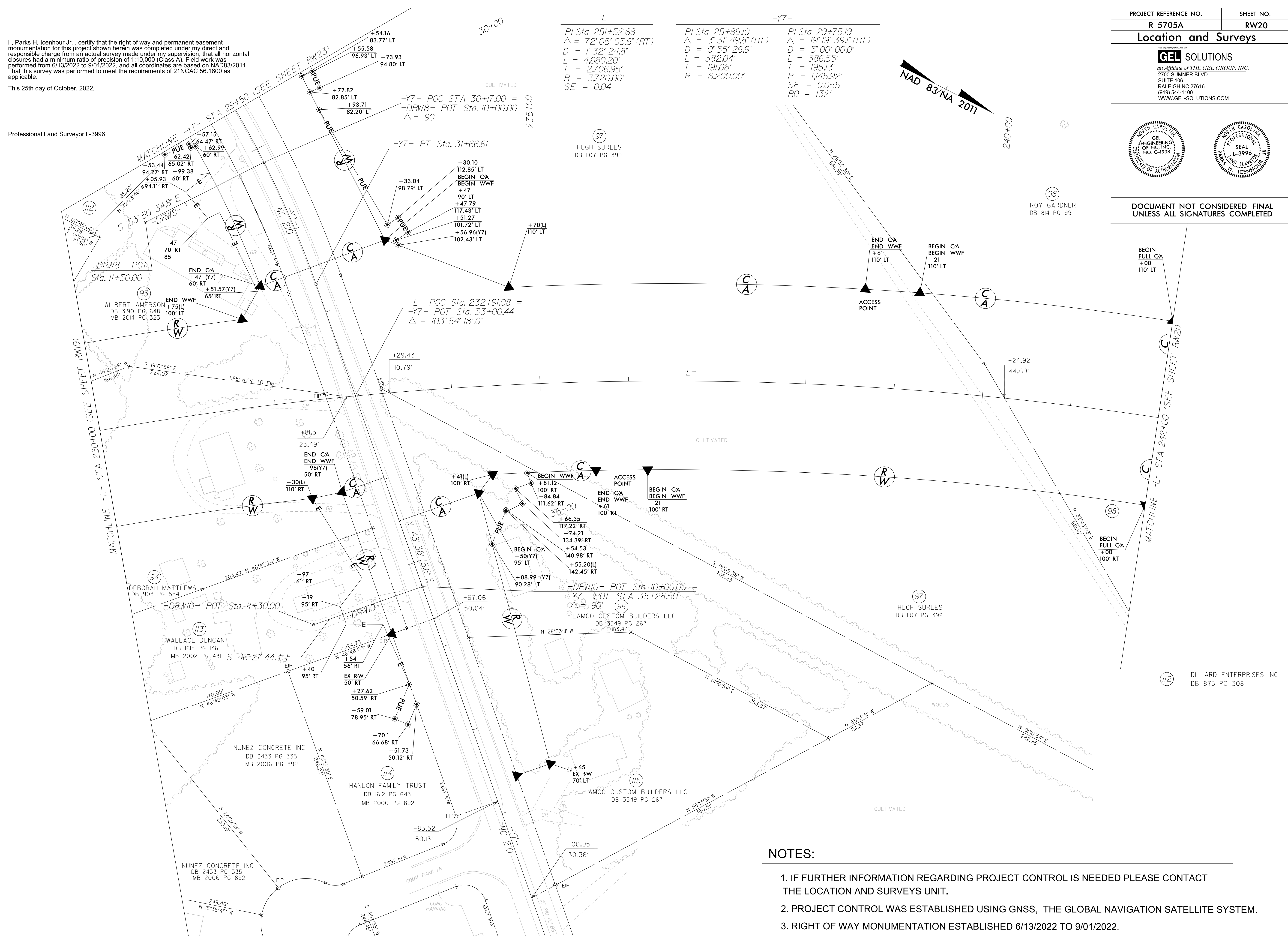


DOCUMENT NOT CONSIDERED FINAL UNLESS ALL SIGNATURES COMPLETED

I, Parks H. Icenhour Jr., certify that the right of way and permanent easement monumentation for this project shown herein was completed under my direct and responsible charge from an actual survey made under my supervision; that all horizontal closures had a minimum ratio of precision of 1:10,000 (Class A). Field work was performed from 6/13/2022 to 9/01/2022, and all coordinates are based on NAD83/2011; That this survey was performed to meet the requirements of 21NCAC 56.1600 as applicable.

This 25th day of October, 2022.

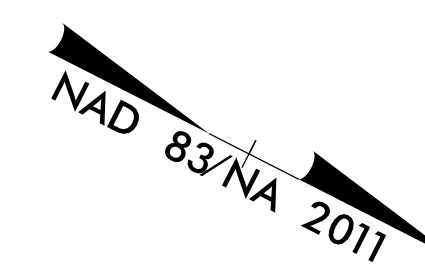
Professional Land Surveyor L-3996



-L-
 PI Sta. 251+52.68
 $\Delta = 72^{\circ} 05' 05.6''$ (RT)
 $D = 1^{\circ} 32' 24.8''$
 $L = 4,680.20'$
 $T = 2,706.95'$
 $R = 3,720.00'$
 $SE = 0.04$

-Y7-
 PI Sta. 25+89.10
 $\Delta = 3^{\circ} 31' 49.8''$ (RT)
 $D = 0^{\circ} 55' 26.9''$
 $L = 382.04'$
 $T = 191.08'$
 $R = 6,200.00'$

-Y7-
 PI Sta. 29+75.19
 $\Delta = 19^{\circ} 19' 39.1''$ (RT)
 $D = 5^{\circ} 00' 00.0''$
 $L = 386.55'$
 $T = 195.13'$
 $R = 1,445.92'$
 $SE = 0.055$
 $RO = 132'$



REVISIONS

24-10-2022 14:01
 6/2/2019
 2022 R-5705A-RW-5705.r.w.sheets\F5705A.LS.r.w.20.dgn
 AT DESKTOP-ERRYSVF
 User: P-icenthou

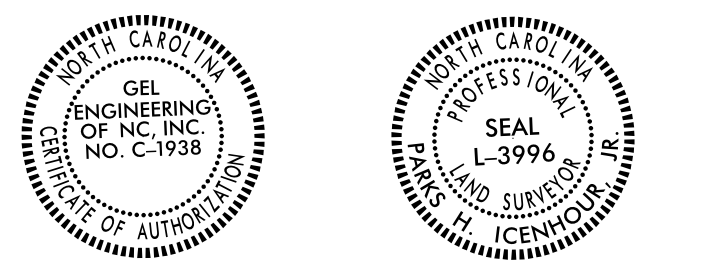
NOTES:

1. IF FURTHER INFORMATION REGARDING PROJECT CONTROL IS NEEDED PLEASE CONTACT THE LOCATION AND SURVEYS UNIT.
2. PROJECT CONTROL WAS ESTABLISHED USING GNSS, THE GLOBAL NAVIGATION SATELLITE SYSTEM.
3. RIGHT OF WAY MONUMENTATION ESTABLISHED 6/13/2022 TO 9/01/2022.

6/2/09

Location and Surveys

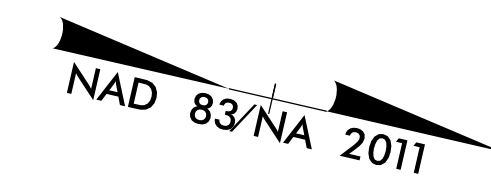
GEL SOLUTIONS
 an Affiliate of THE GEL GROUP, INC.
 2700 SUMNER BLVD.
 SUITE 106
 RALEIGH, NC 27616
 (919) 544-1100
 WWW.GEL-SOLUTIONS.COM



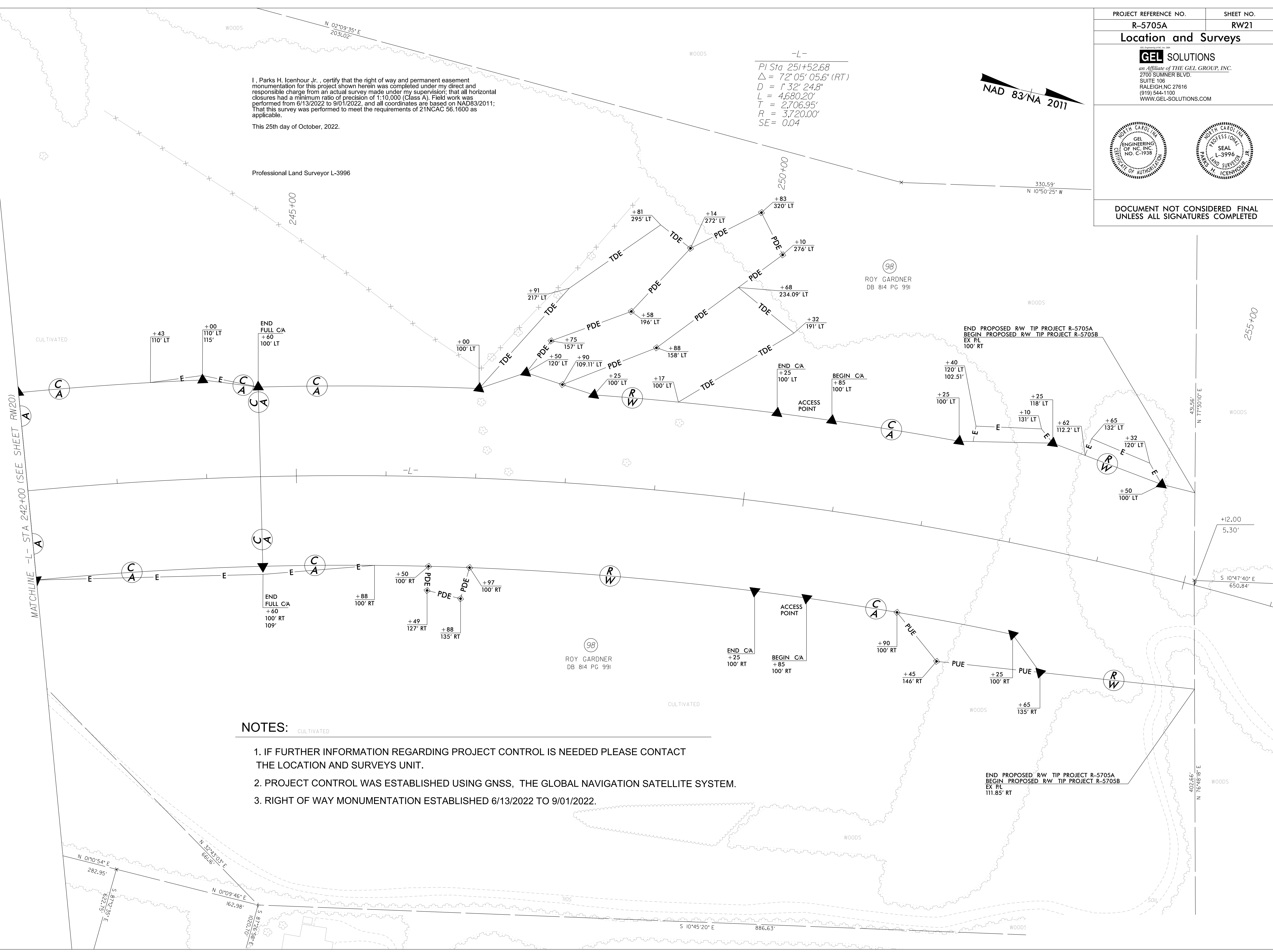
DOCUMENT NOT CONSIDERED FINAL UNLESS ALL SIGNATURES COMPLETED

I, Parks H. Icenhour Jr., certify that the right of way and permanent easement monumentation for this project shown herein was completed under my direct and responsible charge from an actual survey made under my supervision; that all horizontal closures had a minimum ratio of precision of 1:10,000 (Class A). Field work was performed from 6/13/2022 to 9/01/2022, and all coordinates are based on NAD83/2011; That this survey was performed to meet the requirements of 21NCAC 56.1600 as applicable.
 This 25th day of October, 2022.
 Professional Land Surveyor L-3996

-L-
 PI Sta 251+52.68
 $\Delta = 72^{\circ} 05' 05.6''$ (RT)
 $D = 1' 32'' 24.8''$
 $L = 4,680.20'$
 $T = 2,706.95'$
 $R = 3,720.00'$
 $SE = 0.04$



REVISIONS



NOTES:

1. IF FURTHER INFORMATION REGARDING PROJECT CONTROL IS NEEDED PLEASE CONTACT THE LOCATION AND SURVEYS UNIT.
2. PROJECT CONTROL WAS ESTABLISHED USING GNSS, THE GLOBAL NAVIGATION SATELLITE SYSTEM.
3. RIGHT OF WAY MONUMENTATION ESTABLISHED 6/13/2022 TO 9/01/2022.

24-OCT-2022 14:03
 C:\GEL\elect\2022\R-5705A-RW\5705.rw.sheets\F5705A_1s.rw21.dgn
 Jason Pruvitt
 AT DESKTOP-ERRVSVF

6/2/09

I, Parks H. Icenhour Jr., certify that the right of way and permanent easement monumentation for this project shown herein was completed under my direct and responsible charge from an actual survey made under my supervision; that all horizontal closures had a minimum ratio of precision of 1:10,000 (Class A). Field work was performed from 6/13/2022 to 9/01/2022, and all coordinates are based on NAD83/2011; That this survey was performed to meet the requirements of 21NCAC 56.1600 as applicable.

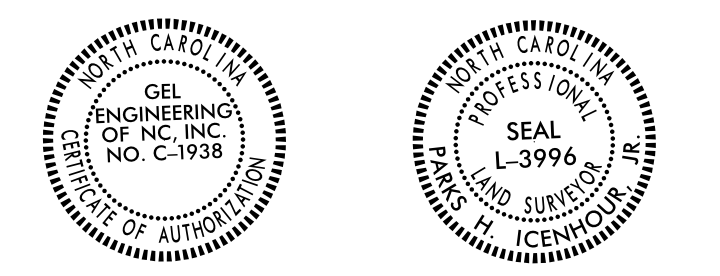
This 25th day of October, 2022.

Professional Land Surveyor L-3996

PROJECT REFERENCE NO. R-5705A SHEET NO. RW22

Location and Surveys

GEL SOLUTIONS an Affiliate of THE GEL GROUP, INC. 2700 SUMNER BLVD. SUITE 106 RALEIGH, NC 27616 (919) 544-1100 WWW.GEL-SOLUTIONS.COM

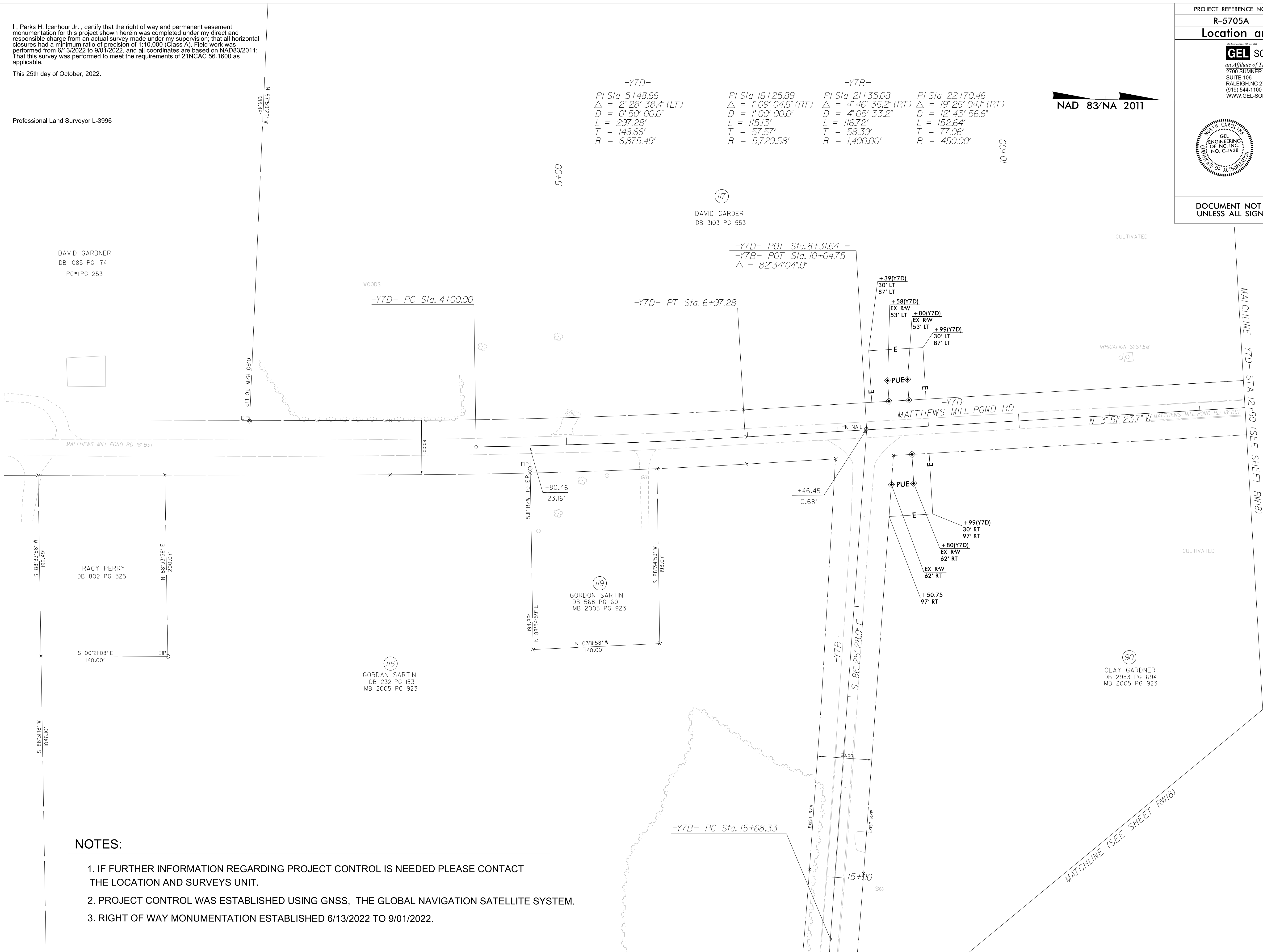


DOCUMENT NOT CONSIDERED FINAL UNLESS ALL SIGNATURES COMPLETED

NAD 83/NA 2011

| -Y7D- | -Y7B- | -Y7B- | -Y7B- |
|------------------------------|------------------------------|------------------------------|-------------------------------|
| PI Sta 5+48.66 | PI Sta 16+25.89 | PI Sta 21+35.08 | PI Sta 22+70.46 |
| $\Delta = 2' 28' 38.4" (LT)$ | $\Delta = 1' 09' 04.6" (RT)$ | $\Delta = 4' 46' 36.2" (RT)$ | $\Delta = 19' 26' 04.1" (RT)$ |
| $D = 0' 50' 00.0"$ | $D = 1' 00' 00.0"$ | $D = 4' 05' 33.2"$ | $D = 12' 43' 56.6"$ |
| $L = 297.28'$ | $L = 115.13'$ | $L = 116.72'$ | $L = 152.64'$ |
| $T = 148.66'$ | $T = 57.57'$ | $T = 58.39'$ | $T = 77.06'$ |
| $R = 6,875.49'$ | $R = 5,729.58'$ | $R = 1,400.00'$ | $R = 450.00'$ |

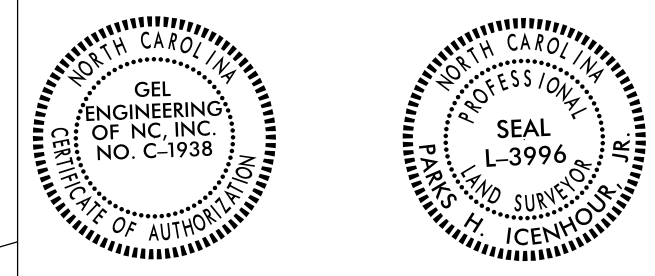
REVISIONS



NOTES:

1. IF FURTHER INFORMATION REGARDING PROJECT CONTROL IS NEEDED PLEASE CONTACT THE LOCATION AND SURVEYS UNIT.
2. PROJECT CONTROL WAS ESTABLISHED USING GNSS, THE GLOBAL NAVIGATION SATELLITE SYSTEM.
3. RIGHT OF WAY MONUMENTATION ESTABLISHED 6/13/2022 TO 9/01/2022.

C:\GEL\2022\1334\2022\R-5705A_ROW_V=5705.rw.sheets\F5705A_1s.rw22.dgn
C:\GEL\2022\1334\2022\R-5705A_ROW_V=5705.rw.sheets\F5705A_1s.rw22.dgn
Jason



**DOCUMENT NOT CONSIDERED FINAL
UNLESS ALL SIGNATURES COMPLETED**

I, Parks H. Icenhour Jr., certify that the right of way and permanent easement monumentation for this project shown herein was completed under my direct and responsible charge from an actual survey made under my supervision; that all horizontal closures had a minimum ratio of precision of 1:10,000 (Class A). Field work was performed from 6/13/2022 to 9/01/2022, and all coordinates are based on NAD83/2011; That this survey was performed to meet the requirements of 21NCAC 56.1600 as applicable.

This 25th day of October, 2022.

Professional Land Surveyor L-3996

-Y7-

| | |
|---|---|
| PI Sta 25+89.10 Δ = 3° 31' 49.8" (RT) D = 0° 55' 26.9" L = 382.04' T = 191.08' R = 6,200.00' | PI Sta 29+75.19 Δ = 19° 19' 39.1" (RT) D = 5° 00' 00.0" L = 386.55' T = 195.13' R = 1,145.92" SE = 0.055 RO = 132' |
|---|---|

-Y7A-

| |
|--|
| PI Sta 35+36.87 Δ = 79° 29' 31.6" (LT) D = 2° 29' 28.0" L = 3,191.02' T = 1,912.62' R = 2,300.00' SE = 0.05 RO = 135' |
|--|

108
NCD CONTRACTING LLC
DB 3852 PG 423
PB 2021 PG 563

JAMES JOHNSON
DB 1963 PG 136
MB 2014 PG 66

109
NCD CONTRACTING LLC
DB 4062 PG 344

KENNETH EDWARDS
DB 3551 PG 561
CONC MB 2004 PG 738

111
ROBERT SURLS
DB 537 PG 126

92
REBECCA PARTIN
DB 693 PG 508

108
NCD CONTRACTING LLC
DB 3852 PG 423
PB 2021 PG 563

112
DILLARD ENTERPRISES
INC
DB 875 PG 308

97
HUGH SURLS
DB 107 PG 399

NOTES:

1. IF FURTHER INFORMATION REGARDING PROJECT CONTROL IS NEEDED PLEASE CONTACT THE LOCATION AND SURVEYS UNIT.
2. PROJECT CONTROL WAS ESTABLISHED USING GNSS, THE GLOBAL NAVIGATION SATELLITE SYSTEM.
3. RIGHT OF WAY MONUMENTATION ESTABLISHED 6/13/2022 TO 9/01/2022.

REVISIONS

C:\GEL\2022\1404\2022-R-5705A-RW\1.rw.sheets\R5705A_1s.rw23.dgn
 Jason Prevatt

