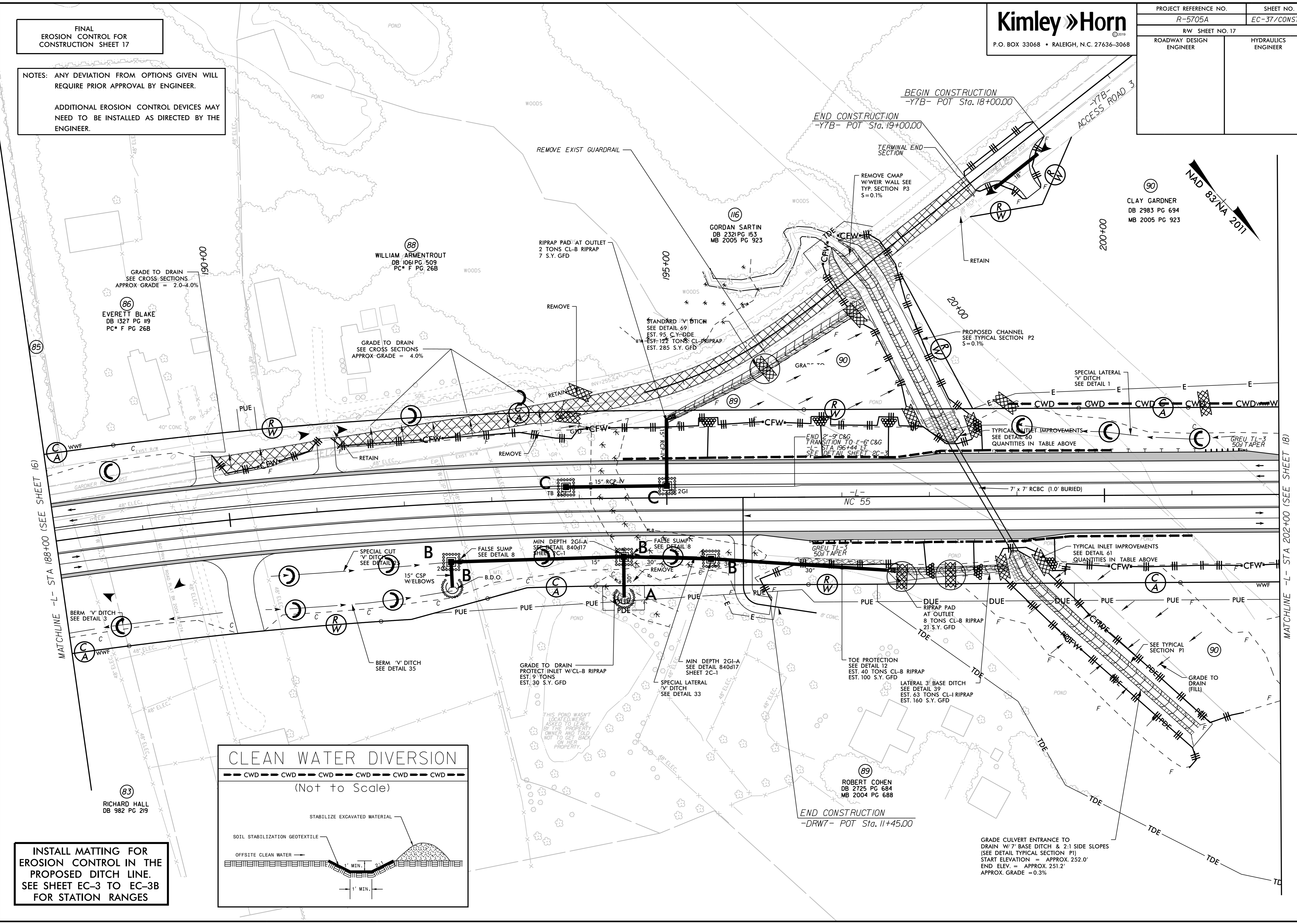


PROJECT REFERENCE NO. R-5705A	SHEET NO. EC-37/CONST.17
RW SHEET NO. 17	HYDRAULICS ENGINEER
ROADWAY DESIGN ENGINEER	

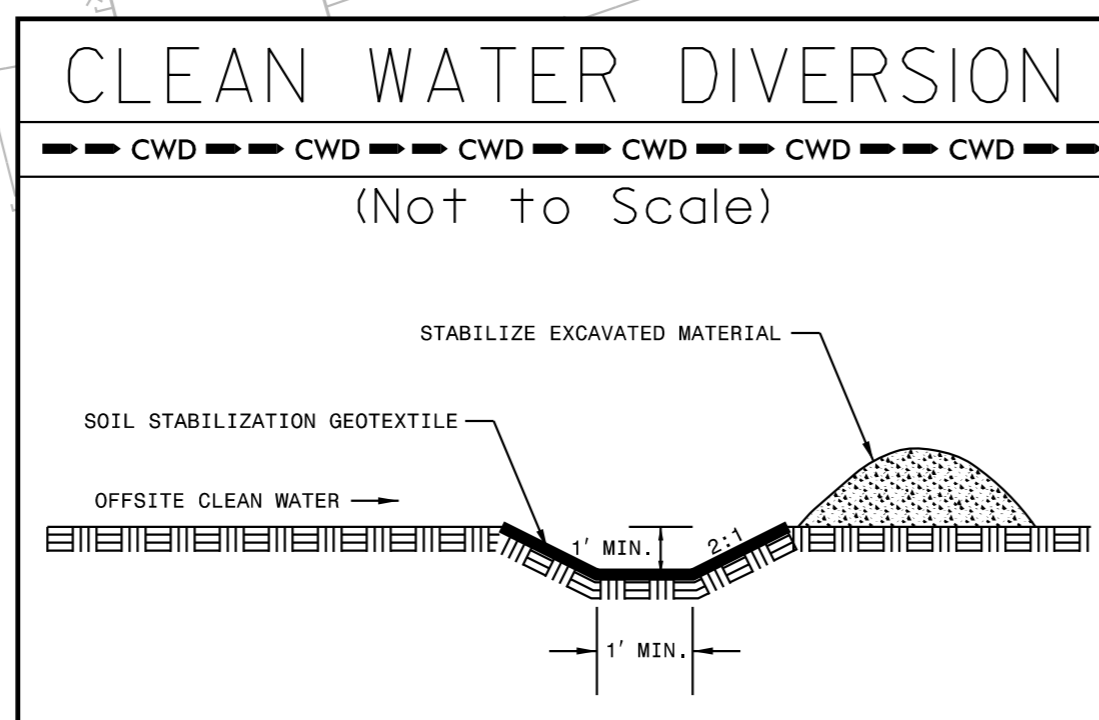
FINAL
EROSION CONTROL FOR
CONSTRUCTION SHEET 17

NOTES: ANY DEVIATION FROM OPTIONS GIVEN WILL
REQUIRE PRIOR APPROVAL BY ENGINEER.

ADDITIONAL EROSION CONTROL DEVICES MAY
NEED TO BE INSTALLED AS DIRECTED BY THE
ENGINEER.



INSTALL MATTING FOR
EROSION CONTROL IN THE
PROPOSED DITCH LINE.
SEE SHEET EC-3 TO EC-3B
FOR STATION RANGES



REVISIONS

MATCHLINE -L- STA 202+00 (SEE SHEET 18)

MATCHLINE -L- STA 188+00 (SEE SHEET 16)

NAD 83/NA 2011

90
CLAY GARDNER
DB 2983 PG 694
MB 2005 PG 923

116
GORDAN SARTIN
DB 2321 PG 153
MB 2005 PG 923

88
WILLIAM ARMENTROUT
DB 1061 PG 509
PC# F PG 268

86
EVERETT BLAKE
DB 1327 PG 119
PC# F PG 268

89
ROBERT COHEN
DB 2725 PG 684
MB 2004 PG 688

83
RICHARD HALL
DB 982 PG 219

THIS POND WASNT
LOCATED, WERE
ASKED TO LEAVE
BY THE PROPERTY
OWNER, AND TOLD
NOT TO GET BACK
ON HER PROPERTY.

GRADE CULVERT ENTRANCE TO
DRAIN W/7' BASE DITCH & 2:1 SIDE SLOPES
(SEE DETAIL TYPICAL SECTION P1)
START ELEVATION = APPROX. 252.0'
END ELEV. = APPROX. 251.2'
APPROX. GRADE = 0.3%