

5/14/99

FINAL
EROSION CONTROL FOR
CONSTRUCTION SHEET 4

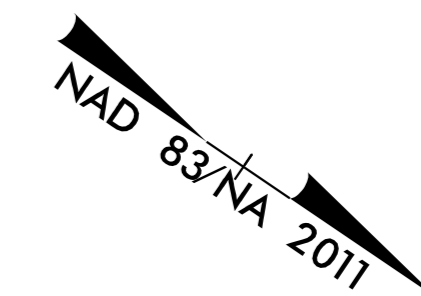
NOTES: ANY DEVIATION FROM OPTIONS GIVEN WILL
REQUIRE PRIOR APPROVAL BY ENGINEER.

ADDITIONAL EROSION CONTROL DEVICES MAY
NEED TO BE INSTALLED AS DIRECTED BY THE
ENGINEER.

Kimley » Horn

P.O. BOX 33068 • RALEIGH, N.C. 27636-3068

PROJECT REFERENCE NO. R-5705A	SHEET NO. EC-24/CONST.4
RW SHEET NO. 4	
ROADWAY DESIGN ENGINEER	HYDRAULICS ENGINEER



VAN COATS
DB 3459 PG 434
PB 2016 PG 364

(1A)
JAMES JOHNSON
DB 615 PG 21
PB 2016 PG 364

(1)
JAMES JOHNSON
DB 731 PG 732

(3)
TONY WARREN
DB 3271 PG 355

(5)
DANNY HEDGEPEETH
DB 926 PG 126
PC E PG 76A

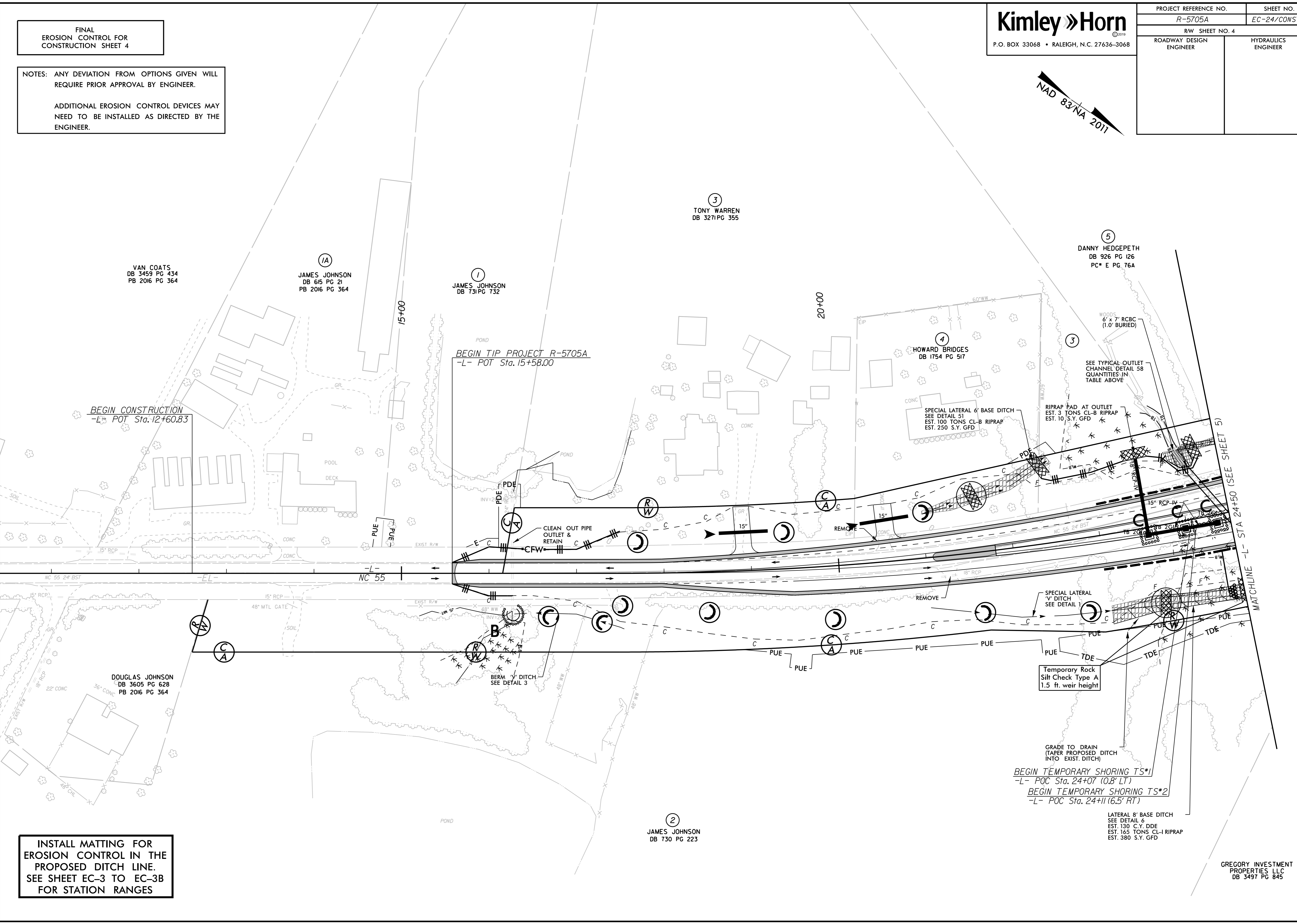
(4)
HOWARD BRIDGES
DB 1754 PG 517

BEGIN CONSTRUCTION
-L- POT Sta. 12+60.83

BEGIN TIP PROJECT R-5705A
-L- POT Sta. 15+58.00

MATCHLINE -L- STA 24+50 (SEE SHEET 5)

REVISIONS



INSTALL MATTING FOR
EROSION CONTROL IN THE
PROPOSED DITCH LINE.
SEE SHEET EC-3 TO EC-3B
FOR STATION RANGES

(2)
JAMES JOHNSON
DB 730 PG 223

BEGIN TEMPORARY SHORING TS*1
-L- POC Sta. 24+07 (0.8' LT)
BEGIN TEMPORARY SHORING TS*2
-L- POC Sta. 24+11 (6.5' RT)

LATERAL 8' BASE DITCH
SEE DETAIL 6
EST. 130 C.Y. DDE
EST. 165 TONS CL-I RIPRAP
EST. 380 S.Y. GFD

GREGORY INVESTMENT
PROPERTIES LLC
DB 3497 PG 845