

| | |
|-------------------------|---------------------|
| PROJECT REFERENCE NO. | SHEET NO. |
| R-5705A | EC-13/CONST.13 |
| RW SHEET NO. 13 | |
| ROADWAY DESIGN ENGINEER | HYDRAULICS ENGINEER |

Kimley » Horn

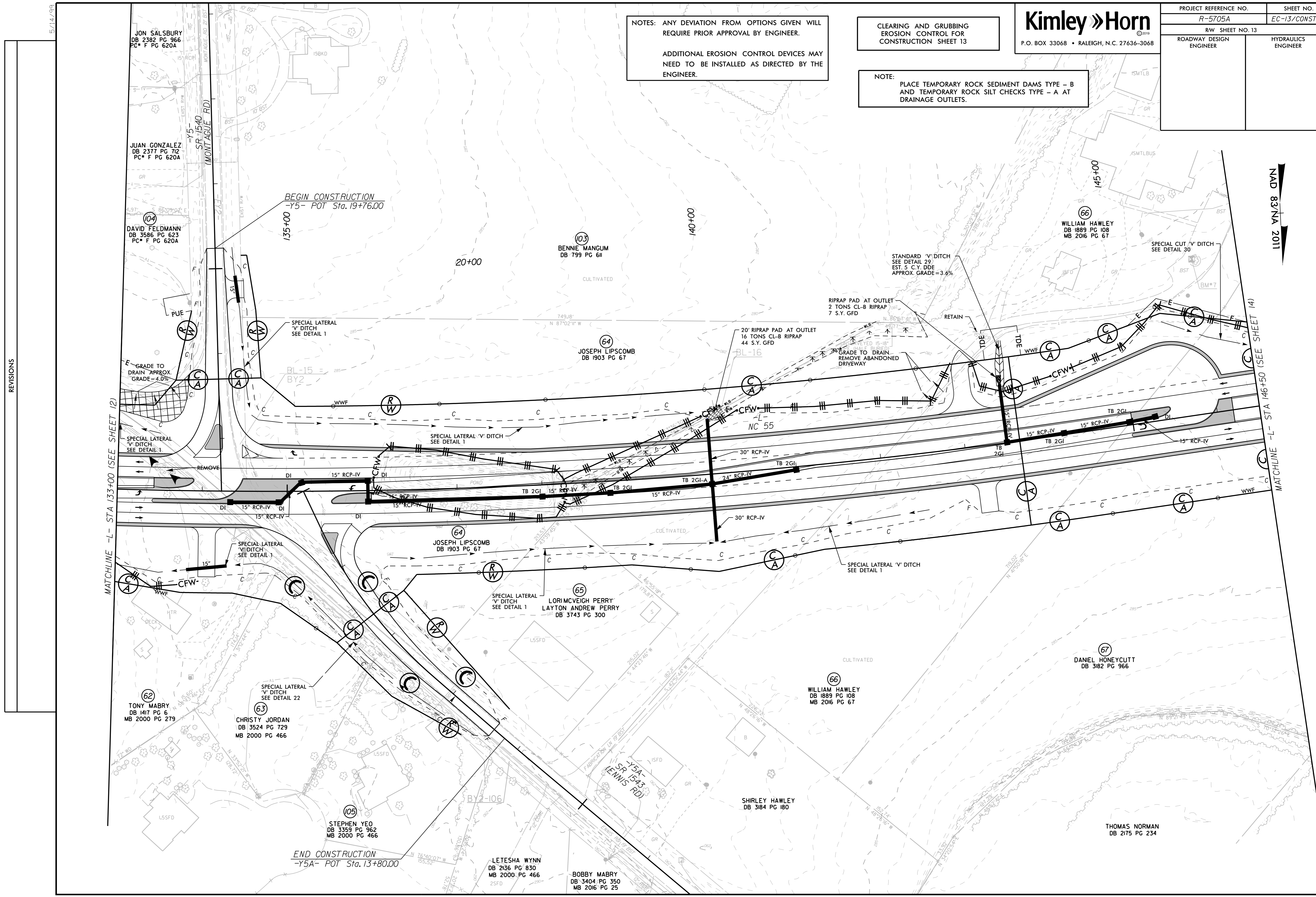
P.O. BOX 33068 • RALEIGH, N.C. 27636-3068

NOTES: ANY DEVIATION FROM OPTIONS GIVEN WILL REQUIRE PRIOR APPROVAL BY ENGINEER.

ADDITIONAL EROSION CONTROL DEVICES MAY NEED TO BE INSTALLED AS DIRECTED BY THE ENGINEER.

CLEARING AND GRUBBING EROSION CONTROL FOR CONSTRUCTION SHEET 13

NOTE: PLACE TEMPORARY ROCK SEDIMENT DAMS TYPE - B AND TEMPORARY ROCK SILT CHECKS TYPE - A AT DRAINAGE OUTLETS.



REVISIONS

NAD 83/NA 2011

MATCHLINE -L- STA 133+00 (SEE SHEET 12)

MATCHLINE -L- STA 146+50 (SEE SHEET 14)

JON SALSURBY
DB 2382 PG 966
PC* F PG 620A

JUAN GONZALEZ
DB 2377 PG 712
PC* F PG 620A

DAVID FELDMANN
DB 3586 PG 623
PC* F PG 620A

BENNIE MANGUM
DB 799 PG 61

JOSEPH LIPSCOMB
DB 1903 PG 67

WILLIAM HAWLEY
DB 1889 PG 108
MB 2016 PG 67

LORIMCVEIGH PERRY
LAYTON ANDREW PERRY
DB 3743 PG 300

TONY MABRY
DB 1417 PG 6
MB 2000 PG 279

CHRISTY JORDAN
DB 3524 PG 729
MB 2000 PG 466

WILLIAM HAWLEY
DB 1889 PG 108
MB 2016 PG 67

DANIEL HONEYCUTT
DB 3182 PG 966

STEPHEN YEO
DB 3359 PG 962
MB 2000 PG 466

SHIRLEY HAWLEY
DB 3184 PG 180

THOMAS NORMAN
DB 2175 PG 234

LETESHA WYNN
DB 2136 PG 830
MB 2000 PG 466

BOBBY MABRY
DB 3404 PG 350
MB 2016 PG 25

END CONSTRUCTION
-Y5A- POT Sta. 13+80.00

BEGIN CONSTRUCTION
-Y5- POT Sta. 19+76.00