

CLEARING AND GRUBBING
EROSION CONTROL FOR
CONSTRUCTION SHEET 9

INSTALL PIPE(S) IN JURISDICTIONAL AREAS WITHOUT IMPACTING STREAM UNTIL
AREA STABILIZED AND ACCORDING TO NCDOT BEST MANAGEMENT
PRACTICES FOR CONSTRUCTION AND MAINTENANCE ACTIVITIES MANUAL.

 ENVIRONMENTALLY SENSITIVE AREA
SEE PROJECT SPECIAL PROVISIONS

| | | | |
|----------------------------------|--|---------------------------|--|
| PROJECT REFERENCE NO. R-5705A | | SHEET NO. EC-9/CONST.9 | |
| RW SHEET NO. 9 | | | |
| ROADWAY DESIGN ENGINEER | | HYDRAULICS ENGINEER | |

Kimley » Horn
P.O. BOX 33068 • RALEIGH, N.C. 27636-3068

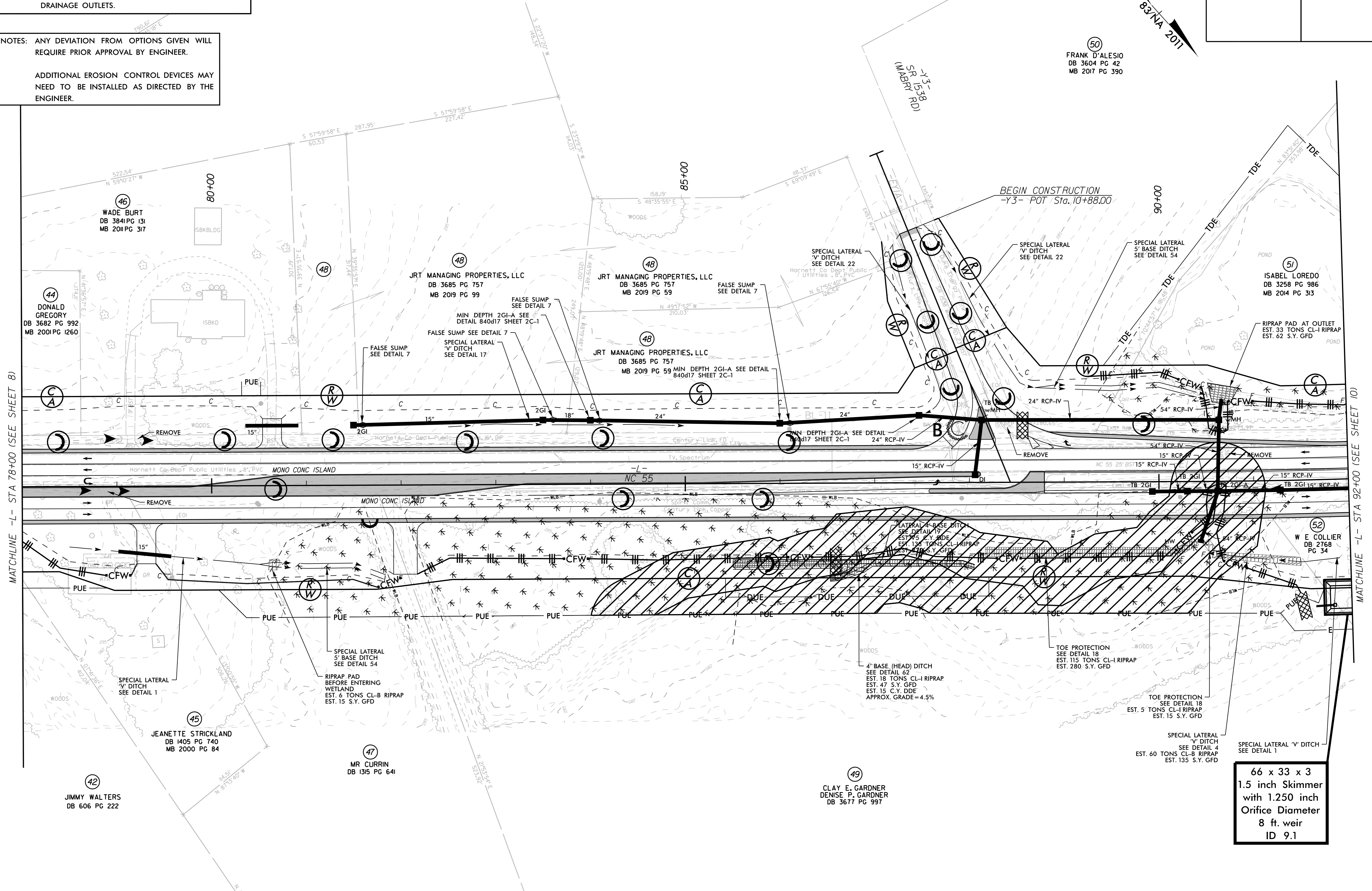
50
FRANK D'ALESSIO
DB 3604 PG 42
MB 2017 PG 390

NAD 83/NA 2011

NOTE:
PLACE TEMPORARY ROCK SEDIMENT DAMS TYPE - B
AND TEMPORARY ROCK SILT CHECKS TYPE - A AT
DRAINAGE OUTLETS.

NOTES: ANY DEVIATION FROM OPTIONS GIVEN WILL
REQUIRE PRIOR APPROVAL BY ENGINEER.

ADDITIONAL EROSION CONTROL DEVICES MAY
NEED TO BE INSTALLED AS DIRECTED BY THE
ENGINEER.



REVISIONS

MATCHLINE -L- STA 78+00 (SEE SHEET 8)

MATCHLINE -L- STA 92+00 (SEE SHEET 10)

66 x 33 x 3
1.5 inch Skimmer
with 1.250 inch
Orifice Diameter
8 ft. weir
ID 9.1