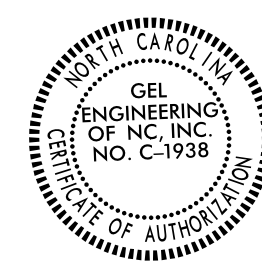


Location and Surveys

GEL SOLUTIONS

an Affiliate of THE GEL GROUP, INC. 2700 SUMMER BLVD. SUITE 106 RALEIGH, NC 27616 (919) 544-1100 WWW.GEL-SOLUTIONS.COM

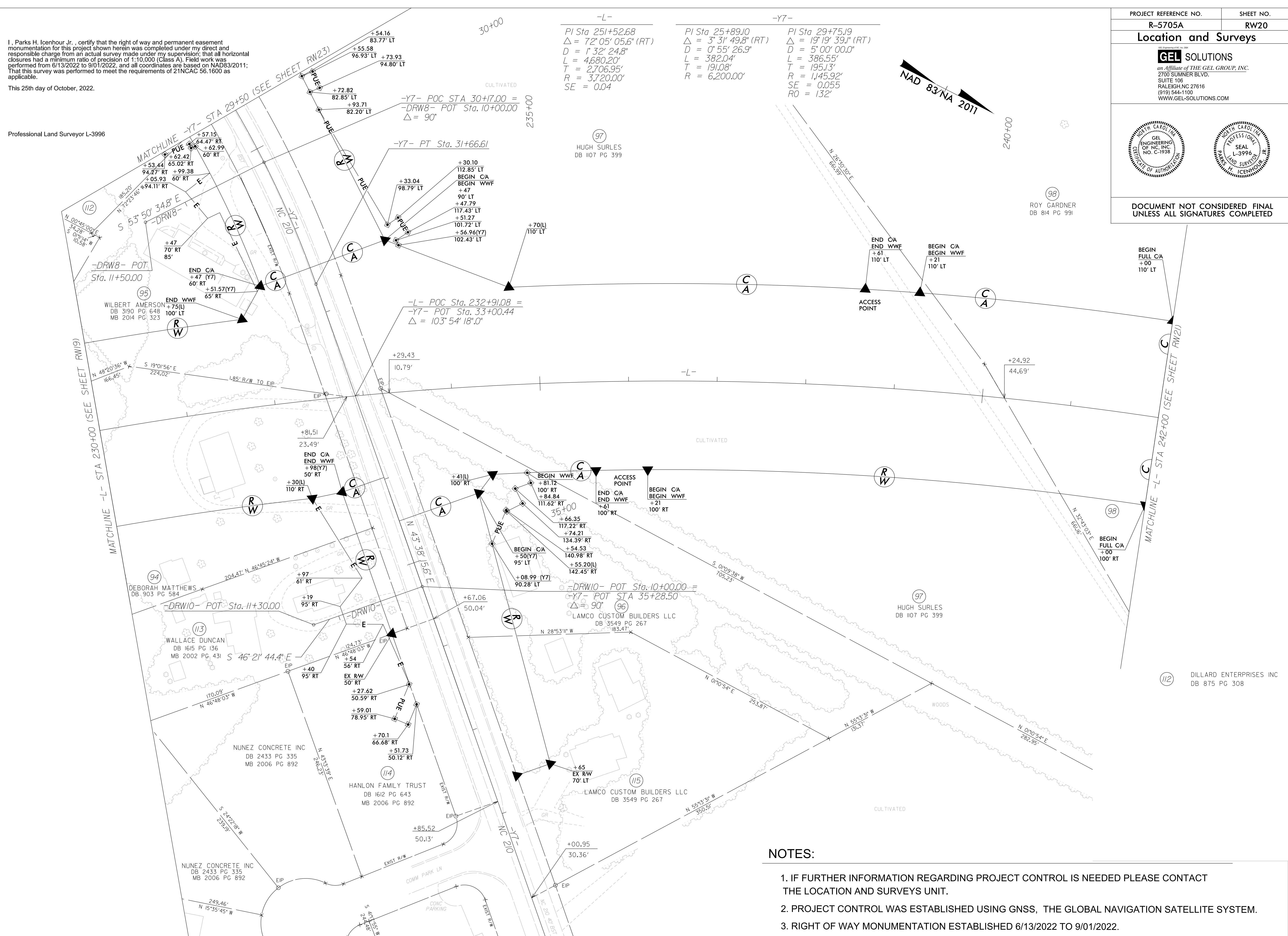


DOCUMENT NOT CONSIDERED FINAL UNLESS ALL SIGNATURES COMPLETED

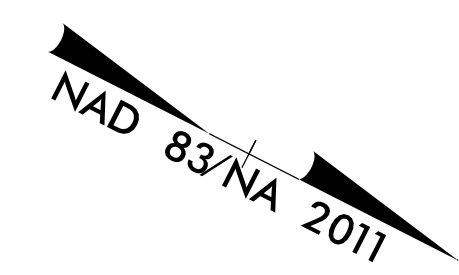
I, Parks H. Icenhour Jr., certify that the right of way and permanent easement monumentation for this project shown herein was completed under my direct and responsible charge from an actual survey made under my supervision that all horizontal closures had a minimum ratio of precision of 1:10,000 (Class A). Field work was performed from 6/13/2022 to 9/01/2022, and all coordinates are based on NAD83/2011. That this survey was performed to meet the requirements of 21NCAC 56.1600 as applicable.

This 25th day of October, 2022.

Professional Land Surveyor L-3996



Curve data for three curves: PI Sta. 251+52.68, PI Sta. 25+89.10, and PI Sta. 29+75.19. Each curve lists Δ, D, L, T, R, SE, and RO values.



REVISIONS

24-0CT-2022 14:01 6/2/2019 2022 R-5705A ROW V-5705.r.w. sheets\F5705A.LS.r.w.20.dgn AT DESKTOP-ERRYSVF Jason P. Cavitt

NOTES:

- 1. IF FURTHER INFORMATION REGARDING PROJECT CONTROL IS NEEDED PLEASE CONTACT THE LOCATION AND SURVEYS UNIT.
2. PROJECT CONTROL WAS ESTABLISHED USING GNSS, THE GLOBAL NAVIGATION SATELLITE SYSTEM.
3. RIGHT OF WAY MONUMENTATION ESTABLISHED 6/13/2022 TO 9/01/2022.