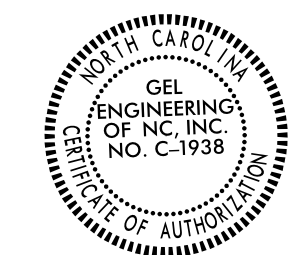


6/2/09

Location and Surveys

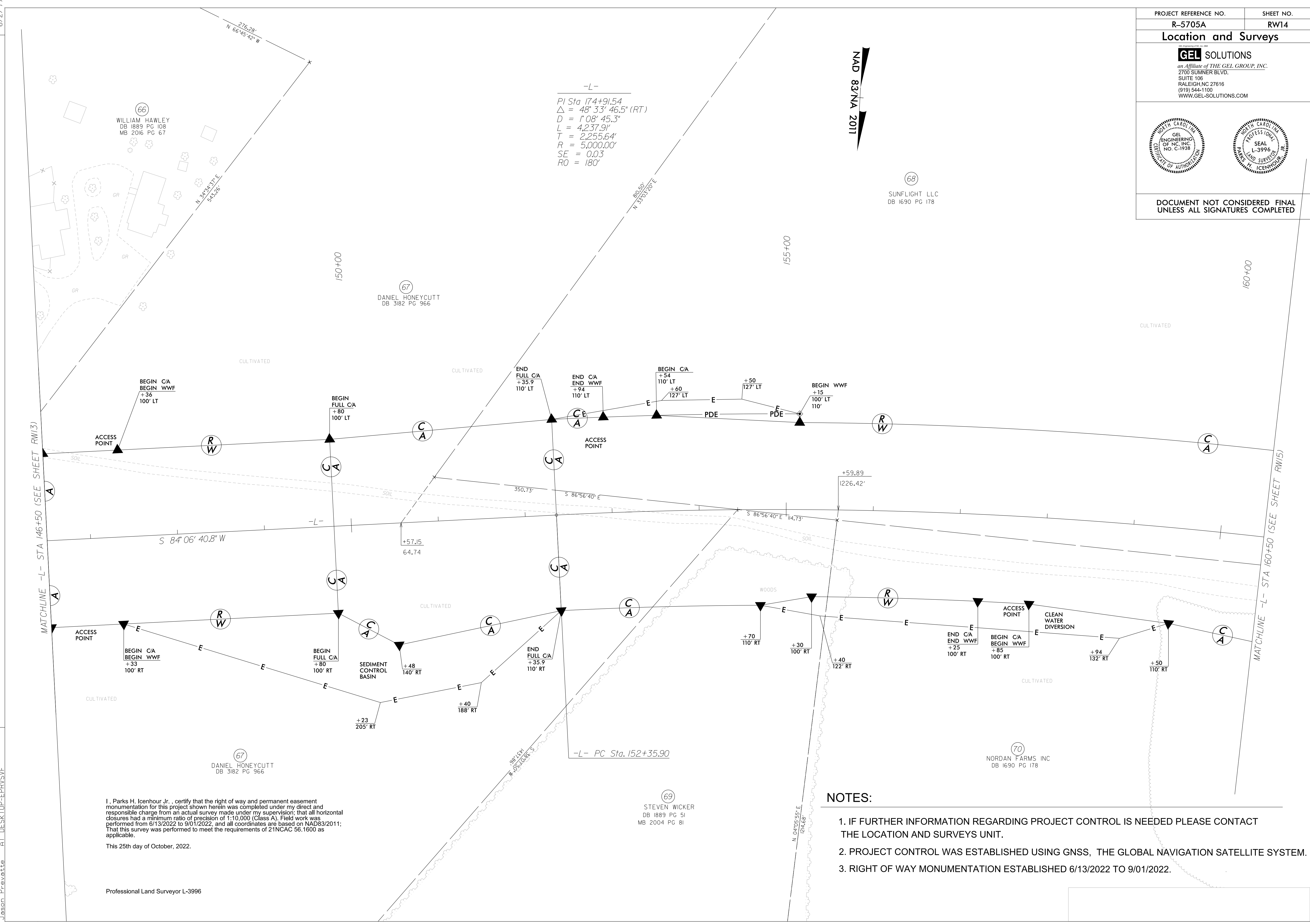
GEL SOLUTIONS
 an Affiliate of THE GEL GROUP, INC.
 2700 SUMNER BLVD.
 SUITE 106
 RALEIGH, NC 27616
 (919) 544-1100
 WWW.GEL-SOLUTIONS.COM



DOCUMENT NOT CONSIDERED FINAL UNLESS ALL SIGNATURES COMPLETED

REVISIONS

C:\GEL\Projects\2022\R-5705A_ROW\5705A.rw.sheets\F5705A_Ls.rw14.dgn
 Jason Prevatt
 24-OCT-2022 13:54
 AT DESKTOP-EPRI\SVP



-L-
 PI Sta 174+91.54
 $\Delta = 48^\circ 33' 46.5''$ (RT)
 $D = 1^\circ 08' 45.3''$
 $L = 4,237.91'$
 $T = 2,255.64'$
 $R = 5,000.00'$
 $SE = 0.03$
 $RO = 180^\circ$

NAD 83/NA 2011

I, Parks H. Icenhour Jr., certify that the right of way and permanent easement monumentation for this project shown herein was completed under my direct and responsible charge from an actual survey made under my supervision; that all horizontal closures had a minimum ratio of precision of 1:10,000 (Class A). Field work was performed from 6/13/2022 to 9/01/2022, and all coordinates are based on NAD83/2011; That this survey was performed to meet the requirements of 21NCAC 56.1600 as applicable.

This 25th day of October, 2022.

Professional Land Surveyor L-3996

NOTES:

1. IF FURTHER INFORMATION REGARDING PROJECT CONTROL IS NEEDED PLEASE CONTACT THE LOCATION AND SURVEYS UNIT.
2. PROJECT CONTROL WAS ESTABLISHED USING GNSS, THE GLOBAL NAVIGATION SATELLITE SYSTEM.
3. RIGHT OF WAY MONUMENTATION ESTABLISHED 6/13/2022 TO 9/01/2022.