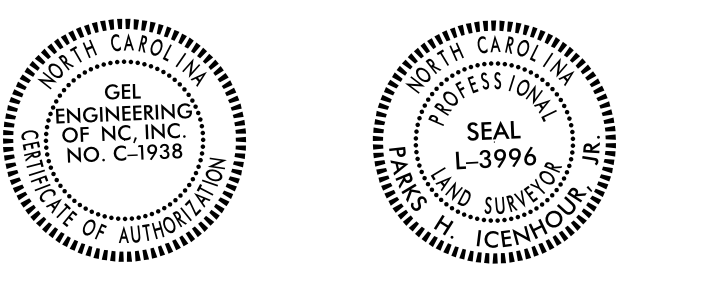


Location and Surveys

GEL SOLUTIONS
an Affiliate of THE GEL GROUP, INC.
2700 SUMNER BLVD.
SUITE 106
RALEIGH, NC 27616
(919) 544-1100
WWW.GEL-SOLUTIONS.COM



DOCUMENT NOT CONSIDERED FINAL UNLESS ALL SIGNATURES COMPLETED

I, Parks H. Icenhour Jr., certify that the right of way and permanent easement monumentation for this project shown herein was completed under my direct and responsible charge from an actual survey made under my supervision; that all horizontal closures had a minimum ratio of precision of 1:10,000 (Class A). Field work was performed from 6/13/2022 to 9/01/2022, and all coordinates are based on NAD83/2011; That this survey was performed to meet the requirements of 21NCAC 56.1600 as applicable.
This 25th day of October, 2022.

Professional Land Surveyor L-3996

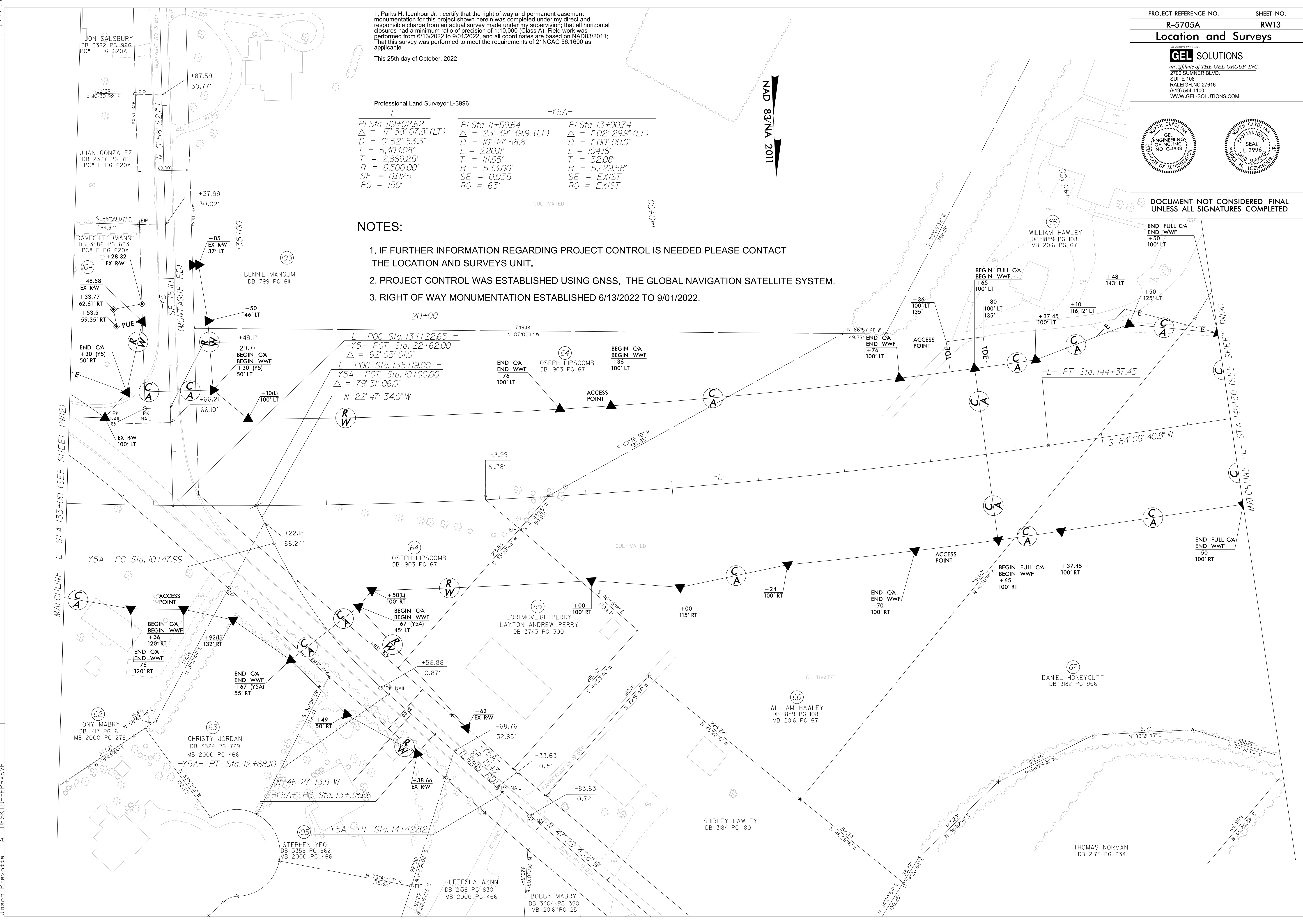
Table with 3 columns: -L-, -Y5A-, and -Y5A-. Each column contains curve data including PI Sta, Delta, D, L, T, R, SE, and RO.

NOTES:

- 1. IF FURTHER INFORMATION REGARDING PROJECT CONTROL IS NEEDED PLEASE CONTACT THE LOCATION AND SURVEYS UNIT.
2. PROJECT CONTROL WAS ESTABLISHED USING GNSS, THE GLOBAL NAVIGATION SATELLITE SYSTEM.
3. RIGHT OF WAY MONUMENTATION ESTABLISHED 6/13/2022 TO 9/01/2022.

REVISIONS

24-OCT-2022 13:53 C:\GEL\Projects\2022\R-5705A_ROW\5705A_Ls.rwl3.dgn
Jason Prevattle



MATCHLINE -L- STA 133+00 (SEE SHEET RW12)

MATCHLINE -L- STA 146+50 (SEE SHEET RW14)

NAD 83/NA 2011