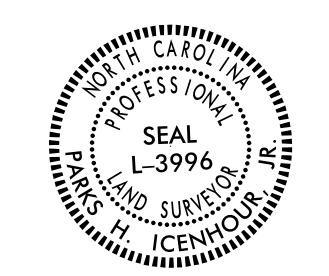
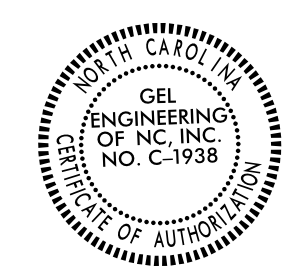


Location and Surveys

GEL SOLUTIONS an Affiliate of THE GEL GROUP, INC. 2700 SUMNER BLVD. SUITE 106 RALEIGH, NC 27616 (919) 544-1100 WWW.GEL-SOLUTIONS.COM

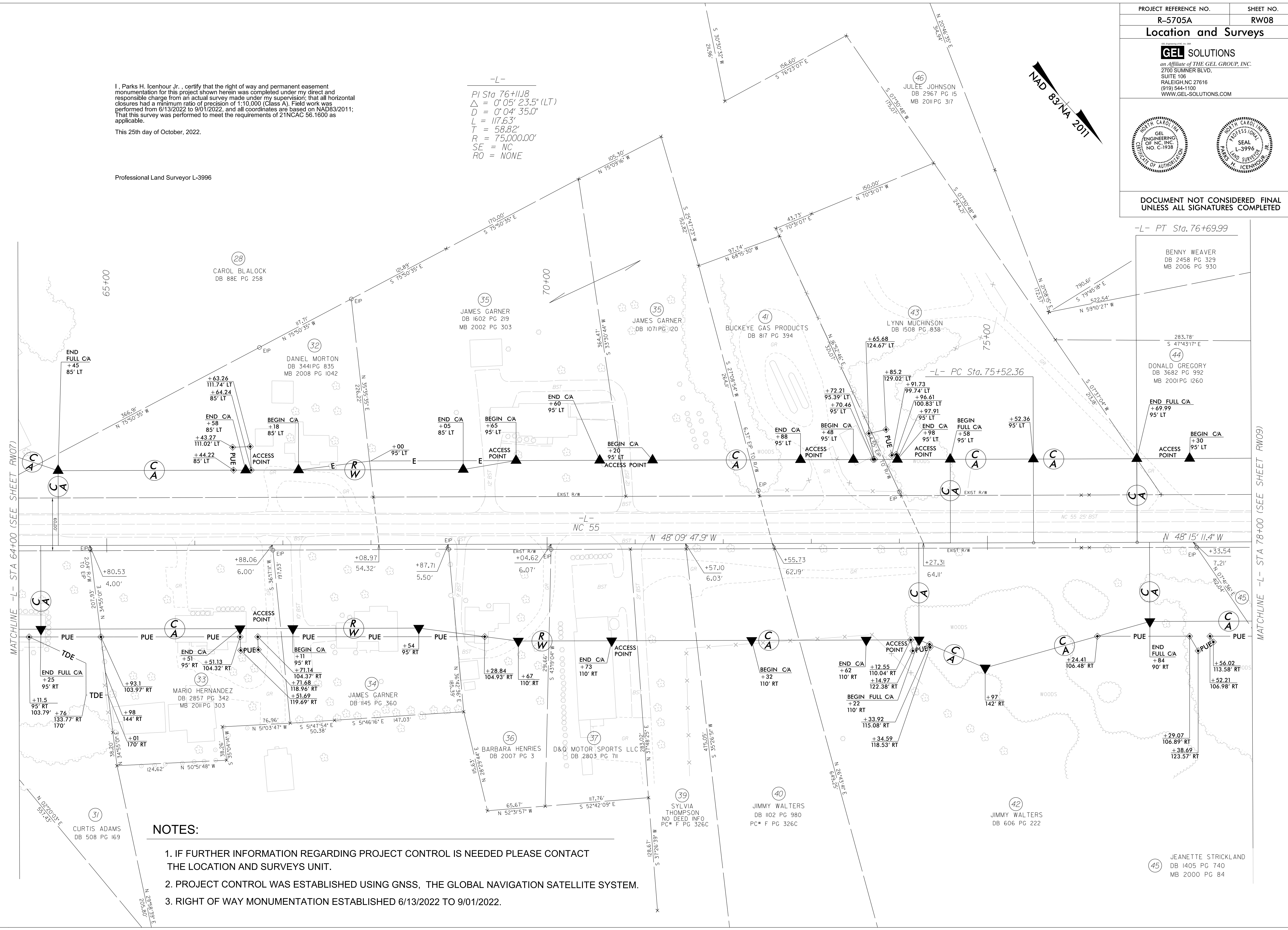
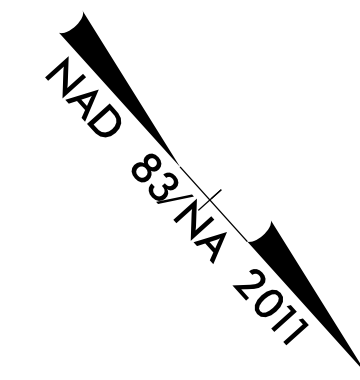


DOCUMENT NOT CONSIDERED FINAL UNLESS ALL SIGNATURES COMPLETED

I, Parks H. Icenhour Jr., certify that the right of way and permanent easement monumentation for this project shown herein was completed under my direct and responsible charge from an actual survey made under my supervision; that all horizontal closures had a minimum ratio of precision of 1:10,000 (Class A). Field work was performed from 6/13/2022 to 9/01/2022, and all coordinates are based on NAD83/2011; That this survey was performed to meet the requirements of 21NCAC 56.1600 as applicable. This 25th day of October, 2022.

Professional Land Surveyor L-3996

-L- PI Sta 76+11.8 Δ = 0° 05' 23.5" (LT) D = 0° 04' 35.0" L = 117.63' T = 58.82' R = 75,000.00' SE = NC RO = NONE



NOTES:

1. IF FURTHER INFORMATION REGARDING PROJECT CONTROL IS NEEDED PLEASE CONTACT THE LOCATION AND SURVEYS UNIT.
2. PROJECT CONTROL WAS ESTABLISHED USING GNSS, THE GLOBAL NAVIGATION SATELLITE SYSTEM.
3. RIGHT OF WAY MONUMENTATION ESTABLISHED 6/13/2022 TO 9/01/2022.

REVISIONS

24-OCT-2022 13:43 6/2/09 2022 R-5705A ROW V-5705.r.w. sheets.R5705A.Ls.r.w08.dgn AT DESKTOP-ERRYSVF

MATCHLINE -L- STA 64+00 (SEE SHEET RW07)

MATCHLINE -L- STA 78+00 (SEE SHEET RW09)