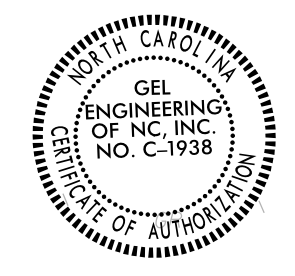


Location and Surveys

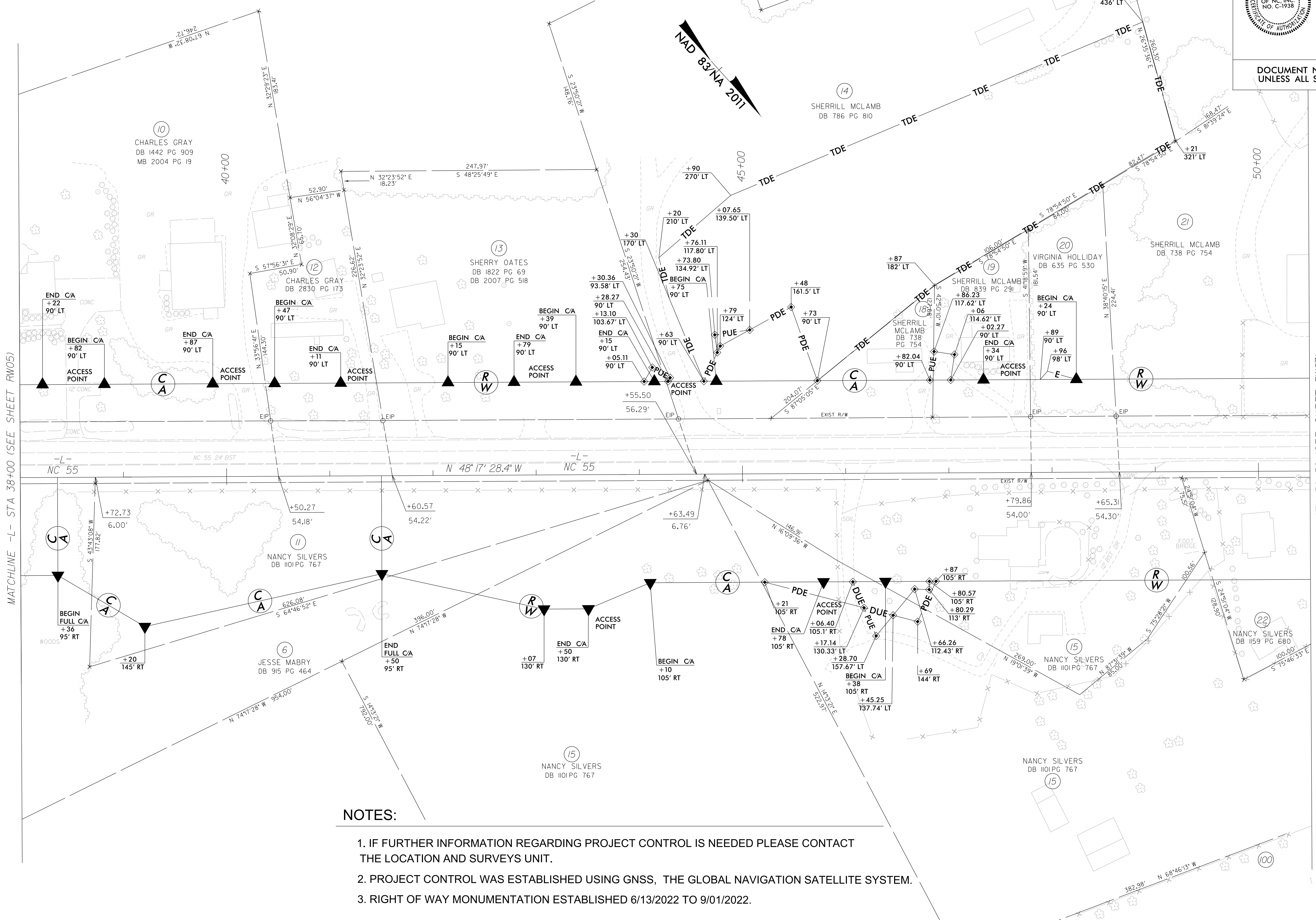
GEL SOLUTIONS
an Affiliate of THE GEL GROUP, INC.
2700 SUMMER BLVD.
SUITE 106
RALEIGH, NC 27616
(919) 544-1100
WWW.GEL-SOLUTIONS.COM



DOCUMENT NOT CONSIDERED FINAL
UNLESS ALL SIGNATURES COMPLETED

I, Parks H. Icenhour Jr., certify that the right of way and permanent easement
monumentation for this project shown herein was completed under my direct and
responsible charge from an actual survey made under my supervision; that all horizontal
closures had a minimum ratio of precision of 1:10,000 (Class A). Field work was
performed from 6/13/2022 to 9/01/2022, and all coordinates are based on NAD83/2011;
That this survey was performed to meet the requirements of 21NCAC 56.1600 as
applicable.
This 25th day of October, 2022.

Professional Land Surveyor L-3996



- NOTES:
1. IF FURTHER INFORMATION REGARDING PROJECT CONTROL IS NEEDED PLEASE CONTACT THE LOCATION AND SURVEYS UNIT.
2. PROJECT CONTROL WAS ESTABLISHED USING GNSS, THE GLOBAL NAVIGATION SATELLITE SYSTEM.
3. RIGHT OF WAY MONUMENTATION ESTABLISHED 6/13/2022 TO 9/01/2022.

REVISIONS

65-OCT-2022-08:51
C:\GEL\Projects\2022\R-5705A-RW\Drawings\5705A\_1s\_rw6.dgn
Jason Priddy

MATCHLINE -L- STA 38+00 (SEE SHEET RW05)

MATCHLINE -L- STA 50+50 (SEE SHEET RW07)