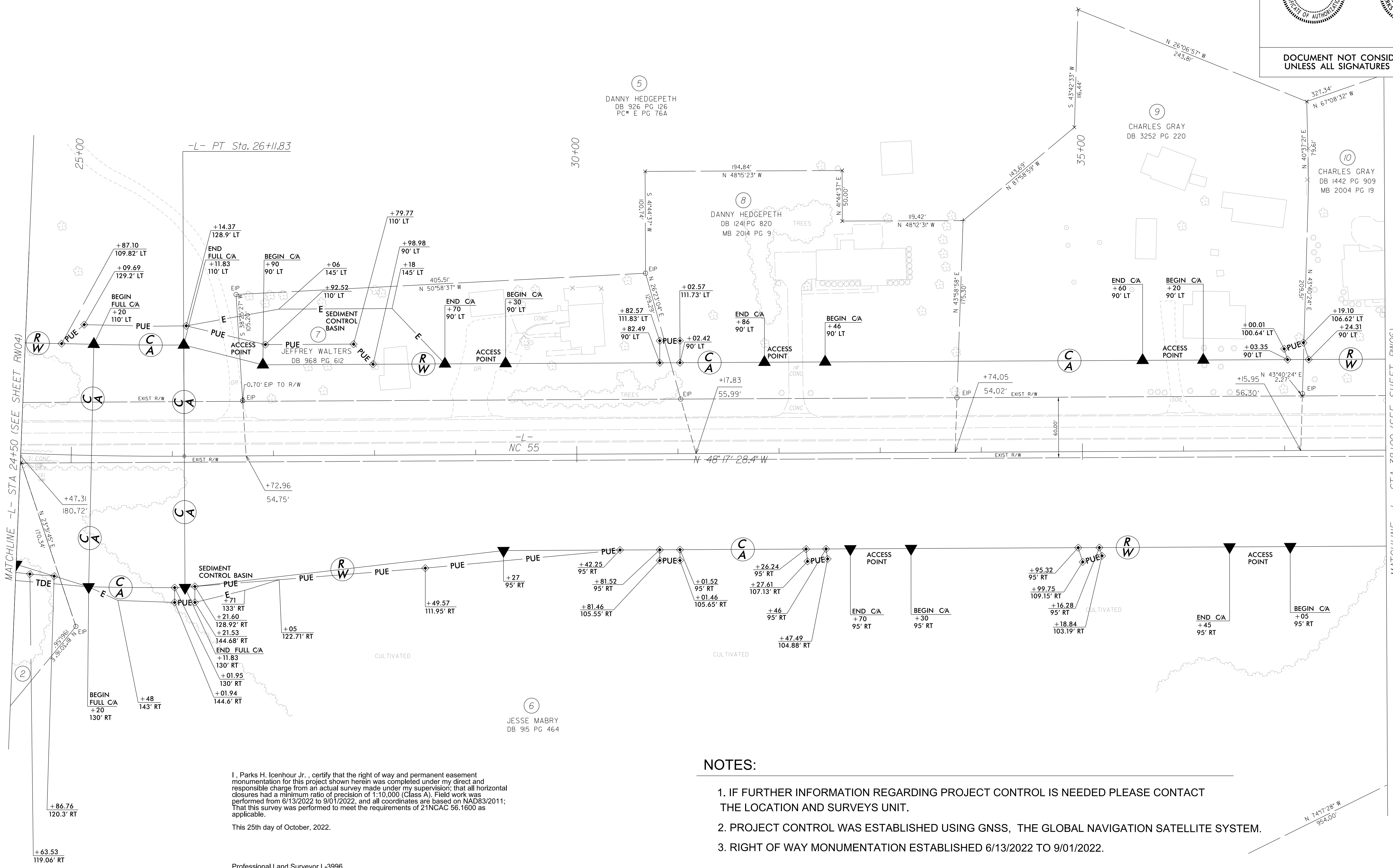
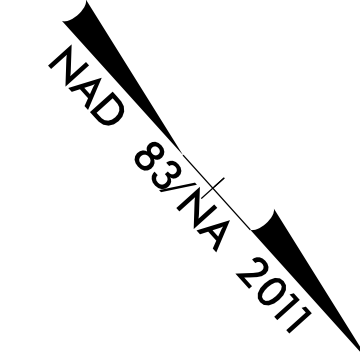


-L-

PI Sta 21+82.71
 $\Delta = 14' 07" 17.3" (LT)$
 $D = 1' 38" 13.3"$
 $L = 862.63'$
 $T = 433.51'$
 $R = 3,500.00'$
 $SE = 0.03$
 $RO = 150'$



REVISIONS

24-OCT-2022 13:37 C:\GEL\Projects\2022\R-5705A-RW\Drawings\5705A-RW.dgn
 Jason Prevatt

I, Parks H. Icenhour Jr., certify that the right of way and permanent easement
 monumentation for this project shown herein was completed under my direct and
 responsible charge from an actual survey made under my supervision; that all horizontal
 closures had a minimum ratio of precision of 1:10,000 (Class A). Field work was
 performed from 6/13/2022 to 9/01/2022, and all coordinates are based on NAD83/2011;
 That this survey was performed to meet the requirements of 21NCAC 56.1600 as
 applicable.
 This 25th day of October, 2022.

Professional Land Surveyor L-3996

NOTES:

- IF FURTHER INFORMATION REGARDING PROJECT CONTROL IS NEEDED PLEASE CONTACT THE LOCATION AND SURVEYS UNIT.
- PROJECT CONTROL WAS ESTABLISHED USING GNSS, THE GLOBAL NAVIGATION SATELLITE SYSTEM.
- RIGHT OF WAY MONUMENTATION ESTABLISHED 6/13/2022 TO 9/01/2022.

N 74°17'28" W
954.00'