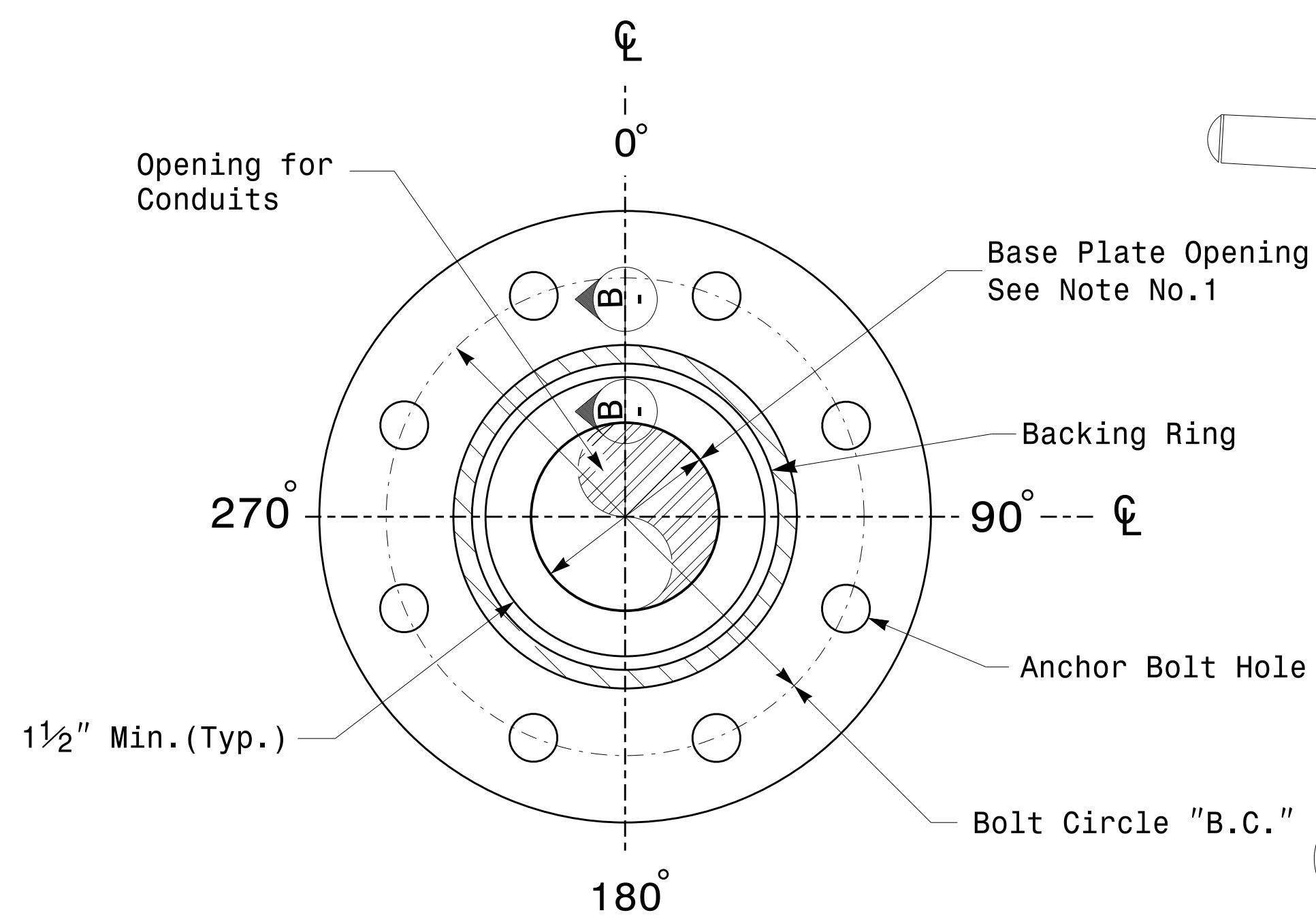
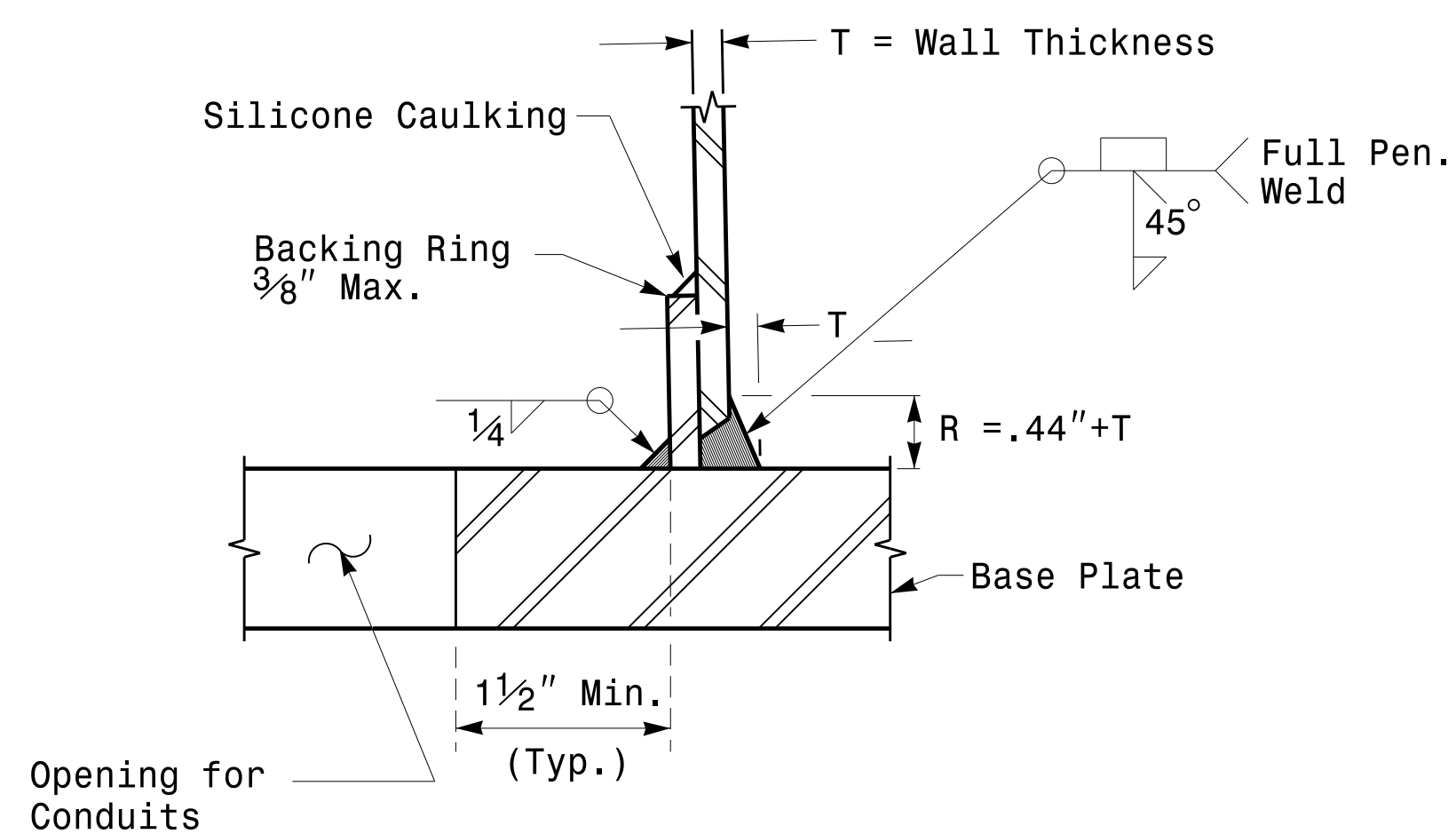


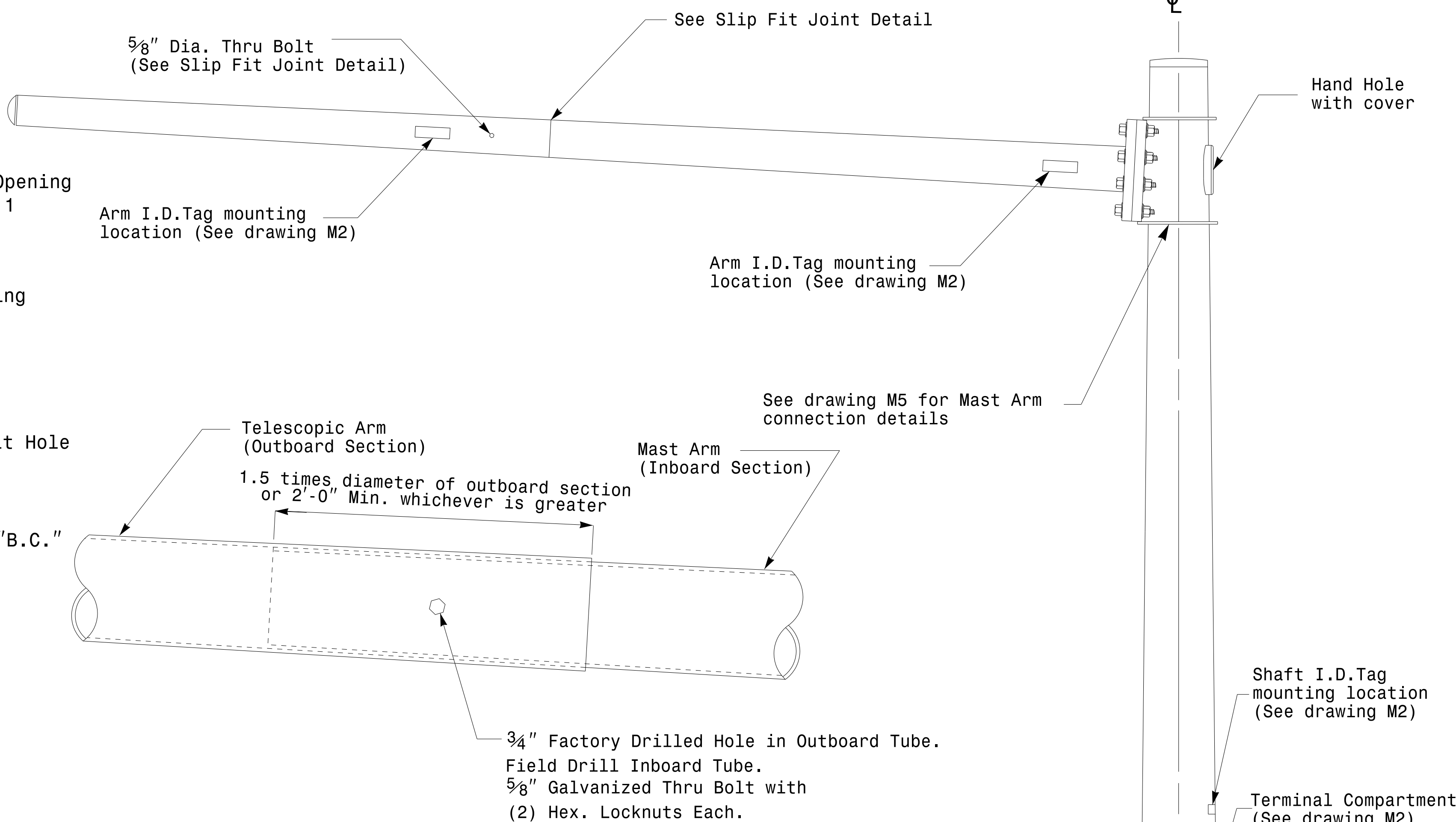
Note:  
 1. Opening in pole base plate shall be equal to pole base inside diameter minus  $3\frac{1}{2}$ " but shall not be less than  $8\frac{1}{2}$ ".



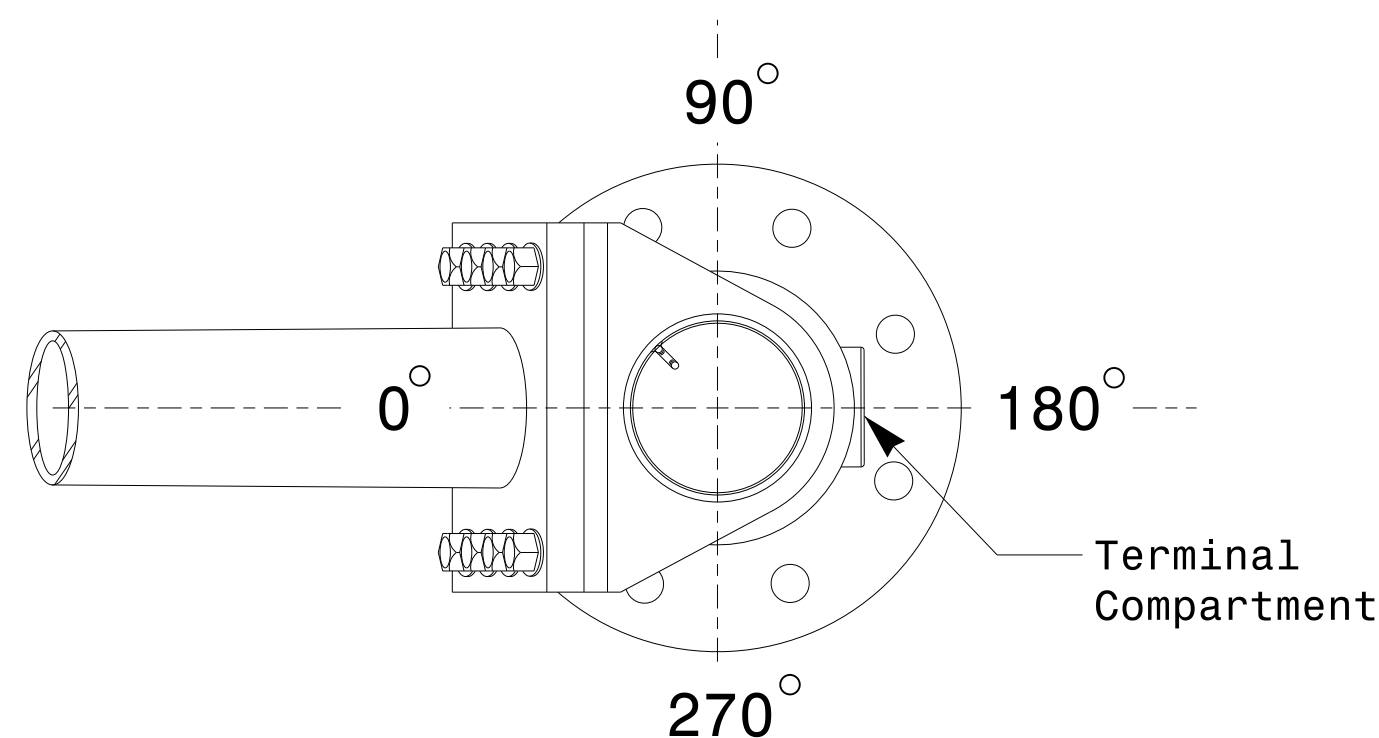
Section A-A  
 Pole Base Plate Details



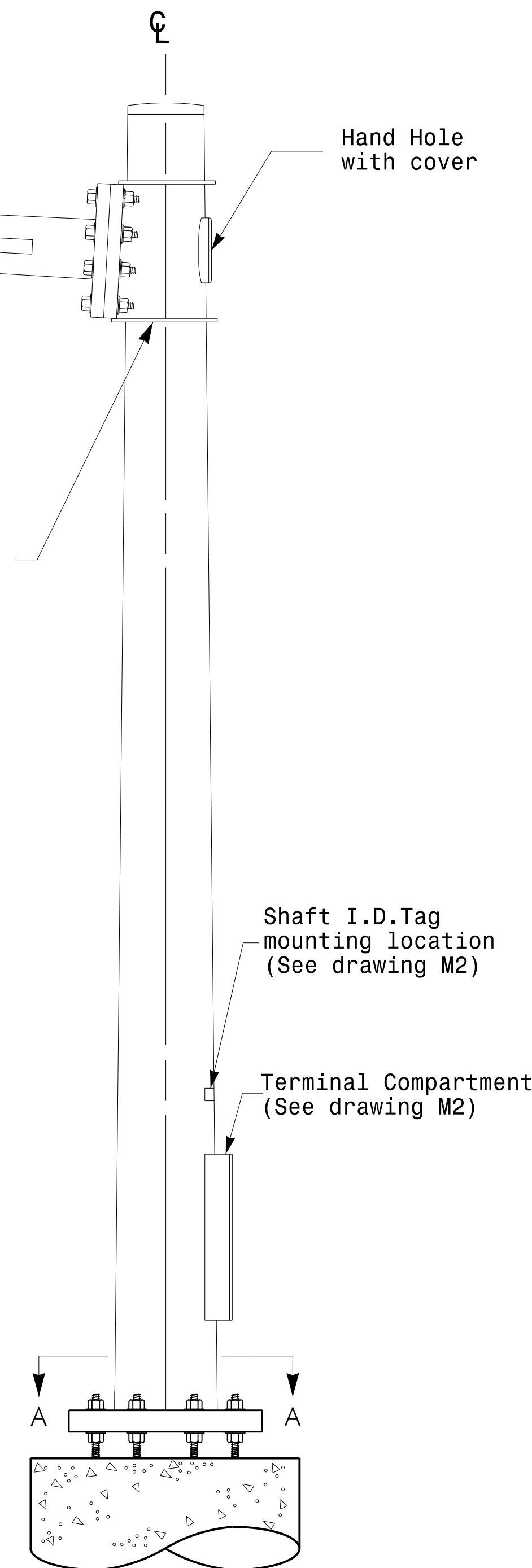
Section B-B  
 (Pole Attachment to Base Plate)  
 Full-Penetration Groove Weld Detail



Slip Fit Joint Detail for Mast Arm



Mast Arm Radial Orientation



Mast Arm Pole

Fabrication Details - Mast Arm Poles

	<b>Typical Fabrication Details For Mast Arm Poles</b>		
	PLAN DATE: OCTOBER 2017 DESIGNED BY: K.C. DURIGON	PREPARED BY: N. BITTING REVIEWED BY: D.C. SARKAR	
SCALE: 0 NA NONE	REVISIONS:	INIT.:	DATE:
DocuSigned by: <i>Dinesh C. Sarkar</i>			10/11/2017 DATE

11-OCT-2017 08:33  
 U:\S&B\W\T\S\Signal\sig\Design Section\Eastern Region\W\T\S\Signal\sig\Design Section\Signal Design Section\Typical Fabrication Details - Mast Arm Poles.dgn  
 P:\21088