

PHASING DIAGRAM

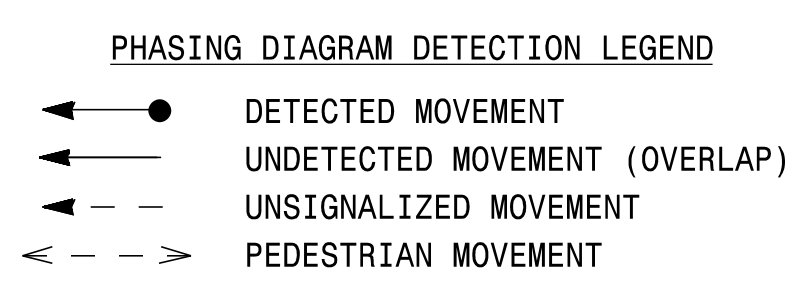
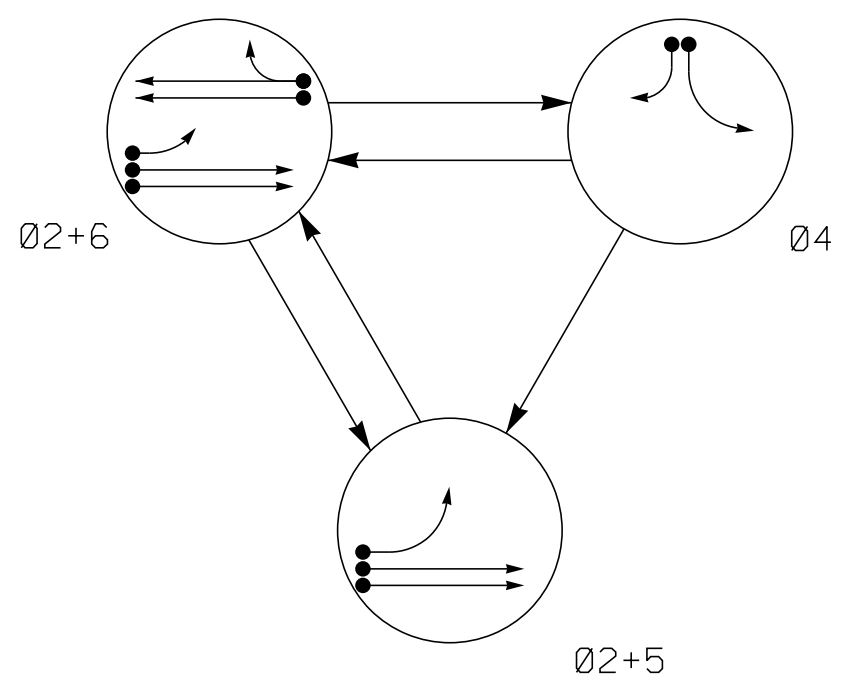
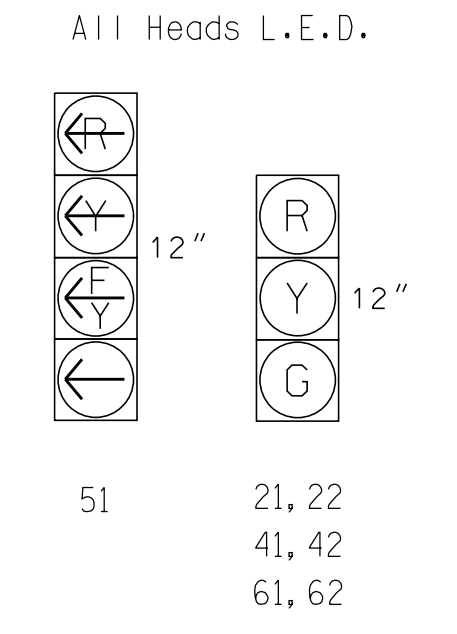


TABLE OF OPERATION

SIGNAL FACE	PHASE			
	02+5	02+6	04	FLASH
21, 22	G	G	R	Y
41, 42	R	R	G	R
51	—	—	—	—
61, 62	R	G	R	Y

SIGNAL FACE I.D.



MAXTIME DETECTOR INSTALLATION CHART

LOOP	SIZE (FT)	DISTANCE FROM STOPBAR (FT)	TURNS	NEW LOOP	PROGRAMMING					NEW CARD
					CALL PHASE	DELAY TIME	EXTEND TIME	EXTEND ADDED INITIAL	CALL DELAY DURING GREEN	
2A	6X6	250	*	*	2	-	-	X	-	*
2B	6X6	250	*	*	2	-	-	X	-	*
2C	6X40	0	*	*	2	5.0	2.0	X	X	*
2D	6X40	0	*	*	2	5.0	2.0	X	X	*
4A	6X40	0	*	*	4	3.0	-	X	-	*
4B	6X40	0	*	*	4	15.0	-	X	-	*
5A	6X40	0	*	*	5	15.0	-	X	-	*
6A	6X6	250	*	*	6	-	-	X	-	*
6B	6X6	250	*	*	6	-	-	X	-	*
6C	6X40	0	*	*	6	5.0	2.0	X	X	*
6D	6X40	0	*	*	6	5.0	2.0	X	X	*

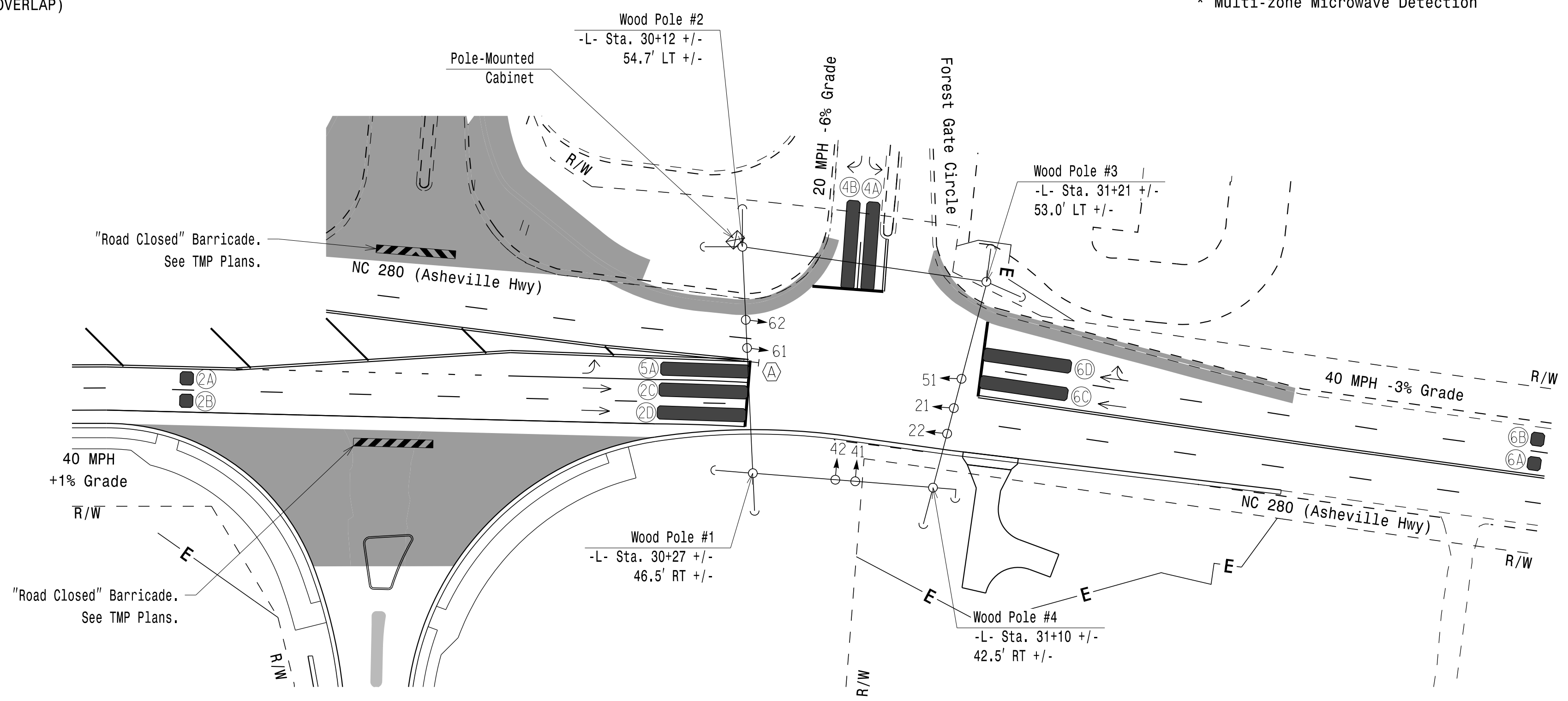
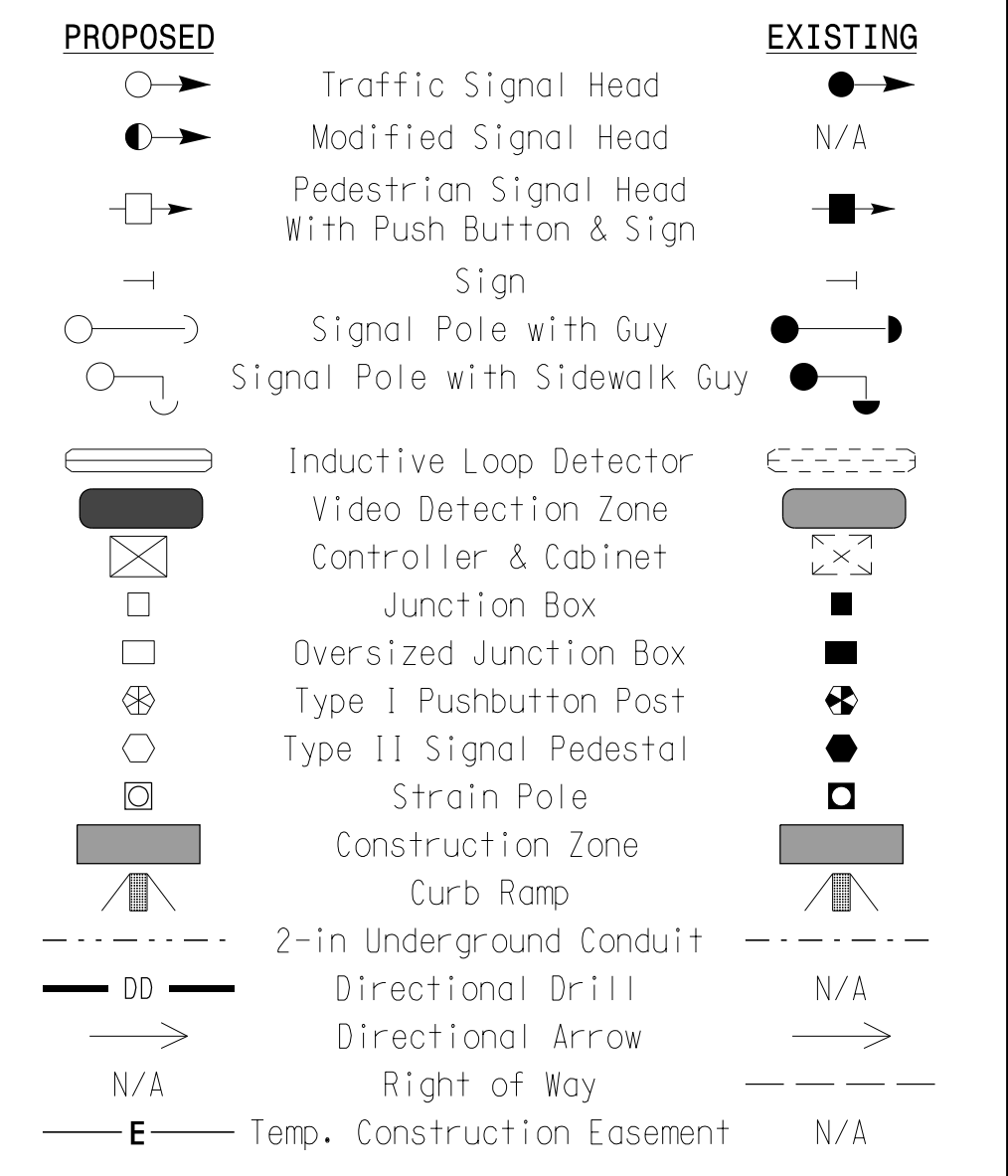
* Multi-zone Microwave Detection

3 Phase Fully Actuated (Time Based Coordination)

NOTES

- Refer to "Roadway Standard Drawings NCDOT" dated January 2018 and "Standard Specifications for Roads and Structures" dated January 2018.
- Do not program signal for late night flashing operation unless otherwise directed by the Engineer.
- Phase 5 may be lagged.
- Set all detector units to presence mode.
- Program controller to operate using FYA compact mode.
- Locate new cabinet so as not to obstruct sight distance of vehicles turning right on red.
- See R-5799 TMP Phase V for pavement markings.
- This intersection uses multi-zone microwave detection. Install detectors according to the manufacturer's instructions to achieve the desired detection.
- Maximum times shown in timing chart are for free-run operation only. Coordinated signal system timing values supersede these values.
- Furnish and install GPS Unit.

LEGEND



MAXTIME TIMING CHART

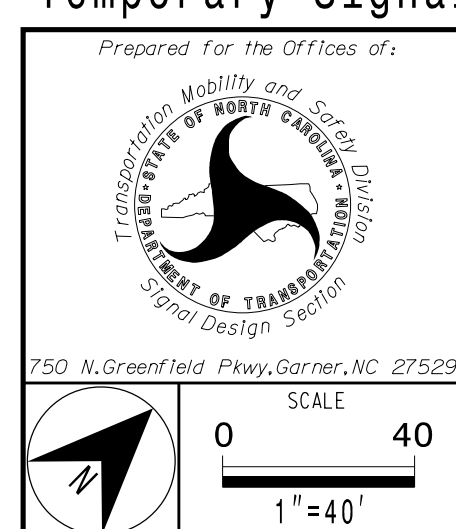
FEATURE	PHASE			
	2	4	5	6
Walk *	-	-	-	-
Ped Clear *	-	-	-	-
Min Green	12	7	7	12
Passage *	6.0	2.0	2.0	6.0
Max I *	90	25	15	90
Yellow Change	4.4	3.1	3.0	4.4
Red Clear	1.3	2.6	2.4	1.3
Added Initial *	-	-	-	-
Maximum Initial *	-	-	-	-
Time Before Reduction *	15	-	-	15
Time To Reduce *	30	-	-	30
Minimum Gap	3.0	-	-	3.0
Advance Walk	-	-	-	-
Non Lock Detector	-	X	X	-
Vehicle Recall	MIN. RECALL	-	-	MIN. RECALL
Dual Entry	-	-	-	-

* These values may be field adjusted. Do not adjust Min Green and Extension times for phases 2 and 6 lower than what is shown. Min Green for all other phases should not be lower than 4 seconds.

SIGNS



Temporary Signal 1 - TCP Phase V
NC 280 (Asheville Highway) at Forest Gate Circle



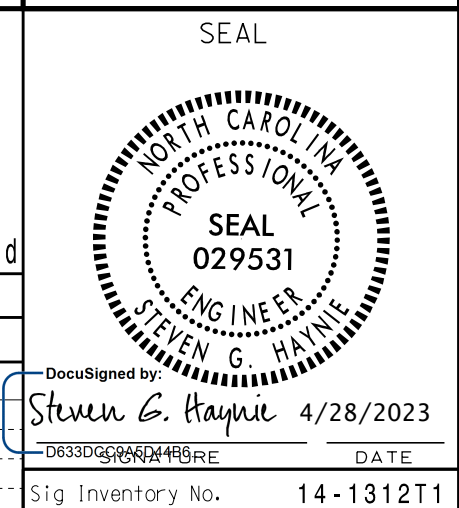
Division 14 Transylvania County Brevard

PLAN DATE: April 2023 REVIEWED BY: S.G. Haynie

PREPARED BY: P. Koloski REVIEWED BY:

REVISIONS	INIT.	DATE

DOCUMENT NOT CONSIDERED FINAL UNLESS ALL SIGNATURES COMPLETED



4/28/2023 11:41:47 AM \\rsandh\csm\staff\p\koloski\p\koloski\signal\signal\plan\sheet\m5799_s14_014131211.dgn