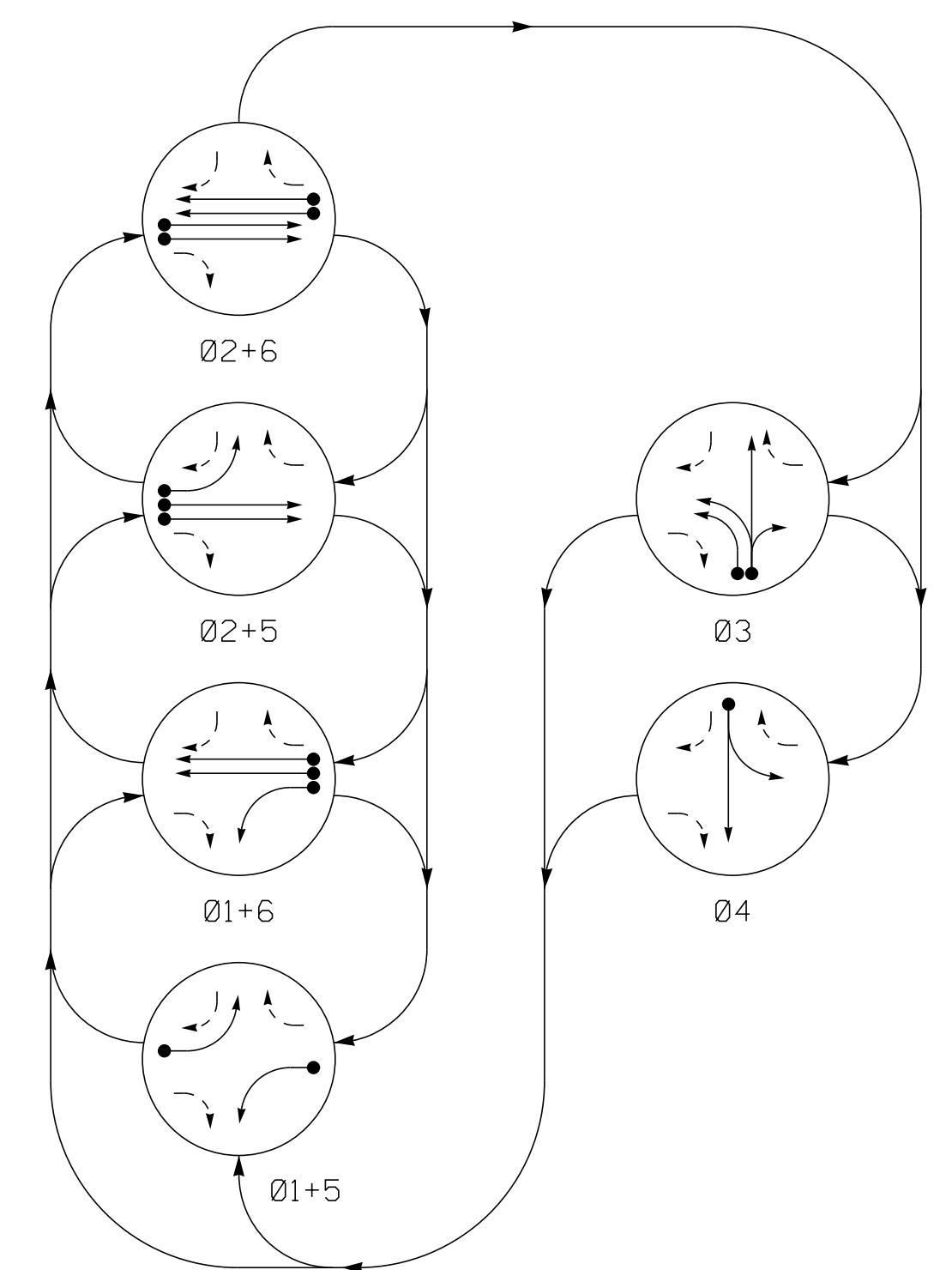


PHASING DIAGRAM



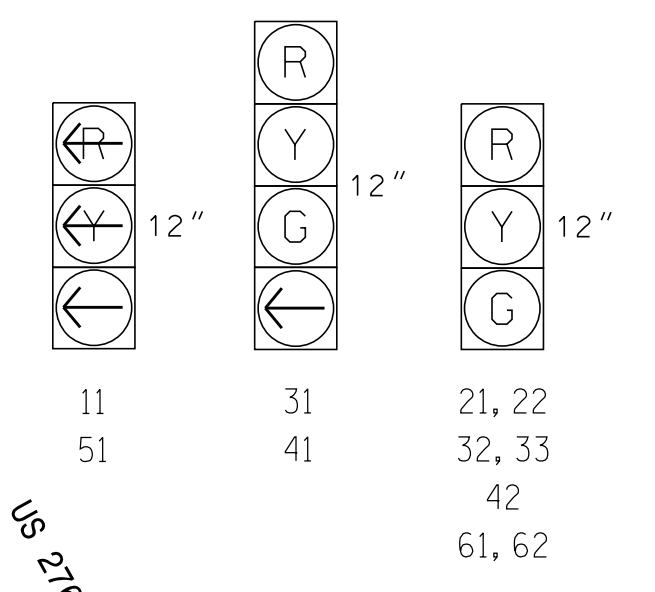
PHASING DIAGRAM DETECTION LEGEND

- DETECTED MOVEMENT
UNDETECTED MOVEMENT (OVERLAP)
UNSIGNALIZED MOVEMENT
PEDESTRIAN MOVEMENT

TABLE OF OPERATION table with columns for SIGNAL FACE, PHASE, and signal colors (R, Y, G, F, FLASH).

SIGNAL FACE I.D.

All Heads L.E.D.



MAXTIME DETECTOR INSTALLATION CHART table with columns for LOOP, SIZE (FT), DISTANCE FROM STOPBAR (FT), TURNS, NEW LOOP, CALL PHASE, DELAY TIME, EXTEND TIME, EXTEND INITIAL, CALL, DELAY DURING GREEN, NEW CARD.

6 Phase Fully Actuated (Time Based Coordination)

NOTES

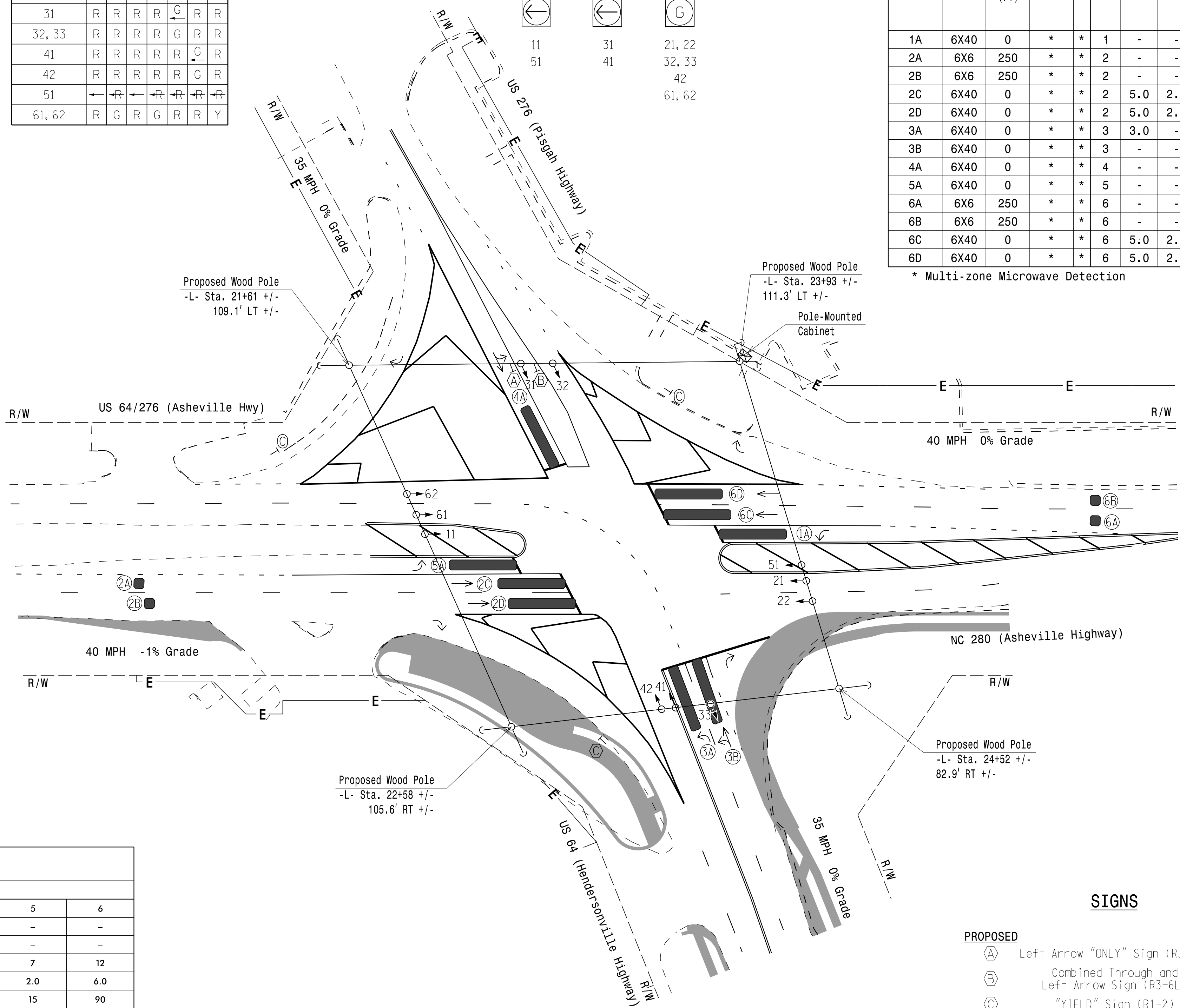
- 1. Refer to "Roadway Standard Drawings NCDOT" dated January 2018...
2. Do not program signal for late night flashing operation...
3. Phase 1 and Phase 5 may be lagged.
4. The order of Phase 3 and Phase 4 may be reversed.
5. Locate new cabinet so as not to obstruct sight distance...
6. Set all detector units to presence mode.
7. See R-5799 TMP Phase IV for pavement markings.
8. This intersection uses multi-zone microwave detection.
9. Maximum times shown in timing chart are for free-run operation only.
10. Furnish and install GPS Unit.

LEGEND

- PROPOSED: Traffic Signal Head, Modified Signal Head, Pedestrian Signal Head, Signal Pole with Guy, Inductive Loop Detector, Video Detection Zone, Controller & Cabinet, Junction Box, Oversized Junction Box, Type I Pushbutton Post, Type II Signal Pedestal, Strain Pole, Construction Zone, Curb Ramp, 2-in Underground Conduit, Directional Drill, Directional Arrow, Right of Way, Temp. Construction Easement.
EXISTING: N/A, N/A, N/A, N/A, N/A, N/A, N/A, N/A, N/A, N/A, N/A, N/A, N/A, N/A, N/A, N/A, N/A, N/A, N/A, N/A.

SIGNS

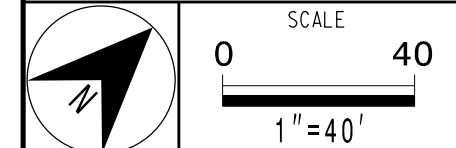
- PROPOSED: (A) Left Arrow "ONLY" Sign (R3-5L), (B) Combined Through and Left Arrow Sign (R3-6L), (C) "YIELD" Sign (R1-2).
EXISTING: (A), (B), (C).



MAXTIME TIMING CHART table with columns for FEATURE and PHASE (1-6) and rows for Walk, Ped Clear, Min Green, Passage, Max I, Yellow Change, Red Clear, Added Initial, Maximum Initial, Time Before Reduction, Time To Reduce, Minimum Gap, Advance Walk, Non Lock Detector, Vehicle Recall, Dual Entry.

* These values may be field adjusted. Do not adjust Min Green and Extension times for phases 2 and 6 lower than what is shown. Min Green for all other phases should not be lower than 4 seconds.

Temporary Signal 1 - TCP Phase IV. Includes project title, location, division, plan date, reviewed by, prepared by, and professional seal for Steven G. Haynie, Engineer, No. 029531.



4/28/2023 5:33:12 PM \\rsandh.com\mf:\es\tr\ospor\01\on\p4\030049021_R-5799_US_64-276_Intersection_Design\04\Signal\Traffic\TrafficPlan_Sheets\05\999_sig_psn_9-0-1406911.dgn