

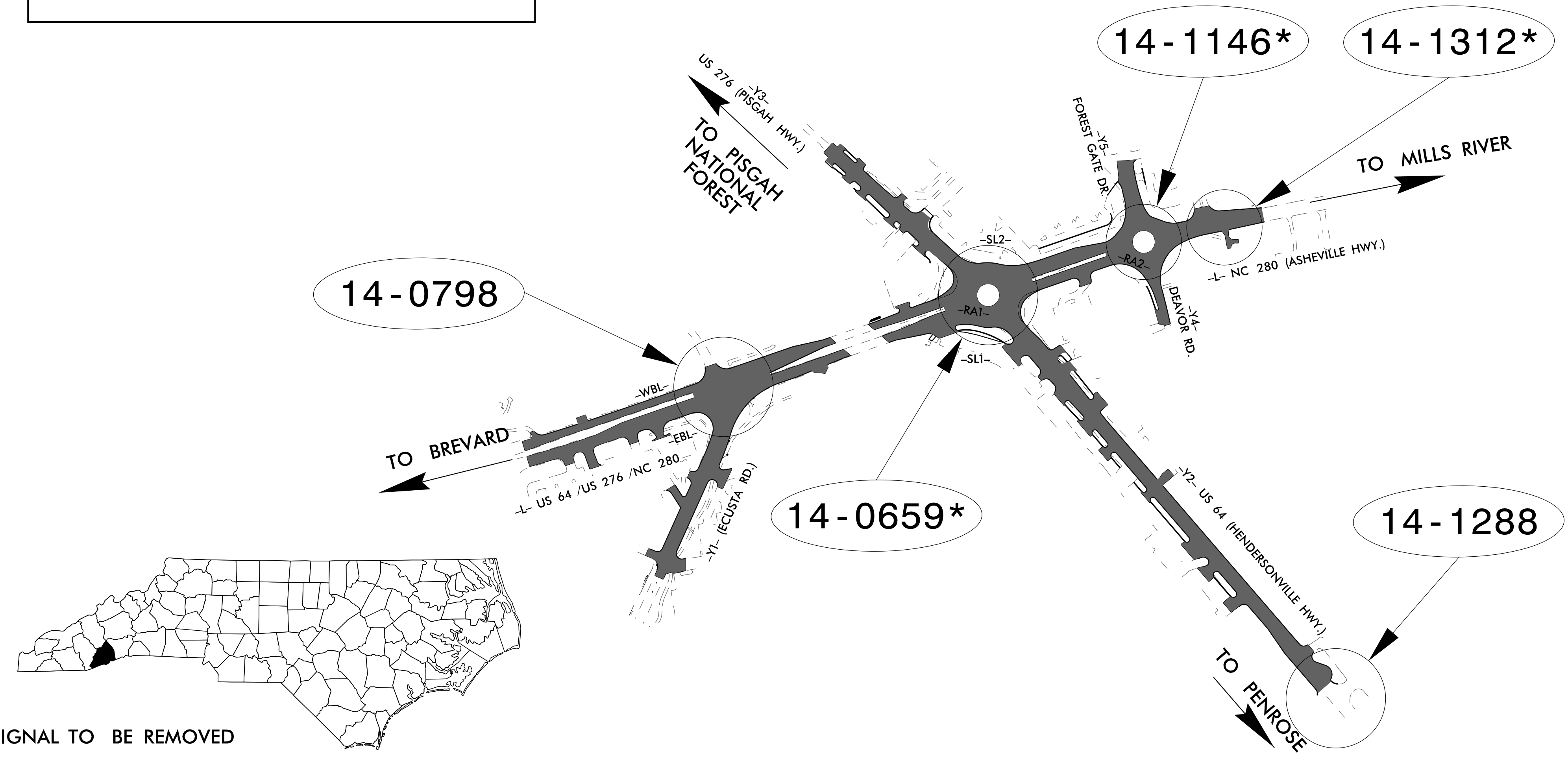
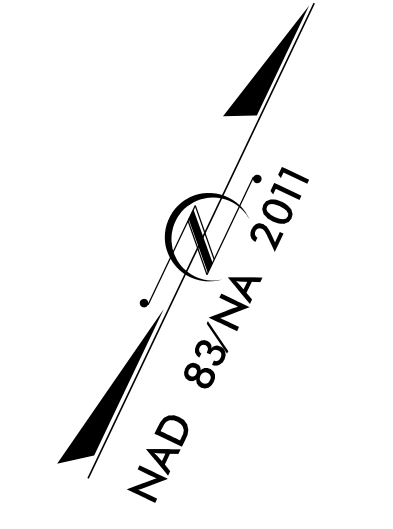
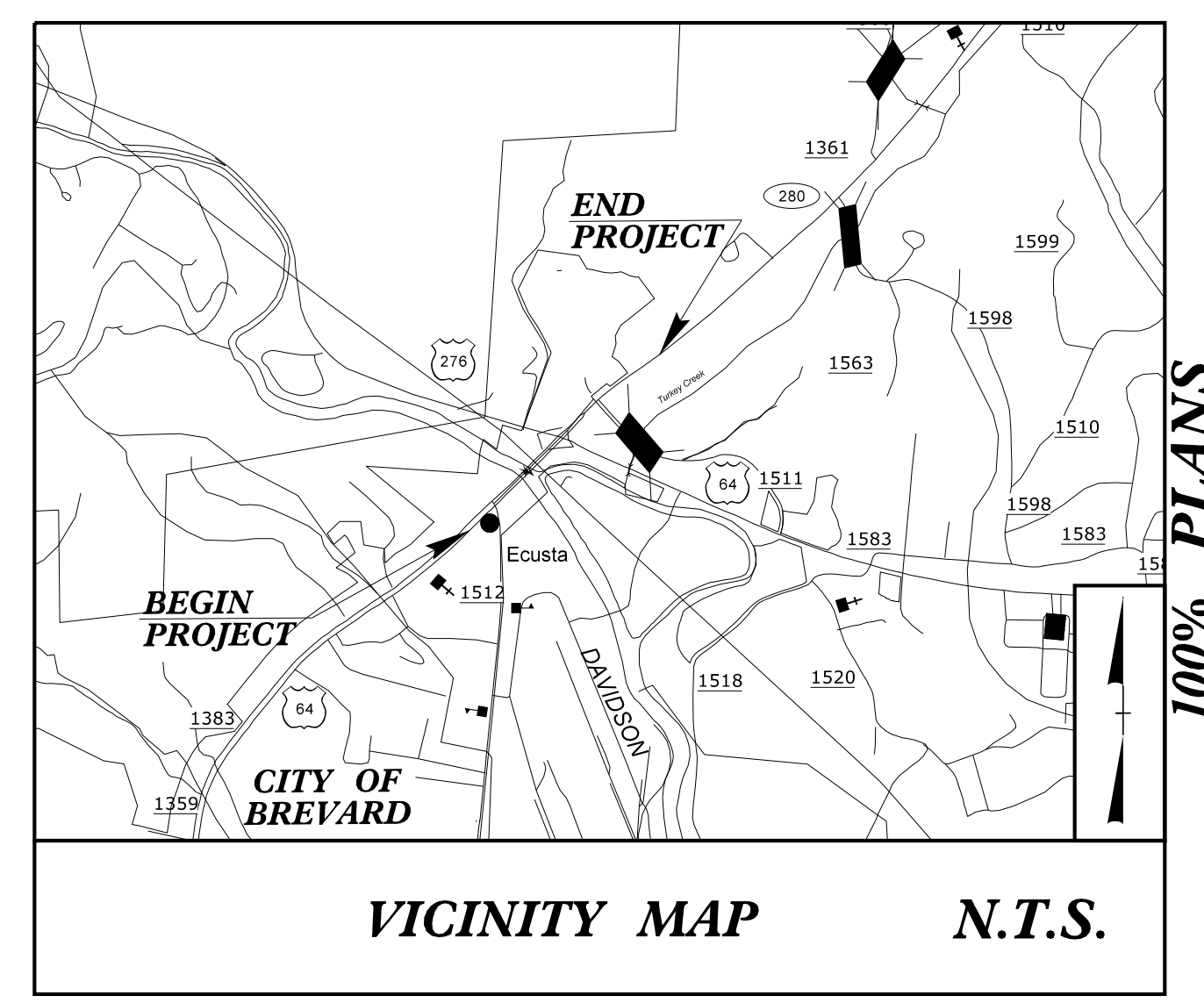
Project: R-5799

STATE OF NORTH CAROLINA
DIVISION OF HIGHWAYS

TRANSYLVANIA COUNTY

LOCATION: INTERSECTIONS OF US 64, US 276 AND NC 280
CONSTRUCT INTERSECTION IMPROVEMENTS

TYPE OF WORK: TRAFFIC SIGNALS



*SIGNAL TO BE REMOVED

Sheet #	Reference #	Index of Plans Location/Description
Sig. 1.0	N/A	Title Sheet
Sig. 1.1 - 1.2	N/A	Standard Plate Sheets
Sig. 2.0 - 2.2	14-0798 T1	US 64-276 / NC 280 (Asheville Highway) At SR 1512 (Ecusta Road)/Bank Driveway
Sig. 3.0 - 3.2	14-0798 T2	US 64-276 / NC 280 (Asheville Highway) At SR 1512 (Ecusta Road)/Bank Driveway
Sig. 4.0 - 4.2	14-0798 T3	US 64-276 / NC 280 (Asheville Highway) At SR 1512 (Ecusta Road)/Bank Driveway
Sig. 5.0 - 5.2	14-0798 T4	US 64-276 / NC 280 (Asheville Highway) At SR 1512 (Ecusta Road)/Bank Driveway
Sig. 6.0 - 6.2	14-0798 T5	US 64-276 / NC 280 (Asheville Highway) At SR 1512 (Ecusta Road)/Bank Driveway
Sig. 7.0 - 7.2	14-0798 T6	US 64-276 / NC 280 (Asheville Highway) At SR 1512 (Ecusta Road)/Bank Driveway
Sig. 8.0 - 8.2	14-0798	US 64-276 / NC 280 (Asheville Highway) At SR 1512 (Ecusta Road)/Bank Driveway
Sig. 9.0 - 9.1	14-0659 T1	US 64-276 / NC 280 (Asheville Highway) At US 64 (Hendersonville Hwy) / US 276 (Pisgah Hwy)
Sig. 10.0 - 10.1	14-0659 T2	US 64-276 / NC 280 (Asheville Highway) At US 64 (Hendersonville Hwy) / US 276 (Pisgah Hwy)
Sig. 11.0	14-5026	US 64-276 / NC 280 (Asheville Highway) At US 64 (Hendersonville Hwy) / US 276 (Pisgah Hwy)
Sig. 12.0 - 12.2	14-1146 T1	NC 280 (Asheville Highway) At SR 1511 (Deavor Road) / Forest Gate Drive
Sig. 13.0	14-5027	NC 280 (Asheville Highway) At SR 1511 (Deavor Road) / Forest Gate Drive
Sig. 14.0 - 14.2	14-1312 T1	NC 280 (Asheville Highway) At Forest Gate Circle
Sig. 15.0 - 15.2	14-1288	US 64 (Hendersonville Highway) At Ecusta Bypass / Store Entrance
Sig. 16.0	14-5028	US 276 (Pisgah Highway) At Driveways
Sig. MP1 - MP8	N/A	Standard Drawings for All Metal Poles

NC DOT
INTELLIGENT TRANSPORTATION AND SIGNALS UNIT

Contacts:

R. Nicholas Zinser, PE - Western Region Signals Engineer
D. Todd Joyce, PE - Signal Equipment Design Engineer

Refer to "Roadway Standard Drawings
NCDOT" dated January 2018 and
"Standard Specifications for Roads
and Structures" dated January 2018.

Prepared in the Office of:

RS&H
NC FIRM LICENSE NO. F-0493
1510 SOUTH WOODLEIGH, SUITE 200
CHARLOTTE, NC 28225
(704) 532-9000

Prepared for the Offices of:

Transportation Mobility and Safety Division
DEPARTMENT OF TRANSPORTATION
TSMO Unit

750 N. Greenfield Pkwy, Garner, NC 27529

4/28/2023 8:59:00 AM C:\Users\jzinserr\Documents\Transportation\1030049021\R-5799_US 64-276 Intersection Design\Design\Traffic\Signals\Design\Plan Sheets\RS5799_us_64-276_1-0_tsh.dgn