

ELECTRICAL NOTES:

- ALL ELECTRICAL WORK SHALL BE PERFORMED IN ACCORDANCE WITH NATIONAL ELECTRICAL CODE AND LOCAL CODES BY LICENSED ELECTRICAL CONTRACTOR.
- ALL MATERIALS, DEVICES, APPLIANCES AND EQUIPMENT SHALL BE NEW AND LABEL LISTED BY AN APPROVED THIRD PARTY TESTING AGENCY APPROVED BY THE STATE.
- CONTRACTOR SHALL VERIFY ALL DIMENSIONS, ELEVATIONS AND SITE CONDITIONS PRIOR TO STARTING WORK. CONTACT ENGINEER, AS APPROPRIATE, IF CONFLICTING OR PROHIBITIVE CONDITIONS ARE ENCOUNTERED. UNDERGROUND UTILITIES EXIST AND MUST BE PROPERLY MARKED BY CONTRACTOR PRIOR TO EXCAVATION.
- ELECTRICAL CONTRACTOR TO PROVIDE SEPARATE NEUTRAL CONDUCTOR FOR EACH 120V CIRCUIT, AND INSULATED GROUND CONDUCTOR IN ALL CONDUIT RUNS.
- ELECTRICAL PLANS TO LOCATE EQUIPMENT AND FIXTURES ONLY. FINAL WIRE SIZING AND OVERCURRENT PROTECTION PER NEC REQUIREMENTS.
- FINAL CIRCUITS TO BE CLEARLY LABELED ON DISTRIBUTION PANEL BY CONTRACTOR.
- ALL RECEPTACLE OUTLETS IN WET AREAS TO BE PROTECTED BY GFCI CIRCUITS.
- ALL EXTERIOR 120V WIRING SHALL BE COPPER SINGLE WIRE CONDUCTORS IN CONDUIT, MINIMUM WIRE SIZING #12AWG. CONTRACTOR TO COORDINATE CONDUIT PLACEMENT AND RUNS WITH CONTRACTOR.
- COORDINATE ELECTRICAL SERVICE AND METER PANEL LOCATIONS WITH LOCAL UTILITY.
- ALL GFCI/WP RECEPTACLES TO HAVE IN-USE COVERS.
- ALL EXTERIOR 24V SHALL BE #8-2 DBR LOW VOLTAGE CABLE RATED FOR DIRECT BURIAL.

NC ENERGY CODE: APPENDIX B ELECTRICAL SUMMARY 2018 NC ENERGY CONSERVATION CODE:

METHOD OF COMPLIANCE:
 PRESCRIPTIVE
 PERFORMANCE
 ENERGY COST BUDGET

LIGHTING SCHEDULE:

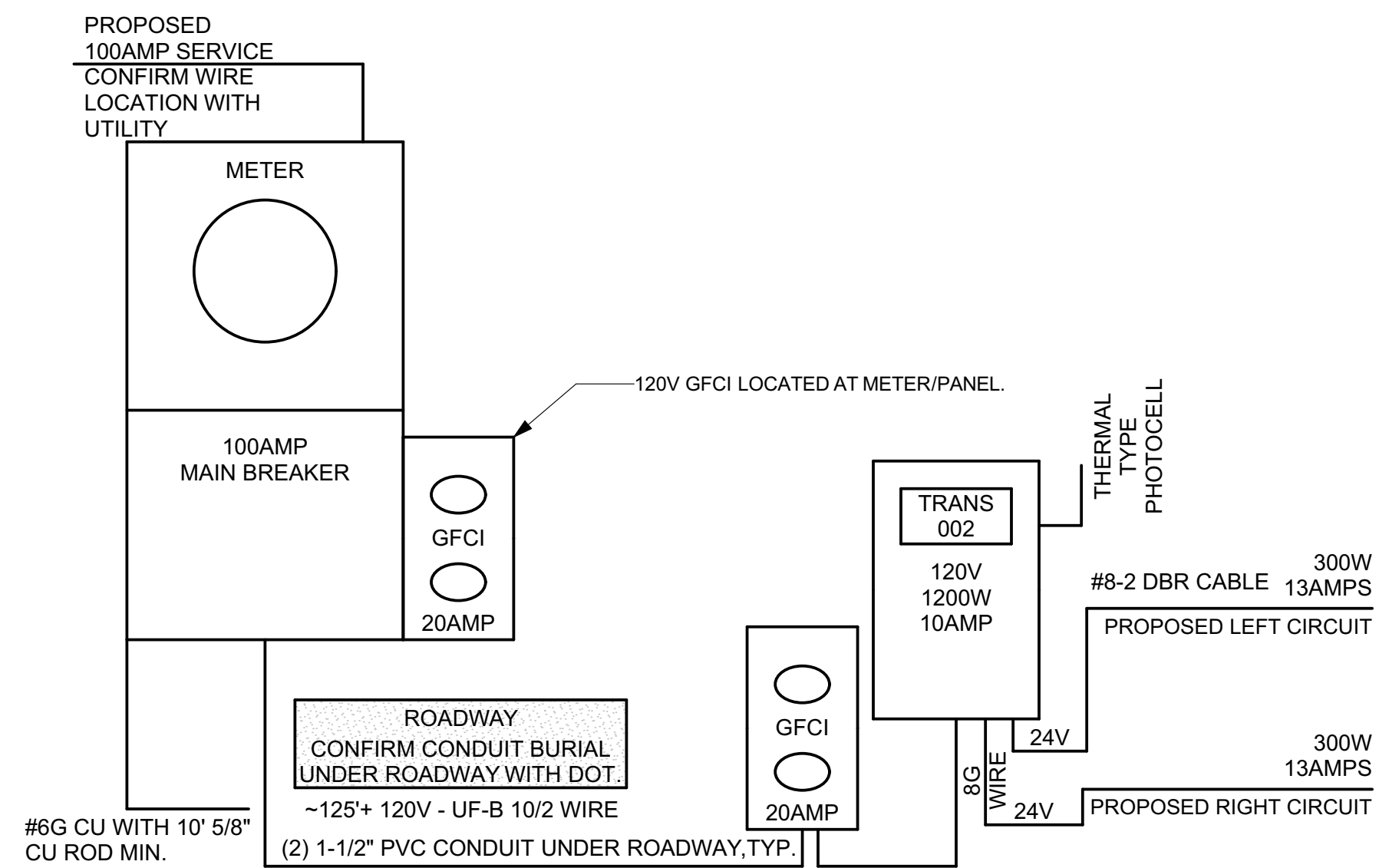
LAMP TYPE REQUIRED
 NUMBER OF LAMPS IN FIXTURE SEE ELECTRICAL SCHEDULE
 BALLAST TYPE
 NUMBER OF BALLAST
 TOTAL WATTAGE PER FIXTURE
TOTAL INTERIOR WATTAGESPECIFIED VS ALLOWED: N/A

EXTERIOR LUMENS SPECIFIED VS ALLOWED:

NOTE: LIGHTING USED FOR HIGHLIGHTING PUBLIC MONUMENTS IS EXEMPT FROM THE REQUIREMENTS BELOW

ELECTRICAL SCOPE:

- INSTALL AND CONNECT CIRCUITS FOR LOW VOLTAGE LANDSCAPE LIGHTING TO NEW METER.



NOTE:

- ELECTRICIAN AND CONTRACTOR TO CONFIRM FINAL CIRCUIT OCP AND CONNECTIONS TO MAIN PANELS WITH ENGINEER PRIOR TO BEGINNING WORK.
- FINAL WIRE AND CONDUIT SIZING DETERMINED BY SITE CONDITIONS. CONTRACTOR TO COORDINATE WIRE RUNS AND SIZING PER NC 2017 NEC WITH ENGINEER PRIOR TO INSTALLATION.
- 24V LANDSCAPE LIGHTING TO USE #8-2 DBR CABLE OR EQUAL IN 1/2" NM LIQUID TIGHT CONDUIT. MAX 50FT PER CIRCUIT FOR 100FT TOTAL. CABLE GLANDS REQUIRED WHERE WIRE LEAVES CONDUIT TO FIXTURE.
- (2) 1-1/2" PVC CONDUIT UNDER ROADWAY. CONFIRM BURIAL DEPTH WITH DOT. APPROX 125FT LENGTH. (2) 20AMP 120V CIRCUITS PULLED TO GFCI OUTLETS WITH WET-RATED IN-USE COVERS. ATTACH TO 4X4 PT 3'-0" MIN EMBED DEPTH. MAX HEIGHT 3' ABOVE GRADE. PAINT SHERWIN WILLIAMS SUPERDECK STAIN, SEMI TRANSPARENT, COLOR: SW 3 REDWOOD. LOW VOLTAGE TRANSFORMER TO ATTACH TO OPPOSITE SIDE OF 4X4.

1 UTILITY & MAIN SERVICE PANEL

PANEL SCHEDULE: M 1-PROPOSED

MAIN PANEL: EATON MODEL #MBT48B200BTS MAIN

120/240 VOLTS 1-PHASE 3-WIRE 200-AMP MAIN 10,000AIC

CKT	BRK	WIRE	DESC	BUS A		BUS B		DESC	WIRE	BRK	CKT
				LOAD 1 (VA)	LOAD 2 (VA)	LOAD 1 (VA)	LOAD 2 (VA)				
1	20	10	GFCI RECEPT	1200	180	GFCI RECEPT	12	20	2		
3			SPARE	000	000	SPARE			4		

- NOTE:
- NEW PANEL TO UTILIZE 100AMP MAIN BREAKER IN METER PANEL. MAIN OCP SIZING AND CIRCUIT WIRE SIZING TO BE AS PER NEC AND CONFIRMED WITH ENGINEER PRIOR TO INSTALLATION.
 - FINAL SIZING OF MAIN PANEL OCP TO BE CONFIRMED PER NEC ON SITE.

COMMENTS:
 -ELECTRICAL CONTRACTOR TO CONFIRM EQUIP WIRE RUNS, SIZING, AND OVERCURRENT PROTECTION PER NEC WITH ENGINEER.
 -LOADS ADJUSTED- LIGHTS 125%, PUMP MOTOR- 125%, OTHER 100%

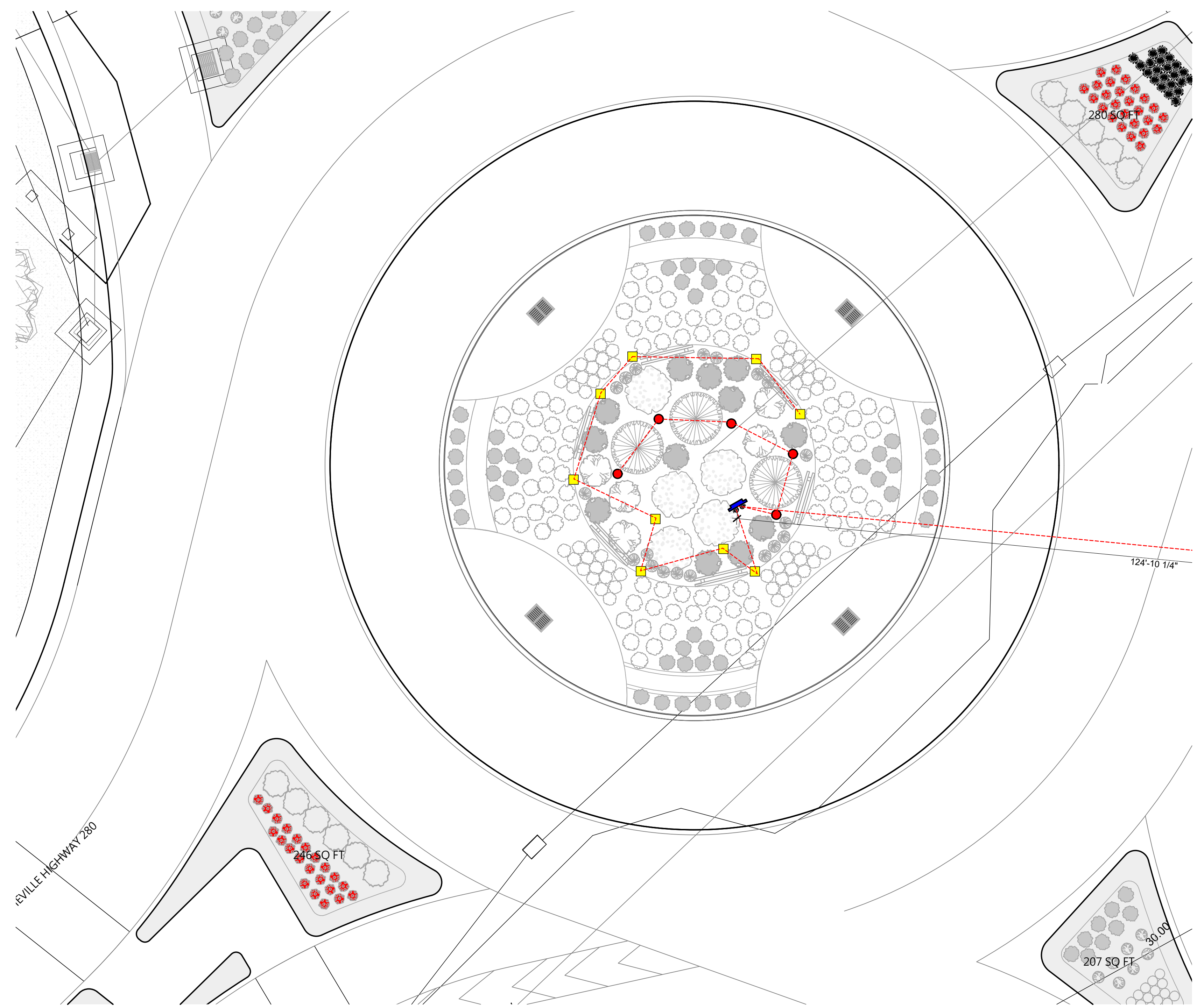
TTL CONNECTED KVA: 1.4
 TTL DEMAND KVA: 1.2
 TTL DEMAND AMPS: 5

ELECTRICAL SCHEDULE						
KEY	ITEM DESC	QUANTITY	MODEL #	SPECIFICATION	WATTAGE	VOLTAGE
[Yellow Box]	ELECTRICAL	0	CIWL6	WASH LIGHTS 20 LIGHT LEVELS W/ DIMMER	24V	
[GFCI Symbol]	GFCI	2	COOPER TRAFGF15 OR EQUAL WITH #1991 HORIZONTAL OR #4966 VERTICAL WEATHERPROOF HOUSING	20 AMP	120V	
[Red Circle]	LIGHT 01	5	CAST (CCGL25036B)	36° BEAM ANGLE	35 WATT HALOGEN EQUI.	24V
[Yellow Circle]	LIGHT 02	0	CAST (CCSL18336B)	36° BEAM ANGLE		24V
[Yellow Square]	LIGHT 03	9	CAST LED MINI WASH (CWL6LED1)	120° BEAM ANGLE		24V
[Meter Symbol]	METER	1	EATON MODEL #MBT48B400BTS MAIN	200AMP 1PH	120V/240V	
[Transformer Symbol]	TRANS	1	CAST PERIMETER 600W X 1200W DC LIGHTING TRANSFORMERS	36° BEAM ANGLE		24V
[PhotoCell Symbol]	PHOTOCELL	1	INTERMATIC ELEC-EK4236S	6IN LEAD LENGTH	UP TO 1,650W	120/208/240/277 V

2 ELECTRICAL SCHEDULE DEVOUR ROAD

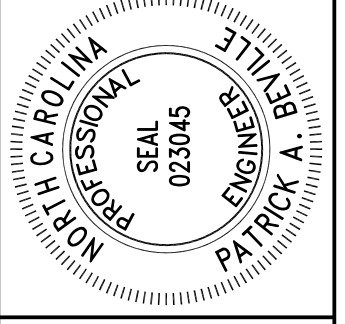
SCALE: 1:1.35

NOTE: EXACT CONDUIT LENGTHS TO BE CONFIRMED WITH DOT GRADING PLAN AND UTILITY METER LOCATION.
 1. APPROXIMATELY (2) 125' 1-1/2" PVC CONDUIT UNDER ROADWAY. ONE CONDUIT EMPTY AND CAPPED FOR REPAIR/ADDITIONAL FUTURE CIRCUITS.
 2. APPROXIMATELY 100' 1" PVC CONDUIT FOR LOW VOLTAGE LIGHTING WIRE PROTECTION WITHIN LANDSCAPING AREA.

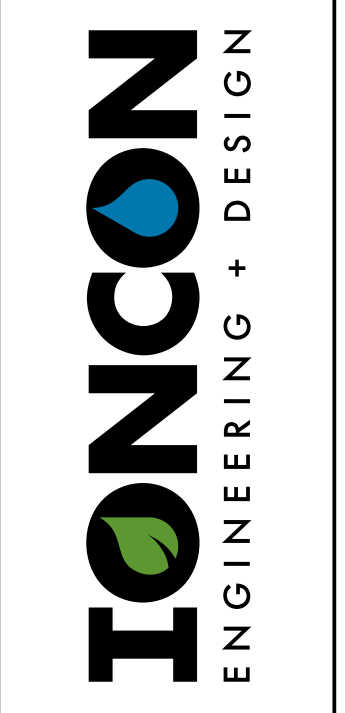


3 DEAVOR RD ROUNDABOUT ELECTRICAL PLAN

1" = 10'



PATRICK A. BEVILLE PE, LEED AP
 IONCON, PLLC P-0820
 2654 HWY 105
 BOONE, NC 28607
 INFO@IONCON.COM



BREVARD ROUNDABOUTS - ELECTRICAL
 SITE ADDRESS: CITY OF BREVARD
 OWNER: TERESA BUCKWALTER
 PROJECT: ROUNDABOUTS AT
 (828) 719-9177 | TERESA@IONCON.COM

DEAVOR RD ELECTRICAL PLAN

QC	BY	DATE
BOD	-	###/###/###
DST	-	###/###/###
CNS	-	###/###/###
CDE	-	###/###/###
COM	-	###/###/###

DATE	5/9/2023
SCHEDULE	AS NOTED
DRW	MEB
EIT	QD
JOB #	215003

E01

PLOTTED ON: 5/9/2023