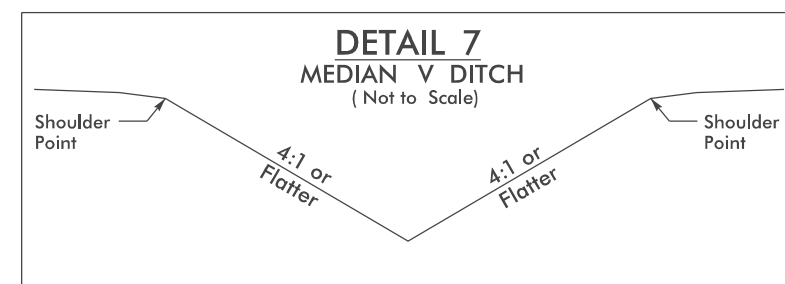


SEE SHEETS 7 AND 8 FOR -NBL- AND -SBL- PROFILES.

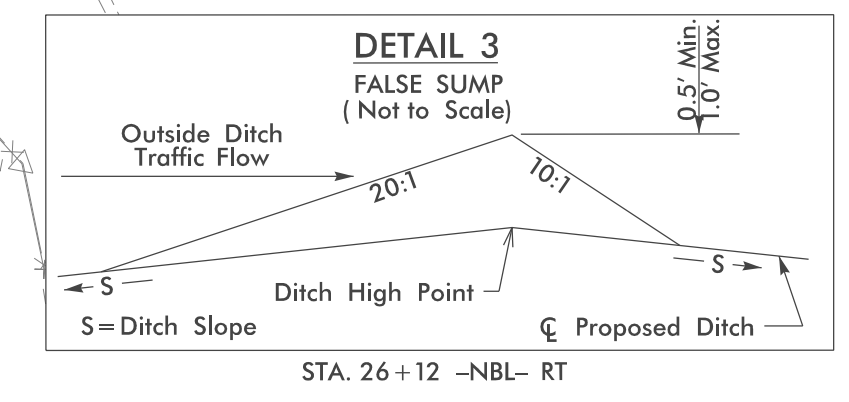
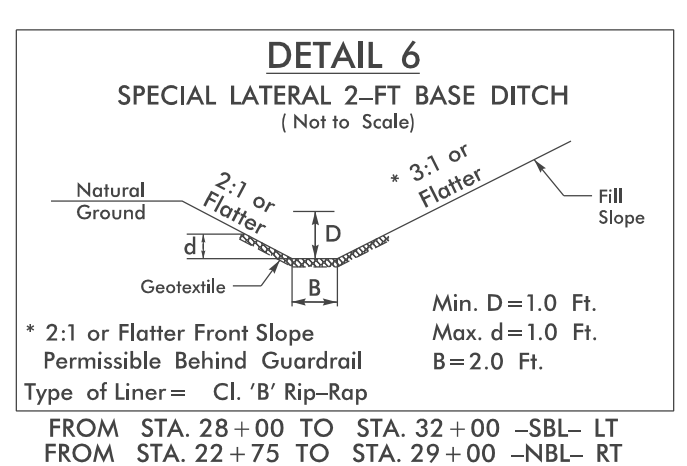
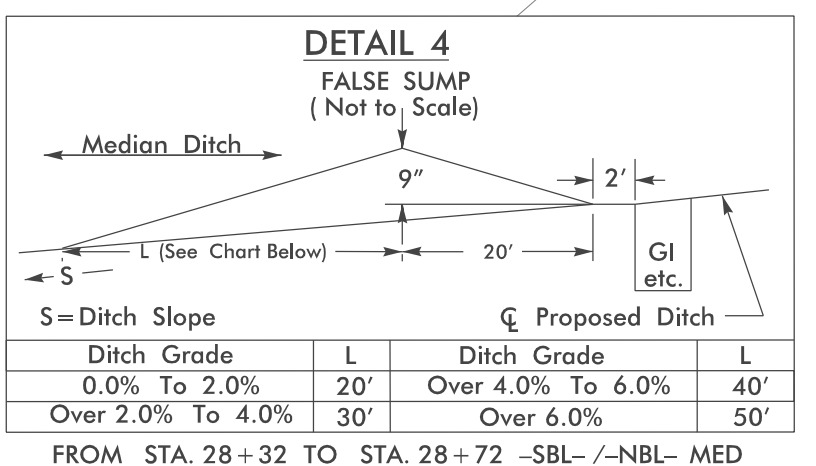
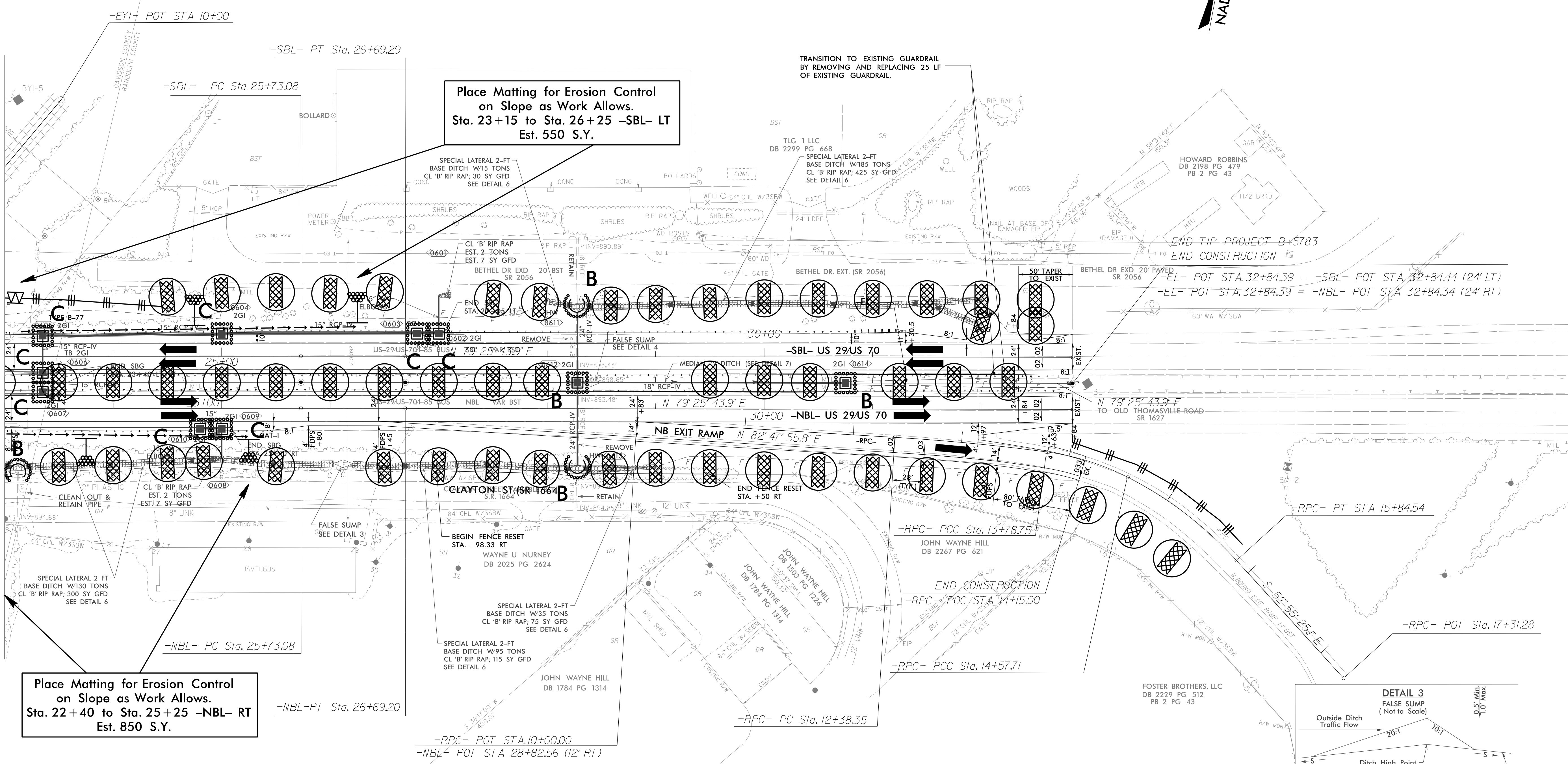
SEE SHEET 9 FOR -RPC- PROFILE



FROM STA. 29+00 -SBL- RT TO STA. 30+75 -SBL- RT



MATCHLINE STA. 23+00 SHEET 5



FINAL GRADE EROSION CONTROL FOR CONSTRUCTION SHEET 6

UTILIZE FABRIC INSERT INLET PROTECTION DEVICE IN LIEU OF ROCK INLET SEDIMENT TRAP TYPE C AS DIRECTED BY THE ENGINEER